

N:\Projects\01315\dwg\01315save5.dwg 11/21/2002 10:39:30 AM EST
 THIS DRAWING IS THE PROPERTY OF B.P. BARBER & ASSOCIATES, INC. AND IS NOT TO BE REPRODUCED OR TRANSMITTED IN ANY FORM OR BY ANY MEANS, ELECTRONIC OR MECHANICAL, INCLUDING PHOTOCOPYING, RECORDING, OR BY ANY INFORMATION STORAGE AND RETRIEVAL SYSTEM, WITHOUT THE WRITTEN PERMISSION OF B.P. BARBER & ASSOCIATES, INC.

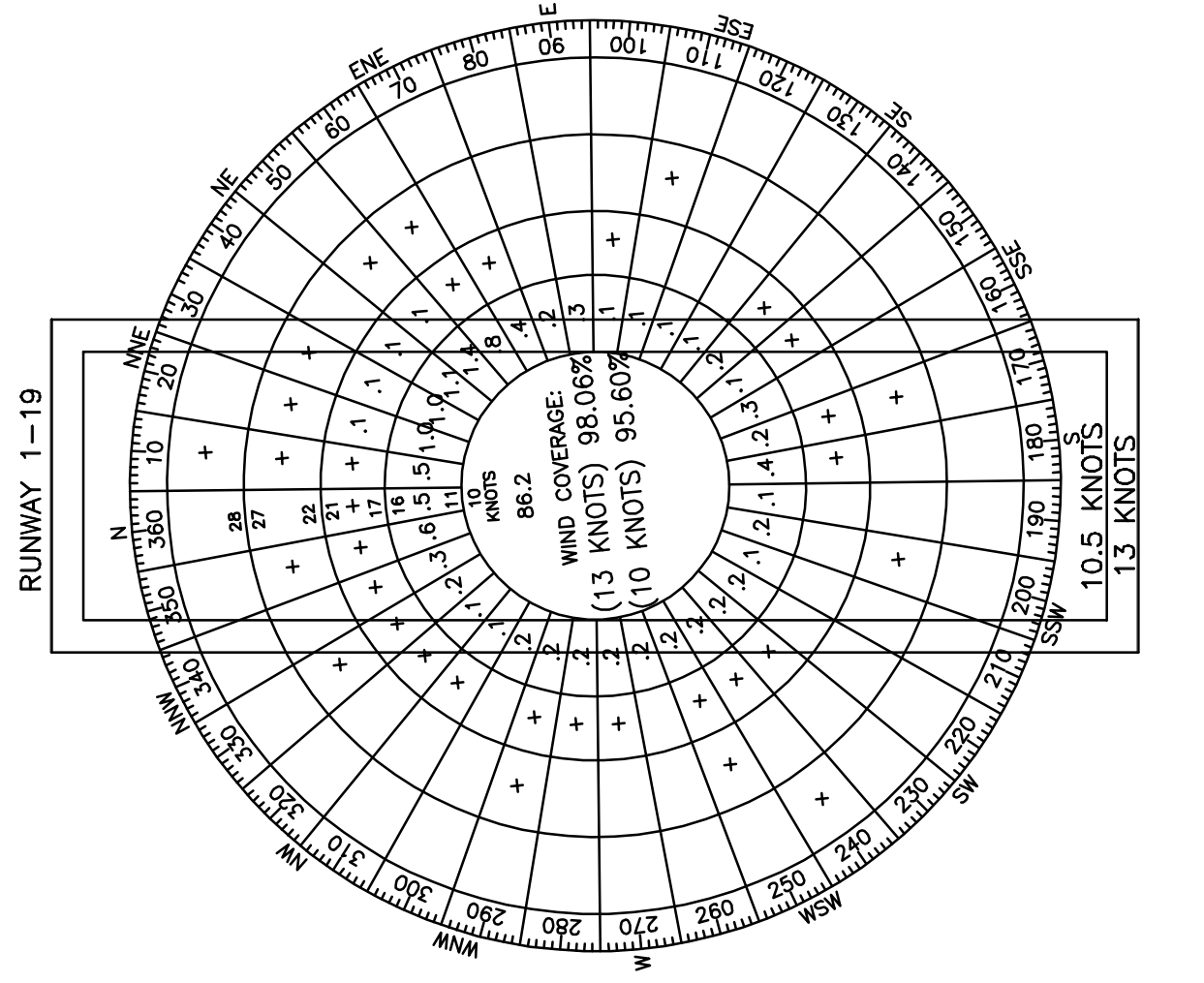
LEGEND	
EXISTING	ULTIMATE

AIRPORT DATA TABLE			
	EXISTING	ULTIMATE	
FAA SITE NUMBER	22362.A	SAME	
LOCATION IDENTIFIER	51J	SAME	
AIRPORT ELEVATION (ft, AMSL)	80.0	SAME	
AIRPORT REFERENCE POINT (ARP)	LAT. N33°-51'-13"	SAME	
	LONG. W79°-46'-05"	SAME	
NAVIGATIONAL AIDS	NDB	SAME	
NORMAL MAX. TEMP. HOTTEST MONTH (°F)	95'	SAME	
AIRPORT REFERENCE CODE (ARC)	A-1s	SAME	

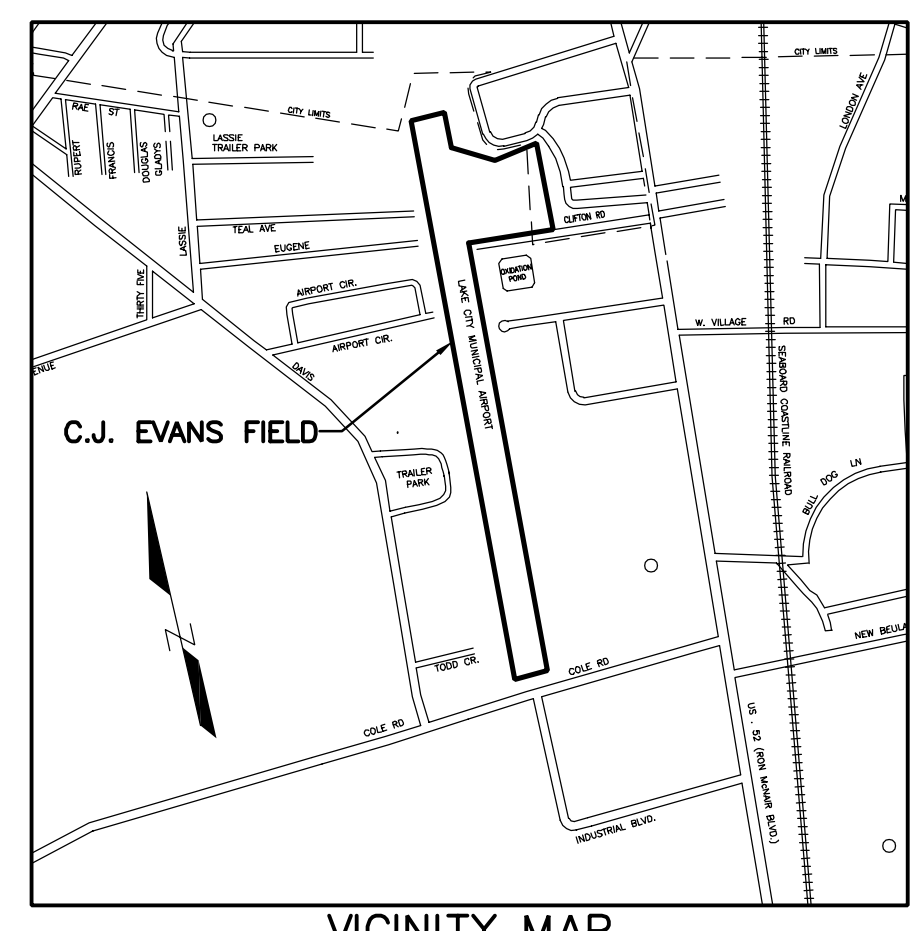
RUNWAY DATA TABLE			
	EXISTING	ULTIMATE	
AVERAGE RUNWAY GRADIENT (%)	0.27	SAME	
RUNWAY LENGTH	3700'	SAME	
RUNWAY WIDTH	75'	SAME	
WIND COVERAGE (%)	13.0 KNOTS 10.5 KNOTS	98.06 95.60 SAME	
PAVEMENT TYPE	ASPHALT	SAME	
PAVEMENT DESIGN LOAD (lb), GROSS	20,000	SAME	
SUBGRADE CLASS	E-6	SAME	
APPROACH SLOPES	20:1	SAME	
LIGHTING	MIRL	SAME	
RUNWAY MARKING	BASIC	SAME	
VISUAL APPROACH AIDS	R/W 1 VASI	SAME	
	R/W 19 VASI	SAME	
RUNWAY SAFETY AREA LENGTH	4180'	SAME	
RUNWAY SAFETY AREA WIDTH	120'	SAME	
ELECTRONICS AIDS	NONE	SAME	
TOUCHDOWN ZONE	R/W 1 80'	SAME	
ELEVATIONS	R/W 19 80'	SAME	

- PROPOSED IMPROVEMENTS:**
- ENTIRE RUNWAY TO BE RESURFACED.
 - NEW 80'x30'x12'H HANGER AND APRON EXTENSION.
 - FUTURE 80'x30'x12'H HANGER AND APRON EXTENSION.
 - APPROXIMATELY ±2000 LF OF NEW FENCING TO BE INSTALLED.

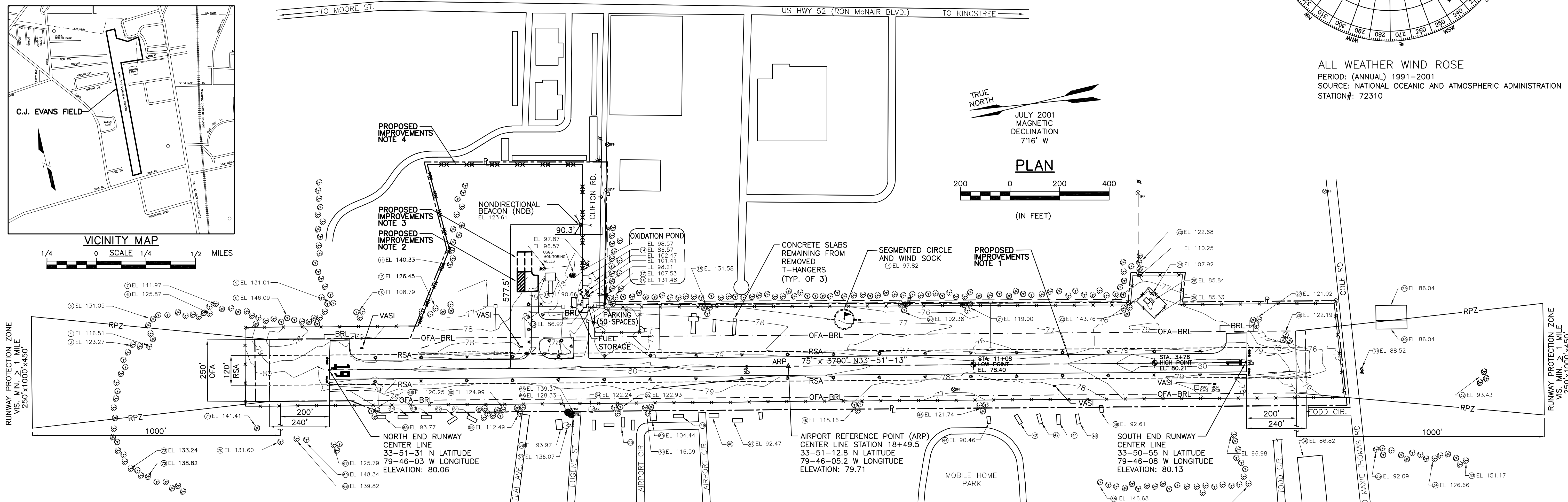
- NOTES:**
- THE RUNWAY 1-19 PAVEMENT WIDTH OF 75 FEET EXCEEDS CATEGORY ADG-I STANDARDS, MEETING CRITERIA ESTABLISHED FOR CATEGORY ADG-II.
 - THE RUNWAY 1-19 WIND COVERAGE OF 98.06% AT 13.0 KNOTS MEETS CRITERIA ESTABLISHED FOR CATEGORY ADG-II.
 - OBJECT FREE ZONE AND THRESHOLD PENETRATIONS DETERMINED FROM SURVEY CONDUCTED BY B.P. BARBER & ASSOCIATES, INC. ON 11 JUNE 2001 TO 19 JUNE 2001 AND CURRENT FAA 5010 SKETCH LAST REVISED 25 AUGUST 2000.
 - OBJECT FREE ZONE AND THRESHOLD PENETRATIONS ARE IDENTIFIED IN THE OBSTRUCTION DATA TABLE.
 - THE AIRPORT REFERENCE POINT HAS BEEN UPDATED TO COINCIDE WITH THE CURRENT RUNWAY LENGTH.
 - THE MAGNETIC DECLINATION WAS CALCULATED USING NOAA SYNTHESIS SOFTWARE.
 - RUNWAY PAVEMENT TYPE, DESIGN STRENGTH AND SUBGRADE CLASS TAKEN FROM FLOYD, COLEMAN, ASKINS & KELLAHAN RECORD DRAWINGS DATED MAY, 1984.
 - HEIGHTS IN OBSTRUCTION DATA TABLE ARE REPORTED AS FEET ABOVE GROUND LEVEL (AGL).
 - ELEVATIONS IN OBSTRUCTION DATA TABLE ARE REPORTED AS FEET ABOVE MEAN SEA LEVEL (AMSL).
 - PERIMETER FENCING IS 6' HIGH ABOVE GROUND LEVEL.



ALL WEATHER WIND ROSE
 PERIOD: (ANNUAL) 1991-2001
 SOURCE: NATIONAL OCEANIC AND ATMOSPHERIC ADMINISTRATION
 STATION#: 72310



VICINITY MAP
 SCALE 1/4 0 1/4 1/2 MILES



OBSTRUCTION DATA TABLE			
ITEM	HEIGHT (AGL, ft)	ELEVATION (AMSL, ft)	SURFACE PENETRATION
1	ELEVATED TANK NOT SHOWN	33-51-28.8 N LATITUDE 79-45-42 W LONGITUDE	NONE
2	ELEVATED TANK NOT SHOWN	33-52-20.7 N LATITUDE 79-45-55.7 N LONGITUDE	NONE
3	TREES	45	123.27
4	TREES	38	116.51
5	TREES	55	133.05
6	TREES	45	125.87
7	TREES	32	111.97
8	TREES	67	146.09
9	TREES	52	131.01
10	TREES	30	108.79
11	TREES	63	140.33
12	TREES	50	126.45
13	F.O.B.	9	86.92
14	CAP BLDG.	9	86.57
15	PRIVATE HANGER	12	90.66
16	TREES	53	131.48
17	POWER POLE	30	107.53
18	TREES	54	131.58
19	WIND SOCK	20	97.82

OBSTRUCTION DATA TABLE			
ITEM	HEIGHT (AGL, ft)	ELEVATION (AMSL, ft)	SURFACE PENETRATION
20	TREES	27	102.38
21	TREES	44	119.00
22	TREES	47	122.68
23	TREES	65	143.76
24	POWER POLE	30	107.92
25	WELL/PUMP STATION	8	85.84
26	FENCE	7	85.33
27	TREES	44	121.02
28	TREES	46	122.19
29	BUILDING	17.5	92.97
30	BUILDING	10.25	86.04
31	LAMP POLE	13	88.52
32	TREES	17	92.43
33	TREES	78	151.17
34	TREES	50	126.66
35	TREES	17	92.09
36	BUILDING	9	86.82
37	TREES	56	132.48
38	TREES	67	146.68

OBSTRUCTION DATA TABLE			
ITEM	HEIGHT (AGL, ft)	ELEVATION (AMSL, ft)	SURFACE PENETRATION
39	MOBILE HOME	13.5	92.61
40	MOBILE HOME	13.5(EAST)	N/A
41	MOBILE HOME	13.5(EAST)	N/A
42	MOBILE HOME	13.5(EAST)	N/A
43	MOBILE HOME	13.5(EAST)	N/A
44	MOBILE HOME	12.25	90.46
45	TREES	43	121.74
46	TREES	41	118.16
47	MOBILE HOME	13	92.47
48	MOBILE HOME	13(EAST)	N/A
49	MOBILE HOME	13(EAST)	N/A
50	HOUSE	25	104.44
51	TREES	37	116.59
52	TREES	44	122.93
53	MOBILE HOME	13.5(EAST)	N/A
54	TREE (OAK)	44	122.24
55	TREE (PINE)	60	139.37
56	TREE (PINE)	50	128.33
57	TREE (OAK)	44	122.24

OBSTRUCTION DATA TABLE			
ITEM	HEIGHT (AGL, ft)	ELEVATION (AMSL, ft)	SURFACE PENETRATION
58	HOUSE	15.5	93.97
59	TREES	35	112.49
60	TREES	47	124.99
61	MOBILE HOME	13.5(EAST)	N/A
62	MOBILE HOME	13.5(EAST)	N/A
63	MOBILE HOME	13.5	N/A
64	MOBILE HOME	13.5(EAST)	N/A
65	MOBILE HOME	13.5(EAST)	N/A
66	TREES	39	120.25
67	TREES	45	125.79
68	TREES	59	139.82
69	TREES	65	148.34
70	TREES	51	131.60
71	TREE	60	141.40
72	TREES	60	138.82
73	TREES	55	133.24

bpb
 B. P. BARBER & ASSOCIATES, INC.
 ENGINEERS - PLANNERS - SURVEYORS
 COLUMBIA - SPARTANBURG - CHARLESTON - FLORENCE

NO.	1	ADDED SHEETS 3 & 4 OF 4	MJF	MAB	11/02
		REVISIONS	BY	APP.	DATE

LAKE CITY MUNICIPAL AIRPORT
 C.J. EVANS FIELD
 LAKE CITY, SOUTH CAROLINA
 FAA SITE#: 22362.A

DATE: AUGUST, 2001 COUNTY: FLORENCE

DRAWING TITLE:
**AIRPORT LAYOUT PLAN/TERMINAL AREA PLAN/
 RUNWAY PROTECTION ZONE DRAWING**

DESIGNED BY: FJ/MJF
 DRAWN BY: MJF
 PROJECT: 01315
 FILE NO.: C1-13-26

CHECKED BY: MAB
 APPROVED BY: DJH
 SCALE: AS SHOWN
 SHEET 1 OF 4

2003