

ALL WEATHER WIND ROSE

SOURCE:
NATIONAL WEATHER RECORDS CENTER
ASHEVILLE, NORTH CAROLINA
FOR FLORENCE MUNICIPAL AIRPORT
REPORTING PERIOD FROM JAN.1960 THRU DEC.1964

WIND COVERAGE:
12 MPH / 10.5 KNT = 94.7%
15 MPH / 13 KNT = 97.2%

BUILDINGS

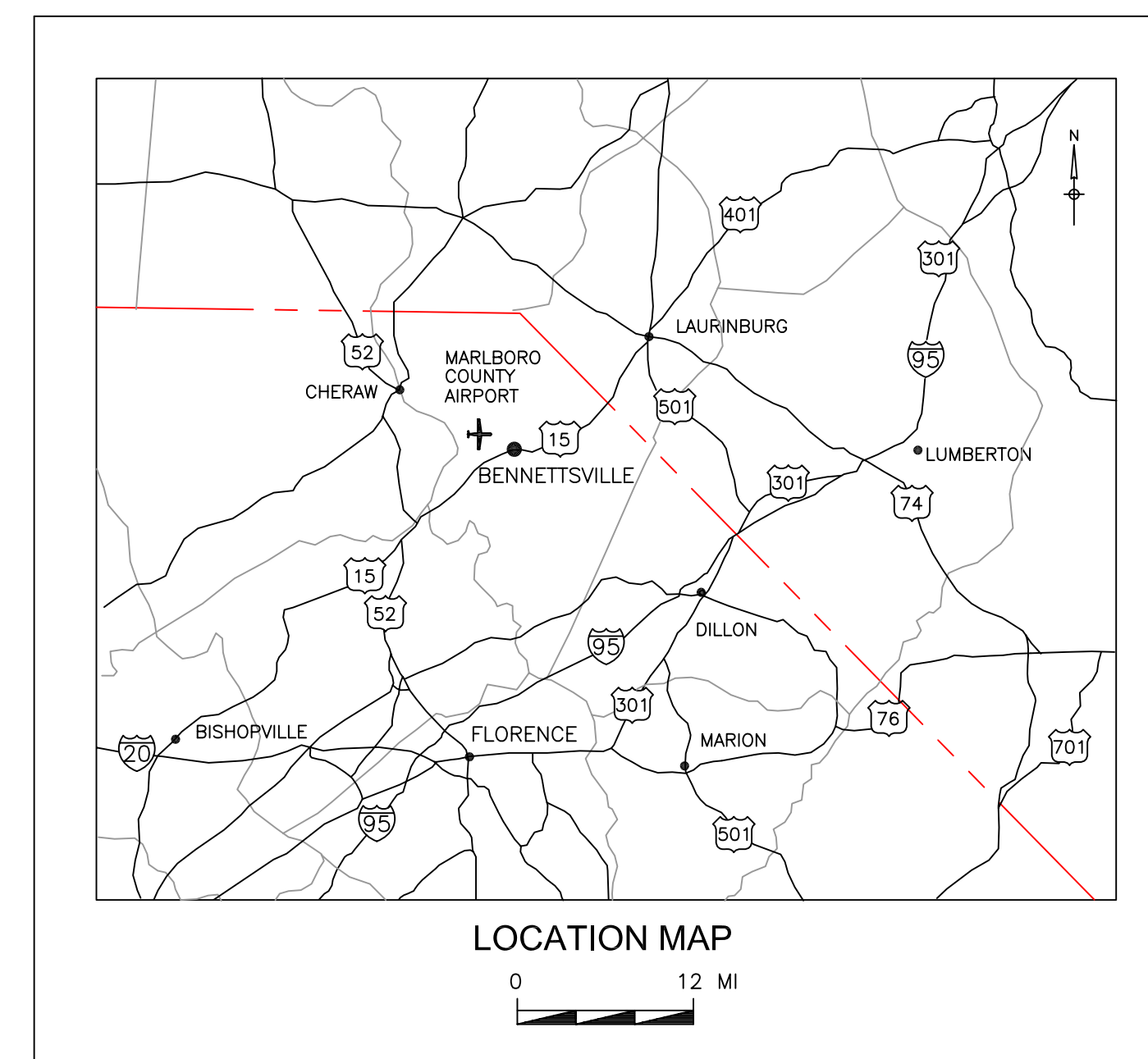
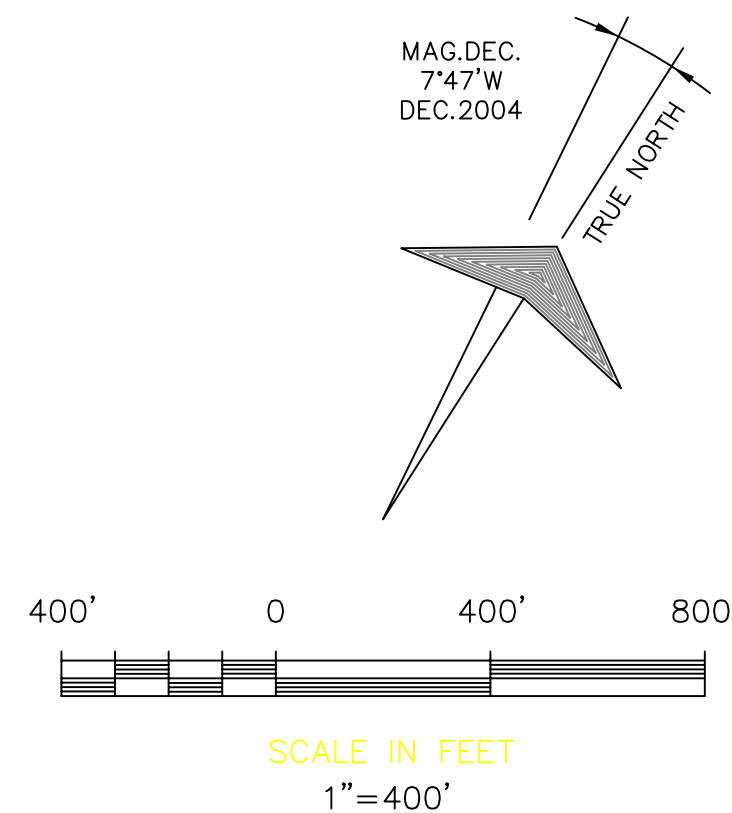
- ① TERMINAL
- ② T-HANGAR
- ③ MAINTENANCE HANGAR

FACILITIES

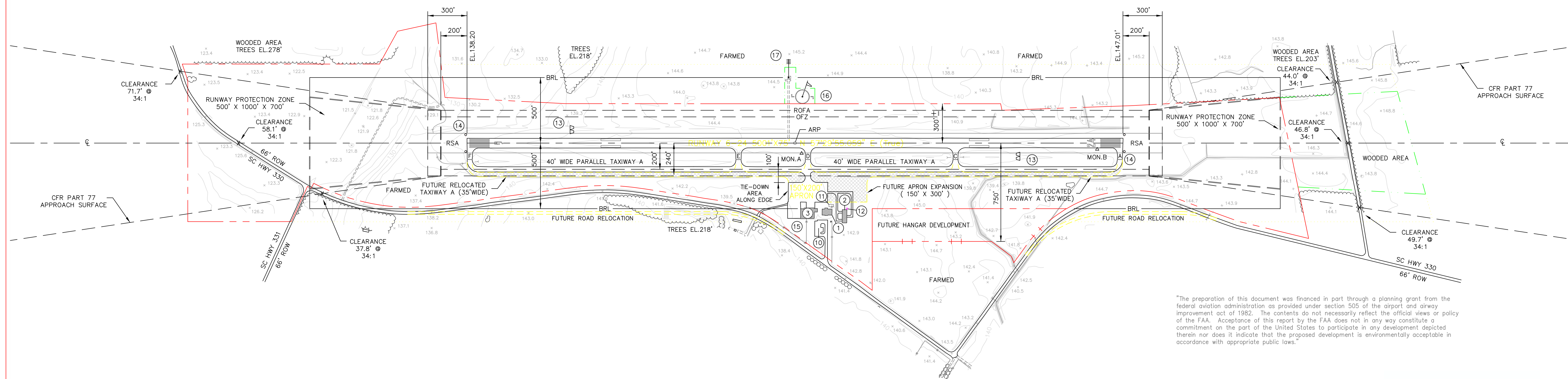
- ⑩ AUTO PARKING
- ⑪ FUEL FARM
- ⑫ AIRPORT BEACON
- ⑬ PRECISION APPROACH PATH INDICATOR (PAPI)
- ⑭ RUNWAY END IDENTIFIER LIGHTS (REIL)
- ⑮ NON-DIRECTIONAL BEACON (NDB)
- ⑯ SEGMENTED CIRCLE / LIGHTED WIND CONE
- ⑰ AUTOMATED WEATHER OBSERVING SYSTEM (AWOS III PT)

NOTES

1. BASE MAP PROVIDED BY SOUTH CAROLINA DEPARTMENT OF COMMERCE DIVISION OF AERONAUTICS. UPDATED BY TALBERT AND BRIGH PER SUBSEQUENT DEVELOPMENT.
2. FUTURE DEVELOPMENT SHOWN WAS TAKEN FROM THE MARLBORO COUNTY AIRPORT, BENNETTSVILLE, SOUTH CAROLINA, AIRPORT LAYOUT PLAN AS PREPARED BY D.C. BARBOT AND ASSOCIATES, APRIL 1978.
3. GEODETIC DATA FOR RUNWAY PER CERTIFIED SURVEY BY HANOVER DESIGN SERVICES 7/11/02. ELEVATIONS ARE IN FEET BASED ON MEAN SEA LEVEL (MSL). HORIZONTAL DATUM: NAD83. VERTICAL DATUM: NAVD88 (MSL)



LOCATION MAP



"The preparation of this document was financed in part through a planning grant from the federal aviation administration as provided under section 505 of the airport and airway improvement act of 1982. The contents do not necessarily reflect the official views or policy of the FAA. Acceptance of this report by the FAA does not in any way constitute a commitment on the part of the United States to participate in any development depicted, therein nor does it indicate that the proposed development is environmentally acceptable in accordance with appropriate public laws."

2004

AIRPORT DESIGN STANDARDS DIMENSIONAL DATA				
AIRPORT REFERENCE CODE (ARC) ITEM	EXIST. REQ.	ULT. REQ.	MEETS REQ.	
RUNWAY SAFETY AREA (RSA) WIDTH	150'	SAME	YES	
RSA BEYOND R/W 6 END	300'	SAME	YES	
RSA BEYOND R/W 24 END	300'	SAME	YES	
RUNWAY OBSTACLE FREE ZONE (OFZ) WIDTH	400'	SAME	YES	
OFZ BEYOND R/W END	200'	SAME	YES	
RUNWAY OBJECT FREE AREA (ROFA) WIDTH	500'	SAME	YES	
ROFA BEYOND R/W END	300'	SAME	YES	
RUNWAY PARALLEL TAXIWAY SEPARATION	240'	SAME	NO	
TAXIWAY OBJECT FREE AREA (TOFA) WIDTH	131'	SAME	YES	
TAXILANE OBJECT FREE AREA	115'	SAME	YES	
MINIMUM AIRCRAFT PARKING DIST FROM R/W	250'	SAME	YES	

DEVIATION OF AIRPORT DESIGN STANDARDS
THE EXISTING 200' RUNWAY TO PARALLEL TAXIWAY CENTERLINE SEPARATION IS LESS THAN THE STANDARD 240'. THE EXISTING PARALLEL TAXIWAY IS WITHIN THE OBSTACLE FREE ZONE. THE PARALLEL TAXIWAY IS SHOWN TO BE RELOCATED TO MEET THE AIRPORT DESIGN STANDARDS-AS PROJECT FUNDING PERMITS.

RUNWAY DATA				
ITEM	EXISTING	ULTIMATE		
RUNWAY 6 END	LATITUDE NORTH 34°37'04.853"	SAME		
COORDINATES (NAD83)	LONGITUDE WEST 79°44'28.932"	SAME		
RUNWAY 6 END ELEVATION / TOUCH DOWN ZONE ELEVATION	138.20/146.79'	SAME		
RUNWAY 24 END	LATITUDE NORTH 34°37'31.432"	SAME		
COORDINATES (NAD83)	LONGITUDE WEST 79°43'38.459"	SAME		
RUNWAY 24 END ELEVATION / TOUCHDOWN ZONE ELEVATION	147.01/147.01'	SAME		
LENGTH X WIDTH	5000'x75'	SAME		
EFFECTIVE GRADIENT	0.18%	SAME		
PAVEMENT SURFACE	ASPHALT	SAME		
PAVEMENT STRENGTH (THOUSANDS OF POUNDS)	28S/43 DW	60 DW		
MARKING	NPI	SAME		
NAVAIDS	VOR	SAME		
	DME	SAME		
	NDB	SAME		
LIGHTING / APPROACH AIDS	MIRL	SAME		
	PAPI 6/24	SAME		
	REIL 6/24	SAME		

AIRPORT DATA				
ITEM	EXISTING	ULTIMATE		
AIRPORT REFERENCE POINT	LATITUDE NORTH 34°37'18.151"	SAME		
ARP COORDINATES (NAD83)	LONGITUDE WEST 79°44'03.694"	SAME		
ESTABLISHED AIRPORT ELEVATION (MEAN SEA LEVEL)	147' MSL	SAME		
NORMAL MAXIMUM TEMPERATURE - HOTTEST MONTH	87.0°	SAME		
AIRPORT REFERENCE CODE (ARC)	B II	SAME		
CRITICAL AIRCRAFT	FAMILY B II	SAME		
AIRPORT AND TERMINAL NAVAIDS	ROT BEACON	SAME		
	NDB	SAME		
(1) SEGMENTED CIRCLE & LIGHTED WIND CONE	(1) SC/LWC	SAME		
TAXIWAY LIGHTING / SIGNAGE	MITL	SAME		

CFR PART 77 RUNWAY APPROACH AND RPZ DATA			
RUNWAY	EXISTING	ULTIMATE	
6	VOR DME OR GPS-A NONPRECISION STRAIGHT-IN NDB GPS SURFACE VISIBILITY MINIMUMS NOT LESS THAN 1 MILE 500' X 10000' X 3500' 10000' @ 34:1 REQUIRED RUNWAY PROTECTION ZONE 500' X 1000' X 700'	VOR DME OR GPS-A NONPRECISION STRAIGHT-IN NDB GPS SURFACE VISIBILITY MINIMUMS NOT LESS THAN 1 MILE 500' X 10000' X 3500' 10000' @ 34:1 REQUIRED RUNWAY PROTECTION ZONE 500' X 1000' X 700'	
24	VOR DME OR GPS-A NONPRECISION STRAIGHT-IN GPS SURFACE VISIBILITY MINIMUMS NOT LESS THAN 1 MILE 500' X 10000' X 3500' 10000' @ 34:1 REQUIRED RUNWAY PROTECTION ZONE 500' X 1000' X 700'	VOR DME OR GPS-A NONPRECISION STRAIGHT-IN GPS SURFACE VISIBILITY MINIMUMS NOT LESS THAN 1 MILE 500' X 10000' X 3500' 10000' @ 34:1 REQUIRED RUNWAY PROTECTION ZONE 500' X 1000' X 700'	

LEGEND			
ITEM	EXISTING	ULTIMATE	
WOODED AREAS			
GROUND SPOT ELEVATION			
GROUND CONTOURS			
ROADS (UNPAVED)			
BUILDINGS / STRUCTURES			
ROADS (PAVED)			
AIRPORT BUILDINGS / STRUCTURES			
AIRPORT PAVED AREAS			
AIRPORT PROPERTY LINE			
AVIGATION EASEMENT			

NOAA MONUMENT DATA			
MONUMENT (A) BENPORT	N=1016828.91	ELEV.144.88	
SC STATE NAD83 COORDINATES	E=2380848.70		
MONUMENT (B) BENPORT AZ MK	N=1018069.45	ELEV.144.68	
SC STATE NAD83 COORDINATES	E=2382718.38		

TALBERT & BRIGH
ENGINEERING & PLANNING CONSULTANTS
THE COTTON EXCHANGE 321 N. FRONT ST. WILMINGTON, NC 28401
PHONE: 910-762-6228 FAX: 910-763-5550
EMAIL: tbr1@wilmington.net

REVNO	DESCRIPTION	DATE	REVISIONS
1	PER AIP NO.3-45-009-02, 03, AND 04 PROJECTS	07/23/04	
2	PER FAA LETTER OF COMMENTS, 11/24/03	01/23/04	

MARLBORO COUNTY JETPORT (BBP)
H.E. AVENT FIELD
BENNETTSVILLE, SOUTH CAROLINA
AIRPORT LAYOUT DRAWING

Approved By
Title
Date
MARLBORO COUNTY SOUTH CAROLINA
Date AUG. 1999
Scale 1"=400'
Drawn LSM
Checked JIT
Project No. 3214-9801
Sheet No. 1
Of ONE