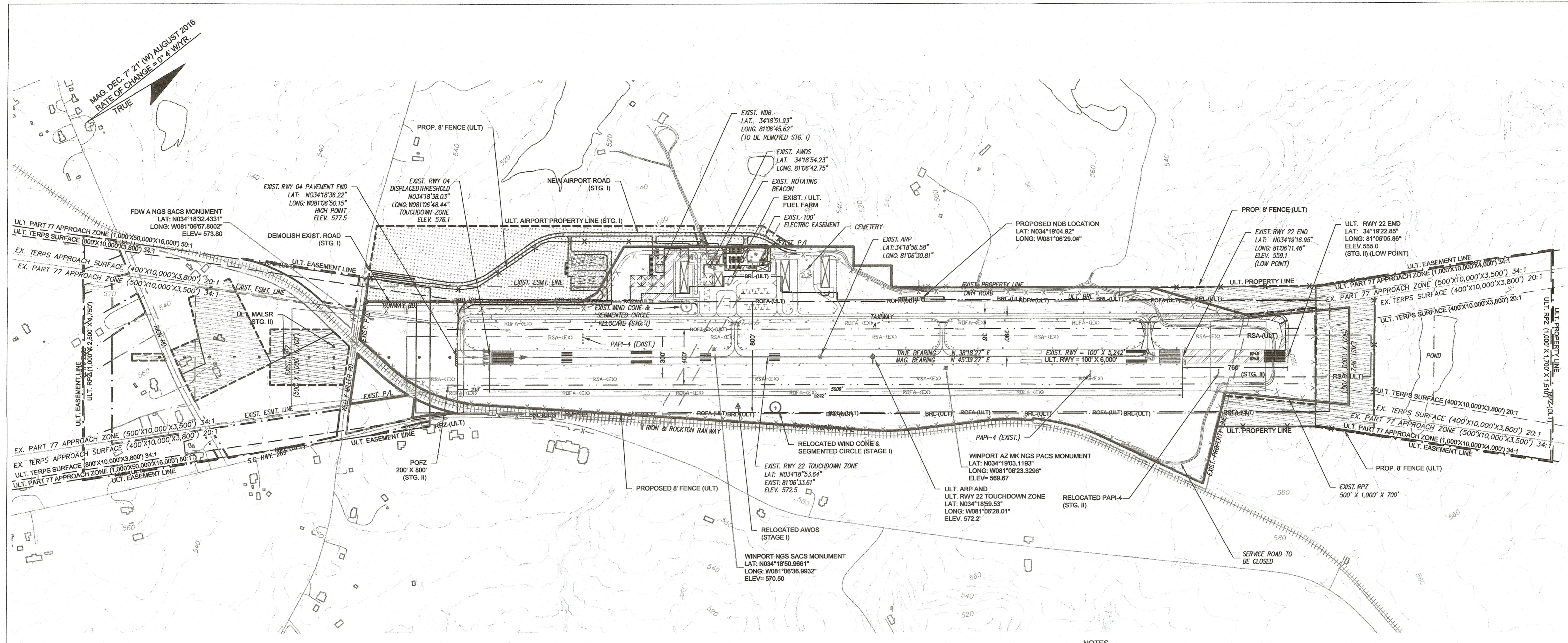


PROFESSIONAL SEAL

NO.	DATE	DESCRIPTION	BY

PLANNING DOCUMENT - FINAL



RUNWAY 4-22 DATA TABLE				
DESCRIPTION	EXISTING	STAGE I	STAGE II	STAGE III
EFFECTIVE GRADIENT (%)	0.3	N/C	N/C	N/C
MAXIMUM GRADE CHANGE	0.03%	N/C	N/C	N/C
WIND COVERAGE (ALL WEATHER)	(13 KNOTS/15 MPH) 98.18%	N/C	N/C	N/C
WIND COVERAGE (IFR)	(13 KNOTS/15 MPH) 98.62%	N/C	N/C	N/C
MAX. ELEVATION (MSL)	577.0	N/C	N/C	N/C
RUNWAY (LENGTH X WIDTH)	5,242' X 100'	N/C	6,002' X 100'	N/C
DISPLACED THRESHOLD	RWY 4 - 233'	N/C	N/C	N/C
USABLE RUNWAY LENGTH	5,242'	N/C	6,002'	N/C
SURFACE TYPE	ASPHALT	N/C	N/C	N/C
PAVEMENT STRENGTH (SINGLE WHEEL)	42,000 LBS.	N/C	50,000 LBS.	N/C
PAVEMENT STRENGTH (DUAL WHEEL)	60,000 LBS.	N/C	75,000 LBS.	N/C
PAVEMENT CLASSIFICATION NUMBER (PCN)	N/A	N/C	18 F/C/X/U	N/C
TAXIWAY/TAXILANE WIDTH	35'	N/C	N/C	N/C
TAXIWAY/TAXILANE SAFETY AREA (TSA) WIDTH	75'	N/C	N/C	N/C
TAXIWAY OBJECT FREE AREA (OFA) WIDTH	131'	N/C	N/C	N/C
TAXILANE OBJECT FREE AREA (OFA) WIDTH	115'	N/C	N/C	N/C
APPROACH SURFACE SLOPE (RWY 4)	34:1 (NON-PRECISION) 500'X10,000'X3,500'	34:1 (NON-PRECISION) 1,000'X10,000'X4,000'	50:1 (PRECISION) 1,000'X50,000'X16,000'	N/C
APPROACH SURFACE SLOPE (RWY 22)	34:1 (NON-PRECISION) 500'X10,000'X3,500'	34:1 (NON-PRECISION) 1,000'X10,000'X4,000'	N/C	N/C
APPROACH MINIMUMS (RWY 4)	250 - 1 MILE	250 - 3/4 MILE	200 - 1/2 MILE	N/C
APPROACH MINIMUMS (RWY 22)	250 - 7/8 MILE	250 - 3/4 MILE	N/C	N/C
VISUAL APPROACH AIDS	PAPI-4 (4-22), ROTATING BEACON	N/C	PAPI-4 (4-22), MALSR, ROTATING BEACON	N/C
INSTRUMENT APPROACH AIDS	RNAV GPS LPV (4222), NDB	N/C	N/C	N/C
RUNWAY LIGHTING	MIRL	N/C	N/C	N/C
RUNWAY MARKING (422)	NP/INPI	N/C	PIR/INPI	N/C
RUNWAY DESIGN CODE (RDC)	B-II-4000	N/C	B-II-2400	N/C
CRITICAL AIRCRAFT	BEECH KING AIR 350	N/C	DASSAULT FALCON 900	N/C
OBJECT FREE AREA (OFA) (WIDTH)	500'	N/C	800'	N/C
(OFA) LENGTH BEYOND RUNWAY	300'	N/C	500'	N/C
RUNWAY SAFETY AREA (RSA) (WIDTH)	300'	N/C	N/C	N/C
(RSA) LENGTH BEYOND RUNWAY	600'	N/C	N/C	N/C
OBSTACLE FREE ZONE (OFZ) (WIDTH)	400'	N/C	N/C	N/C
(OFZ) LENGTH BEYOND RUNWAY	200'	N/C	N/C	N/C
FAR PART 77 APPROACH CATEGORY (422)	C/C	D/D	PIR/D	N/C
RUNWAY PROTECTION ZONE (RPZ) RWY 4	500'X1,000'X700'	1,000'X1,700'X1,510'	1,000'X2,500'X1,750'	N/C
RUNWAY PROTECTION ZONE (RPZ) RWY 22	1,000'X1,700'X1,510'	N/C	N/C	N/C
RUNWAY 4 LATITUDE	34° 18' 36.22" N	N/C	N/C	N/C
RUNWAY 4 LONGITUDE	81° 06' 50.15" W	N/C	N/C	N/C
RUNWAY 4 DISPLACED THRESHOLD LATITUDE	34° 18' 38.03" N	N/C	N/C	N/C
RUNWAY 4 DISPLACED THRESHOLD LONGITUDE	81° 06' 48.44" W	N/C	N/C	N/C
RUNWAY 22 LATITUDE	34° 19' 16.95" N	N/C	34° 19' 22.85" N	N/C
RUNWAY 22 LONGITUDE	81° 06' 11.46" W	N/C	81° 06' 05.86" W	N/C
RUNWAY END ELEVATION (ASL) RWY 4	577.5 (SURVEYED)	N/C	N/C	N/C
RUNWAY END ELEVATION (ASL) RWY 22	559.1 (SURVEYED)	N/C	555.0	N/C
DISPLACED THRESHOLD ELEVATION (MSL)	RWY 4 - 576.1	N/C	N/C	N/C
RUNWAY 4 TDZ ELEVATION (MSL)	576.1	N/C	N/C	N/C
RUNWAY 22 TDZ ELEVATION (MSL)	572.5	N/C	572.2	N/C
RUNWAY SHOULDER WIDTH	15'	N/C	N/C	N/C
LINE OF SIGHT VIOLATIONS	NONE	N/C	N/C	N/C

AIRPORT DATA TABLE		
DESCRIPTION	EXISTING	ULTIMATE
AIRPORT ELEVATION (MSL)	577.0	N/C
AIRPORT REFERENCE POINT (NAD 83)	34° 18' 55.70" N 81° 06' 31.70" W	34° 18' 59.53" N 81° 06' 28.01" W
MEAN MAXIMUM TEMPERATURE (HOTTEST MONTH)	92° (F)	N/C
AIRPORT TERMINAL AREA NAVAIDS	GPS, ROTATING BEACON, NDB	GPS, ROTATING BEACON, MALSR
MISCELLANEOUS FACILITIES	LIGHTED WIND CONE, AWOS III	N/C
MAGNETIC VARIATION	7° 31' 48" (W)	N/A
DATE OF MAGNETIC VARIATION	AUGUST 2016	N/C
NPAS SERVICE LEVEL	GENERAL AVIATION	N/C
STATE CLASSIFICATION	SC-II	N/C
AIRPORT REFERENCE CODE (ARC)	B-II	N/C
TAXIWAY STRENGTH	42,000 LBS. SW	50,000 LBS. SW
TAXIWAY LIGHTING	MIRL	N/C
TAXIWAY MARKING	YES	N/C
GPS AVAILABILITY AT AIRPORT	RUNWAY 4 (STRAIGHT-IN) RUNWAY 22 (STRAIGHT-IN)	N/C

LEGEND		
EXISTING	DESCRIPTION	ULTIMATE
---	RUNWAY MARKING	---
---	RUNWAY SAFETY AREA (RSA)	---
---	RUNWAY OBJECT FREE AREA (ROFA)	---
---	RUNWAY OBSTACLE FREE ZONE (ROFZ)	---
---	RUNWAY PROTECTION ZONE (RPZ)	---
---	TAXIWAY OBJECT FREE AREA (TOFA)	---
---	TAXIWAY SAFETY AREA (TSA)	---
---	BUILDING RESTRICTION LINE (BRL)	---
---	AIRPORT PAVEMENT	---
---	AIRPORT REFERENCE POINT	---
---	AIRPORT BUILDINGS	---
---	OTHER BUILDINGS	---
---	AIRPORT PROPERTY LINE	---
---	AIRPORT EASEMENT LINE	---
---	OTHER PROPERTY LINES	---
---	RAILROAD	---
---	FENCE	---
---	ROADS	---
---	TREE LINE	---
---	WETLANDS	---
---	GROUND ELEVATION CONTOURS	---
---	DITCH/CREEK	---
---	THRESHOLD LIGHTS	---
---	PAVEMENT TO BE REMOVED	---
---	STAGE I (0-5 YEARS)	---
---	STAGE II (6-10 YEARS)	---
---	STAGE III (11-20 YEARS)	---

CONDITIONALLY APPROVED
FEDERAL AVIATION ADMINISTRATION
APPROVAL SUBJECT TO COMMENTS IN APPROVAL LETTER

[Signature]
APPROVING OFFICIAL
ATLANTA AIRPORTS DISTRICT OFFICE

8/30/18
DATE

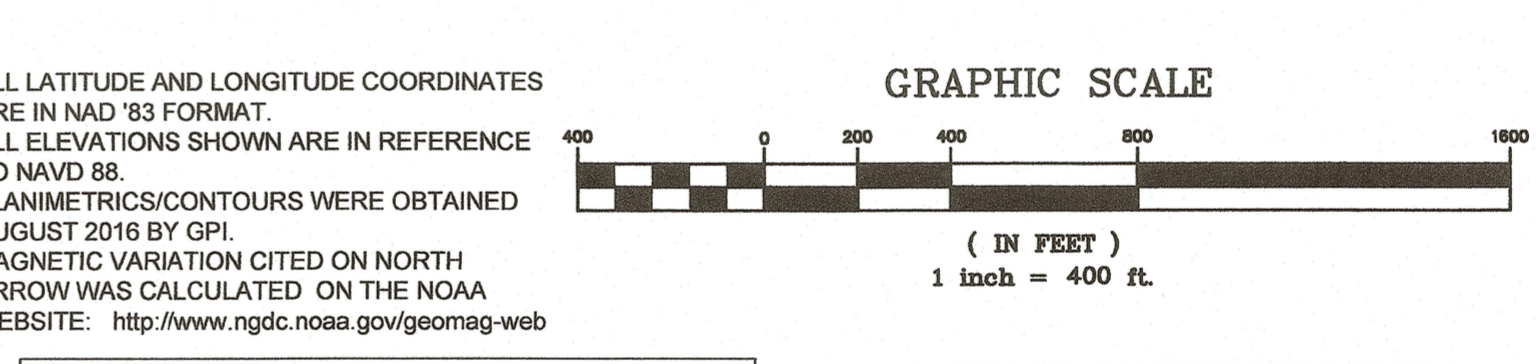
FAA APPROVAL STAMP

EXISTING DECLARED DISTANCES		
	RUNWAY 4	RUNWAY 22
TORA	5,242'	5,242'
TOGA	5,242'	5,242'
ASDA	5,242'	5,009'
LDA	5,009'	5,009'

ULTIMATE DECLARED DISTANCES		
	RUNWAY 4	RUNWAY 22
TORA	6,002'	6,002'
TOGA	6,002'	6,002'
ASDA	6,002'	5,789'
LDA	5,789'	5,789'

"THE PREPARATION OF THIS DOCUMENT WAS FINANCED IN PART THROUGH A PLANNING GRANT FROM THE FEDERAL AVIATION ADMINISTRATION AND THE SOUTH CAROLINA AERONAUTICS COMMISSION AS PROVIDED UNDER SECTION 505 OF THE AIRPORT AND AIRWAY IMPROVEMENT ACT OF 1982. THE CONTENTS DO NOT NECESSARILY REFLECT THE OFFICIAL VIEWS OR POLICY OF THE FAA.

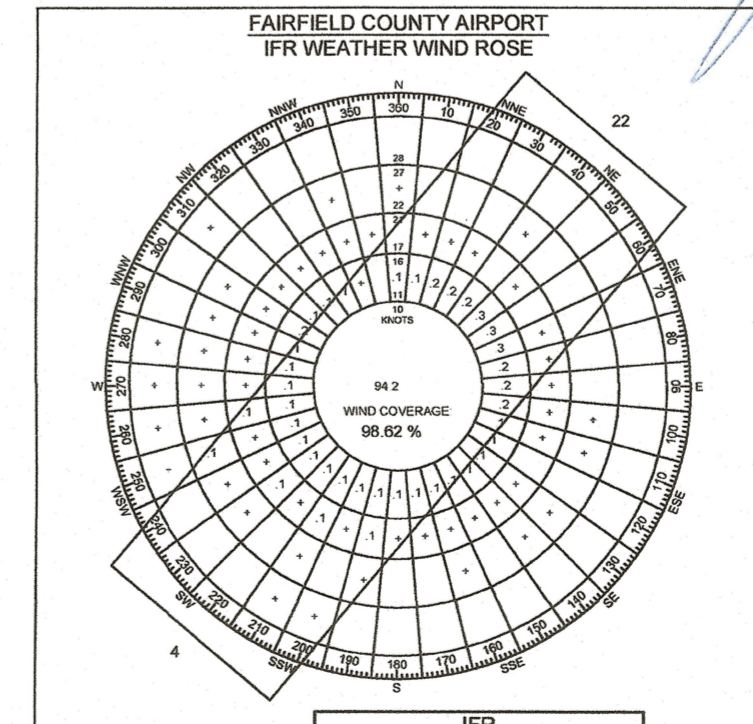
ACCEPTANCE OF THIS REPORT BY THE FAA/SCAC DOES NOT IN ANY WAY CONSTITUTE A COMMITMENT ON THE PART OF THE UNITED STATES TO PARTICIPATE IN ANY DEVELOPMENT DEPICTED THEREIN NOR DOES IT INDICATE THAT THE PROPOSED DEVELOPMENT IS ENVIRONMENTALLY ACCEPTABLE IN ACCORDANCE WITH APPROPRIATE PUBLIC LAWS."



CONSTRUCTION NOTICE REQUIREMENT
TO PROTECT OPERATIONAL SAFETY AND FUTURE DEVELOPMENT, ALL PROPOSED CONSTRUCTION ON THE AIRPORT MUST BE COORDINATED BY THE AIRPORT OWNER WITH THE FAA AIRPORTS DISTRICT OFFICE PRIOR TO CONSTRUCTION. FAA'S REVIEW TAKES APPROXIMATELY 60 DAYS.

THIS SIGNATURE CERTIFIES SPONSOR'S APPROVAL OF THE INFORMATION CONTAINED IN THIS PLAN.

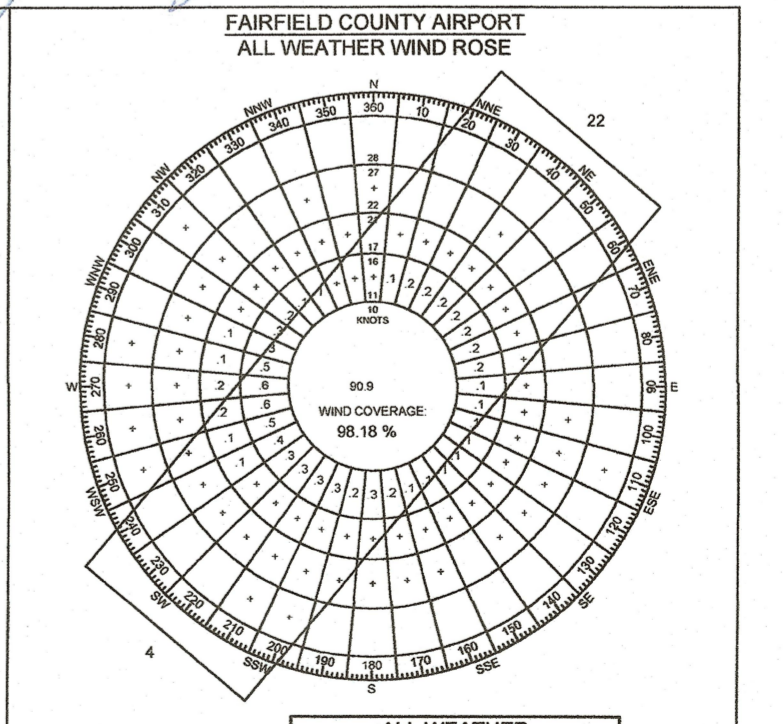
[Signature]
DATE: 8/13/18
JASON TAYLOR
FAIRFIELD COUNTY ADMINISTRATOR



DIRECTION	IFR		
	10.5 KTS/ 12 MPH	13 KTS/ 15 MPH	16 KTS/ 18 MPH
4	50.01	50.45	50.85
22	21.93	22.50	22.98
CALMS	25.80	25.80	25.80
TOTAL	97.61	98.62	99.50
NOT COVERED	2.39	1.38	0.50

NOTE: MAY NOT TOTAL DUE TO ROUNDING

SOURCE: NATIONAL OCEANIC AND ATMOSPHERIC ADMINISTRATION
STATION: COLUMBIA METROPOLITAN AIRPORT
COLUMBIA, SC
PERIOD COVERED 2006-2015



DIRECTION	ALL WEATHER		
	10.5 KTS/ 12 MPH	13 KTS/ 15 MPH	16 KTS/ 18 MPH
4	33.04	33.43	33.80
22	37.85	39.21	40.20
CALMS	25.65	25.65	25.65
TOTAL	96.42	98.18	99.52
NOT COVERED	3.58	1.82	0.48

NOTE: MAY NOT TOTAL DUE TO ROUNDING

SOURCE: NATIONAL OCEANIC AND ATMOSPHERIC ADMINISTRATION
STATION: COLUMBIA METROPOLITAN AIRPORT
COLUMBIA, SC
PERIOD COVERED 2006-2015

PROJECT NAME: FAIRFIELD COUNTY AIRPORT (FDW) AIRPORT LAYOUT PLAN WINNSBORO, SOUTH CAROLINA

DRAWING TITLE: AIRPORT LAYOUT PLAN

PROJ. MGR.: JJB
DESIGN BY: FDL
DRAWN BY: FDL
PROJ. DATE: 12-14-2017
DRAWING NUMBER:
2 OF 13
WKD PROJ. NO.: 20150142.00.CA