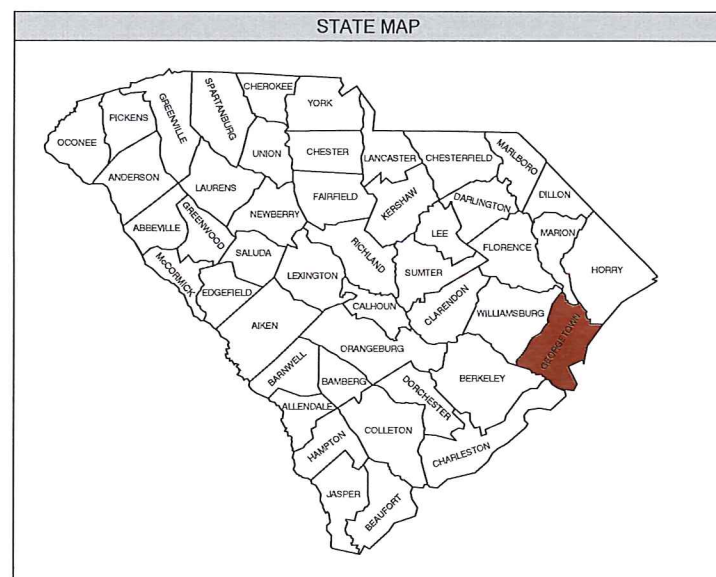
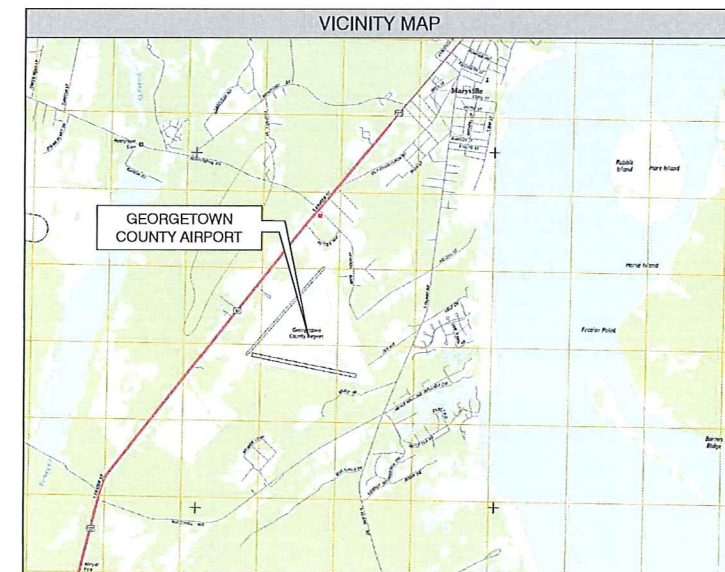
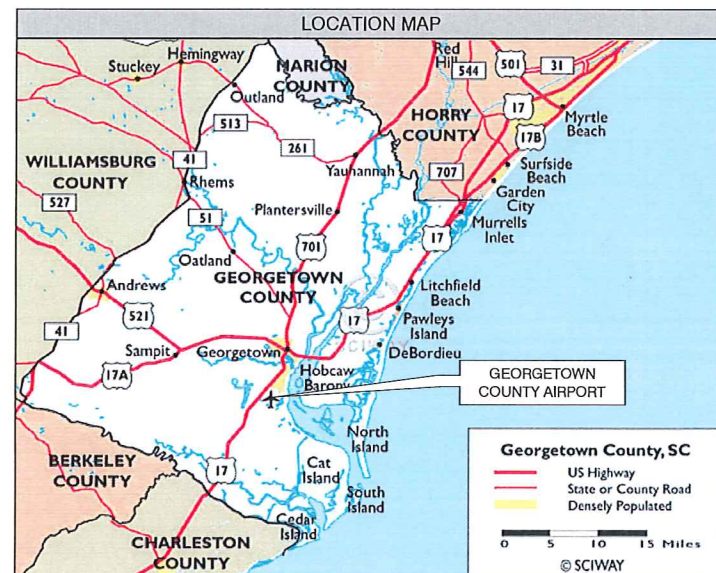


# Georgetown County Airport Airport Layout Plan

Georgetown County  
Georgetown, South Carolina  
September 2018

AIP Grant #3-45-0025-018-2016



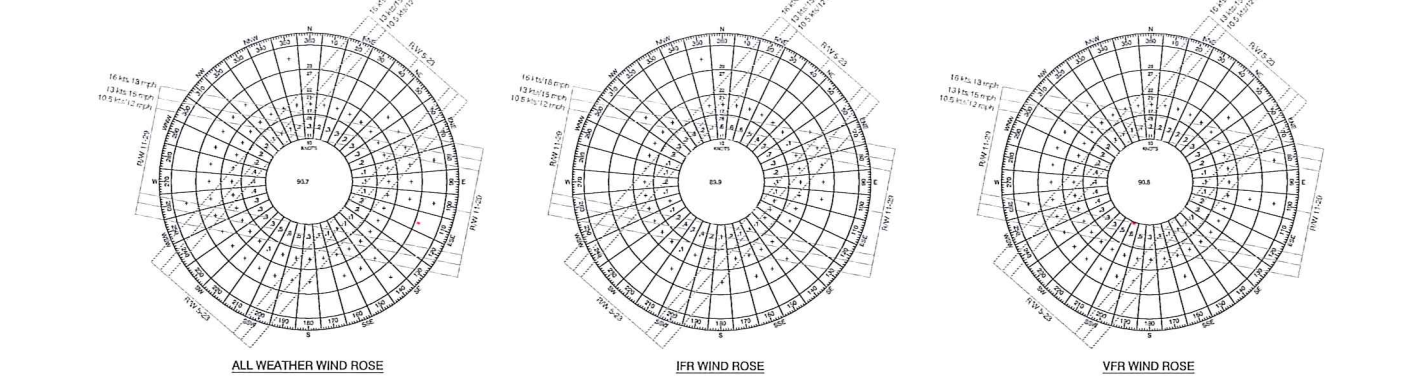
INDEX OF DRAWINGS	
SHEET NUMBER	DESCRIPTION
1	TITLE SHEET
2	AIRPORT DATA SHEET
3	AIRPORT LAYOUT PLAN DRAWING - EXISTING
4	AIRPORT LAYOUT PLAN DRAWING - PROPOSED
5	AIRPORT AIRSPACE DRAWING
6	INNER PORTION OF THE APPROACH SURFACE DRAWING - RUNWAY 5
7	INNER PORTION OF THE APPROACH SURFACE DRAWING - RUNWAY 23
8	INNER PORTION OF THE APPROACH SURFACE DRAWING - RUNWAY 11
9	INNER PORTION OF THE APPROACH SURFACE DRAWING - RUNWAY 29
10	TERMINAL AREA DRAWING
11	LAND USE DRAWING
12	AIRPORT PROPERTY MAP

GEORGETOWN COUNTY		
9.04.19		COUNTY ADMINISTRATOR
DATE	SIGNATURE	TITLE
FEDERAL AVIATION ADMINISTRATION		
DATE	SIGNATURE	TITLE

 Arora Engineers, Inc. 1150 Wood Peachtree Street NW, Suite 1500 Atlanta, GA 30309 Tel: 478-231-8699 Fax: 404-459-7200		 TALENTED & BOUNDLESS COURAGE 1150 WOOD PEACHTREE STREET, N.W. SUITE 1500 ATLANTA, GA 30309	PROJECT NAME: GEORGETOWN COUNTY AIRPORT GEORGETOWN, SOUTH CAROLINA DRAWING TITLE: TITLE SHEET
1	09/2018	New ALP	PROJECT NO. 2601-1601 DRAWN BY: WA CHECKED BY: MS SCALE: AS SHOWN DATE: SEP 2018 DRAWING NO. 1



DESCRIPTION	RUNWAY DATA								
	EXISTING RUNWAY 5/23		EXISTING RUNWAY 11/29 (UTILITY)		FUTURE RUNWAY 5/23		FUTURE RUNWAY 11/29		
RUNWAY NUMBER	5	23	11	29	5	23	11	29	
RUNWAY LENGTH (FT.)	6,005	6,005	4,539	4,539	6,005	6,005	4,539	4,539	
TRUE BEARING	41°	221°	101°	281°	41°	221°	101°	281°	
MAGNETIC BEARING (8° 0'W, YEAR 2015)	49°	229°	109°	289°	49°	229°	109°	289°	
DISPLACED THRESHOLD (FT.)	N/A	N/A	N/A	N/A	N/A	N/A	N/A	N/A	
RUNWAY WIDTH (FT.)	100	100	150	150	100	100	75	75	
PAVEMENT TYPE	ASPHALT (GOOD)	ASPHALT (GOOD)	ASPHALT (POOR)	ASPHALT (POOR)	ASPHALT (GOOD)	ASPHALT (GOOD)	ASPHALT (GOOD)	ASPHALT (GOOD)	
STRENGTH BY PCN	13/F/B/Y/T	13/F/B/Y/T	N/A	N/A	13/F/B/Y/T	13/F/B/Y/T	N/A	N/A	
PAVEMENT SURFACE TREATMENT	N/A	N/A	N/A	N/A	N/A	N/A	N/A	N/A	
PAVEMENT STRENGTH FOR (S) SINGLE, (D) DUAL, (DT) DUAL-TANDEM, AND (DDT) DOUBLE DUAL TANDEM GEARED AIRCRAFT	S-40 D-60	S-40 D-60	S-20 D-30	S-20 D-30	S-40 D-60	S-40 D-60	S-20 D-30	S-20 D-30	
RUNWAY LIGHTING	MIRL	MIRL	MIRL	MIRL	MIRL	MIRL	MIRL	MIRL	
RUNWAY MARKING	NPI	NPI	BASIC	BASIC	NPI	NPI	BASIC	BASIC	
VISIBILITY MINIMUMS	5/8 MI	1 MI	VISUAL	VISUAL	1/2 MI	5/8 MI	VISUAL	VISUAL	
NAVIGATIONAL AND VISUAL AIDS	PAPI, ODALS, REIL	PAPI	N/A	N/A	PAPI, MALSR	PAPI, ODALS	N/A	N/A	
AERONAUTICAL SURVEY REQUIRED FOR APPROACH	VG (FAA AC 150/5300-18B)	VG (FAA AC 150/5300-18B)	N/A	N/A	N/A	N/A	N/A	N/A	
RUNWAY DESIGN CODE (RDC)	C/II/2400	C/II/5000	B/II(S)/MIS	B/II(S)/MIS	C/II/2400	C/II/2400	B/II(S)/MIS	B/II(S)/MIS	
EFFECTIVE GRADIENT	-0.1%	+0.1%	-0.3%	+0.3%	-0.1%	+0.1%	-0.3%	+0.3%	
INSTRUMENT APPROACH	RNAV, GPS	GPS, RNAV	NONE (VISUAL)	NONE (VISUAL)	RNAV, GPS	RNAV, GPS	NONE (VISUAL)	NONE (VISUAL)	
PART 77 APPROACH SLOPE AND CATEGORY	34:1 D	34:1 C	20:1 A	20:1 A	34:1 D	34:1 D	20:1 A	20:1 A	
HORIZONTAL / VERTICAL DATUM	NAD83 / NAVD88	NAD83 / NAVD88	NAD83 / NAVD88	NAD83 / NAVD88	NAD83 / NAVD88	NAD83 / NAVD88	NAD83 / NAVD88	NAD83 / NAVD88	
RUNWAY PROTECTION ZONE (RPZ)	LENGTH	2,500	1,700	1,000	1,000	2,500	2,500	1,000	1,000
	WIDTH 1	1,000	500	250	250	1,000	1,000	250	250
	WIDTH 2	1,750	1,010	450	450	1,750	1,750	450	450
RUNWAY SHOULDER WIDTH (FT.)	10'	10'	10'	10'	10'	10'	10'	10'	
RUNWAY SAFETY AREA (RSA) WIDTH (FT.)	500	500	150	150	500	500	150	150	
RSA LENGTH PRIOR TO LANDING THRESHOLD (FT.)	N/A	N/A	N/A	N/A	N/A	N/A	N/A	N/A	
RSA LENGTH BEYOND RUNWAY END (FT.)	1,000	1,000	300	300	1,000	1,000	300	300	
RUNWAY OBJECT FREE AREA (ROFA) WIDTH (FT.)	800	800	500	500	800	800	500	500	
ROFA LENGTH BEYOND RUNWAY END (FT.) (1)	1,000	1,000	300	300	1,000	1,000	300	300	
RUNWAY OBSTACLE FREE ZONE (ROFZ) LENGTH (FT.)	6,205	6,205	4,739	4,739	6,205	6,205	4,739	4,739	
ROFZ LENGTH BEYOND RUNWAY END (FT.) (1)	200	200	250	250	200	200	250	250	
ROFZ WIDTH (FT.)	400	400	250	250	400	400	250	250	
INNER APPROACH OBSTACLE FREE ZONE (FT.) WIDTH	400	N/A	N/A	N/A	400	400	N/A	N/A	
INNER APPROACH OBSTACLE FREE ZONE (FT.) SLOPE	50:1	N/A	N/A	N/A	50:1	50:1	N/A	N/A	
INNER APPROACH OBSTACLE FREE ZONE (FT.) BEYOND LAST LIGHT	200	N/A	N/A	N/A	200	200	N/A	N/A	
INNER TRANSITIONAL OBSTACLE FREE ZONE (FT.) SLOPE	6:1	6:1	N/A	N/A	6:1	6:1	N/A	N/A	
RUNWAY END	LATITUDE	33d18'27.11"N	33d18'11.66"N	33d18'34.46"N	33d18'25.56"N	33d18'27.11"N	33d18'11.66"N	33d18'34.46"N	33d18'25.56"N
	LONGITUDE	79d19'42.32"W	79d18'55.53"W	79d19'31.70"W	79d19'39.28"W	79d19'42.32"W	79d18'55.53"W	79d19'31.70"W	79d19'39.28"W
RUNWAY END ELEVATION (NAVD88) (MSL)	39.5	33.5	37.2	23.0	39.5	33.5	37.2	23.0	
TOUCHDOWN ZONE END (TDZE) ELEVATION (NAVD88) (MSL) (FAA AC 150/5300-13A, TABLE 3-2)	39.5	36.7	37.2	23.0	39.5	36.7	37.2	23.0	
THRESHOLD SITING SURFACE (FAA EB 99 REVISION TO AC 150/5300-13A, TABLE 3-2)	TYPE 5	TYPE 4	TYPE 2	TYPE 2	TYPE 5	TYPE 5	TYPE 2	TYPE 2	
RUNWAY DEPARTURE SURFACE (DIMS / SLOPES)	1,000 x 6,466 x 10,200 1:40:1	1,000 x 6,466 x 10,200 1:40:1	N/A	N/A	1,000 x 6,466 x 10,200 1:40:1	1,000 x 6,466 x 10,200 1:40:1	N/A	N/A	
DISPLACED THRESHOLD	LATITUDE	N/A	N/A	N/A	N/A	N/A	N/A	N/A	
	LONGITUDE	N/A	N/A	N/A	N/A	N/A	N/A	N/A	
DISPLACED THRESHOLD ELEVATION (NAVD88) (MSL)	N/A	N/A	N/A	N/A	N/A	N/A	N/A	N/A	
DECLARED DISTANCES	TORA	6,005	6,005	4,539	4,539	6,005	6,005	4,539	
	TODA	6,005	6,005	4,539	4,539	6,005	6,005	4,539	
	ASDA	6,005	6,005	4,539	4,539	6,005	6,005	4,539	
	LDA	6,005	6,005	4,539	4,539	6,005	6,005	4,539	
(1) MEASURED FROM END OF RUNWAY									



RUNWAY	WIND ROSE CALCULATIONS & WIND COVERAGE DATA								
	10.5 KTS/ 12 MPH			13 KTS/ 15 MPH			16 KTS/ 18 MPH		
	VFR	ALL	IFR	VFR	ALL	IFR	VFR	ALL	IFR
5-23	97.22%	97.23%	97.37%	98.75%	98.74%	98.65%	99.83%	99.81%	99.68%
11-29	95.59%	95.42%	93.90%	97.69%	97.60%	96.87%	99.67%	99.66%	99.53%
COMBINE	99.35%	99.32%	99.11%	99.89%	99.88%	99.79%	99.99%	99.98%	99.95%

WIND DATA SOURCE: NATIONAL CLIMATIC DATA CENTER  
US DEPT OF COMMERCE  
ASHEVILLE, NORTH CAROLINA

STATION: GEORGETOWN SOUTH CAROLINA  
PERIOD OF RECORD:  
JAN 1, 2009 - DEC 31, 2016

ABBREVIATIONS	
ARP	AIRPORT REFERENCE POINT
ARC	AIRPORT REFERENCE CODE
AWOS	AUTOMATED WEATHER OBSERVING SYSTEM
BRL	BUILDING RESTRICTION LINE
C.A.	CRITICAL AREA
FT.	FEET
HP	HIGH POINT
HT.	HEIGHT
LP	LOW POINT
MI.	MILE
MIRL	MEDIUM INTENSITY RUNWAY LIGHTS
MITL	MEDIUM INTENSITY TAXIWAY LIGHTS
MSL	MEAN SEA LEVEL
N/A	NON-APPLICABLE
NAD83	NORTH AMERICAN DATUM OF 1983
NAVD88	NORTH AMERICAN VERTICAL DATUM OF 1988
NAVAID	NAVIGATIONAL AID
NPA	NON-PRECISION APPROACH
PAPI	PRECISION APPROACH PATH INDICATOR
REIL	RUNWAY END IDENTIFIER LIGHTS
REL	RUNWAY END LIGHTS
R/W	RUNWAY
RPZ	RUNWAY PROTECTION ZONE
ROFA	RUNWAY OBJECT FREE AREA
ROFZ	RUNWAY OBSTACLE FREE ZONE
RSA	RUNWAY SAFETY AREA
SWL	SINGLE WHEEL LOAD
TDZE	TOUCHDOWN ZONE ELEVATION
T/W	TAXIWAY

AIRPORT DATA		
ITEM	EXISTING	FUTURE
AIRPORT ELEVATION (FEET AMSL)	39.5	39.5
AIRPORT REFERENCE POINT (ARP) (NAD 83, NAVD88)	LAT. 33° 18' 41.1" N LONG. 79° 19' 13.1" W	LAT. 33° 18' 41.1" N LONG. 79° 19' 13.1" W
MAGNETIC DECLINATION	8° 27' W	8° 27' W
MEAN/MAX. TEMPERATURE	90.0° F	90.0° F
TERMINAL NAVAIDS - OWNED BY GEORGETOWN COUNTY	BEACON, MIRL, PAPI, REIL, ODALS, GPS	BEACON, MIRL, PAPI, REIL, ODALS, GPS, MALSR
MISCELLANEOUS FACILITIES - OWNED BY GEORGETOWN COUNTY	AWOS (500' CRITICAL AREA) VAISALA IIIPT, WINDSOCK / CIRCLE	AWOS (500' CRITICAL AREA) VAISALA IIIPT, WINDSOCK / CIRCLE
DESIGN AIRCRAFT (RW LENGTH)	5-23 CITATION X 11-29 KING AIR 200	CITATION X KING AIR 200
AIRPORT REFERENCE CODE	5-23 C-II 11-29 B-II	C-II B-II
TAXIWAY MARKING	CENTERLINE	CENTERLINE
TAXIWAY LIGHTING	MITL	MITL
NPIAS / ASSET / STATE CATEGORY	GA / REGIONAL / SCII (CORPORATE/BUSINESS)	GA / REGIONAL / SCII (CORPORATE/BUSINESS)
OWNER	GEORGETOWN COUNTY, SC	GEORGETOWN COUNTY, SC

MODIFICATION TO STANDARDS			
APPROVAL DATE	AIRSPACE CASE No.	STANDARD TO BE MODIFIED	DESCRIPTION
NONE REQUIRED			

TAXIWAY/TAXIWAY DATA								
ID	EX/FUT WIDTH (FT)	EX/FUT TSA (FT)	EX/FUT TOFA (FT)	EXISTING / FUTURE TLOFA (FT)	EX/FUT FIXED OR MOVABLE OBJECT DIST. FROM CL (FT)	MINIMUM ALLOWABLE TWY CL CLEARANCE	MINIMUM ALLOWABLE TAXI CL CLEARANCE	TAXIWAY LIGHTING
A	40	79	131	N/A	174	65.5	N/A	MITL
B	40	79	131	N/A	N/A	65.5	N/A	MITL (Partial)
C	40	79	131	N/A	N/A	65.5	N/A	MITL
D	40	79	131	N/A	N/A	65.5	N/A	MITL
TAXIWAYS	VARIABLES	79	N/A	115	57.5	N/A	57.5	N/A

### LEGEND

- AIRPORT PROPERTY LINE
- RUNWAY SAFETY AREA
- BUILDING RESTRICTION LINE (BRL)
- RUNWAY OBSTACLE FREE ZONE
- RUNWAY OBJECT FREE AREA
- TAXIWAY OBJECT FREE AREA
- TAXIWAY SAFETY AREA
- TAXIWAY SAFETY AREA
- RUNWAY PROTECTION ZONE
- PART 77 APPROACH SURFACE
- THRESHOLD SITING SURFACE (TSS)
- GLIDE PATH QUAL. SURFACE (GOS)
- PAPI OBSTACLE CLEARANCE SURFACE (OCS)
- DEPARTURE SURFACE
- FUTURE LAND ACQUISITION / FUTURE PROPERTY LINE
- PRECISION OBSTACLE FREE ZONE (POFZ)
- LIGHTED WIND CONE
- HAVOIDS
- AIRFIELD LIGHTS
- GROUND CONTOURS
- HIGH POINT
- LOW POINT
- FENCE LINE
- MUNICIPAL BOUNDARY
- RECOMMENDED AIRPORT LAND USE RESTRICTION ZONE BOUNDARY
- RECOMMENDED AIRPORT LAND USE RESTRICTION DESIGNATION
- HEAVY INDUSTRIAL
- OBSTRUCTION (PROFILE)
- OBSTRUCTION (PLAN)
- GROUND (PROFILE)
- POLE (PROFILE)
- EXISTING BUILDING (PROFILE)
- FUTURE BUILDING (PROFILE)
- EXISTING / FUTURE ROAD (PROFILE)
- EXISTING BUILDINGS (ON-AIRPORT) W/ID
- AIRPORT REFERENCE POINT (ARP)
- EXISTING ROADWAYS
- EXISTING BUILDING FACILITIES
- RUNWAY PAVEMENT
- TAXIWAY PAVEMENT
- SHOULDERS & APRON PAVEMENT
- HORIZONTAL CONTROL POINT (PACS/SACS)
- FUTURE FACILITY ID
- EXISTING / FUTURE FACILITY
- FUTURE LAND ACQUISITION
- FUTURE BUILDING FACILITY
- FUTURE PAVEMENT
- PAVEMENT TO BE PAINTED OR REMOVED
- REMOVED PAVEMENT
- BUILDING TO BE REMOVED
- TOUCHDOWN ZONE
- GENERALIZED EXISTING COUNTY OR CITY ZONING DESIGNATION (SEE NOTE 6 ON SOURCES AND OBTAINING ZONING AREA BOUNDARIES)
- SCHOOL
- HOSPITAL / HEALTH CARE FACILITY
- CHURCH / PLACE OF WORSHIP
- TREE (PROFILE)
- NAVIDS & SIGNS (PROFILE)
- WALL (PROFILE)
- BUILDING (PROFILE)
- FENCE (PROFILE)
- ROAD (PROFILE)

\* APPROXIMATE FOR REFERENCE ONLY

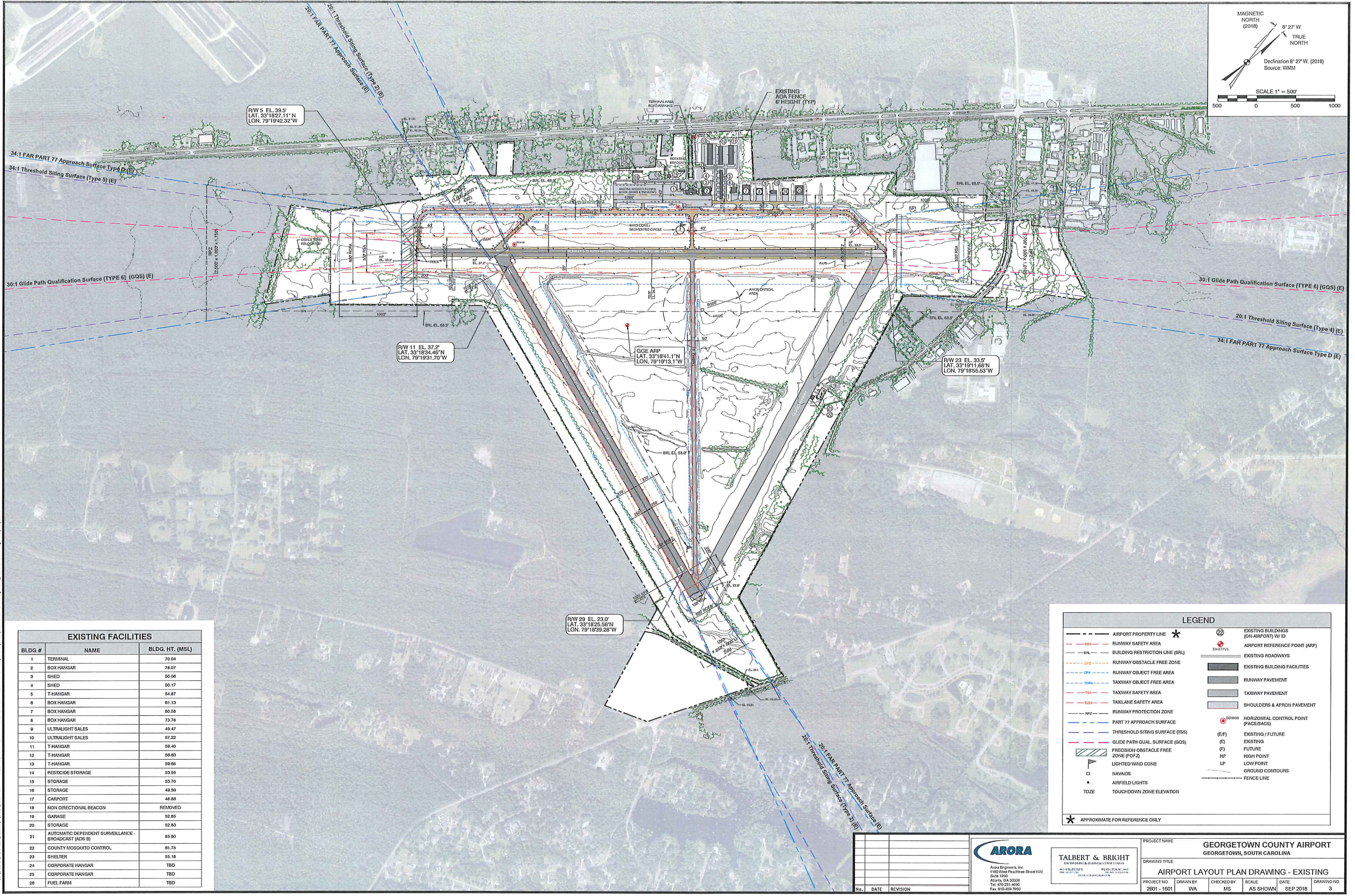
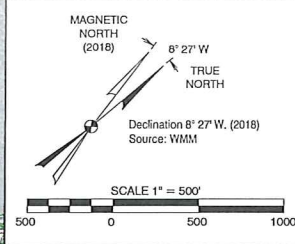
DATA SOURCES  
[http://www.faa.gov/airports/airtraffic/airports/airport\\_safety\\_data\\_5010](http://www.faa.gov/airports/airtraffic/airports/airport_safety_data_5010)  
[https://www.faa.gov/air\\_traffic/flight\\_info/aeronautical/Airport\\_Data](https://www.faa.gov/air_traffic/flight_info/aeronautical/Airport_Data)  
<http://www.georgetowncountyairport.com/Default2.htm>  
<http://www.scaeronautics.com/airport.asp>  
<http://www.airnav.com/airport/KGGE>  
<https://airports-gis.faa.gov/ndbInfo/>  
<https://airports-gis.faa.gov/gis/airports/p481700000/airportDesignTools.jsp>  
 UDDF file named 2018\_GGE\_VGA\_8326.SPC.ctd from  
<https://ndb.faa.gov/ndbApp/services/publicData/ndbList.jsp>  
 FAA Advisory Circle 150-5300.13 Airport Design, including Chapters 1 through 17  
 Updated Aerial provided October 2017.

THE INFORMATION PRESENTED ON THIS DRAWING WAS PREPARED TO A DEGREE OF ACCURACY SUITABLE FOR PLANNING PURPOSES USING (1) FEDERAL AVIATION ADMINISTRATION STANDARDS AND RECOMMENDATIONS THAT WERE CURRENT AS OF THE DATE OF THIS DRAWING, (2) ASSUMPTIONS REVIEWED AND AGREED TO BY THE GEORGETOWN COUNTY AIRPORT. THIS DRAWING SHOULD NOT BE THE BASIS FOR CONSTRUCTION DECISIONS.



PROJECT NAME		GEORGETOWN COUNTY AIRPORT GEORGETOWN, SOUTH CAROLINA			
DRAWING TITLE		AIRPORT DATA SHEET			
PROJECT NO.	DRAWN BY	CHECKED BY	SCALE	DATE	DRAWING NO.
2601 - 1601	WA	MS	AS SHOWN	SEP 2018	2





EXISTING FACILITIES		
BLDG #	NAME	BLDG. HT. (MSL)
1	TERMINAL	70.04
2	BOX HANGAR	78.07
3	SHED	50.08
4	SHED	50.17
5	T-HANGAR	54.87
6	BOX HANGAR	61.13
7	BOX HANGAR	60.58
8	BOX HANGAR	73.78
9	ULTRALIGHT SALES	49.47
10	ULTRALIGHT SALES	57.22
11	T-HANGAR	59.40
12	T-HANGAR	56.63
13	T-HANGAR	59.65
14	PESTICIDE STORAGE	53.55
15	STORAGE	53.70
16	STORAGE	49.59
17	CARPORT	48.88
18	NON DIRECTIONAL BEACON	REMOVED
19	GARAGE	52.85
20	STORAGE	52.83
21	AUTOMATIC DEPENDENT SURVEILLANCE - BROADCAST (ADS-B)	55.80
22	COUNTY MOSQUITO CONTROL	61.75
23	SHELTER	55.18
24	CORPORATE HANGAR	TBD
25	CORPORATE HANGAR	TBD
26	FUEL FARM	TBD

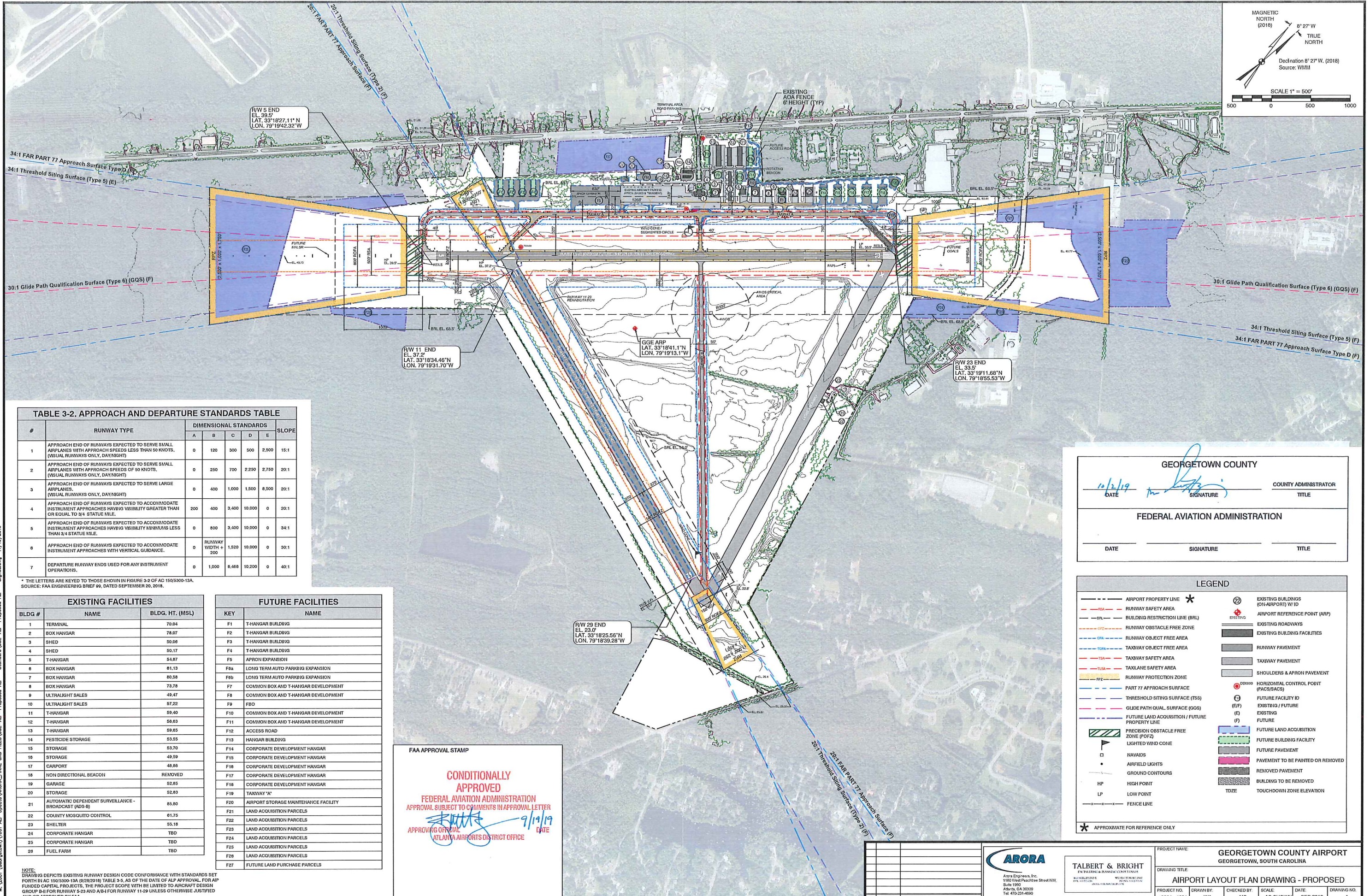
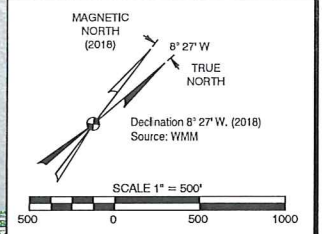
LEGEND	
---	AIRPORT PROPERTY LINE
---	RUNWAY SAFETY AREA
---	BUILDING RESTRICTION LINE (BRL)
---	RUNWAY OBSTACLE FREE ZONE
---	RUNWAY OBJECT FREE AREA
---	TAXIWAY OBJECT FREE AREA
---	TAXIWAY SAFETY AREA
---	TAXILANE SAFETY AREA
---	RUNWAY PROTECTION ZONE
---	PART 77 APPROACH SURFACE
---	THRESHOLD SITING SURFACE (TSS)
---	GLIDE PATH QUAL SURFACE (GQS)
---	PRECISION OBSTACLE FREE ZONE (POFZ)
---	LIGHTED WIND CONE
---	NAVAIDS
---	AIRFIELD LIGHTS
---	TOUCHDOWN ZONE ELEVATION
*	EXISTING BUILDINGS (ON-AIRPORT) W/ ID
*	AIRPORT REFERENCE POINT (ARP)
*	EXISTING ROADWAYS
*	EXISTING BUILDING FACILITIES
*	RUNWAY PAVEMENT
*	TAXIWAY PAVEMENT
*	SHOULDERS & APRON PAVEMENT
*	HORIZONTAL CONTROL POINT (PACS/SACS)
(E/F)	EXISTING / FUTURE
(F)	FUTURE
HP	HIGH POINT
LP	LOW POINT
---	GROUND CONTOURS
---	FENCE LINE

\* APPROXIMATE FOR REFERENCE ONLY

				PROJECT NAME <b>GEORGETOWN COUNTY AIRPORT</b> GEORGETOWN, SOUTH CAROLINA				
Arora Engineers, Inc. 1150 West Peachtree Street NW Suite 1900 Atlanta, GA 30309 Tel: 478-231-6500 Fax: 478-458-7000		ALL RIGHTS RESERVED DATE: 07/10/2018		DRAWING TITLE <b>AIRPORT LAYOUT PLAN DRAWING - EXISTING</b>				
No.	DATE	REVISION	PROJECT NO.	DRAWN BY	CHECKED BY	SCALE	DATE	DRAWING NO.
			2601 - 1601	WA	MS	AS SHOWN	SEP 2018	3

C:\Users\Avelon\Desktop\Geotown\GEORGETOWN COUNTY AIRPORT\UPDATE\UNOS\CAD\GEORGETOWN COUNTY AIRPORT - Existing\ALP - recover\bae.dwg 07/10/2018





**TABLE 3-2. APPROACH AND DEPARTURE STANDARDS TABLE**

#	RUNWAY TYPE	DIMENSIONAL STANDARDS					SLOPE
		A	B	C	D	E	
1	APPROACH END OF RUNWAYS EXPECTED TO SERVE SMALL AIRPLANES WITH APPROACH SPEEDS LESS THAN 50 KNOTS. (VISUAL RUNWAYS ONLY, DAY/NIGHT)	0	120	300	500	2,500	15:1
2	APPROACH END OF RUNWAYS EXPECTED TO SERVE SMALL AIRPLANES WITH APPROACH SPEEDS OF 50 KNOTS. (VISUAL RUNWAYS ONLY, DAY/NIGHT)	0	250	700	2,250	2,750	20:1
3	APPROACH END OF RUNWAYS EXPECTED TO SERVE LARGE AIRPLANES. (VISUAL RUNWAYS ONLY, DAY/NIGHT)	0	400	1,000	1,500	8,500	20:1
4	APPROACH END OF RUNWAYS EXPECTED TO ACCOMMODATE INSTRUMENT APPROACHES HAVING VISIBILITY GREATER THAN OR EQUAL TO 3/4 STATUTE MILE.	200	400	3,400	10,000	0	20:1
5	APPROACH END OF RUNWAYS EXPECTED TO ACCOMMODATE INSTRUMENT APPROACHES HAVING VISIBILITY MINIMUMS LESS THAN 3/4 STATUTE MILE.	0	800	3,400	10,000	0	34:1
6	APPROACH END OF RUNWAYS EXPECTED TO ACCOMMODATE INSTRUMENT APPROACHES WITH VERTICAL GUIDANCE.	0	RUNWAY WIDTH + 200	1,520	10,000	0	30:1
7	DEPARTURE RUNWAY ENDS USED FOR ANY INSTRUMENT OPERATIONS.	0	1,000	6,468	10,200	0	40:1

\* THE LETTERS ARE KEYS TO THOSE SHOWN IN FIGURE 3-2 OF AC 150/5300-13A. SOURCE: FAA ENGINEERING BRIEF #9, DATED SEPTEMBER 20, 2018.

**EXISTING FACILITIES**

BLDG #	NAME	BLDG. HT. (MSL)
1	TERMINAL	70.04
2	BOX HANGAR	78.07
3	SHED	50.06
4	SHED	50.17
5	T-HANGAR	54.87
6	BOX HANGAR	61.13
7	BOX HANGAR	60.58
8	BOX HANGAR	73.78
9	ULTRALIGHT SALES	49.47
10	ULTRALIGHT SALES	57.22
11	T-HANGAR	59.40
12	T-HANGAR	58.83
13	T-HANGAR	59.85
14	PESTICIDE STORAGE	53.55
15	STORAGE	53.70
16	STORAGE	49.59
17	CARPORIT	48.86
18	NON DIRECTIONAL BEACON	REMOVED
19	GARAGE	52.85
20	STORAGE	52.83
21	AUTOMATIC DEPENDENT SURVEILLANCE - BROADCAST (ADS-B)	65.50
22	COUNTY MOSQUITO CONTROL	61.75
23	SHELTER	55.18
24	CORPORATE HANGAR	TBD
25	CORPORATE HANGAR	TBD
26	FUEL FARM	TBD

**FUTURE FACILITIES**

KEY	NAME
F1	T-HANGAR BUILDING
F2	T-HANGAR BUILDING
F3	T-HANGAR BUILDING
F4	T-HANGAR BUILDING
F5	APRON EXPANSION
F6a	LONG TERM AUTO PARKING EXPANSION
F6b	LONG TERM AUTO PARKING EXPANSION
F7	COMMON BOX AND T-HANGAR DEVELOPMENT
F8	COMMON BOX AND T-HANGAR DEVELOPMENT
F9	FBO
F10	COMMON BOX AND T-HANGAR DEVELOPMENT
F11	COMMON BOX AND T-HANGAR DEVELOPMENT
F12	ACCESS ROAD
F13	HANGAR BUILDING
F14	CORPORATE DEVELOPMENT HANGAR
F15	CORPORATE DEVELOPMENT HANGAR
F16	CORPORATE DEVELOPMENT HANGAR
F17	CORPORATE DEVELOPMENT HANGAR
F18	CORPORATE DEVELOPMENT HANGAR
F19	TAXIWAY 'A'
F20	AIRPORT STORAGE MAINTENANCE FACILITY
F21	LAND ACQUISITION PARCELS
F22	LAND ACQUISITION PARCELS
F23	LAND ACQUISITION PARCELS
F24	LAND ACQUISITION PARCELS
F25	LAND ACQUISITION PARCELS
F26	LAND ACQUISITION PARCELS
F27	FUTURE LAND PURCHASE PARCELS

**FAA APPROVAL STAMP**

**CONDITIONALLY APPROVED**

FEDERAL AVIATION ADMINISTRATION  
APPROVAL SUBJECT TO COMMENTS IN APPROVAL LETTER

9/19/19  
DATE

ATLANTA AIRPORTS DISTRICT OFFICE

**GEORGETOWN COUNTY**

10/2/19 DATE  
[Signature] SIGNATURE  
COUNTY ADMINISTRATOR TITLE

**FEDERAL AVIATION ADMINISTRATION**

DATE SIGNATURE TITLE

**LEGEND**

--- AIRPORT PROPERTY LINE	* EXISTING BUILDINGS (ON-AIRPORT) W/ID
--- RUNWAY SAFETY AREA	--- AIRPORT REFERENCE POINT (ARP)
--- BUILDING RESTRICTION LINE (BRL)	--- EXISTING ROADWAYS
--- RUNWAY OBSTACLE FREE ZONE	--- EXISTING BUILDING FACILITIES
--- RUNWAY OBJECT FREE AREA	--- RUNWAY PAVEMENT
--- TAXIWAY OBJECT FREE AREA	--- TAXIWAY PAVEMENT
--- TAXIWAY SAFETY AREA	--- SHOULDERS & APRON PAVEMENT
--- TAXIWAY SAFETY AREA	--- HORIZONTAL CONTROL POINT (PACS/SACS)
--- RUNWAY PROTECTION ZONE	--- FUTURE FACILITY ID
--- PART 77 APPROACH SURFACE	(E) EXISTING / FUTURE
--- THRESHOLD SITING SURFACE (TSS)	(F) FUTURE
--- GLIDE PATH QUAL. SURFACE (GQS)	--- FUTURE LAND ACQUISITION
--- FUTURE LAND ACQUISITION / FUTURE PROPERTY LINE	--- FUTURE BUILDING FACILITY
--- PRECISION OBSTACLE FREE ZONE (POFZ)	--- FUTURE PAVEMENT
--- LIGHTED WIND CONE	--- PAVEMENT TO BE PAINTED OR REMOVED
--- NAVAIDS	--- REMOVED PAVEMENT
--- AIRFIELD LIGHTS	--- BUILDING TO BE REMOVED
--- GROUND CONTOURS	--- TOUCHDOWN ZONE ELEVATION
--- HP HIGH POINT	
--- LP LOW POINT	
--- FENCE LINE	

\* APPROXIMATE FOR REFERENCE ONLY

**ARORA**  
ARORA ENGINEERS, INC.  
1180 West Peachtree Street NW, Suite 1950  
Atlanta, GA 30309  
Tel: 478-231-4660  
Fax: 810-468-1900

**TALBERT & BRIGHT**  
ENGINEERS & ARCHITECTS  
1000 Peachtree Street, NE  
Atlanta, GA 30309  
Tel: 404-525-1100  
Fax: 404-525-1101

PROJECT NAME: **GEORGETOWN COUNTY AIRPORT**  
GEORGETOWN, SOUTH CAROLINA

DRAWING TITLE: **AIRPORT LAYOUT PLAN DRAWING - PROPOSED**

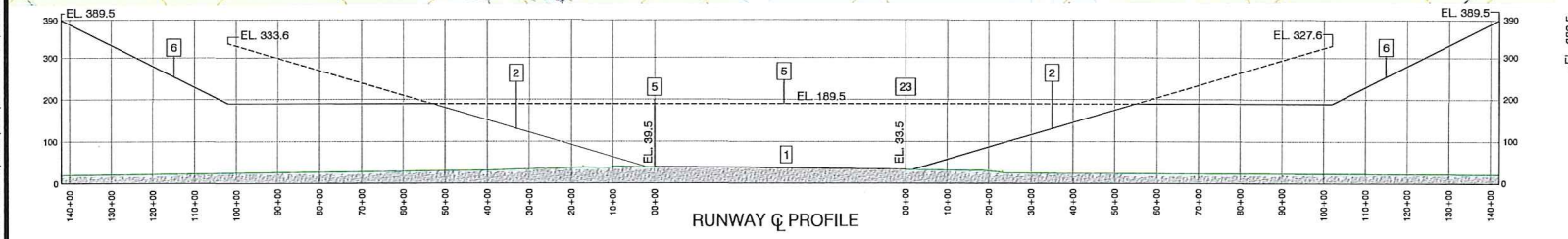
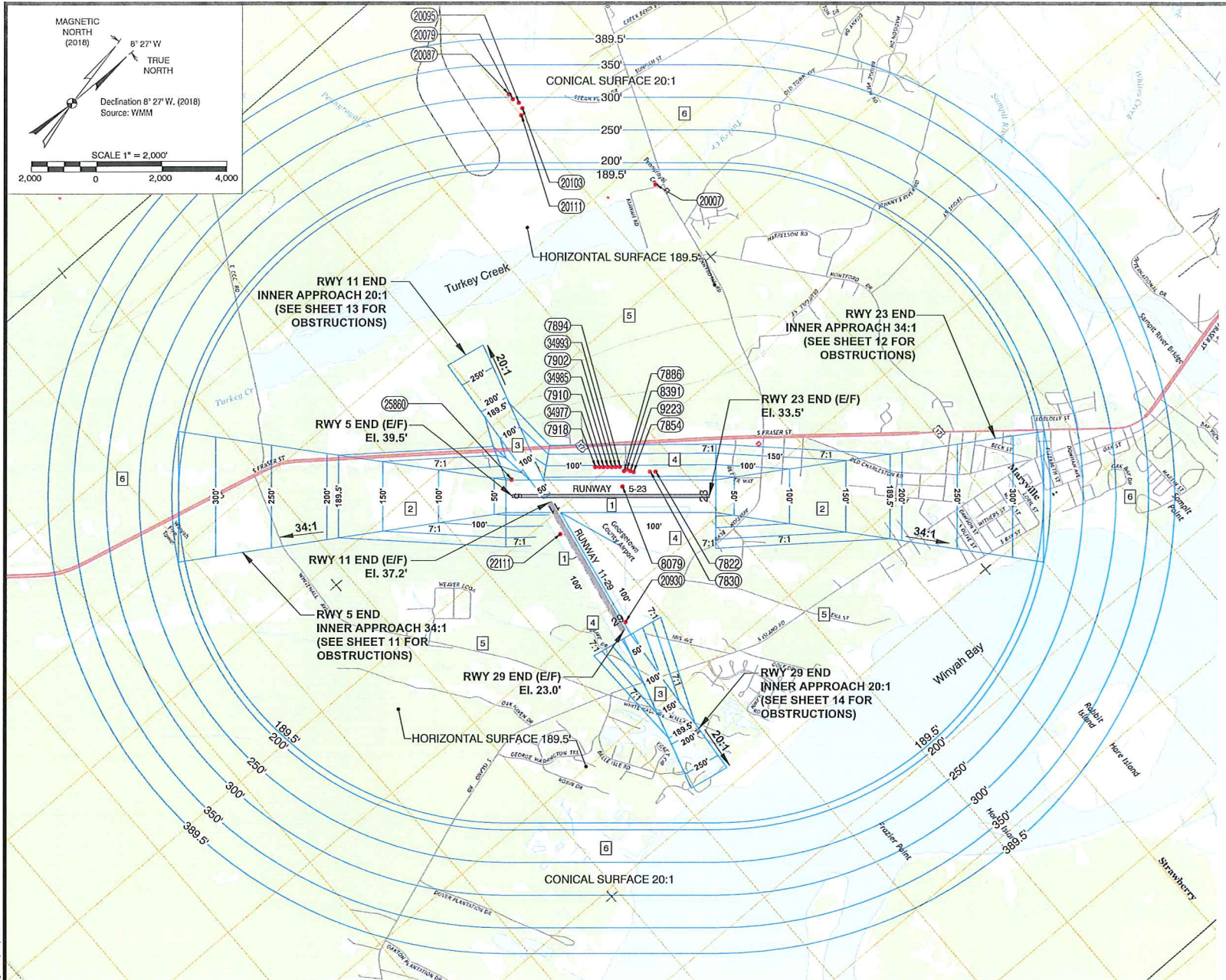
NO.	DATE	REVISION

PROJECT NO.	DRAWN BY	CHECKED BY	SCALE	DATE	DRAWING NO.
2601 - 1601	WA	MS	AS SHOWN	SEP 2018	4

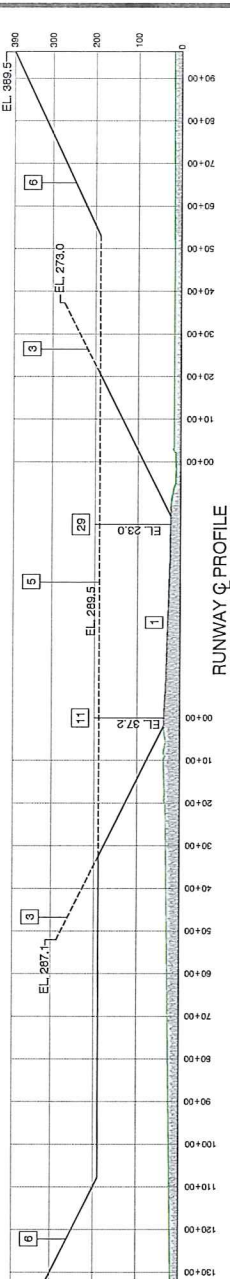
M:\2601 (Georgetown)\1601 ALP Update\WORKING FILES\GSE-ALP-Proposed ALP - Standard\GSE-ALP-Proposed ALP - Standard.dwg 11/19/2018

**NOTE:**  
DRAWING DEPICTS EXISTING RUNWAY DESIGN CODE CONFORMANCE WITH STANDARDS SET FORTH IN AC 150/5300-13A (9/28/2018) TABLE 3-5, AS OF THE DATE OF ALP APPROVAL FOR AIR FUNDED CAPITAL PROJECTS. THE PROJECT SCOPE WILL BE LIMITED TO AIRCRAFT DESIGN GROUP III FOR RUNWAYS 5-23 AND A/B4 FOR RUNWAY 11-29 UNLESS OTHERWISE JUSTIFIED AND/OR APPROVED BY FAA.





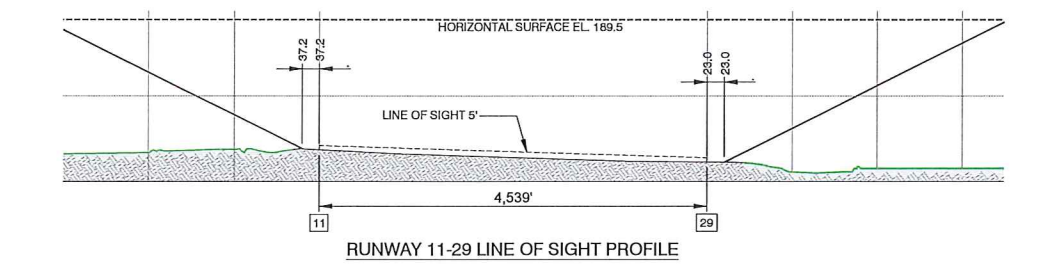
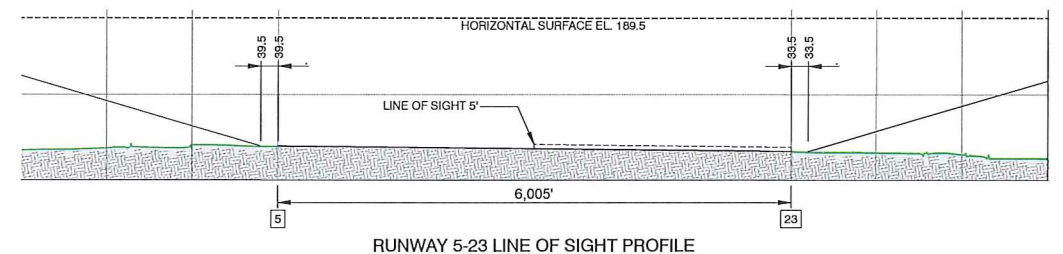
- FAR PART 77 SURFACES**
- 1 PRIMARY SURFACE  
RUNWAY 5-23 6405x1000'  
RUNWAY 11-29 4939x250'  
SAME ELEVATION AS RUNWAY
  - 2 APPROACH SURFACE  
1000x4000x10000'  
34:1 APPROACH SLOPE
  - 3 APPROACH SURFACE  
250x1250x5000'  
20:1 APPROACH SLOPE
  - 4 7:1 TRANSITIONAL SURFACE
  - 5 HORIZONTAL SURFACE 15'  
ABOVE ESTABLISHED ELEVATION
  - 6 20:1 CONICAL SURFACE



OBSTRUCTIONS								
POINT ID	DESCRIPTION	APPLICABLE SURFACE	OBSTRUCTION ELEVATION (MSL)	GROUND ELEVATION (MSL)	ABOVE GROUND HEIGHT	SURFACE HEIGHT (MSL)	PENETRATION	PROPOSED DISPOSITION
7822	HANGAR	TRANSITIONAL	71.564	37.855	33.709	71.235	0	LIGHT/MARK (TBD)
7830	HANGAR	TRANSITIONAL	77.119	36.467	40.652	71.461	6	LIGHT/MARK (TBD)
7854	HANGAR	TRANSITIONAL	77.119	38.234	38.885	70.224	7	LIGHT/MARK (TBD)
7886	LIGHT POLE	TRANSITIONAL	94.778	38.597	56.181	75.101	20	LIGHT/MARK (TBD)
7894	LIGHT POLE	TRANSITIONAL	94.651	39.606	55.045	93.156	1	LIGHT/MARK (TBD)
7902	LIGHT POLE	TRANSITIONAL	94.651	39.479	55.172	92.838	2	LIGHT/MARK (TBD)
7910	LIGHT POLE	TRANSITIONAL	94.525	38.091	56.434	93.103	1	LIGHT/MARK (TBD)
7918	LIGHT POLE	TRANSITIONAL	93.768	38.092	55.676	93.131	1	LIGHT/MARK (TBD)
8079	WINDSOCK	PRIMARY	55.395	20.2	35.195	36.144	19	LIGHT/MARK (TBD)
8391	ANTENNA	TRANSITIONAL	84.685	70.418	14.267	81.654	3	LIGHT/MARK (TBD)
9223	LIGHT POLE	TRANSITIONAL	95.409	38.47	56.939	75.073	20	LIGHT/MARK (TBD)
20007	COMMUNICATION TOWER	HORIZONTAL	206.266	20.173	186.093	189.5	17	LIGHT/MARK (TBD)
20079	CHIMNEY/SMOKESTACK	CONICAL	432.344	28.849	403.495	297.297	135	LIGHT/MARK (TBD)
20087	CHIMNEY/SMOKESTACK	CONICAL	432.849	28.975	403.874	304.794	128	LIGHT/MARK (TBD)
20095	CHIMNEY/SMOKESTACK	CONICAL	430.173	28.572	401.601	291.773	138	LIGHT/MARK (TBD)
20103	CHIMNEY/SMOKESTACK	CONICAL	430.173	27.183	402.99	283.579	147	LIGHT/MARK (TBD)
20111	CHIMNEY/SMOKESTACK	CONICAL	431.94	28.066	403.874	272.623	159	LIGHT/MARK (TBD)
20930	WINDSOCK	TRANSITIONAL	35.202	21.567	13.635	30.729	4	LIGHT/MARK (TBD)
22111	VEHICLE	TRANSITIONAL	50.049	29.722	20.327	45.045	5	LIGHT/MARK (TBD)
25860	POLE	TRANSITIONAL	48.174	37.569	10.605	40.88	7	LIGHT/MARK (TBD)
34977	UTILITY POLE	TRANSITIONAL	93.88	38.33	55.55	93.152	1	LIGHT/MARK (TBD)
34985	UTILITY POLE	TRANSITIONAL	93.88	39.087	54.793	93.195	1	LIGHT/MARK (TBD)
34993	UTILITY POLE	TRANSITIONAL	93.88	39.845	54.035	93.059	1	LIGHT/MARK (TBD)
7894	LIGHT POLE	TRANSITIONAL	94.651	39.606	55.045	93.156	1	LIGHT/MARK (TBD)
7902	LIGHT POLE	TRANSITIONAL	94.651	39.479	55.172	92.838	2	LIGHT/MARK (TBD)
7886	LIGHT POLE	TRANSITIONAL	94.778	38.597	56.181	75.101	20	LIGHT/MARK (TBD)
7854	HANGAR	TRANSITIONAL	77.119	38.234	38.885	70.224	7	LIGHT/MARK (TBD)
7822	HANGAR	TRANSITIONAL	71.564	37.855	33.709	71.235	0	LIGHT/MARK (TBD)
7830	HANGAR	TRANSITIONAL	77.119	36.467	40.652	71.461	6	LIGHT/MARK (TBD)

**SOURCE:**  
 OBSTRUCTION DATA FROM 2017 AGIS DATA BY QUANTUM SPATIAL Inc https://store.usgs.gov/  
 UDDF file named 2018\_GGE\_VGA\_6326.SPC.txt from https://hfdca.faa.gov/hfdcaApps/services/publicData/uddfList.jsp

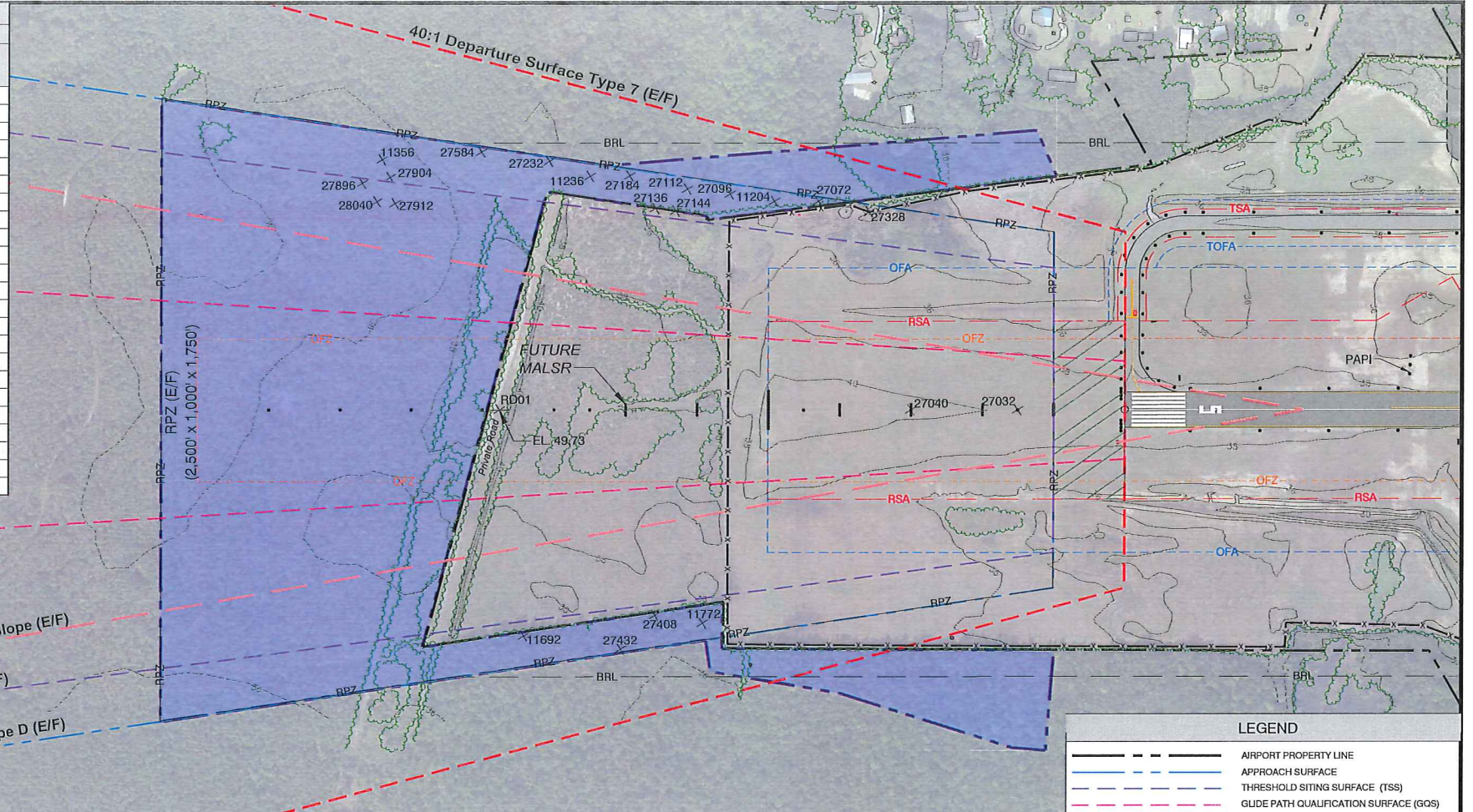
- NOTES:**
- EXISTING ZONING DESIGNATIONS ARE AS OF JANUARY 4, 2018, AS PER GEORGETOWN COUNTY AND CITY OF GEORGETOWN WEBSITES, AND IS SUBJECT TO CHANGE. ZONING DESIGNATION LABELS ARE APPROXIMATE IN DESCRIPTION AND LOCATION AND ARE INTENDED FOR AIRPORT LAND USE COMPATIBILITY REFERENCE PURPOSES ONLY.
  - PUBLIC FACILITIES SUCH AS SCHOOLS, HOSPITALS, PLACES OF WORSHIP, ETC. ARE ONLY DEPICTED FOR SELECTED ONES THAT MAY HAVE AIRPORT LAND USE COMPATIBILITY CONCERNS, AS OF JANUARY 4, 2018. LOCATIONS AND CONFIGURATIONS OF SUCH FACILITIES ARE SUBJECT TO CHANGE.
  - MUNICIPAL BOUNDARIES ARE AS OF SEPTEMBER 29, 2017 AND MAY HAVE BEEN CHANGED SINCE, DUE TO ANNEXATIONS AND/OR DEANNEXATIONS.
  - GEORGETOWN COUNTY PROTECTS FOR AIRPORT AND AIRSPACE HAZARDS THROUGH COUNTY AIRPORT SAFETY OVERLAY ZONE (GEORGETOWN COUNTY ZONING ORDINANCE, ARTICLES XIX, SECTION 1900 and ARTICLE XX, SECTION 2001).
  - LINE OF SIGHT STANDARDS ALONG INDIVIDUAL RUNWAYS:
    - RUNWAYS WITHOUT FULL PARALLEL TAXIWAYS. ANY POINT 5 FEET ABOVE THE RUNWAY CENTERLINE MUST BE MUTUALLY VISIBLE WITH ANY OTHER POINT 5 FEET ABOVE THE RUNWAY CENTERLINE.
    - RUNWAYS WITH A FULL PARALLEL TAXIWAY. ANY POINT 5 FEET ABOVE THE RUNWAY CENTERLINE MUST BE MUTUALLY VISIBLE WITH ANY OTHER POINT 5 FEET ABOVE THE RUNWAY CENTERLINE THAT IS LOCATED AT A DISTANCE THAT IS LESS THAN ONE HALF OF THE LENGTH OF THE RUNWAY.



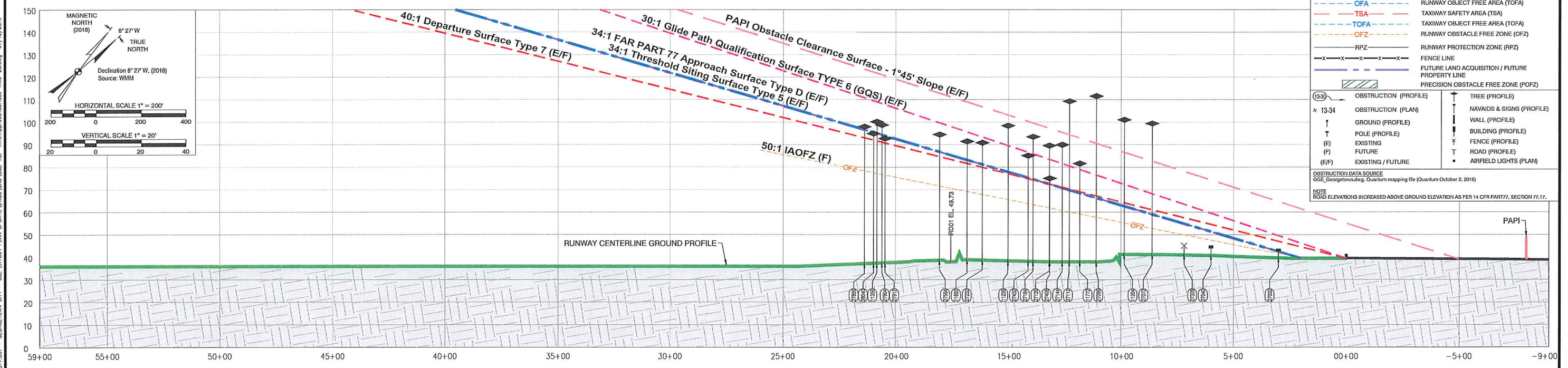
 Arora Engineers, Inc. 1180 West Piedmont Street NW Suite 1500 Atlanta, GA 30309 Tel: 478-231-6500 Fax: 478-458-7900		 Talbert & Bright EN ENGINEERING & PLANNING CONSULTANTS 1000 Peachtree Street NE Suite 1000 Atlanta, GA 30309 Tel: 404-251-6500 Fax: 404-251-6500		PROJECT NAME: GEORGETOWN COUNTY AIRPORT GEORGETOWN, SOUTH CAROLINA DRAWING TITLE: AIRPORT AIRSPACE DRAWING	
PROJECT NO: 2601 - 1601 DRAWN BY: WA CHECKED BY: MS SCALE: AS SHOWN DATE: SEP 2018 DRAWING NO: 5		No. DATE REVISION			



RUNWAY 5 END OBSTRUCTIONS							
POINT ID	DESCRIPTION	OBSTRUCTION ELEVATION (MSL)	PART 77 SURFACE HEIGHT	PART 77 PENETRATION	THRESHOLD SITING SURFACE HEIGHT	THRESHOLD SITING PENETRATION	PROPOSED DISPOSITION
27032	NAVAID	43.678	42.421	1	42.421	1	N/A - FIXED BY FUNCTION
27040	NAVAID	45.193	51.235	-6	51.235	-6	N/A - FIXED BY FUNCTION
27136	TREE	90.751	72.332	18	N/A	N/A	CLEAR - SCHEDULE TBD
27144	TREE	91.129	70.658	20	N/A	N/A	CLEAR - SCHEDULE TBD
27328	FENCE	45.109	54.738	-10	N/A	N/A	N/A
27896	TREE	99.153	96.461	3	96.461	3	REMOVE (PRIORITY) - SHORT TERM
28040	TREE	96.11	95.264	1	95.264	1	REMOVE (PRIORITY) - SHORT TERM
11356	TREE	101.343	94.831	7	N/A	N/A	CLEAR - SCHEDULE TBD
27904	TREE	99.911	94.165	6	N/A	N/A	CLEAR - SCHEDULE TBD
27912	TREE	93.906	93.747	0	93.747	0	CLEAR - SCHEDULE TBD
27584	TREE	95.657	86.628	9	N/A	N/A	CLEAR - SCHEDULE TBD
27232	TREE	92.013	81.059	11	N/A	N/A	CLEAR - SCHEDULE TBD
11236	TREE	99.576	77.713	22	N/A	N/A	CLEAR - SCHEDULE TBD
27184	TREE	94.664	74.466	20	N/A	N/A	CLEAR - SCHEDULE TBD
27112	TREE	110.446	69.713	41	N/A	N/A	CLEAR - SCHEDULE TBD
27096	TREE	112.718	66.189	47	N/A	N/A	CLEAR - SCHEDULE TBD
11204	TREE	102.227	62.538	40	N/A	N/A	CLEAR - SCHEDULE TBD
27072	TREE	100.598	58.899	42	N/A	N/A	CLEAR - SCHEDULE TBD
11692	TREE	92.627	83.067	10	N/A	N/A	CLEAR - SCHEDULE TBD
27432	TREE	86.295	75.128	11	N/A	N/A	CLEAR - SCHEDULE TBD
27408	TREE	76.209	72.301	4	N/A	N/A	CLEAR - SCHEDULE TBD
11772	TREE	82.779	68.374	14	N/A	N/A	CLEAR - SCHEDULE TBD
RD01	ROAD (Private Rd.)	49.73	85.293	-35.56	85.293	-35.56	N/A



RUNWAY 5 END - PLAN VIEW



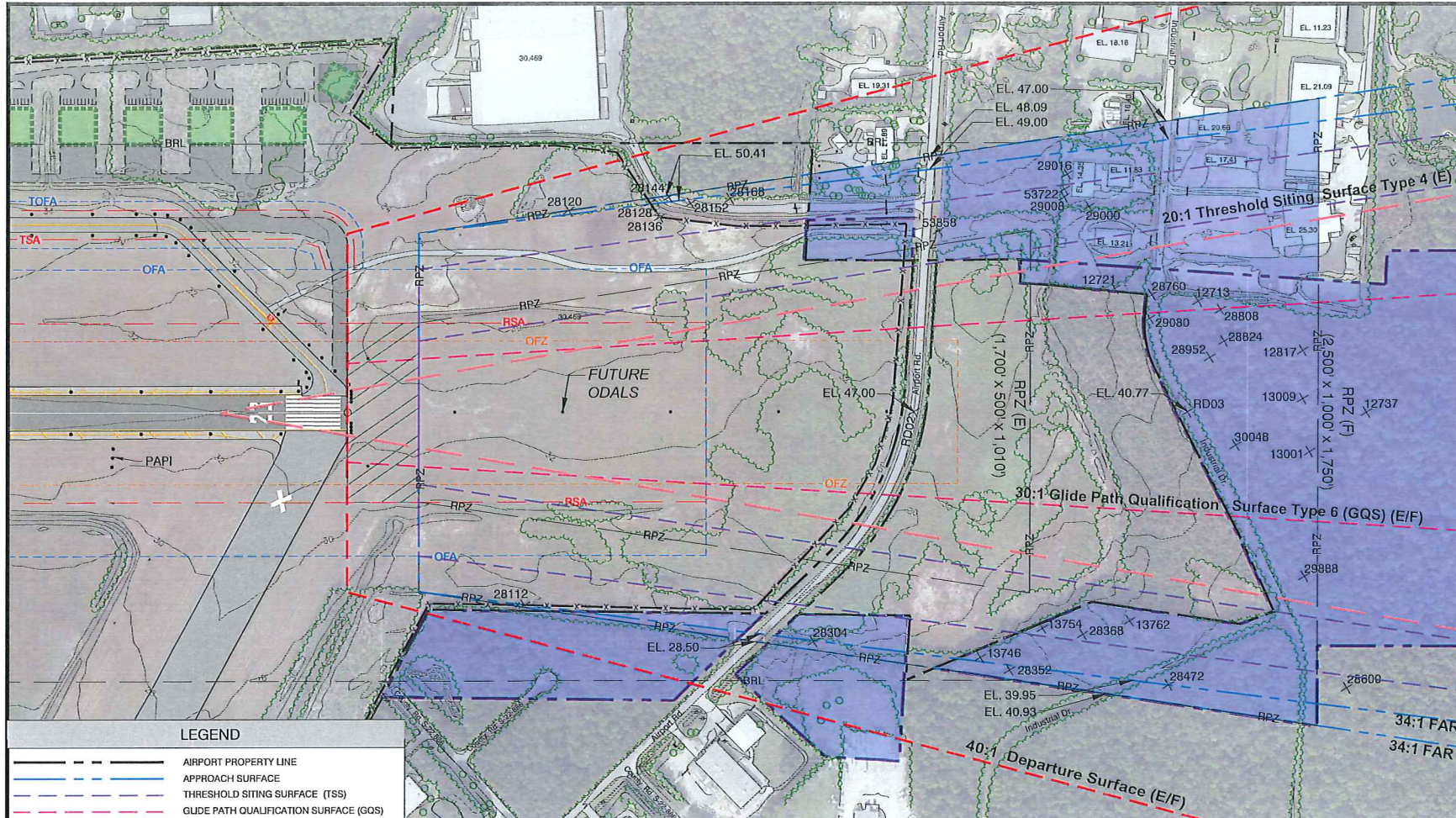
RUNWAY 5 END - PROFILE VIEW

LEGEND	
	AIRPORT PROPERTY LINE
	APPROACH SURFACE
	THRESHOLD SITING SURFACE (TSS)
	GLIDE PATH QUALIFICATION SURFACE (GQS)
	PAPI OBSTACLE CLEARANCE SURFACE (OCS)
	DEPARTURE SURFACE
	BUILDING RESTRICTION LINE (BRL)
	RUNWAY SAFETY AREA (RSA)
	RUNWAY OBJECT FREE AREA (TOFA)
	TAXIWAY SAFETY AREA (TSA)
	TAXIWAY OBJECT FREE AREA (TOFA)
	RUNWAY OBSTACLE FREE ZONE (OFZ)
	RUNWAY PROTECTION ZONE (RPZ)
	FENCE LINE
	FUTURE LAND ACQUISITION / FUTURE PROPERTY LINE
	PRECISION OBSTACLE FREE ZONE (POFZ)
	OBSTRUCTION (PROFILE)
	OBSTRUCTION (PLAN)
	GROUND (PROFILE)
	POLE (PROFILE)
	EXISTING (F)
	EXISTING / FUTURE (E/F)
	TREE (PROFILE)
	NAVAIDS & SIGNS (PROFILE)
	WALL (PROFILE)
	BUILDING (PROFILE)
	FENCE (PROFILE)
	ROAD (PROFILE)
	AIRFIELD LIGHTS (PLAN)

C:\Users\veltona\Desktop\GCE\33517.001 - GEORGETOWN CITY - GCE LAYOUT PLAN UPDATE\UNOS\GCE-ALP-InnerApproachSurface-RWS-23.dwg 07/10/2019

<p>Arora Engineers, Inc. 1150 West Peachtree Street NW Suite 1950 Atlanta, GA 30309 Tel: 404-231-4000 Fax: 404-459-7900</p>		<p>TALBERT &amp; BRIGHT ENGINEERS &amp; TRANSPORTATION PLANNERS 1000 CENTRAL AVENUE SUITE 1000 ATLANTA, GEORGIA 30309</p>		<p>PROJECT NAME: GEORGETOWN COUNTY AIRPORT GEORGETOWN, SOUTH CAROLINA</p> <p>DRAWING TITLE: INNER PORTION OF THE APPROACH SURFACE DRAWING - RUNWAY 5</p> <p>PROJECT NO: 2601 - 1601    DRAWN BY: WA    CHECKED BY: MS    SCALE: AS SHOWN    DATE: SEP 2018    DRAWING NO: 6</p>													
<table border="1"> <thead> <tr> <th>No.</th> <th>DATE</th> <th>REVISION</th> </tr> </thead> <tbody> <tr><td> </td><td> </td><td> </td></tr> <tr><td> </td><td> </td><td> </td></tr> <tr><td> </td><td> </td><td> </td></tr> </tbody> </table>		No.	DATE	REVISION													
No.	DATE	REVISION															





RUNWAY 23 END OBSTRUCTIONS							
POINT ID	DESCRIPTION	OBSTRUCTION ELEVATION (MSL)	PART 77 SURFACE HEIGHT	PART 77 PENETRATION	THRESHOLD SITING SURFACE HEIGHT	THRESHOLD SITING PENETRATION	PROPOSED DISPOSITION
28112	FENCE	33.251	42.188	-9	N/A	N/A	N/A
28128	FENCE	44.191	52.448	-8	N/A	N/A	N/A
28136	FENCE	43.965	53.225	-9	N/A	N/A	N/A
28144	SECONDARY ROAD	46.208	53.976	-8	N/A	N/A	N/A
28152	SECONDARY ROAD	46.334	55.799	-9	N/A	N/A	N/A
53858	UTILITY POLE	66.397	76.029	-10	N/A	N/A	N/A
12713	TREE	113.037	97.249	16	97.249 (FUTURE)	16 (FUTURE)	REMOVE WITH ODALS RELOCATION
12721	TREE	98.392	90.44	8	90.44 (FUTURE)	8 (FUTURE)	REMOVE WITH ODALS RELOCATION
12737	TREE	119.35	111.041	8	111.041 (FUTURE)	8 (FUTURE)	REMOVE WITH ODALS RELOCATION
12817	TREE	118.087	105.793	12	105.793 (FUTURE)	12 (FUTURE)	REMOVE WITH ODALS RELOCATION
13001	TREE	114.805	106.36	8	106.36 (FUTURE)	8 (FUTURE)	REMOVE WITH ODALS RELOCATION
13009	TREE	115.436	105.794	10	105.794 (FUTURE)	10 (FUTURE)	REMOVE WITH ODALS RELOCATION
13746	TREE	106.56	79.499	27	N/A	N/A	CLEAR - SCHEDULE TBD
13754	TREE	99.743	84.611	15	84.611 (FUTURE)	15 (FUTURE)	REMOVE WITH ODALS RELOCATION
13762	TREE	116.029	91.712	24	91.712 (FUTURE)	24 (FUTURE)	REMOVE WITH ODALS RELOCATION
28120	BUSH	41.493	45.799	-4	N/A	N/A	N/A
28168	TREE	63.864	59.016	5	N/A	N/A	CLEAR - SCHEDULE TBD
28304	TREE	65.907	65.816	0	N/A	N/A	CLEAR - SCHEDULE TBD
28352	TREE	104.643	81.907	23	N/A	N/A	CLEAR - SCHEDULE TBD
28368	TREE	111.639	87.906	24	87.906 (FUTURE)	24 (FUTURE)	REMOVE WITH ODALS RELOCATION
28472	TREE	111.599	94.896	17	N/A	N/A	CLEAR - SCHEDULE TBD
28600	TREE	113.338	109.485	4	N/A	N/A	CLEAR - SCHEDULE TBD
28760	TREE	93.687	93.459	0	N/A	N/A	CLEAR - SCHEDULE TBD
28808	TREE	114.31	99.052	15	N/A	N/A	CLEAR - SCHEDULE TBD
28824	TREE	113.074	99.348	14	99.348 (FUTURE)	14 (FUTURE)	REMOVE WITH ODALS RELOCATION
28952	TREE	109.707	98.196	12	98.196 (FUTURE)	12 (FUTURE)	REMOVE WITH ODALS RELOCATION
29000	TREE	89.603	88.325	1	88.325 (FUTURE)	1 (FUTURE)	REMOVE WITH ODALS RELOCATION
29008	TREE	92.174	86.307	6	86.307 (FUTURE)	6 (FUTURE)	REMOVE WITH ODALS RELOCATION
29016	TREE	95.456	86.55	9	N/A	N/A	CLEAR - SCHEDULE TBD
29080	TREE	98.286	93.279	5	N/A	N/A	CLEAR - SCHEDULE TBD
29888	TREE	109.005	105.971	3	105.971 (FUTURE)	3 (FUTURE)	REMOVE WITH ODALS RELOCATION
30048	TREE	105.893	100.33	6	100.33 (FUTURE)	6 (FUTURE)	REMOVE WITH ODALS RELOCATION
53722	TREE	87.89	86.314	2	86.314 (FUTURE)	2 (FUTURE)	REMOVE WITH ODALS RELOCATION
RD02	ROAD (Airport Rd.)	47	73.96	-26.96	N/A	N/A	N/A
RD03	ROAD (Industrial Rd.)	40.77	73.96	-33.19	N/A	N/A	N/A

**LEGEND**

- AIRPORT PROPERTY LINE
- APPROACH SURFACE
- THRESHOLD SITING SURFACE (TSS)
- GLIDE PATH QUALIFICATION SURFACE (GQS)
- PAPI OBSTACLE CLEARANCE SURFACE (OCS)
- DEPARTURE SURFACE
- BRL BUILDING RESTRICTION LINE (BRL)
- RSA RUNWAY SAFETY AREA (RSA)
- OFA RUNWAY OBJECT FREE AREA (TOFA)
- TSA TAXIWAY SAFETY AREA (TSA)
- TOFA TAXIWAY OBJECT FREE AREA (TOFA)
- OFZ RUNWAY OBSTACLE FREE ZONE (OFZ)
- RPZ RUNWAY PROTECTION ZONE (RPZ)
- FENCE LINE
- FUTURE LAND ACQUISITION / FUTURE PROPERTY LINE
- POFZ PRECISION OBSTACLE FREE ZONE (POFZ)
- FUTURE BUILDING FACILITIES
- FUTURE PAVEMENT

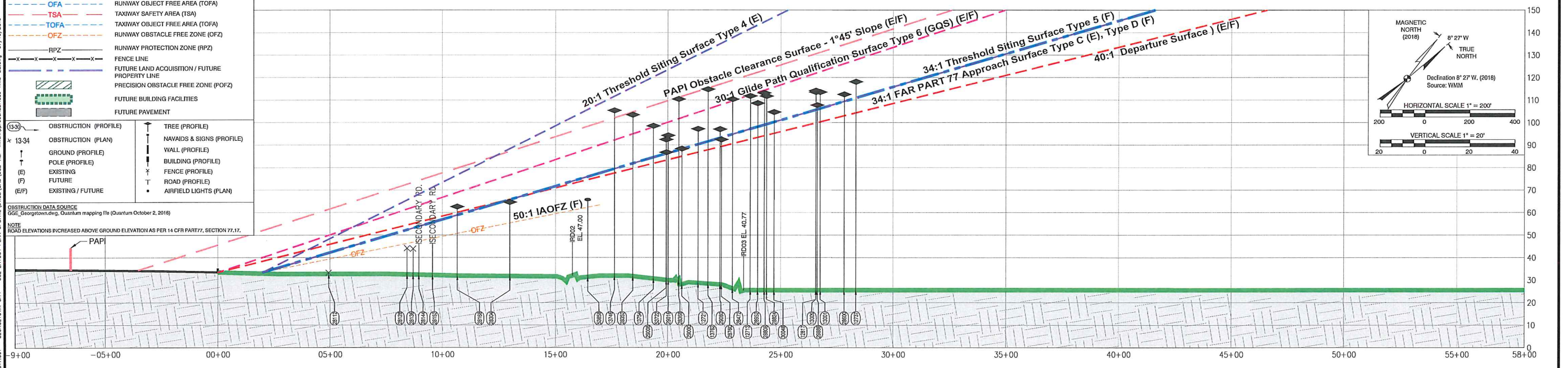
**OBSTRUCTION DATA SOURCE**  
GGE, Georgetown, deg. Quantum mapping file (Quantum October 2, 2016)

**NOTE**  
ROAD ELEVATIONS INCREASED ABOVE GROUND ELEVATION AS PER 14 CFR PART 77, SECTION 77.17.

**OBSTRUCTION (PROFILE)**  
x 13-34 OBSTRUCTION (PLAN)  
↑ GROUND (PROFILE)  
↑ POLE (PROFILE)  
↑ EXISTING (E)  
↑ FUTURE (F)  
↑ EXISTING / FUTURE (E/F)

**TREE (PROFILE)**  
↑ NAVAIDS & SIGNS (PROFILE)  
↑ WALL (PROFILE)  
↑ BUILDING (PROFILE)  
↑ FENCE (PROFILE)  
↑ ROAD (PROFILE)  
↑ AIRFIELD LIGHTS (PLAN)

RUNWAY 23 END - PLAN VIEW



RUNWAY 23 END - PROFILE VIEW

MAGNETIC NORTH (2018) 8° 27' W  
TRUE NORTH  
Declination 8° 27' W, (2018)  
Source: WMM

HORIZONTAL SCALE 1" = 200'

VERTICAL SCALE 1" = 20'

C:\Users\welsona\Desktop\GCE\35317.001 - GCE LAYOUT PLAN UPDATE\DWG\GCE-ALP-InnerApproachSurface-RWS-23.dwg 07/10/2018

PROJECT NAME		GEORGETOWN COUNTY AIRPORT GEORGETOWN, SOUTH CAROLINA				
DRAWING TITLE		INNER PORTION OF THE APPROACH SURFACE DRAWING - RUNWAY 23				
PROJECT NO	DRAWN BY	CHECKED BY	SCALE	DATE	DRAWING NO	
2601 - 1601	WA	MS	AS SHOWN	SEP 2018	7	

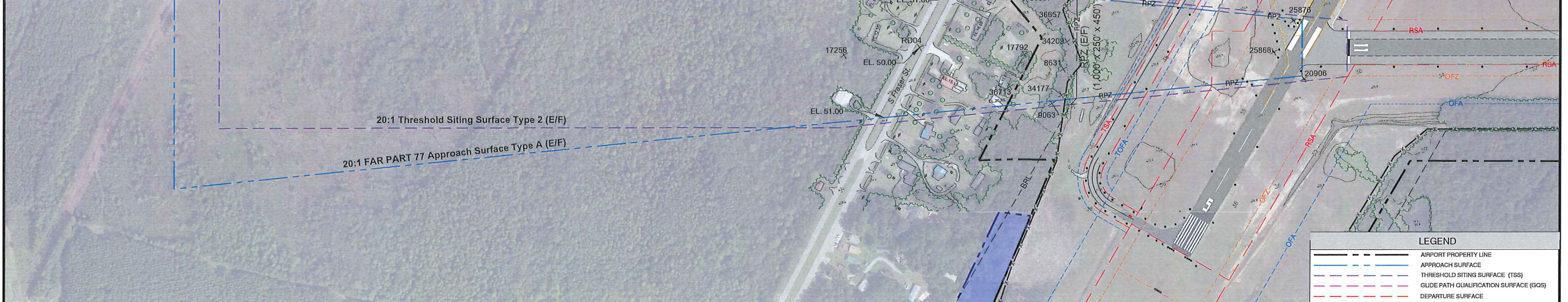
**ARORA**  
Arora Engineers, Inc.  
1180 West Peachtree Street NW,  
Suite 1050  
Atlanta, GA 30309  
Tel: 478-231-4500  
Fax: 478-458-7500

**TALBERT & BRIGHT**  
ENGINEERS & PLANNERS  
1400 W. BROAD ST., SUITE 200  
ATLANTA, GA 30334  
TEL: 404-525-1100

No.	DATE	REVISION

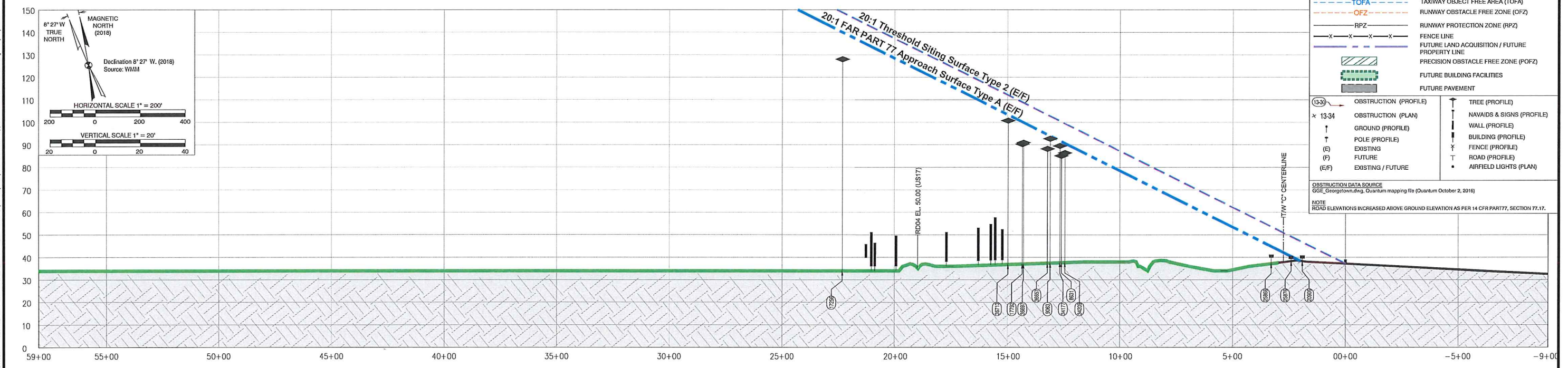


RUNWAY 11 END OBSTRUCTIONS							
POINT ID	DESCRIPTION	OBSTRUCTION ELEVATION (MSL)	PART 77 SURFACE HEIGHT	PART 77 PENETRATION	THRESHOLD SITING SURFACE HEIGHT	THRESHOLD SITING PENETRATION	PROPOSED DISPOSITION
25868	SIGN	41.112	43.481	-2	N/A	N/A	N/A - FIXED BY FUNCTION
25876	SIGN	40.582	39.041	2	N/A	N/A	N/A - FIXED BY FUNCTION
20906	SIGN	40.757	N/A	N/A	N/A	N/A	N/A - FIXED BY FUNCTION
17256	TREE	129.218	138.697	-9	N/A	N/A	N/A
36713	TREE	101.909	102.007	0	N/A	N/A	N/A
17792	TREE	91.47	98.853	-7	N/A	N/A	N/A
36697	TREE	92.132	98.574	-6	N/A	N/A	N/A
36657	TREE	89.393	93.229	-4	N/A	N/A	N/A
34177	TREE	90.709	90.489	0	N/A	N/A	CLEAR - SCHEDULE TBD
8631	TREE	94.317	90.162	4	N/A	N/A	CLEAR - SCHEDULE TBD
34209	TREE	87.552	89.364	-2	N/A	N/A	N/A
9063	TREE	93.877	N/A	N/A	N/A	N/A	N/A
RD04	ROAD (S Fraser St)	50	76.33	-26.33	N/A	N/A	N/A



RUNWAY 11 END - PLAN VIEW

LEGEND	
	AIRPORT PROPERTY LINE
	APPROACH SURFACE
	THRESHOLD SITING SURFACE (TSS)
	GUIDE PATH QUALIFICATION SURFACE (GQS)
	DEPARTURE SURFACE
	BUILDING RESTRICTION LINE (BRL)
	RUNWAY SAFETY AREA (RSA)
	RUNWAY OBJECT FREE AREA (TOFA)
	TAXIWAY SAFETY AREA (TSA)
	TAXIWAY OBJECT FREE AREA (TOFA)
	RUNWAY OBSTACLE FREE ZONE (OFZ)
	RUNWAY PROTECTION ZONE (RPZ)
	FENCE LINE
	FUTURE LAND ACQUISITION / FUTURE PROPERTY LINE
	PRECISION OBSTACLE FREE ZONE (POFZ)
	FUTURE BUILDING FACILITIES
	FUTURE PAVEMENT
	OBSTRUCTION (PROFILE)
	OBSTRUCTION (PLAN)
	GROUND (PROFILE)
	POLE (PROFILE)
	EXISTING
	FUTURE
	EXISTING / FUTURE
	TREE (PROFILE)
	NAVAIDS & SIGNS (PROFILE)
	WALL (PROFILE)
	BUILDING (PROFILE)
	FENCE (PROFILE)
	ROAD (PROFILE)
	AIRFIELD LIGHTS (PLAN)

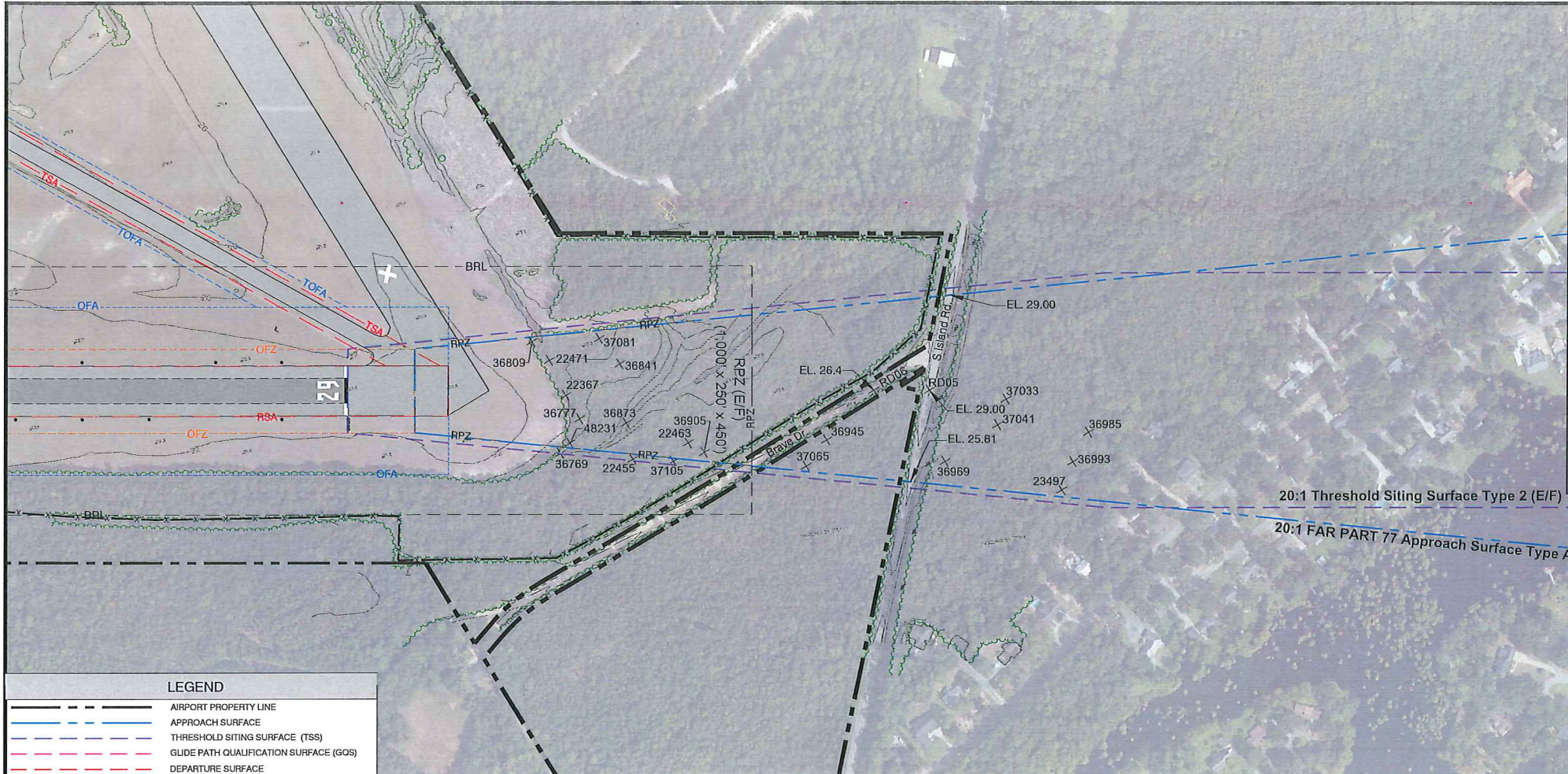


RUNWAY 11 END - PROFILE VIEW

C:\Users\velton\Desktop\GEORGETOWN COUNTY - GCE LAYOUT PLAN UPDATE\DWG\CAD\GCE-AUP-InterApproachSurface-TW11-28.dwg 07/10/2019

 Arora Engineers, Inc. 1180 West Peachtree Street NW, Suite 1950 Atlanta, GA 30309 Tel: 404-231-4090 Fax: 404-458-7950		 Talbert & Bright ENGINEERS & PLANNERS 1100 Peachtree Street NW Suite 1950 Atlanta, GA 30309 Tel: 404-231-4090 Fax: 404-458-7950		PROJECT NAME <b>GEORGETOWN COUNTY AIRPORT</b> GEORGETOWN, SOUTH CAROLINA DRAWING TITLE <b>INNER PORTION OF THE APPROACH</b> <b>SURFACE DRAWING - RUNWAY 11</b>	
PROJECT NO.	DRAWN BY	CHECKED BY	SCALE	DATE	DRAWING NO.
2601-1601	WA	MS	AS SHOWN	SEP 2018	8





RUNWAY 29 END OBSTRUCTIONS							
POINT ID	DESCRIPTION	OBSTRUCTION ELEVATION (MSL)	PART 77 SURFACE HEIGHT	PART 77 PENETRATION	THRESHOLD SITING SURFACE HEIGHT	THRESHOLD SITING PENETRATION	PROPOSED DISPOSITION
36777	TREE	53.312	47.376	6	N/A	N/A	CLEAR - SCHEDULE TBD
36809	TREE	45.635	40.311	5	N/A	N/A	CLEAR - SCHEDULE TBD
22471	TREE	49.384	42.853	7	N/A	N/A	CLEAR - SCHEDULE TBD
22367	TREE	49.889	45.27	5	N/A	N/A	CLEAR - SCHEDULE TBD
48231	TREE	51.42	45.922	5	N/A	N/A	CLEAR - SCHEDULE TBD
37081	TREE	43.769	50.199	-6	N/A	N/A	N/A
36941	TREE	45.132	53.29	-8	N/A	N/A	N/A
36873	TREE	47.183	54.237	-7	N/A	N/A	N/A
22463	TREE	68.322	63.471	5	N/A	N/A	CLEAR - SCHEDULE TBD
36905	TREE	68.611	65.692	3	N/A	N/A	CLEAR - SCHEDULE TBD
37065	TREE	72.704	81.133	-8	N/A	N/A	N/A
36945	TREE	78.621	84.146	-6	N/A	N/A	N/A
36969	TREE	96.938	101.663	-5	N/A	N/A	N/A
37041	TREE	102.587	109.413	-7	N/A	N/A	N/A
37033	TREE	106.041	110.668	-5	N/A	N/A	N/A
23497	TREE	121.828	118.992	3	N/A	N/A	CLEAR - SCHEDULE TBD
36993	TREE	121.411	120.622	1	N/A	N/A	CLEAR - SCHEDULE TBD
36985	TREE	115.045	122.96	-8	N/A	N/A	N/A
36769	TREE	65.57	44.491	1	54.491	11	REMOVE (PRIORITY) - SHORT TERM
22455	TREE	74.76	55.254	0	65.254	10	REMOVE (PRIORITY) - SHORT TERM
37105	TREE	68.156	63.111	5	71.266	-3	CLEAR - SCHEDULE TBD
RD05	ROAD (S Island Rd.)	29	84.85	-55.85	N/A	N/A	N/A
RD06	ROAD (Brave Dr.)	26.4	68.14	-41.74	N/A	N/A	N/A

RUNWAY 29 END - PLAN VIEW

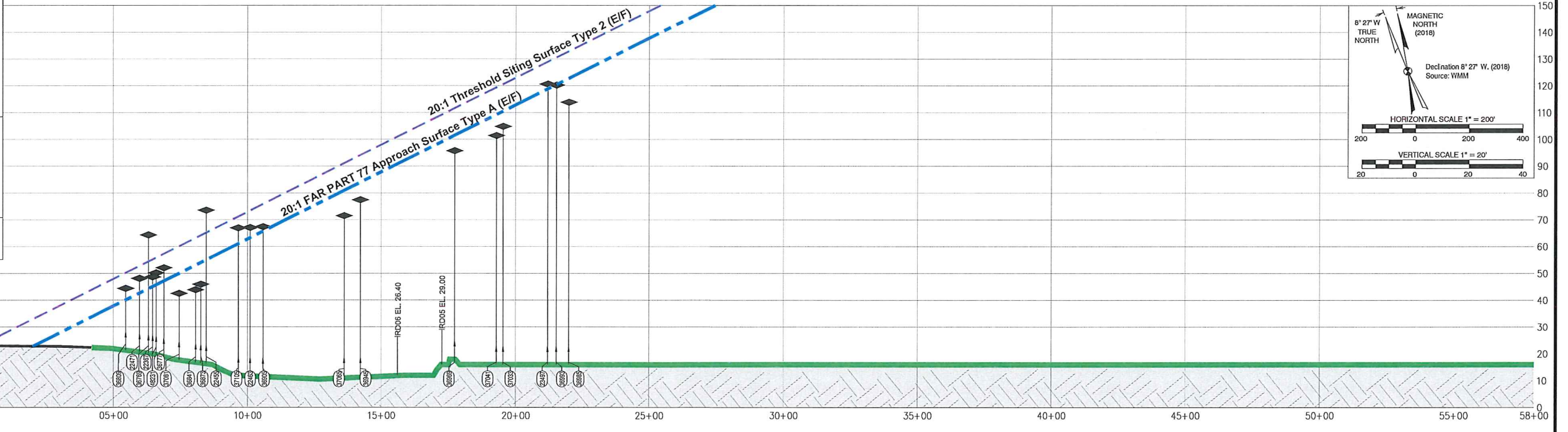
**LEGEND**

- AIRPORT PROPERTY LINE
- APPROACH SURFACE
- THRESHOLD SITING SURFACE (TSS)
- GUIDE PATH QUALIFICATION SURFACE (GQS)
- DEPARTURE SURFACE
- BRL - BUILDING RESTRICTION LINE (BRL)
- RSA - RUNWAY SAFETY AREA (RSA)
- TOFA - RUNWAY OBJECT FREE AREA (TOFA)
- TSA - TAXIWAY SAFETY AREA (TSA)
- TOFA - TAXIWAY OBJECT FREE AREA (TOFA)
- OFZ - RUNWAY OBSTACLE FREE ZONE (OFZ)
- RPZ - RUNWAY PROTECTION ZONE (RPZ)
- FENCE LINE
- FUTURE LAND ACQUISITION / FUTURE PROPERTY LINE
- PRECISION OBSTACLE FREE ZONE (POFZ)
- FUTURE BUILDING FACILITIES
- FUTURE PAVEMENT

**OBSTRUCTION DATA SOURCE**  
GGE\_Georgetown.dwg, Quantum mapping file (Quantum October 2, 2016)

**NOTE**  
ROAD ELEVATIONS INCREASED ABOVE GROUND ELEVATION AS PER 14 CFR PART 77, SECTION 77.17.

13-34	OBSTRUCTION (PROFILE)	TREE (PROFILE)
x 13-34	OBSTRUCTION (PLAN)	NAVAIDS & SIGNS (PROFILE)
↑	GROUND (PROFILE)	WALL (PROFILE)
↑	POLE (PROFILE)	BUILDING (PROFILE)
(E)	EXISTING	FENCE (PROFILE)
(F)	FUTURE	ROAD (PROFILE)
(E/F)	EXISTING / FUTURE	AIRFIELD LIGHTS (PLAN)



RUNWAY 29 END - PROFILE VIEW

MAGNETIC NORTH (2018)  
8° 27' W TRUE NORTH

Declination 8° 27' W, (2018)  
Source: WMM

HORIZONTAL SCALE 1" = 200'

VERTICAL SCALE 1" = 20'

C:\Users\velton\Desktop\GEORGETOWN\_CTY - GGE\_LAYOUT\_PLAN\_UPDATE\DWG\CAD\GGE-AUP-InterApproachSurface-RW1-28.dwg 07/10/2019

				<b>PROJECT NAME</b> GEORGETOWN COUNTY AIRPORT GEORGETOWN, SOUTH CAROLINA	
Arora Engineers, Inc. 1100 West Peachtree Street NW Suite 1900 Atlanta, GA 30309 Tel: 478.231.4500 Fax: 478.458.7500		TALBERT & BRIGHT ENGINEERS & PLANNING CONSULTANTS 1000 W. Peachtree Street, N.W. Atlanta, GA 30309 Tel: 478.231.4500 Fax: 478.458.7500		<b>DRAWING TITLE</b> INNER PORTION OF THE APPROACH SURFACE DRAWING - RUNWAY 29	
PROJECT NO.	DRAWN BY	CHECKED BY	SCALE	DATE	DRAWING NO.
2601 - 1601	WA	MS	AS SHOWN	SEP 2018	9







AIRPORT LAND USE RESTRICTION ZONE DESIGNATION						
	ZONE A	ZONE B1	ZONE B2	ZONE C	ZONE D	ZONE E
<b>AGRICULTURE, FARMING &amp; ANIMAL KEEPING</b>						
CROP PRODUCTION - DRY AND IRRIGATED FARMING	C1,2	Y	Y	C1,2	Y	Y
SPECIALTY CROPS, NURSERIES/GREENHOUSES, LANDSCAPE MATERIALS	N	Y	Y	N	Y	Y
ROW-CROP PROCESSING AND PACKAGING, WINERIES	N	Y	Y	N	Y	Y
ANIMAL PROCESSING AND PACKAGING	N	C2,3	Y	N	Y	Y
TRUCK FARMING, ROADSIDE STANDS, FARMERS MARKET	N	C2,3	C2,5	N	Y	Y
PASTURE AND RANGELAND GRAZING	N	Y	Y	Y	Y	Y
ANIMAL FEED LOTS (COMMERCIAL HOGS, DIARIES)	N	Y	Y	N	Y	Y
ANIMAL FEED LOTS (COMMERCIAL POULTRY)	N	N	N	N	Y	Y
GAME PRESERVES, FISH FARMING	N	N	C2	N	Y	Y
FEED LOTS, STOCKYARDS, ANIMAL COMMODITY SALES YARDS	N	C2	C2	N	Y	Y
ANIMAL HOSPITAL, VETERINARY CLINIC, KENNELS, PET BOARDING	N	C3	C5	N	Y	Y
EQUESTRIAN FACILITIES, EXOTIC ANIMALS	N	C3	C5	N	Y	Y
<b>PUBLIC USE FACILITIES, INSTITUTIONS &amp; UTILITIES</b>						
CIVIC-USE CONVENTION CENTER, AUDITORIUM, CONCERT HALL	N	N	N	N	C1,2	Y
SCHOOLS, HOSPITALS, AND CORRECTIONAL FACILITIES	N	N	N	N	C1,2	Y
LIBRARIES, MUSEUMS, CHURCHES, DAY-CARE, SOCIAL/CIVIC CLUBS	N	N	N	N	C1,2	Y
PARKS, ATHLETIC FIELDS, PLAYGROUNDS, PICNIC AREAS	N	N	N	N	C1,2	Y
CEMETERIES	N	Y	Y	N	Y	Y
PUBLIC UTILITIES (EXCLUDES ELECTRIC POWER PLANTS, LINES)	N	C1,2	C1,2	N	C1,2	C1,2
ELECTRIC POWER PLANTS AND OVERHEAD TRANSMISSION LINES	N	C1,2	C1,2	N	C1,2	C1,2
SOLID- HAZARDOUS WASTE, LANDFILLS (EXCLUDES TRANSFER STATIONS)	N	N	N	N	N	N
Recycling	N	C2,3	C2,5	C2	C2	C2
<b>RESIDENTIAL</b>						
SINGLE-FAMILY RESIDENTIAL	N	N	C7	N	C7	Y
MULTI-FAMILY RESIDENTIAL, MOBILE HOME UNITS / PARKS	N	N	N	N	C2,6,7	Y
GROUP HOMES, CONVALESCENT FACILITIES, NURSING / FAMILY CARE	N	N	N	N	C2,6,7	Y
APARTMENTS, DUPLEXES, TOWNHOMES, CONDOMINIUMS	N	N	N	N	C2,6,7	Y
TEMPORARY HOUSING	N	N	N	N	C2,6,7	Y
<b>COMMERCIAL RECREATIONAL</b>						
SWIMMING POOLS, WATER PARK, WATER SLIDES	N	N	Y	N	Y	Y
GYMS, HEALTH SPAS, INDOOR THEATERS, AUDITORIUMS	N	N	C5	N	C6	Y
BOWLING ALLEYS, SKATING RINKS, DANCE AND POOL HALLS, ARCADES	N	N	C5	N	C6	Y
OUTDOOR THEATERS, AMUSEMENT PARKS, CARNIVALS, FAIRS	N	N	N	N	C6	Y
GOLF COURSES, TENNIS COURTS	N	N	Y	N	Y	Y
<b>COMMERCIAL BUSINESS, RETAIL &amp; SERVICES</b>						
AERONAUTICAL BUSINESSES	N	N	Y	Y	Y	Y
GENERAL RETAIL STORES/COMPLEXES, RESTAURANTS, CONVENIENT STORES	N	N	Y	N	Y	Y
GENERAL OFFICES, EXECUTIVE OFFICES, RESEARCH FACILITIES	N	C3	C5	C4	Y	Y
VEHICLE SALES, BUILDING & LUMBER MATERIALS, FOOD-BEVERAGE SALES	N	N	C5	N	Y	Y
APPLIANCE-EQUIPMENT REPAIR FACILITIES, VEHICLE WASH	N	C3	C5	C4	Y	Y
SHOPPING MALLS, SHOPPING CENTERS, HOME IMPROVEMENT CENTERS	N	N	C5	N	C6	Y
BANKS, FINANCIAL INSTITUTIONS	N	N	C5	N	C6	Y
GASOLINE SERVICE STATIONS	N	N	Y	N	Y	Y
MODULAR SELF-STORAGE FACILITIES, MINI STORAGE UNITS	N	C3	C5	C2	Y	Y
PERSONAL HEALTH CLINIC, WELL-BEING & CARE FACILITIES	N	N	C5	N	Y	Y
MOTELS, HOTELS, BED & BREAKFAST	N	N	C4	N	C6	Y
RV PARKS, CAMPING AREAS	N	N	C4	N	Y	Y
MASS TRANSIT FACILITY / DEPOT	N	N	C5	Y	C6	Y
BROADCAST STUDIOS	N	N	Y	N	Y	Y
<b>COMMERCIAL BUSINESS, RETAIL &amp; SERVICES</b>						
MANUFACTURING FACILITIES, INDUSTRIAL PLANTS, WAREHOUSING	N	N	C5	C4	C6	Y
WAREHOUSE, WHOLESALE, DISTRIBUTION	N	C3	C5	C4	C6	Y
HEAVY INDUSTRIAL/MANUFACTURING	N	N	C5	N	C6	Y
LIGHT INDUSTRIAL/MANUFACTURING	N	C3	C5	C4	C6	Y
PETROLEUM AND CHEMICAL PRODUCT DEALERS-BULK STORAGE	N	C3	C5	N	C6	Y
MINING - SAND, GRAVEL, FILL DIRT	N	N	C1,2	N	C1,2	C1,2

- NOTES:**
- EXISTING GEORGETOWN COUNTY ZONING DESIGNATIONS ARE AS OF JANUARY 4, 2018, AS PER THE GEORGETOWN COUNTY WEBSITE, AND IS SUBJECT TO CHANGE. ZONING DESIGNATION LABELS ARE APPROXIMATE IN DESCRIPTION AND LOCATION AND ARE INTENDED FOR AIRPORT LAND USE COMPATIBILITY REFERENCE PURPOSES ONLY.
  - EXISTING CITY OF GEORGETOWN ZONING DESIGNATIONS ARE AS OF JANUARY 4, 2018, AS PER THE CITY OF GEORGETOWN WEBSITE, AND IS SUBJECT TO CHANGE. ZONING DESIGNATION LABELS ARE APPROXIMATE IN DESCRIPTION AND LOCATION AND ARE INTENDED FOR AIRPORT LAND USE COMPATIBILITY REFERENCE PURPOSES ONLY.
  - PUBLIC FACILITIES SUCH AS SCHOOLS, HOSPITALS, PLACES OF WORSHIP, ETC. ARE ONLY DEPICTED FOR SELECTED ONES THAT MAY HAVE AIRPORT LAND USE COMPATIBILITY CONCERNS, AS OF JANUARY 4, 2018. LOCATIONS AND CONFIGURATIONS OF SUCH FACILITIES ARE SUBJECT TO CHANGE.
  - MUNICIPAL BOUNDARIES ARE AS OF SEPTEMBER 29, 2017 AND MAY HAVE BEEN CHANGED SINCE, DUE TO ANNEXATIONS AND/OR DEANNEXATIONS.
  - GEORGETOWN COUNTY PROTECTS FOR AIRPORT AND AIRSPACE HAZARDS THROUGH COUNTY AIRPORT SAFETY OVERLAY ZONE (GEORGETOWN COUNTY ZONING ORDINANCE, ARTICLES XIX, SECTION 1900 AND ARTICLE XX, SECTION 2001).
  - THE UNDERLYING CURRENT COUNTY/CITY ZONING DESIGNATIONS DERIVED FROM THE FOLLOWING SOURCES. ZONING BOUNDARIES MAY ALSO BE OBTAINED AT THESE SITES:  
 GEORGETOWN COUNTY (GIS MAP SERVER): <http://gis1.georgetowncountysc.org/freance/Client/PublicAccess1/index.html?appconfig=WebMapServer>  
 CITY OF GEORGETOWN (2017 ZONING MAP): <http://cityofgeorgetownsc.com/download/Official-Zoning-Map-2017-Size-E.pdf>

**RECOMMENDED AIRPORT OVERLAY DISTRICT LAND USE RESTRICTION ZONE AREAS:**

- ZONE A. ZONE A IS THE RUNWAY PROTECTION ZONE, AS DEFINED IN THE FEDERAL AVIATION ADMINISTRATION ADVISORY CIRCULAR 150/5300-13A, SECTION 310, OR IN SUCCESSOR FAA ADVISORY CIRCULARS.
- ZONE B1. ZONE B1 IS THAT PORTION OF THE APPROACH ZONE, FROM THE OUTER EDGE OF ZONE A TO WHERE EACH APPROACH SURFACE IS 150 FEET ABOVE THEIR RESPECTIVE RUNWAY END ELEVATIONS.
- ZONE B2. ZONE B2 IS THAT PORTION OF THE APPROACH ZONE, FROM THE OUTER EDGE OF ZONE B1 TO THE END OF THE APPROACH ZONE, OR 10,000 FEET FROM INNER EDGE OF THE APPROACH ZONE, WHICHEVER IT REACHES FIRST.
- ZONE C. ZONE C IS FORMED BY OFFSETTING THE PRIMARY SURFACE EDGE OUTWARD BY 1,050 FEET, AND EXTENDING EACH OF ITS ENDS TO ITS RESPECTIVE RUNWAY ENDS APPROACH ZONE, OR EXTENDED AND SQUARED OFF AT THE OUTER EDGE OF ZONE B1, WHICHEVER THAT EXTENSIONS REACHES FIRST.
- ZONE D. ZONE D IS THOSE AREAS OF THE TRANSITIONAL AND HORIZONTAL ZONES NOT PART OF ZONES A, B1, B2, OR C.
- ZONE E. ZONE E IS IDENTICAL IN AREA, DIMENSIONS, AND LOCATION TO THE CONICAL ZONE.

EACH ZONE IS DEFINED GEOGRAPHICALLY FOR BOTH THE EXISTING AND ULTIMATE RUNWAY CONFIGURATIONS AND THE ZONES ARE COMPOSITE INTO THE SINGLE AIRPORT LAND USE RESTRICTION ZONES MAP SUCH THAT THE MOST RESTRICTIVE ZONE AND CRITERIA ARE APPLIED. THE ORDER OF THE ZONES FROM MOST RESTRICTIVE TO LEAST IS A, B1, B2, C, D, AND E.

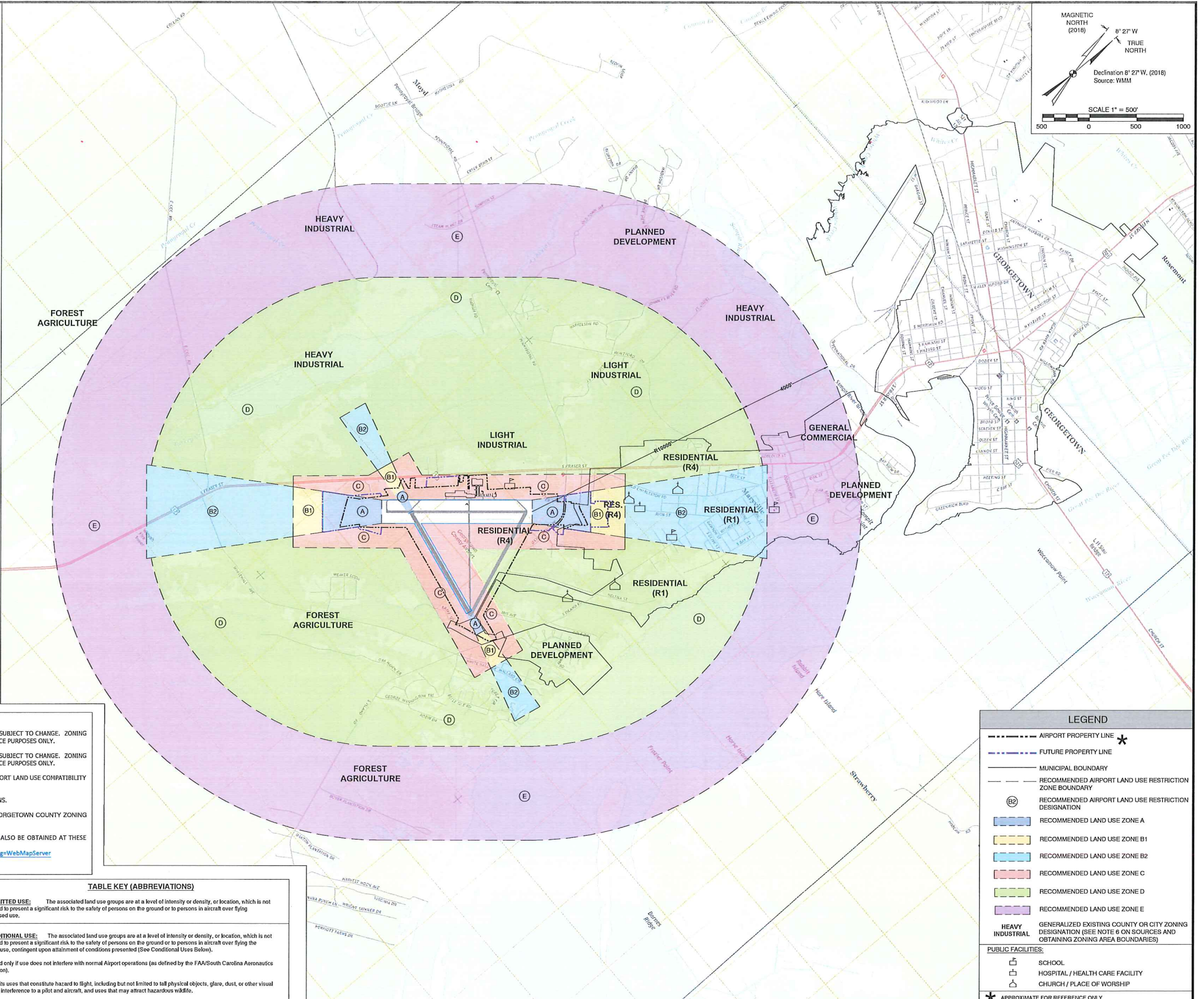
**TABLE KEY (ABBREVIATIONS)**

**(Y) PERMITTED USE:** The associated land use groups are at a level of intensity or density, or location, which is not considered to present a significant risk to the safety of persons on the ground or to persons in aircraft over flying the proposed use.

**(C) CONDITIONAL USE:** The associated land use groups are at a level of intensity or density, or location, which is not considered to present a significant risk to the safety of persons on the ground or to persons in aircraft over flying the proposed use, contingent upon attainment of conditions presented (See Conditional Uses Below).

- Allowed only if use does not interfere with normal Airport operations (as defined by the FAA/South Carolina Aeronautics Commission).
- Prohibits uses that constitute hazard to flight, including but not limited to tall physical objects, glare, dust, or other visual or electric interference to a pilot and aircraft, and uses that may attract hazardous wildlife.
- Use intensity restricted to 5 or less persons per acre, or equivalent per household.
- Use intensity restricted to 15 or less persons per acre, or equivalent per household.
- Use intensity restricted to 25 or less persons per acre in structures/buildings; and 50 or less persons per acre outdoors.
- Use intensity restricted to 100 or less persons per acre.
- Residential land uses permitted, with Residential Fair Disclosure required.

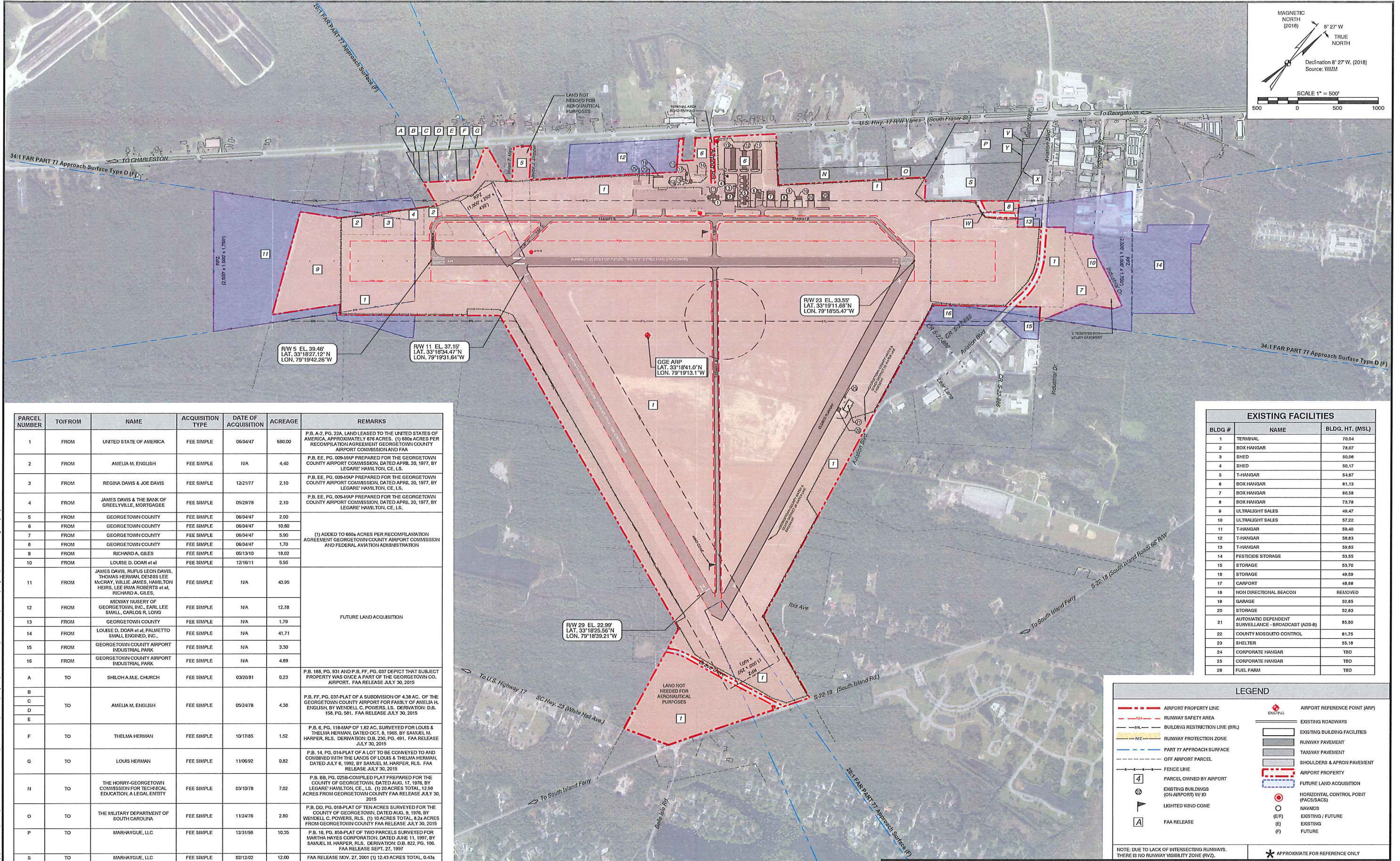
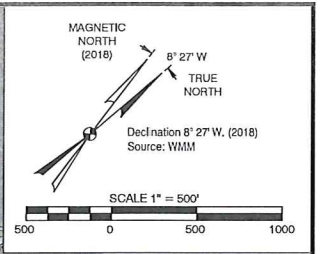
**(N) PROHIBITED USE:** The associated land use groups are at a level of intensity or density, or location, which presents a significant risk to the safety of persons on the ground or to persons in aircraft over flying the proposed use.



C:\Users\Aeromob\Desktop\Use\10317.D01 - GEORGETOWN CITY - GDE LAYOUT PLAN UPDATE\DWG\CAD\GDE-Airport Land Use.dwg 07/10/2018

				<b>PROJECT NAME:</b> GEORGETOWN COUNTY AIRPORT GEORGETOWN, SOUTH CAROLINA	
Aera Engineers, Inc. 1100 West Peachtree Street NW Suite 1900 Atlanta, GA 30309 Tel: 478.231.4000 Fax: 478.458.7990		PROJECT NO: 2601 - 1601 DRAWN BY: WA CHECKED BY: MS SCALE: AS SHOWN DATE: SEP 2018 DRAWING NO: 11		<b>DRAWING TITLE:</b> RECOMMENDED OFF-AIRPORT LAND USE COMPATIBILITY PLAN	





PARCEL NUMBER	TO/FROM	NAME	ACQUISITION TYPE	DATE OF ACQUISITION	ACREAGE	REMARKS
1	FROM	UNITED STATE OF AMERICA	FEE SIMPLE	06/04/47	680.00	P.B. A-2, PG. 22A, LAND LEASED TO THE UNITED STATES OF AMERICA, APPROXIMATELY 676 ACRES. (1) 680+ ACRES PER RECOMPILATION AGREEMENT GEORGETOWN COUNTY AIRPORT COMMISSION AND FAA
2	FROM	AMELIA M. ENGLISH	FEE SIMPLE	N/A	4.40	P.B. EE, PG. 009-MAP PREPARED FOR THE GEORGETOWN COUNTY AIRPORT COMMISSION, DATED APRIL 20, 1977, BY LEGARE HAMILTON, CE, LS.
3	FROM	REGINA DAVIS & JOE DAVIS	FEE SIMPLE	12/21/77	2.10	P.B. EE, PG. 009-MAP PREPARED FOR THE GEORGETOWN COUNTY AIRPORT COMMISSION, DATED APRIL 20, 1977, BY LEGARE HAMILTON, CE, LS.
4	FROM	JAMES DAVIS & THE BANK OF GREELEYVILLE, MORTGAGEE	FEE SIMPLE	05/28/78	2.10	P.B. EE, PG. 009-MAP PREPARED FOR THE GEORGETOWN COUNTY AIRPORT COMMISSION, DATED APRIL 20, 1977, BY LEGARE HAMILTON, CE, LS.
5	FROM	GEORGETOWN COUNTY	FEE SIMPLE	06/04/47	2.00	(1) ADDED TO 680+ ACRES PER RECOMPILATION AGREEMENT GEORGETOWN COUNTY AIRPORT COMMISSION AND FEDERAL AVIATION ADMINISTRATION
6	FROM	GEORGETOWN COUNTY	FEE SIMPLE	06/04/47	10.80	
7	FROM	GEORGETOWN COUNTY	FEE SIMPLE	06/04/47	5.90	
8	FROM	GEORGETOWN COUNTY	FEE SIMPLE	06/04/47	1.70	
9	FROM	RICHARD A. GILES	FEE SIMPLE	05/13/10	18.02	
10	FROM	LOUISE D. DOAR et al	FEE SIMPLE	12/16/11	5.55	
11	FROM	JAMES DAVIS, RUFUS LEON DAVIS, THOMAS HERMAN, DENNIS LEE McCRAY, WILLIE JAMES, HAMILTON HEIRS, LEE IRMA ROBERTS et al, RICHARD A. GILES.	FEE SIMPLE	N/A	43.95	
12	FROM	MIDWAY NURSERY OF GEORGETOWN, INC., EARL LEE SMALL, CARLOS R. LONG	FEE SIMPLE	N/A	12.78	
13	FROM	GEORGETOWN COUNTY	FEE SIMPLE	N/A	1.79	
14	FROM	LOUISE D. DOAR et al, PALMETTO SMALL ENGINEER, INC.,	FEE SIMPLE	N/A	41.71	
15	FROM	GEORGETOWN COUNTY AIRPORT INDUSTRIAL PARK	FEE SIMPLE	N/A	3.30	
16	FROM	GEORGETOWN COUNTY AIRPORT INDUSTRIAL PARK	FEE SIMPLE	N/A	4.89	
A	TO	SHLOH A.M.E. CHURCH	FEE SIMPLE	03/20/81	0.23	P.B. 188, PG. 931 AND P.B. FF, PG. 037 DEPICT THAT SUBJECT PROPERTY WAS ONCE A PART OF THE GEORGETOWN CO. AIRPORT. FAA RELEASE JULY 30, 2015
B	TO	AMELIA M. ENGLISH	FEE SIMPLE	05/24/78	4.38	P.B. FF, PG. 037-PLAT OF A SUBDIVISION OF 4.38 AC. OF THE GEORGETOWN COUNTY AIRPORT FOR FAMILY OF AMELIA H. ENGLISH, BY WENDELL C. POWERS, LS. DERIVATION: D.B. 158, PG. 581, FAA RELEASE JULY 30, 2015
C	TO	THELMA HERMAN	FEE SIMPLE	10/17/85	1.52	P.B. 6, PG. 118-MAP OF 1.52 AC. SURVEYED FOR LOUIS & THELMA HERMAN, DATED OCT. 8, 1985, BY SAMUEL M. HARPER, RLS. DERIVATION: D.B. 230, PG. 491, FAA RELEASE JULY 30, 2015
D	TO	LOUIS HERMAN	FEE SIMPLE	11/06/92	0.82	P.B. 14, PG. 014-PLAT OF A LOT TO BE CONVEYED TO AND COMBINED WITH THE LANDS OF LOUIS & THELMA HERMAN, DATED JULY 6, 1992, BY SAMUEL M. HARPER, RLS. FAA RELEASE JULY 30, 2015
E	TO	THE HORRY-GEORGETOWN COMMISSION FOR TECHNICAL EDUCATION, A LEGAL ENTITY	FEE SIMPLE	03/10/78	7.02	P.B. BB, PG. 0258-COMPILED PLAT PREPARED FOR THE COUNTY OF GEORGETOWN, DATED AUG. 17, 1976, BY LEGARE HAMILTON, CE, LS. (1) 20 ACRES TOTAL, 12.58 ACRES FROM GEORGETOWN COUNTY FAA RELEASE JULY 30, 2015
F	TO	THE MILITARY DEPARTMENT OF SOUTH CAROLINA	FEE SIMPLE	11/24/76	2.80	P.B. DD, PG. 018-PLAT OF TEN ACRES SURVEYED FOR THE COUNTY OF GEORGETOWN, DATED AUG. 8, 1976, BY WENDELL C. POWERS, RLS. (1) 10 ACRES TOTAL, 6.2+ ACRES FROM GEORGETOWN COUNTY FAA RELEASE JULY 30, 2015
G	TO	MAR-HAYGUE, LLC	FEE SIMPLE	12/31/98	10.35	P.B. 16, PG. 858-PLAT OF TWO PARCELS SURVEYED FOR MARTHA HAYES CORPORATION, DATED JUNE 11, 1997, BY SAMUEL M. HARPER, RLS. DERIVATION: D.B. 822, PG. 106, FAA RELEASE SEPT. 27, 1997
H	TO	MAR-HAYGUE, LLC	FEE SIMPLE	02/12/02	12.00	FAA RELEASE NOV. 27, 2001 (1) 12.43 ACRES TOTAL, 0.43+ ACRES FROM GEORGETOWN COUNTY
I	TO	GEORGETOWN COUNTY	FEE SIMPLE	N/A	3.08	FAA RELEASE JULY 30, 2015
J	TO	MAR-HAYGUE, LLC	EASEMENT	01/07/05	0.80	PERPETUAL ROADWAY EASEMENT
K	TO	SOUTHERN MACHINE AND TOOL, INC.	FEE SIMPLE	09/10/98	0.10	FAA RELEASE DEC. 28 1998
L	TO	SETAB INVESTMENT CORPORATION	FEE SIMPLE	N/A	0.57	FAA RELEASE JULY 30, 2015

EXISTING FACILITIES		
BLDG #	NAME	BLDG. HT. (MSL)
1	TERMINAL	70.04
2	BOX HANGAR	78.07
3	SHED	50.08
4	SHED	50.17
5	T-HANGAR	54.87
6	BOX HANGAR	61.13
7	BOX HANGAR	60.58
8	BOX HANGAR	73.78
9	ULTRALIGHT SALES	49.47
10	ULTRALIGHT SALES	57.22
11	T-HANGAR	59.40
12	T-HANGAR	58.63
13	T-HANGAR	59.65
14	PESTICIDE STORAGE	53.55
15	STORAGE	53.70
16	STORAGE	49.59
17	CARPORIT	48.68
18	NON DIRECTIONAL BEACON	REMOVED
19	GARAGE	52.83
20	STORAGE	52.83
21	AUTOMATIC DEPENDENT SURVEILLANCE - BROADCAST (ADS-B)	85.80
22	COUNTY MOSQUITO CONTROL	61.75
23	SHELTER	55.18
24	CORPORATE HANGAR	TBD
25	CORPORATE HANGAR	TBD
26	FUEL FARM	TBD

**LEGEND**

- AIRPORT PROPERTY LINE
- RUNWAY SAFETY AREA
- BUILDING RESTRICTION LINE (BRL)
- RUNWAY PROTECTION ZONE
- PART 77 APPROACH SURFACE
- OFF AIRPORT PARCEL
- FENCE LINE
- PARCEL OWNED BY AIRPORT
- EXISTING BUILDINGS (ON-AIRPORT) W/ ID
- LIGHTED WIND CONE
- FAA RELEASE
- AIRPORT REFERENCE POINT (ARP)
- EXISTING ROADWAYS
- EXISTING BUILDING FACILITIES
- RUNWAY PAVEMENT
- TAXIWAY PAVEMENT
- SHOULDERS & APRON PAVEMENT
- AIRPORT PROPERTY
- FUTURE LAND ACQUISITION
- HORIZONTAL CONTROL POINT (PACES/ACS)
- NAVADS
- (EF) EXISTING / FUTURE
- (E) EXISTING
- (F) FUTURE

NOTE: DUE TO LACK OF INTERSECTING RUNWAYS, THERE IS NO RUNWAY VISIBILITY ZONE (RVZ).

\* APPROXIMATE FOR REFERENCE ONLY

				<b>GEORGETOWN COUNTY AIRPORT</b> GEORGETOWN, SOUTH CAROLINA	
AREA ENGINEERS, INC. 1180 West Peachtree Street NW, Suite 1900 Atlanta, GA 30309 Tel: 478-231-4550 Fax: 478-429-7500		PROJECT NO: 2601-1601 DRAWN BY: WA CHECKED BY: MS SCALE: AS SHOWN DATE: SEP 2018 DRAWING NO: 12		PROJECT NAME: GEORGETOWN COUNTY AIRPORT DRAWING TITLE: AIRPORT PROPERTY MAP	

M:\2001 (Georgetown)\1601\_ALP\_Ustoria\ARORA\_FINAL\_CAD\_FILES\GSE-ALP-Airport\_Property\_Map\_0930\_2015.dwg 09/20/2018