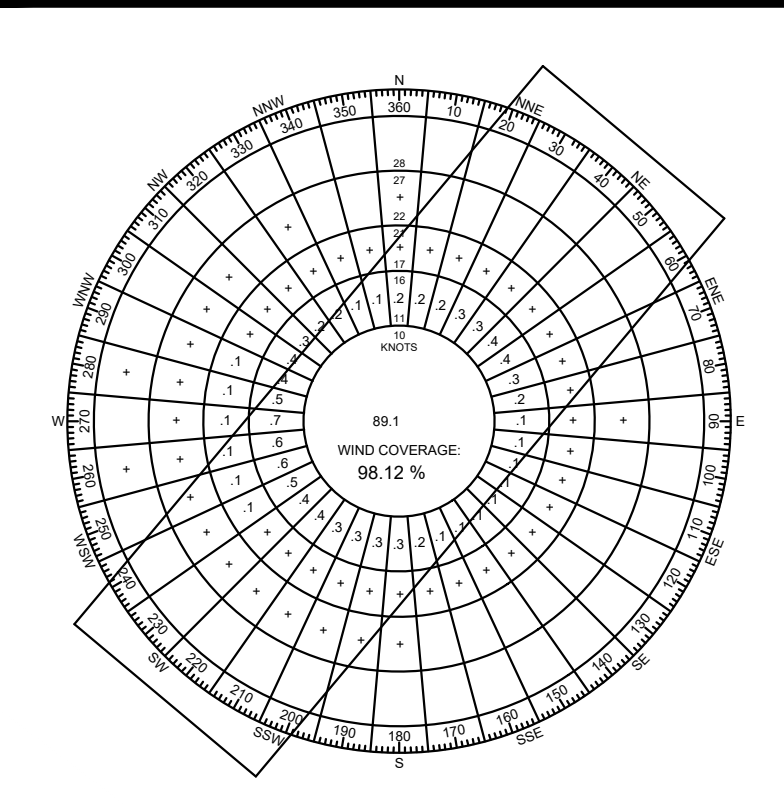


DIRECTION	10.5 KTS/12 MPH	13 KTS/15 MPH
04	55.93	56.35
22	24.2	24.54
CALM	16.4	16.4

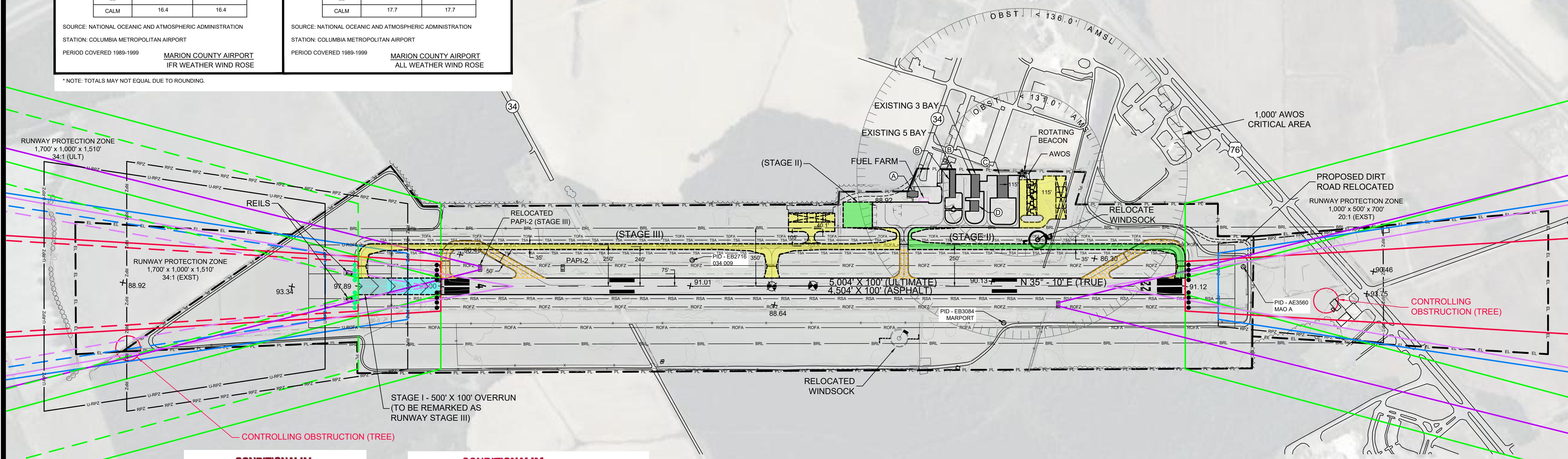
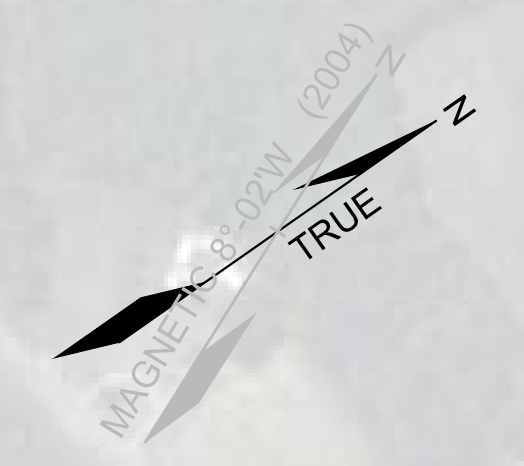
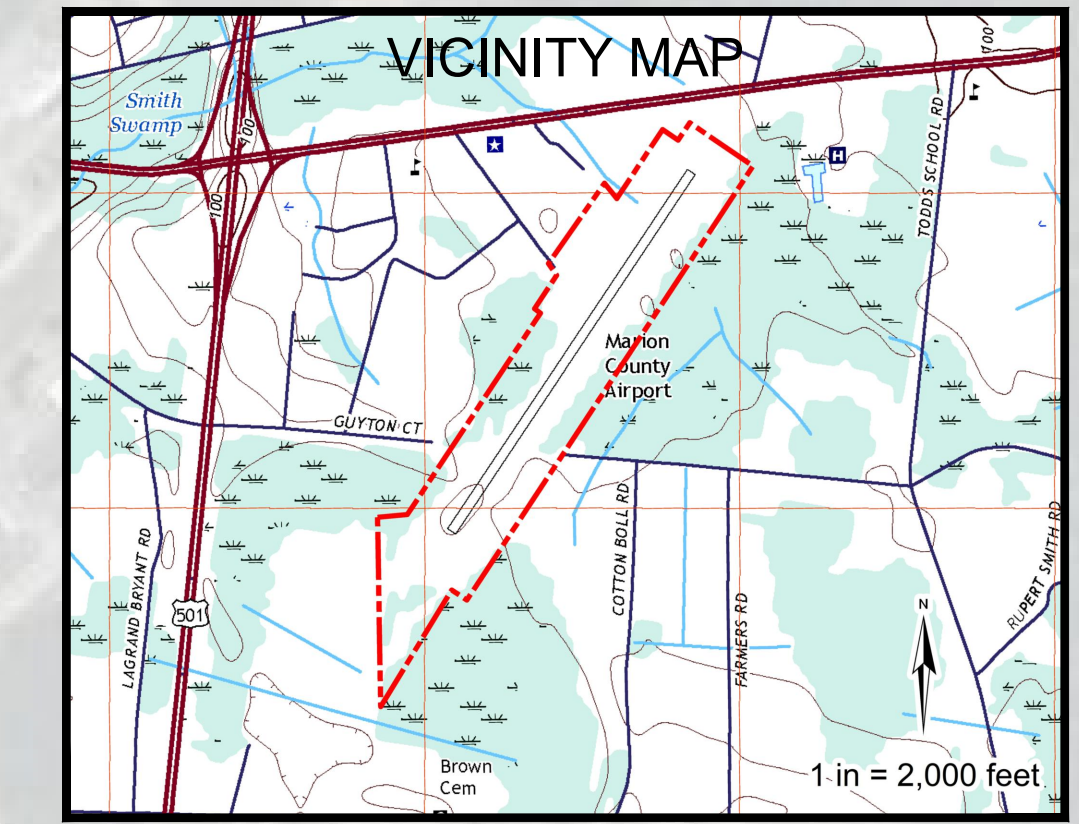
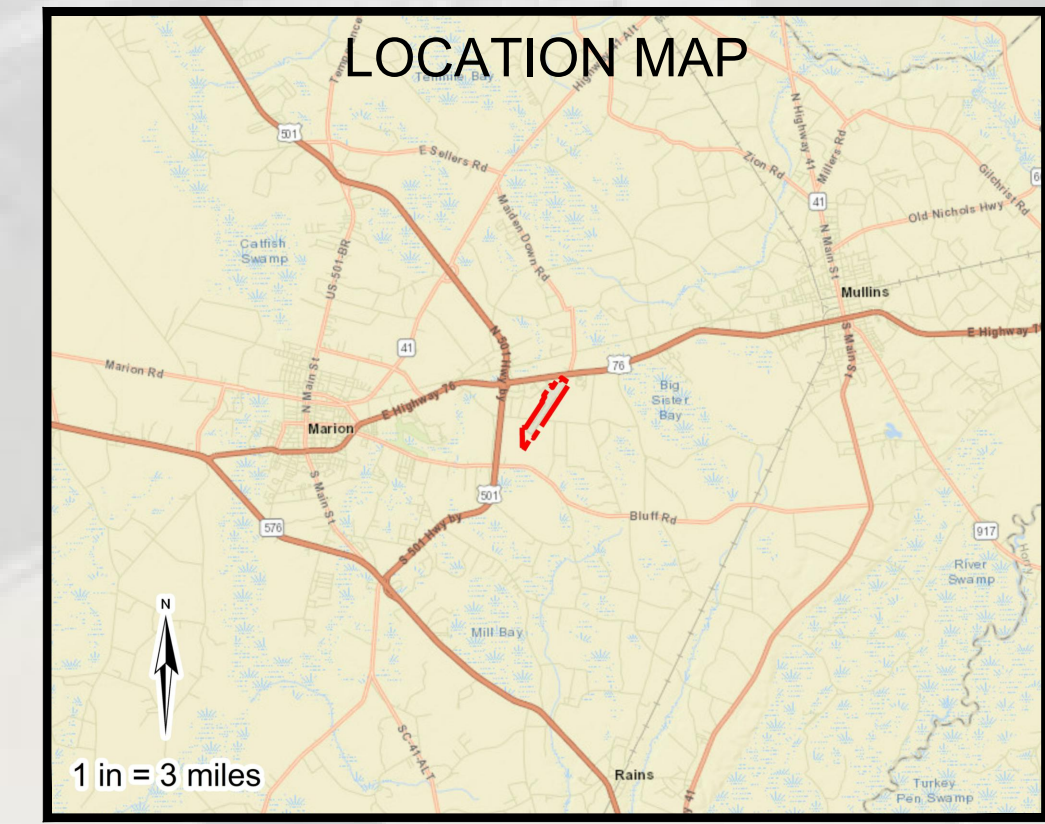
SOURCE: NATIONAL OCEANIC AND ATMOSPHERIC ADMINISTRATION
 STATION: COLUMBIA METROPOLITAN AIRPORT
 PERIOD COVERED 1989-1999
MARION COUNTY AIRPORT
 IFR WEATHER WIND ROSE



DIRECTION	10.5 KTS/12 MPH	13 KTS/15 MPH
04	36.21	36.78
22	42.42	43.80
CALM	17.7	17.7

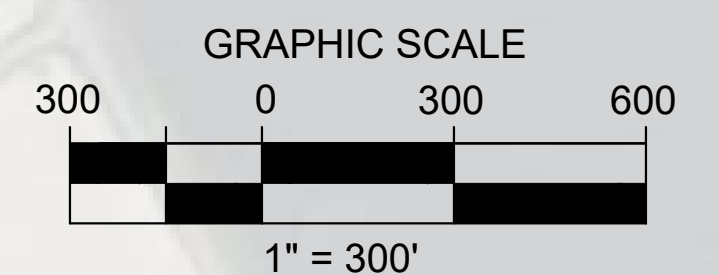
SOURCE: NATIONAL OCEANIC AND ATMOSPHERIC ADMINISTRATION
 STATION: COLUMBIA METROPOLITAN AIRPORT
 PERIOD COVERED 1989-1999
MARION COUNTY AIRPORT
 ALL WEATHER WIND ROSE

* NOTE: TOTALS MAY NOT EQUAL DUE TO ROUNDING.



CONDITIONALLY APPROVED
 FEDERAL AVIATION ADMINISTRATION
 APPROVAL SUBJECT TO COMMENTS IN APPROVAL LETTER
 Joseph Robinson
 APPROVING OFFICIAL
 ATLANTA AIRPORTS DISTRICT OFFICE
 DATE 12/15/2022

CONDITIONALLY APPROVED
 FEDERAL AVIATION ADMINISTRATION
 APPROVAL SUBJECT TO COMMENTS IN APPROVAL LETTER
 Pablo Rto
 APPROVING OFFICIAL
 ATLANTA AIRPORTS DISTRICT OFFICE
 DATE 6/14/07



	LEGEND	
	EXISTING	ULTIMATE
APPROACH SURFACE (SURFACE 4 - > 3/4 MILE)	[Blue dashed line]	[Blue solid line]
APPROACH SURFACE (SURFACE 6)	[Red dashed line]	[Red solid line]
DEPARTURE SURFACE (SURFACE 7)	[Green dashed line]	[Green solid line]
PAPI - OBSTACLE CLEARING SURFACE (OCS)	[Purple dashed line]	[Purple solid line]
PAPI - LIGHT SIGNAL CLEARING SURFACE (LSCS)	[Yellow dashed line]	[Yellow solid line]

NOTE: ALL COORDINATES ARE BASED UPON NAD 83 DATA.

BUILDING LEGEND			
IDENTIFICATION	BUILDING TYPE	TOP BUILDING ELEVATION	SIZE (S.F.)
1	AIRPORT TERMINAL	108'	2,400
2	EXISTING T-HANGAR	112'	7,000
3	EXISTING T-HANGAR	112'	6,400
4	EXISTING BOX-HANGAR	112'	1,600

REVISION BLOCK			
NUMBER	REVISIONS	BY:	DATE:
1	ADD OVERRUN AND UPDATE TO 61407 ALP	TALBERT, BRIGHT & ELLINGTON (TGM)	OCT. 2022
2	UPDATE TO 61407 ALP	TALBERT, BRIGHT & ELLINGTON (TGM)	DEC. 2022

APPROVALS			
MARION COUNTY AIRPORT			
12/15/2022	Tim Harper	County Administrator	SIGNATURE
DATE	SIGNATURE	TITLE	
SOUTH CAROLINA AERONAUTICS COMMISSION			
12/15/2022	Gary Siegfried	Executive Director	SIGNATURE
DATE	SIGNATURE	TITLE	

RUNWAY 04/22 DATA			
	EXISTING	ULTIMATE	
RUNWAY LENGTH & WIDTH	04,504' X 100'	5,004' X 100'	
EFFECTIVE GRADIENT (%)	0.0355%	0.0010%	
SURFACE MATERIAL	ASPHALT	N/C	
PAVEMENT STRENGTH (IN POUNDS)	26 SW 34 DW	N/C	
RUNWAY LIGHTING	MIRL	MIRL	
RUNWAY MARKING	MPI	N/C	
AIRPORT NAVAIDS	GPS PAPI-2 REILS RWY 4 ROTATING BEACON	N/C	
PART 77 APPROACH CATEGORY/TYPE	C (NP)	C (NP)	
OBJECT FREE AREA (OFA)	WIDTH 500' LENGTH (BEYOND END) 300'		
RUNWAY SAFETY AREA (RSA)	WIDTH 150' LENGTH (BEYOND END) 300'		
RUNWAY 04 RPZ	1,700'x1,000'x1,510'	N/C	
RUNWAY 22 RPZ	1,000'x500'x700'	N/C	
VISIBILITY MINIMUMS	7/8 MILE/1 MILE	N/C	

GENERAL AIRPORT DATA			
	EXISTING	ULTIMATE	
AIRPORT REFERENCE CODE	B-II (SMALL)	B-II (SMALL)	
ESTABLISHED AIRPORT ELEV.	92.8' MSL	N/C	
MEAN DAILY MAX. TEMPERATURE	90°F	N/C	
TAXIWAY PVT. STRENGTH (IN POUNDS)	26 SW, 34 DW	N/C	
APRON PAVEMENT STRENGTH (IN POUNDS)	26 SW, 34 DW	N/C	
TAXIWAY LIGHTING	NONE	MIL	
AIRPORT REFERENCE POINT (ARP)	34° 10' 52.20" N 79° 20' 05.00" W	34° 10' 52.62" N 79° 20' 05.63" W	
PART 77 APPROACH ZONE - RUNWAY 04	34:1	N/C	
PART 77 APPROACH ZONE - RUNWAY 22	20:1	N/C	
AIRPORT & TERMINAL NAVAIDS	VOR/DME-A, NDB, GPS	N/C	
CRITICAL AIRCRAFT	KING AIR 200	KING AIR 200	
RUNWAY	LATITUDE LONGITUDE	LATITUDE LONGITUDE	
04	EXISTING 34° 10' 33.91" N 79° 20' 20.28" W	ULTIMATE 34° 10' 28.99" N 79° 20' 23.68" W	
22	EXISTING 34° 11' 10.60" N 79° 19' 49.84" W	ULTIMATE SAME	

LEGEND			
	EXISTING	ULTIMATE	
PROPERTY LINE	PL	N/C	
EASEMENT LINE	EL	N/C	
BUILDING RESTRICTION LINE (BRL)	BRL	N/C	
RUNWAY PROTECTION ZONE	RPZ	N/C	
PAVEMENT	SEE STAGING		
BUILDINGS	SEE STAGING		
FENCING	F	N/C	
GROUND CONTOUR	G	N/C	
WOODED AREA	W	N/C	
DITCH/CREEK	D	N/C	
AIRPORT REFERENCE POINT	ARP	N/C	
RUNWAY SAFETY AREA (RSA)	RSA	N/C	
OBSTACLE FREE AREA (OFA)	OFA	N/C	
THRESHOLD LIGHTS	TL	N/C	
STAGE I (0-5 yrs)	STAGE II (6-10 yrs)	STAGE III (11-20 yrs)	

THE PREPARATION OF THIS DOCUMENT WAS FINANCED IN PART THROUGH A PLANNING GRANT FROM THE FEDERAL AVIATION ADMINISTRATION AS PROVIDED UNDER SECTION 505 OF THE AIRPORT AND AIRWAY IMPROVEMENT ACT OF 1982. THE CONTENTS DO NOT NECESSARILY REFLECT THE OFFICIAL VIEWS OR POLICY OF THE FAA. ACCEPTANCE OF THIS REPORT BY THE FAA DOES NOT IN ANY WAY CONSTITUTE A COMMITMENT ON THE PART OF THE UNITED STATES TO PARTICIPATE IN ANY DEVELOPMENT DEPICTED THEREIN NOR DOES IT INDICATE THAT THE PROPOSED DEVELOPMENT IS ENVIRONMENTALLY ACCEPTABLE IN ACCORDANCE WITH APPROPRIATE PUBLIC LAWS.

CONSTRUCTION REQUIREMENT

TO PROTECT OPERATIONAL SAFETY AND FUTURE DEVELOPMENT, ALL PROPOSED CONSTRUCTION ON THE AIRPORT MUST BE COORDINATED BY THE AIRPORT OWNER WITH THE FAA AIRPORTS DISTRICT OFFICE PRIOR TO CONSTRUCTION. FAA'S REVIEW TAKES APPROXIMATELY 60 DAYS.

MARION COUNTY AIRPORT
 AIRPORT LAYOUT PLAN

PREPARED BY:
 SOUTH CAROLINA DEPARTMENT
 OF COMMERCE
 Division of Aeronautics
 P.O. BOX 280068
 COLUMBIA, SC 29228-0068
 803-896-6260

DRAWN BY: DAPHNE BREWINGTON
 CHECKED BY: JOHN FLOYD
 REVISION NO: 2 OF 7

SCALE: 1" = 300'
 DATE: 04/2006