

#	DESCRIPTION	TOP ELEV.
1	TERMINAL BUILDING (3,286 SF)	591'
2	HANGAR (10,100 SF)	581'
3	HANGAR (2,550 SF) (TO BE RELOCATED)	581'
4	HANGAR (3,852 SF) (TO BE RELOCATED)	580'
5	HANGAR (4,599 SF) (TO BE RELOCATED)	576'
6	HANGAR (5,111 SF)	562'
7	HANGAR (4,800 SF)	561'
8	HANGAR (2,040 SF) (TO BE RELOCATED)	560'

#	DESCRIPTION	TOP ELEV.
A	BOX HANGAR (3 UNIT) (5,904 SF)	-580'
B	CONVENTIONAL HANGAR (10,000 SF)	-573'
C	1-HANGAR (E UNIT) (1,938 SF)	-581'
D	CONVENTIONAL HANGAR (3,600 SF)	-581'

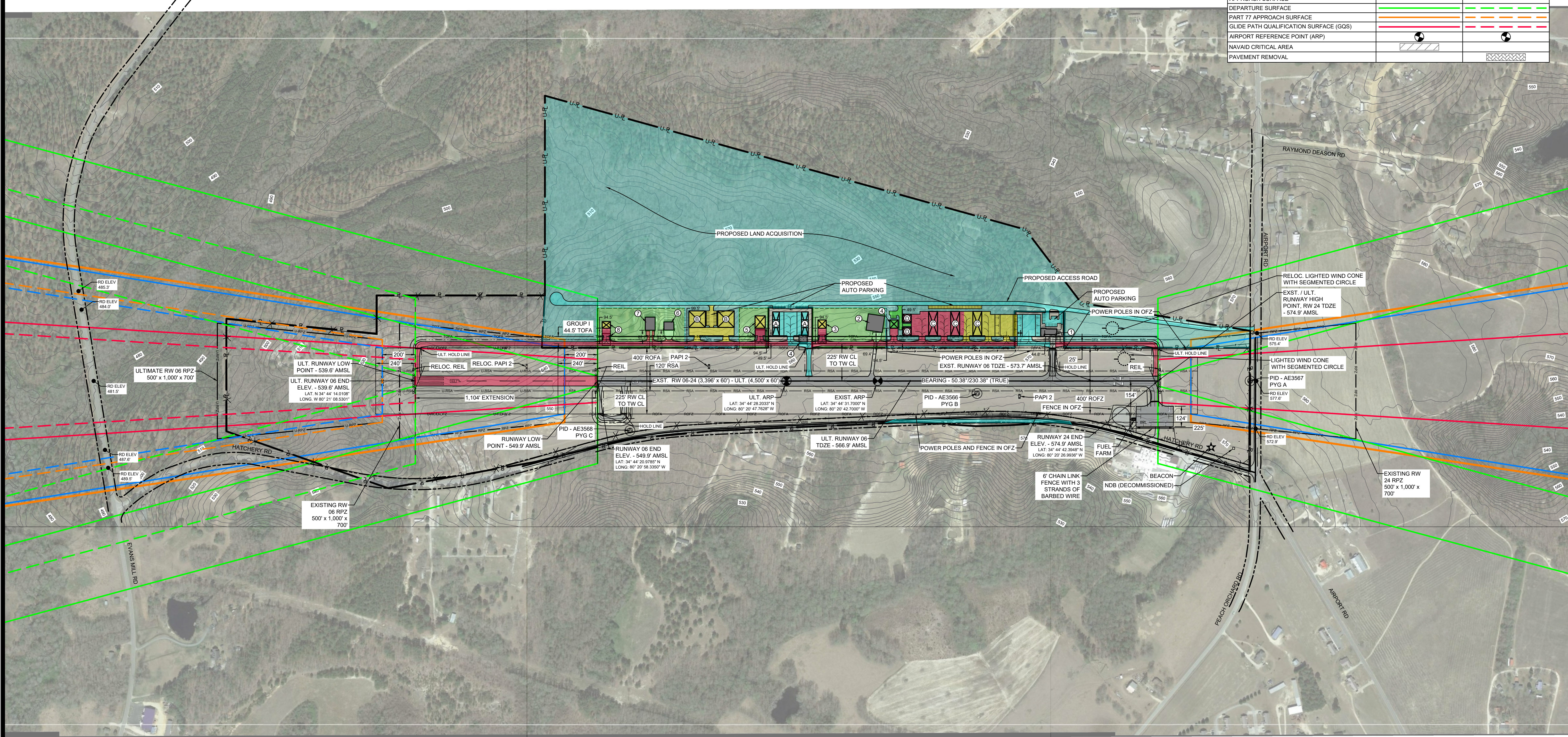
**FAA DISCLAIMER**

THE CONTENTS DO NOT NECESSARILY REFLECT THE OFFICIAL VIEWS OR POLICIES OF THE FAA. THE ACCEPTANCE OF THIS PLAN BY THE FAA DOES NOT IN ANY WAY CONSTITUTE A COMMITMENT ON THE PART OF THE UNITED STATES TO PARTICIPATE IN ANY DEVELOPMENT DEPICTED HEREIN NOR DOES IT INDICATE THAT THE PROPOSED DEVELOPMENT IS ENVIRONMENTALLY ACCEPTABLE IN ACCORDANCE WITH APPROPRIATE PUBLIC LAWS.

ITEM	EXISTING	ULTIMATE
GROUND CONTOURS	1160	
WOOD AREA		
ROADS (PAVED)		
WATER FEATURE		
FENCE		
AIRPORT BUILDINGS / STRUCTURES		
AIRPORT PAVED AREAS		
AIRPORT PROPERTY LINE (PL)	R	U-R
RUNWAY OBJECT FREE AREA	ROFA	U-ROFA
RUNWAY OBSTACLE FREE ZONE	ROFZ	U-ROFZ
RUNWAY SAFETY AREA	RSA	U-RSA
RUNWAY PROTECTION ZONE	RPZ	U-RPZ
BUILDING RESTRICTION LINE	BRL	U-BRL
APPROACH SURFACE		
DEPARTURE SURFACE		
PART 77 APPROACH SURFACE		
GLIDE PATH QUALIFICATION SURFACE (GQS)		
AIRPORT REFERENCE POINT (ARP)		
NAVAID CRITICAL AREA		
PAVEMENT REMOVAL		

DATE	REVISIONS
1	
2	
3	
4	
5	

DESIGNED BY:	TGM
PROJECT ENG.:	JAS
PROJECT NO.:	3509-2001
DRAWN BY:	TGM
CHECKED BY:	JAS
DATE ISSUED:	AUG. 11, 2021



**PAGELAND AIRPORT**

AIRPORT LAYOUT PLAN UPDATE  
 AIRPORT LAYOUT PLAN

**APPROVALS**

TOWN OF PAGELAND

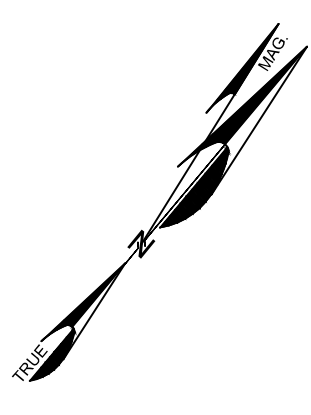
8/13/2021 *Cecil Hemmy* Town Administrator  
 DATE SIGNATURE TITLE

**CONDITIONALLY APPROVED**

FEDERAL AVIATION ADMINISTRATION  
 APPROVAL SUBJECT TO COMMENTS IN APPROVAL LETTER

APPROVING OFFICIAL *Chris U. Ray* DATE 8/26/2021  
 ATLANTA AIRPORTS DISTRICT OFFICE

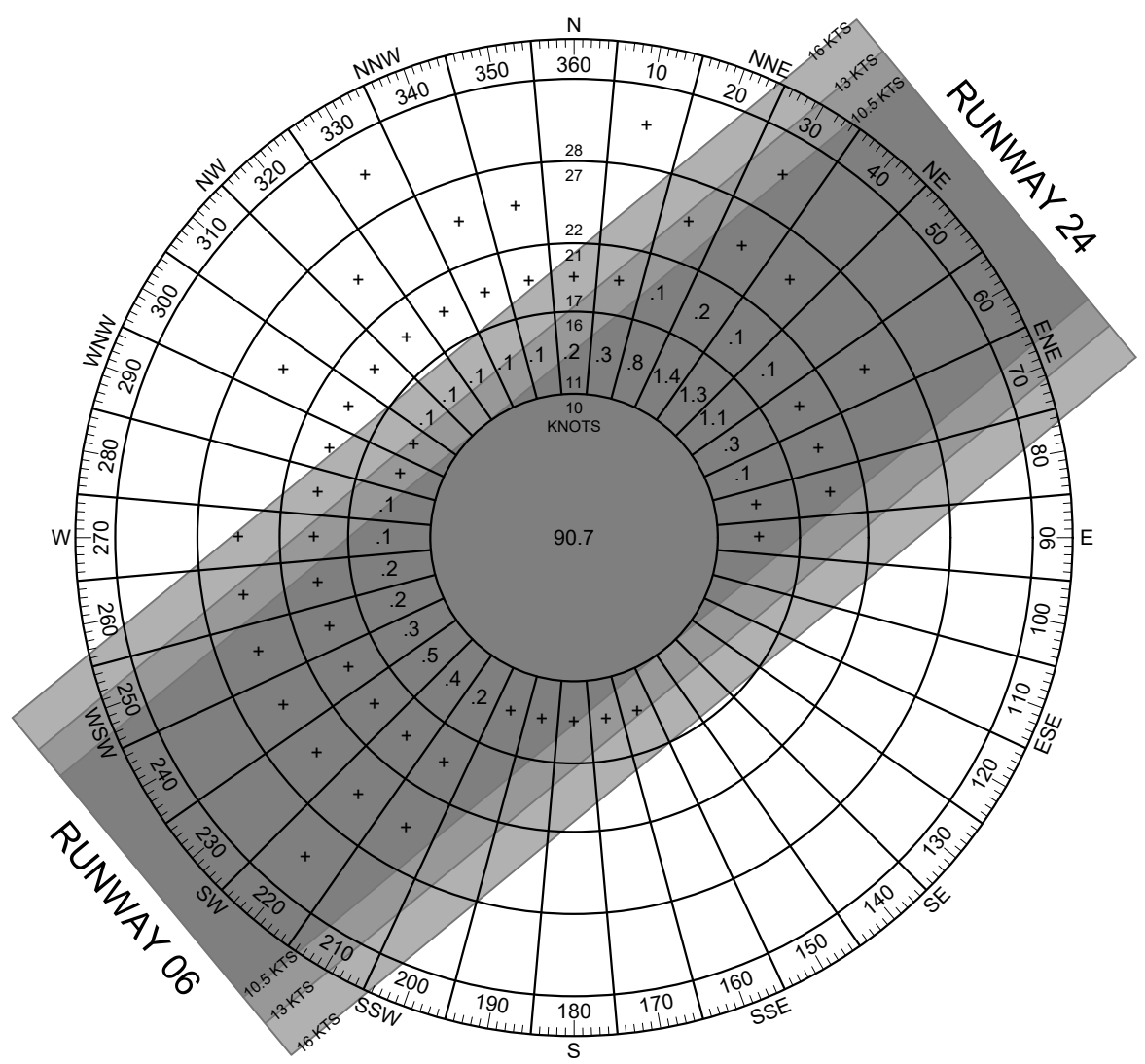
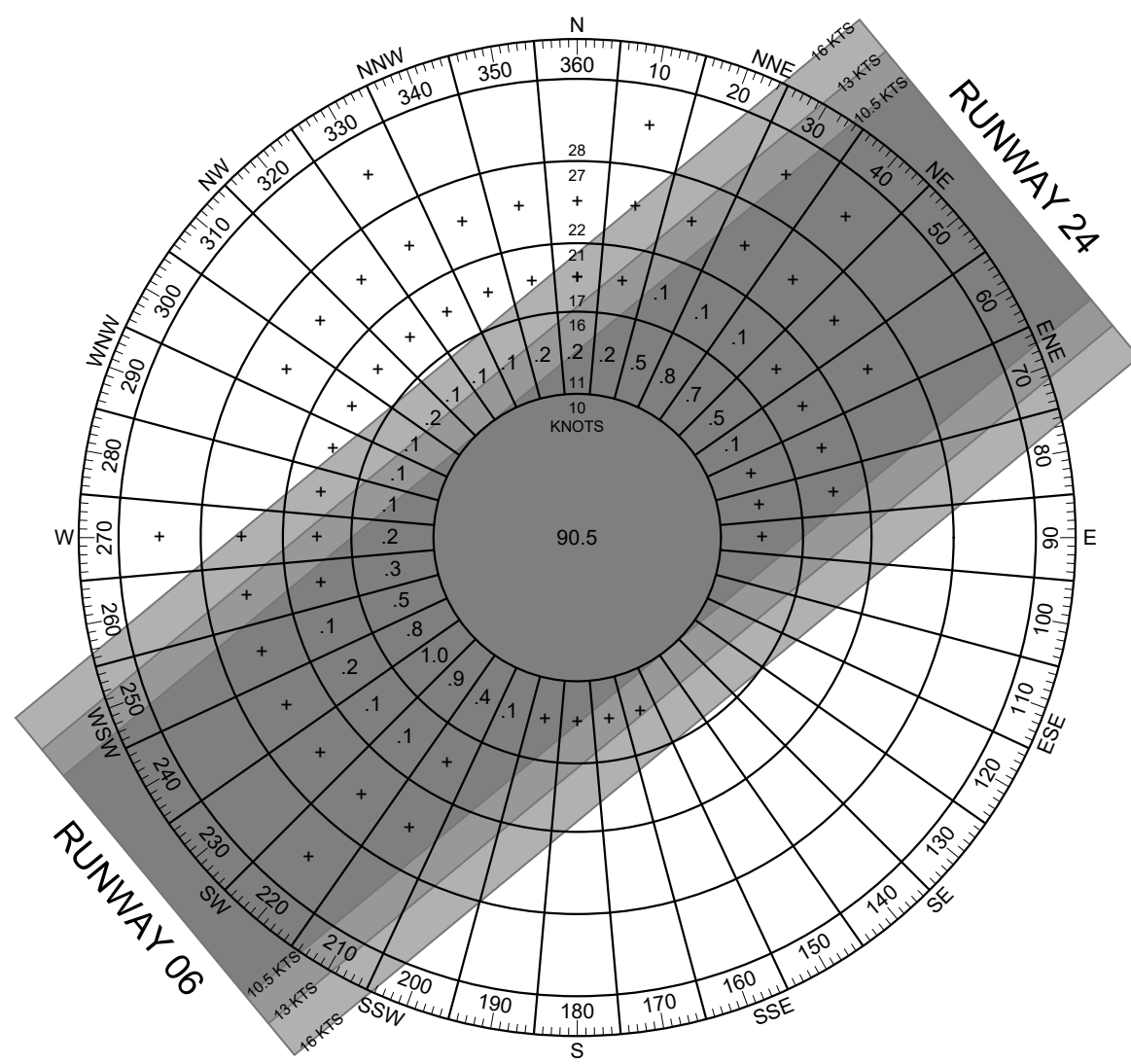
MAGNETIC DECLINATION  
 8° 04' W (DECEMBER 2020)  
 CHANGING 3' W PER YEAR  
 (SOURCE: NOAA NCEI)



DEVELOPMENT STAGES	DATE	COLOR
PHASE I	2021-2025	Blue
PHASE II	2026-2030	Green
PHASE III	2031-2040	Yellow
ULTIMATE	2041 +	Red

MODIFICATION TO FAA DESIGN STANDARDS			
NO.	MODIFICATION	WAIVER	DATE
	NONE REQUIRED		

**TALBERT, BRIGHT & ELLINGTON**  
 ENGINEERING & PLANNING CONSULTANTS  
 3525 WHITEHALL PARK DRIVE, SUITE 210  
 CHARLOTTE, NORTH CAROLINA 28273  
 PHONE: 704-426-6070 FAX: 704-426-6080  
 NC LICENSE NO. C-1163



CROSSWIND COVERAGE	
KNOTS	RWY 06-24
10.5	98.66%
13	99.34%
16	99.88%

**ALL WEATHER WIND ROSE**  
 SOURCE: NATIONAL WEATHER RECORDS  
 CENTER: ASHEVILLE, N.C.  
 STATION: 723194 - MONROE AIRPORT  
 PERIOD: 2010-2019

CROSSWIND COVERAGE	
KNOTS	RWY 06-24
10.5	99.10%
13	99.60%
16	99.88%

**IFR WIND ROSE**  
 SOURCE: NATIONAL WEATHER RECORDS  
 CENTER: ASHEVILLE, N.C.  
 STATION: 723194 - MONROE AIRPORT  
 PERIOD: 2010-2019

SURVEY MONUMENT DATA					
PID	DESIGNATION	LATITUDE	LONGITUDE	ELEVATION	TYPE
AE3566	PYG B	34° 44' 34.90619"	80° 20' 36.52759"	567.6'	PACS
AE3567	PYG A	34° 44' 45.92208"	80° 20' 21.83450"	578.1'	SACS
AE3568	PYG C	34° 44' 19.92369"	80° 20' 54.22548"	554.4'	SACS

RUNWAY DATA TABLE		
ITEM	RUNWAY 06-24	
	EXISTING	ULTIMATE
RUNWAY DIMENSIONS	3,396' X 60'	4,500' X 60'
RUNWAY CRITICAL AIRCRAFT	CIRRUS SR22	SAME
RUNWAY DESIGN CODE (RDC)	A/I/5000	SAME
APPROACH REFERENCE CODE (APRC)	06	24
DEPARTURE REFERENCE CODE (DPRC)	06	24
RUNWAY END COORDINATES	LAT: N 13° 42' 20.9150"	LAT: N 13° 42' 14.0100"
RUNWAY END ELEVATION	549.9' AMSL	539.6' AMSL
DISPLACED THRESHOLD	NONE	SAME
DISPLACED THRESHOLD COORDINATES	N/A	SAME
DISPLACED THRESHOLD ELEVATION	N/A	SAME
RUNWAY HIGH POINT	574.9' AMSL	SAME
RUNWAY LOW POINT	549.9' AMSL	539.6' AMSL
TOUCHDOWN ZONE ELEVATION (TDZE)	574.9' AMSL	566.9' AMSL
EFFECTIVE GRADIENT	0.736%	0.784%
RSA DIMENSIONS (LENGTH X WIDTH) (RUNWAY END)	ACTUAL 240' X 120'	REQUIRED 240' X 120'
ROFA DIMENSIONS (LENGTH X WIDTH) (RUNWAY END)	ACTUAL 240' X 400'	REQUIRED 240' X 400'
ROFZ DIMENSIONS	3,796' X 400'	4,900' X 400'
INNER APPROACH OFZ DIMENSIONS	N/A	SAME
PRECISION OFZ DIMENSIONS	N/A	SAME
RPZ DIMENSIONS (INNER WIDTH X LENGTH X OUTER WIDTH)	500' X 1,000' X 700'	SAME
FAA PART 77 CATEGORY	06	24
FAA PART 77 APPROACH SURFACES (INNER WIDTH X LENGTH X OUTER WIDTH)	1,000' X 1,000' X 3,500'	3,500' X 1,000' X 3,500'
ALL WEATHER WIND COVERAGE (10.5/13/16 KTS)	98.66%/99.34%/99.88%	SAME
IFR PERCENT WIND COVERAGE (10.5/13/16 KTS)	99.10%/99.60%/99.88%	SAME
INSTRUMENT RUNWAYS	06	24
PAVEMENT TYPE	ASPHALT	SAME
PAVEMENT STRENGTH/GEAR CONFIGURATION (THOUSAND POUNDS)	S-12.5	S-24
PAVEMENT CLASSIFICATION NUMBER (PCN)	NOT AVAILABLE	SAME
SURFACE TREATMENT	NONE	SAME
RUNWAY LIGHTING	MIRL	SAME
RUNWAY MARKING	24	NON-PRECISION
ELECTRONIC & VISUAL APPROACH AIDS	06	PAPI-2
AERONAUTICAL SURVEY REQUIRED FOR APPROACH	24	VGS

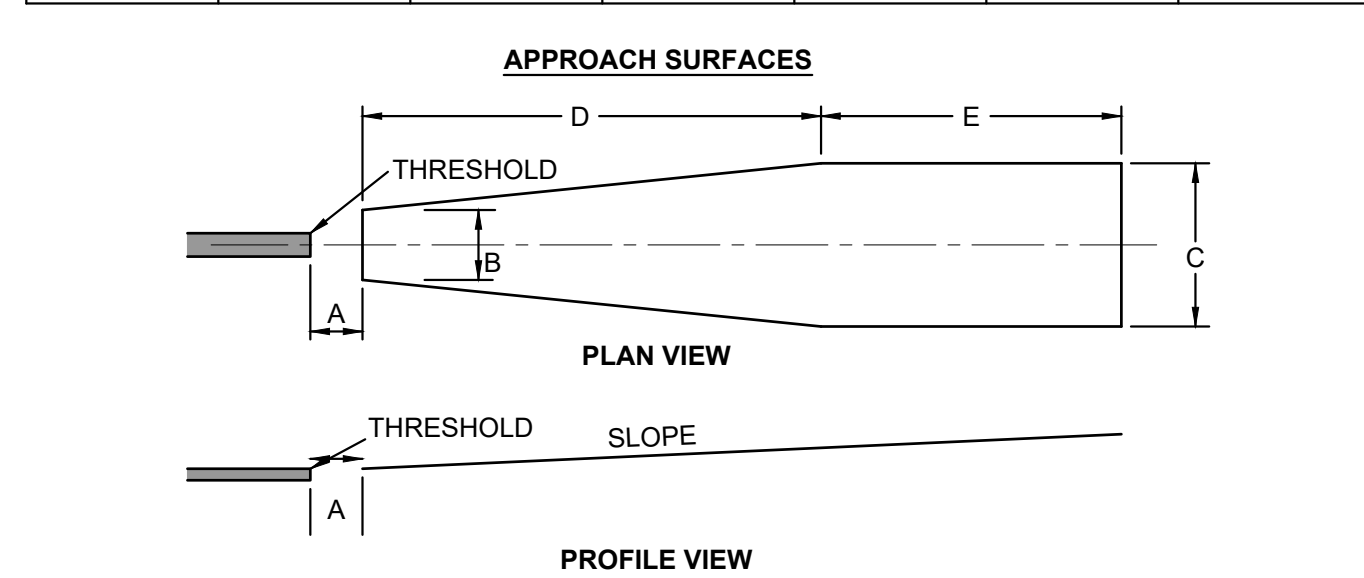
DECLARED DISTANCE TABLE				
	RUNWAY 06		RUNWAY 24	
	EXISTING	ULTIMATE	EXISTING	ULTIMATE
TAKE OFF RUNWAY AVAILABLE (TORA)	3,396'	4,500'	3,396'	4,500'
TAKE OFF DISTANCE AVAILABLE (TODA)	3,396'	4,500'	3,396'	4,500'
ACCELERATE STOP DISTANCE AVAILABLE (ASDA)	3,396'	4,500'	3,396'	4,500'
LANDING DISTANCE AVAILABLE (LDA)	3,396'	4,500'	3,396'	4,500'

EXISTING RUNWAY PROTECTION ZONE (RPZ)					
RUNWAY	INNER WIDTH (W <sub>i</sub> )	LENGTH (L)	OUTER WIDTH (W <sub>o</sub> )	RPZ (ACRES)	INTEREST
06	500'	1,000'	700'	13.770	FEE
24	500'	1,000'	700'	13.770	FEE

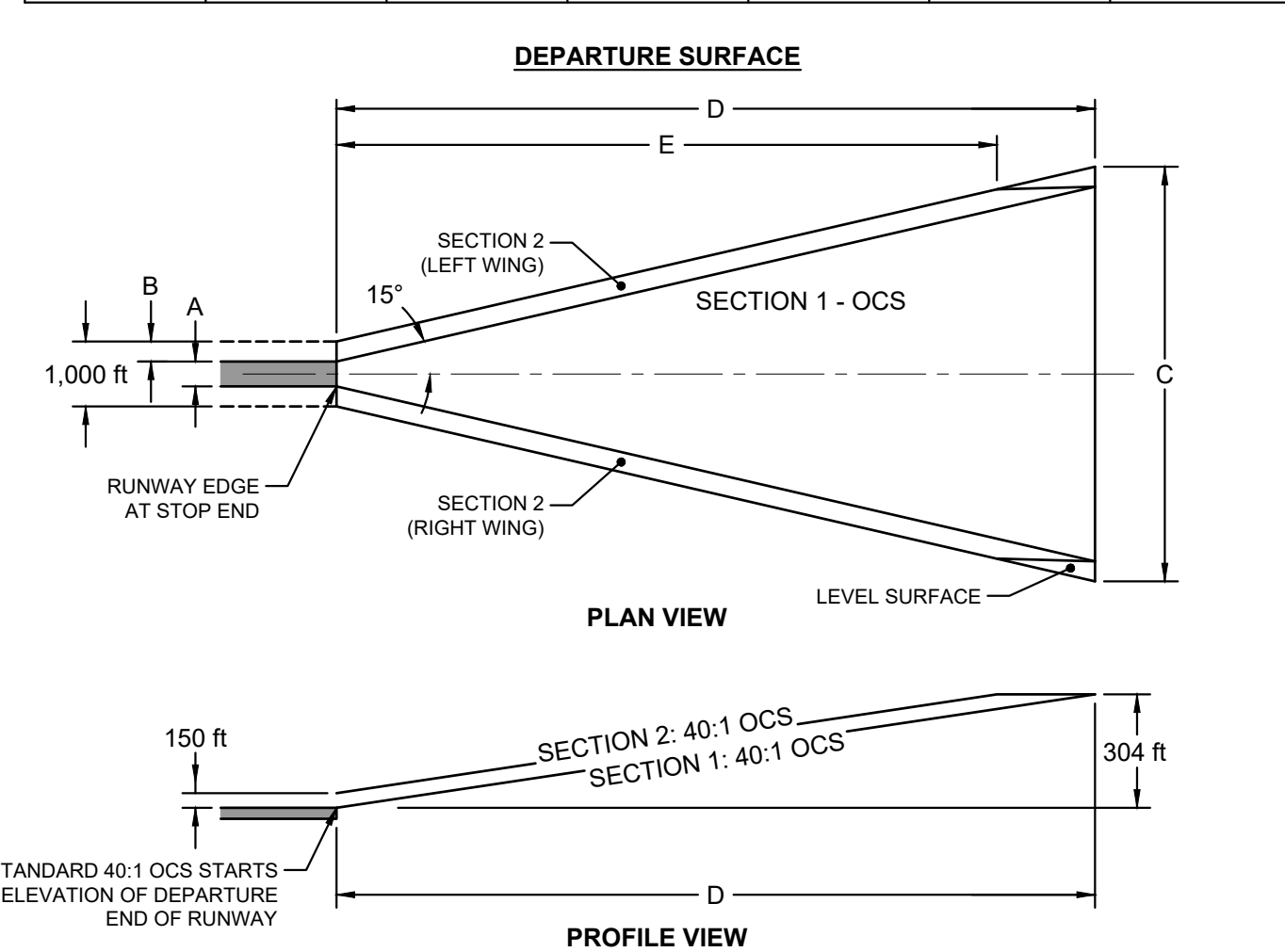
ULTIMATE RUNWAY PROTECTION ZONE (RPZ)					
RUNWAY	INNER WIDTH (W <sub>i</sub> )	LENGTH (L)	OUTER WIDTH (W <sub>o</sub> )	RPZ (ACRES)	INTEREST
06	500'	1,000'	700'	13.770	FEE
24	500'	1,000'	700'	13.770	FEE

AIRPORT DATA TABLE		
ITEM	EXISTING	ULTIMATE
FAA ASSET CLASSIFICATION	LOCAL	SAME
NPIAS SERVICE LEVEL	GENERAL AVIATION	SAME
AIRPORT ELEVATION (AMSL)	574.9' AMSL	SAME
AIRPORT REFERENCE POINT (ARP) COORDINATES (NAD 83)	LAT: N 34° 44' 31.7"	LAT: N 34° 44' 28.2033"
	LONG: W 80° 20' 42.7"	LONG: W 80° 20' 47.7628"
AIRPORT MAGNETIC VARIATION (SOURCE: NOAA NCEI)	8° 04' W (DEC. 2020)	3° W PER YEAR
MEAN MAXIMUM DAILY TEMPERATURE	91°F (HOTTEST MONTH: JULY)	SAME
AIRPORT REFERENCE CODE (ARC)	A-1	SAME
AIRPORT CRITICAL AIRCRAFT	CIRRUS SR22	SAME
TAXIWAY LIGHTING	MIRL	SAME
AIRPORT NAVIGATION AIDS (OWNED BY FAA)	RNAV(GPS)	SAME
MISCELLANEOUS FACILITIES (OWNED BY AIRPORT)	LIGHTED WINDCONE, SEG. CIRCLE, PAPI-2, BEACON	SAME
MISCELLANEOUS FACILITIES (OWNED BY FAA)		SAME

EXISTING TERPS APPROACH THRESHOLD SITING SURFACE (TSS) REQUIREMENTS						
RW	A	B	C	D	E	SLOPE
06	200'	400'	3,600'	10,000'	0'	20:1
24	200'	400'	3,600'	10,000'	0'	20:1



EXISTING TERPS DEPARTURE SURFACE REQUIREMENTS						
RW	A	B	C	D	E	SLOPE
06	60'	450'	7,512'	12,152'	6,160'	40:1
24	60'	450'	7,512'	12,152'	6,160'	40:1



APPROACH VISIBILITY MINIMUMS		
	EXISTING	ULTIMATE
RNAV (GPS) RWY 06	1 1/2 MILE	1 MILE
RNAV (GPS) RWY 24	1 MILE	SAME

EXISTING TAXIWAY WIDTH TABLE	
TAXIWAY	WIDTH
RW 06 TURNAROUND	25'
RW 24 ACCESS TO APRON	40'
ACCESS TO TERMINAL	35'

TAXIWAY DATA TABLE			
ITEM	EXISTING / ULTIMATE	APPLICABLE TO PYG	
TAXIWAY LIGHTING	MIRL	YES	
DESIGN STANDARDS BASED ON AIRPLANE DESIGN GROUP (ADG)			
AIRPLANE DESIGN GROUP	I	YES	
TAXIWAY PROTECTION			
TAXIWAY SAFETY AREA	49'	YES	
TAXIWAY OBJECT FREE AREA	89'	YES	
TAXILANE OBJECT FREE AREA	79'	YES	
TAXIWAY SEPARATION			
TAXIWAY CENTERLINE TO PARALLEL TAXIWAY/TAXILANE CENTERLINE	70'	NO	
TAXIWAY CENTERLINE TO FIXED OR MOVEABLE OBJECT	44.5'	YES	
TAXILANE CENTERLINE TO PARALLEL TAXILANE CENTERLINE	64'	NO	
TAXILANE CENTERLINE TO FIXED OR MOVEABLE OBJECT	39.5'	YES	
DESIGN STANDARDS BASED ON TAXIWAY DESIGN GROUP (TDG)			
TAXIWAY DESIGN GROUP	1A	YES	
TAXIWAY AND TAXILANE WIDTH	25'	YES	
TAXIWAY EDGE SAFETY MARGIN (TESM)	5'	YES	
TAXIWAY SHOULDER WIDTH	10'	YES (TURF)	

LEGEND		
ITEM	EXISTING	ULTIMATE
GROUND CONTOURS	1160'	
WOOD AREA		
ROADS (PAVED)		
WATER FEATURE		
FENCE		
AIRPORT BUILDINGS / STRUCTURES		
AIRPORT PAVED AREAS		
AIRPORT PROPERTY LINE (PL)	R	U-R
RUNWAY OBJECT FREE AREA	ROFA	U-ROFA
RUNWAY OBSTACLE FREE ZONE	ROFZ	U-ROFZ
RUNWAY SAFETY AREA	RSA	U-RSA
RUNWAY PROTECTION ZONE	RPZ	U-RPZ
BUILDING RESTRICTION LINE	BRL	U-BRL
APPROACH SURFACE		
DEPARTURE SURFACE		
PART 77 APPROACH SURFACE		
GLIDE PATH QUALIFICATION SURFACE (GQS)		
AIRPORT REFERENCE POINT (ARP)		
NAVAID CRITICAL AREA		
PAVEMENT REMOVAL		

DEVELOPMENT STAGES		
PHASE I	2021-2025	
PHASE II	2026-2030	
PHASE III	2031-2040	
ULTIMATE	2041+	

**FAA DISCLAIMER**  
 THE CONTENTS DO NOT NECESSARILY REFLECT THE OFFICIAL VIEWS OR POLICIES OF THE FAA. THE ACCEPTANCE OF THIS PLAN BY THE FAA DOES NOT IN ANY WAY CONSTITUTE A COMMITMENT ON THE PART OF THE UNITED STATES TO PARTICIPATE IN ANY DEVELOPMENT DEPICTED HEREIN NOR DOES IT INDICATE THAT THE PROPOSED DEVELOPMENT IS ENVIRONMENTALLY ACCEPTABLE IN ACCORDANCE WITH APPROPRIATE PUBLIC LAWS.

- NOTES**
- ALL LATITUDE/LONGITUDE COORDINATES ARE IN NAD 83, AND ALL VERTICAL ELEVATIONS ARE IN NAVD 88.
  - BASE MAPPING SOURCE: UPDATED USING DATA FROM SOUTH CAROLINA AERONAUTICS COMMISSION DRONE FLIGHT, FLOWN OCTOBER 2020.
  - FOR DEPARTURE SURFACE INFORMATION SEE RUNWAY 06-24 DEPARTURE SURFACE - PLAN AND PROFILE (SHEET 12-13).
  - SEE AIRPORT LAYOUT PLAN (SHEET 3) FOR OBJECT FREE ZONE (OFZ) PENETRATIONS.
  - SEE INNER APPROACH SURFACE DRAWING (SHEETS 7-8) AND DEPARTURE SURFACE DRAWINGS (SHEETS 12-13) FOR THRESHOLD SITING SURFACE (TSS) PENETRATIONS.
  - RUNWAY MEETS LINE OF SIGHT REQUIREMENTS.
  - AIRPORT SECURITY FENCING IS 6 FEET TALL WITH THREE STRANDS OF BARBED WIRE.
  - BUILDING RESTRICTION LINE (BRL) IS BASED ON A 0' BUILDING CLEARANCE.
  - EXISTING / ULTIMATE HOLDING POSITION MARKINGS ARE LOCATED 200' OR MORE FROM RUNWAY 06-24 CENTERLINE.

MODIFICATION TO FAA DESIGN STANDARDS			
NO.	MODIFICATION	WAIVER	DATE
	NONE REQUIRED		

**TALBERT, BRIGHT & ELLINGTON**  
 ENGINEERING & PLANNING CONSULTANTS  
 3525 WHITEHALL PARK DRIVE, SUITE 210  
 CHARLOTTE, NORTH CAROLINA 28273  
 PHONE: 704-426-6070 FAX: 704-426-6080  
 NC LICENSE NO. C-1163

DATE	REVISIONS
	1
	2
	3
	4
	5

DESIGNED BY:	TGM
PROJECT ENG.:	JAS
PROJECT NO.:	3509-2001
DRAWN BY:	TGM
CHECKED BY:	JAS
DATE ISSUED:	MAY 14, 2021



**PAGELAND AIRPORT**

**AIRPORT LAYOUT PLAN UPDATE  
 AIRPORT LAYOUT PLAN DATA SHEET**