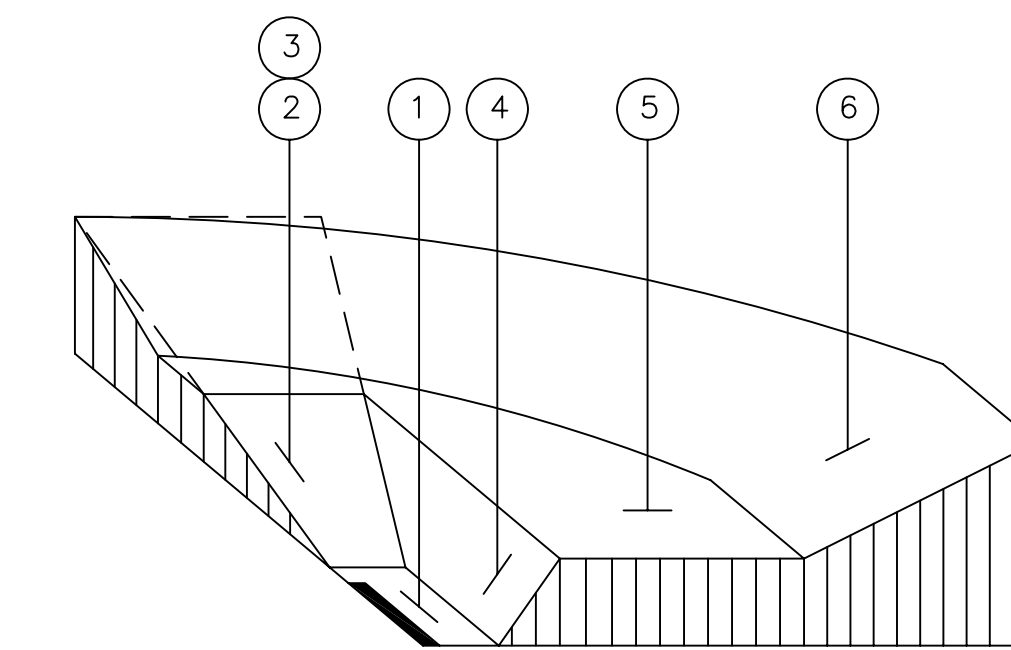
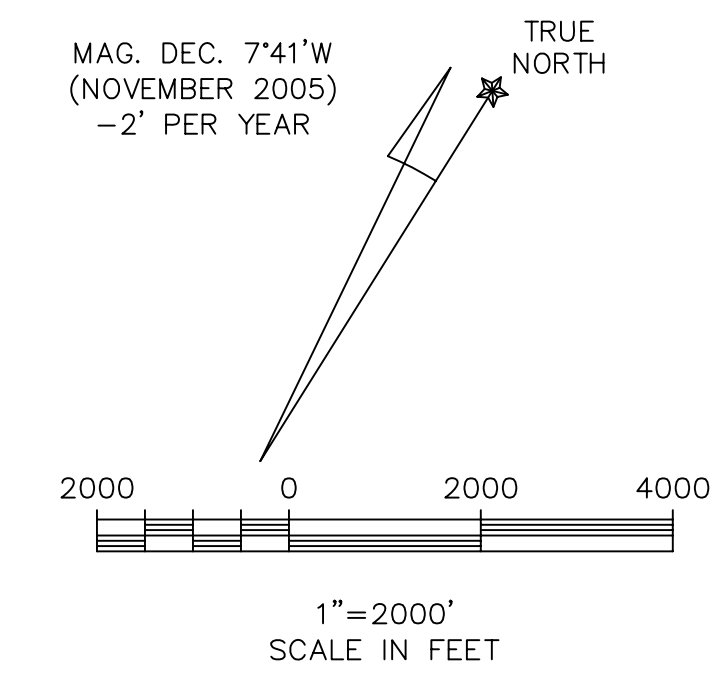


2006



ISOMETRIC SECTIONAL VIEW OF
 CFR PART 77 IMAGINARY SURFACES
 NOT TO SCALE

CFR PART 77 IMAGINARY SURFACES

- | | |
|--|--|
| ① PRIMARY RUNWAY SURFACE
(5,400' X 500'), SAME ELEVATION AS RUNWAY | ④ 7:1 TRANSITIONAL SURFACE |
| ② RUNWAY 24 APPROACH SURFACE
500' X 10,000' X 3,500'
34:1 APPROACH SLOPE | ⑤ HORIZONTAL SURFACE - 150' ABOVE
ESTABLISHED AIRPORT ELEVATION |
| ③ RUNWAY 6 APPROACH SURFACE
500' X 10,000' X 3,500'
34:1 APPROACH SLOPE | ⑥ 20:1 CONICAL SURFACE |

RUNWAY DATA

RUNWAY	ELEVATION	LATITUDE	LONGITUDE	GEODETIC AZIMUTH
6 (U)	138.2'	34°37'04.853"	79°44'28.932"	57°29'55.059"
24 (U)	147.0'	34°37'31.432"	79°43'38.459"	237°30'23.735"

RUNWAY LENGTH (ULTIMATE): 5,000'
 AIRPORT REFERENCE POINT (U) (ARP)
 LATITUDE NORTH (U): 34°37'18.151"
 LONGITUDE WEST (U): 79°44'03.694"
 ESTABLISHED AIRPORT ELEVATION (U): 147.0' MSL

DATA/AIRSPACE NOTES

- ALL EXISTING AND FUTURE STRUCTURES SHOULD REMAIN CLEAR OF THE PLANNED FAR PART 77 IMAGINARY SURFACES FOR RUNWAY 6-24 AT 5,000' LENGTH.
- COUNTY HAS ADOPTED THE MARLBORO COUNTY JETPORT SAFETY AND HEIGHT ZONING ORDINANCE, DATED MARCH 13, 2003.

GENERAL NOTES:

- REFER TO THE INNER PORTION OF THE APPROACH SURFACE PLAN AND PROFILE VIEWS FOR CLOSE-IN OBSTRUCTIONS.
- GEODETIC DATA FOR RUNWAY PER SOUTH CAROLINA DIVISION OF AERONAUTICS. RUNWAY ELEVATIONS PER CERTIFIED SURVEY BY HANOVER DESIGN SERVICES 7/11/02. HORIZONTAL DATUM: NAD83. VERTICAL DATUM: NAVD88 (MSL).

REV. NO	DESCRIPTION	DATE

**MARLBORO COUNTY JETPORT (BBP)
 H.E. AVENT FIELD
 BENNETTSVILLE, SOUTH CAROLINA
 AIRSPACE DRAWING**

Approved By

Title

Date

MARLBORO COUNTY
 SOUTH CAROLINA

Date JANUARY 2006

Scale 1"=2,000'

Drawn KAC

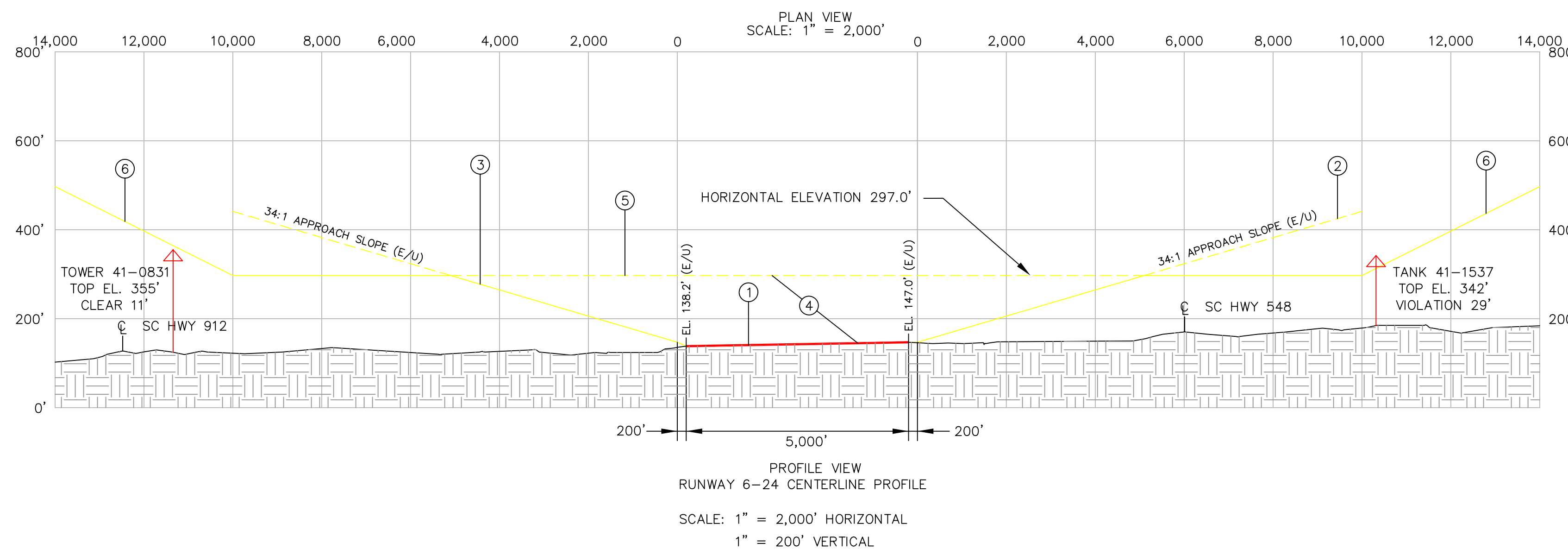
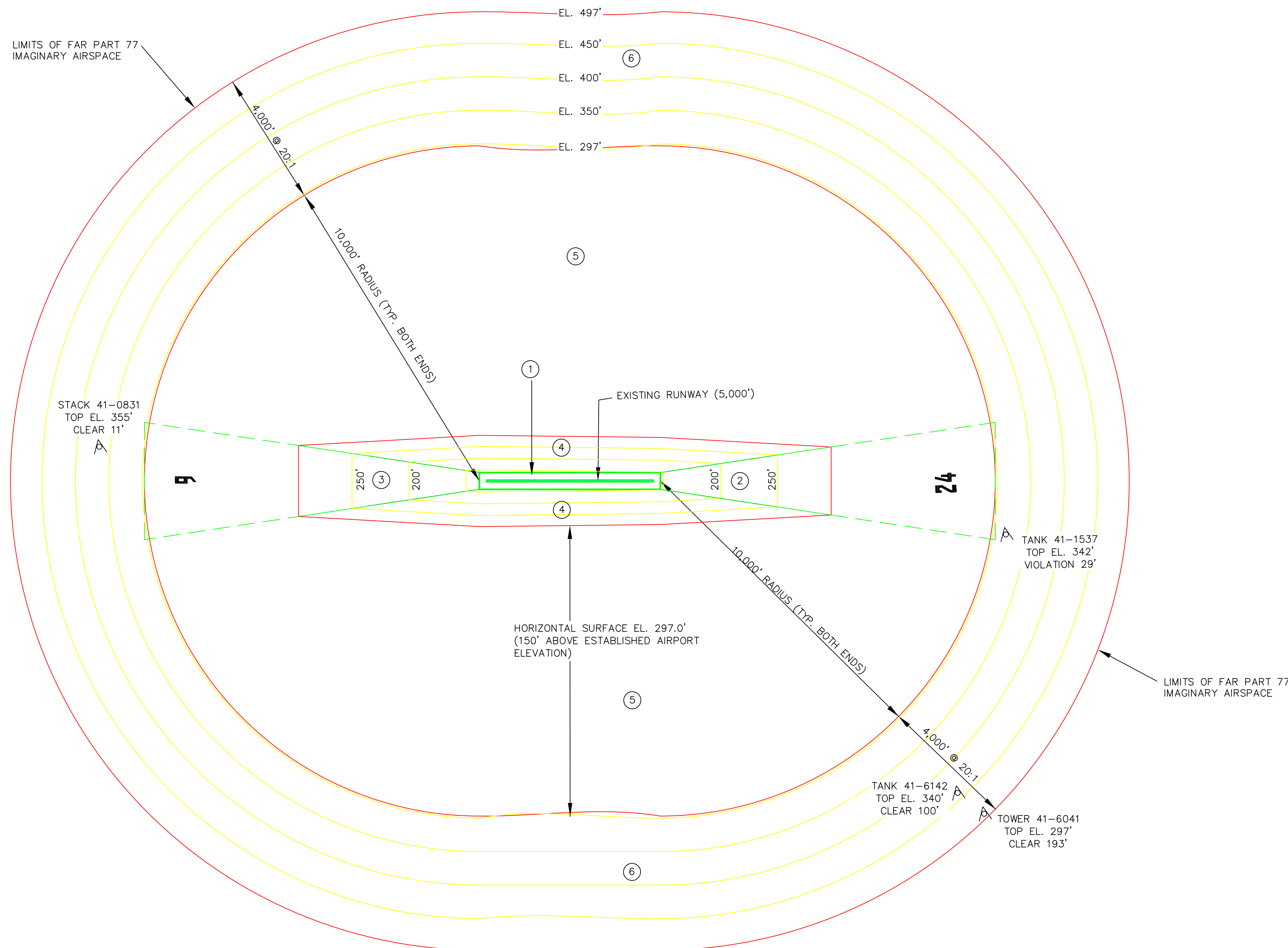
Checked JMM/LSM

Project No. 3214-0503

Sheet No.

2

Of



PROFILE VIEW
 RUNWAY 6-24 CENTERLINE PROFILE
 SCALE: 1" = 2,000' HORIZONTAL
 1" = 200' VERTICAL