

OBSTRUCTION TABLE

| ID | DESCRIPTION | TOP ELEVATION (MSL) | AIRSPACE SURFACE IMPACTED | PENETRATION | RESOLUTION |
|----|----------------------|---------------------|---------------------------|-------------|-------------------|
| P1 | ANTENNA | 197' | PART 77 HORIZONTAL | 1' | MARK OR LIGHT |
| P2 | ROD ON CONTROL TOWER | 233' | PART 77 HORIZONTAL | 37' | CURRENTLY LIGHTED |
| | | | | | |
| | | | | | |
| | | | | | |



CHARLESTON INTERNATIONAL AIRPORT
 CHARLESTON, SOUTH CAROLINA

AIRPORT AIRSPACE

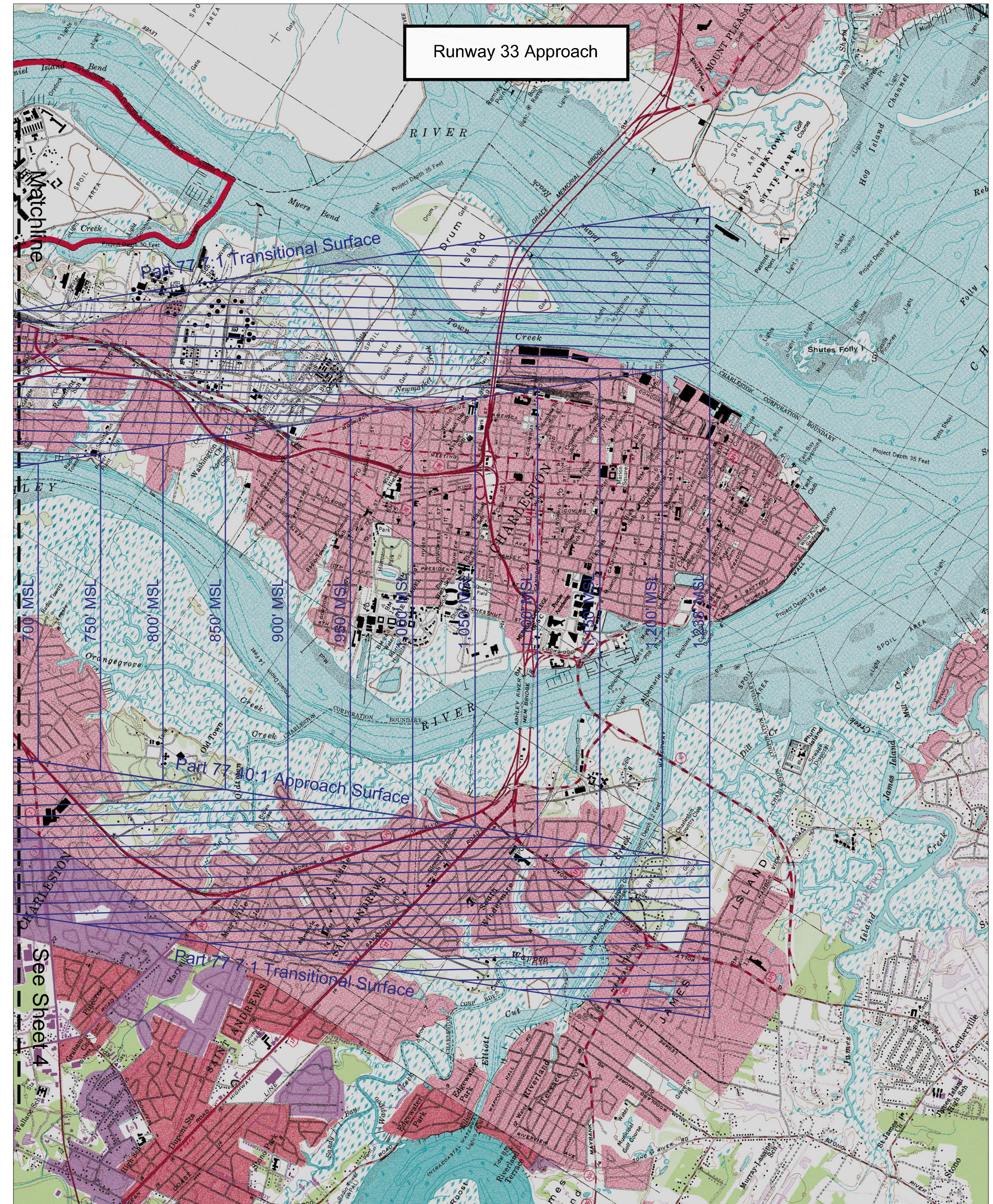
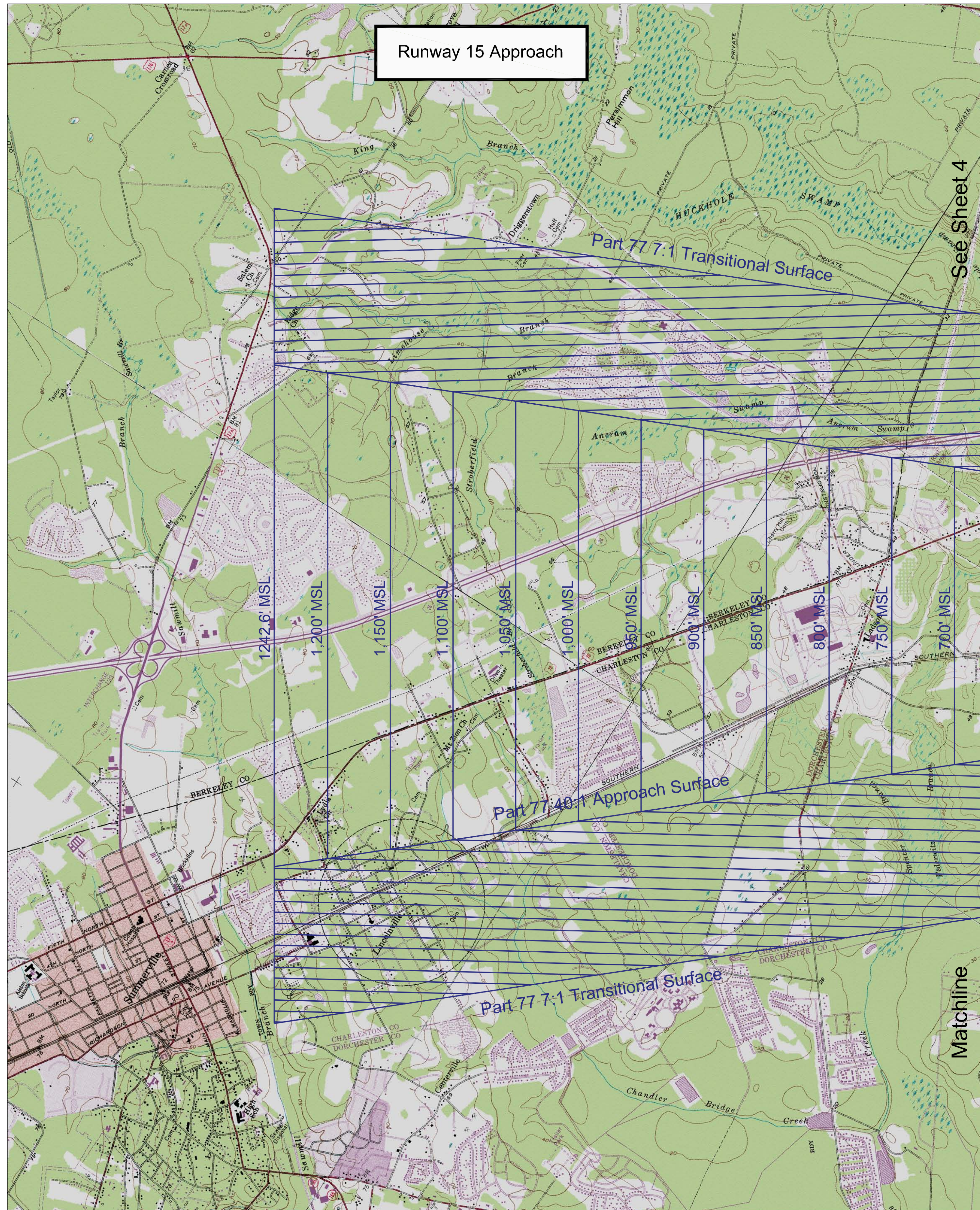
FAA DISCLAIMER:
 The contents do not necessarily reflect the official views or policy of the FAA. Acceptance of this plan by the FAA does not in any way constitute a commitment on the part of the United States to participate in any development depicted therein nor does it indicate that the proposed development is environmentally acceptable in accordance with appropriate public laws.

APPROVED BY AIRPORT SPONSOR:
 Signature _____
 Title _____
 Date _____

| REVISION HISTORY | | | |
|------------------|------|----|-------------|
| NO. | DATE | BY | DESCRIPTION |
| | | | |
| | | | |

Magnification: 7" = 26' W
 November 2010
 GRAPHICAL SCALE IN FEET
 0 2,000

DRAWN BY: MDT
CHECKED BY: SRR
PREPARED BY: Ricondo & Associates, Inc.
DATE: August 2011
SHEET 4



CHARLESTON INTERNATIONAL AIRPORT
CHARLESTON, SOUTH CAROLINA

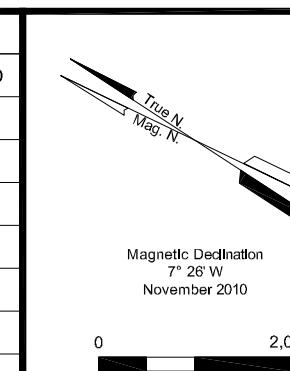
AIRPORT AIRSPACE

FAA DISCLAIMER:
The contents do not necessarily reflect the official views or policy of the FAA. Acceptance of this plan by the FAA does not in any way constitute a commitment on the part of the United States to participate in any development depicted therein nor does it indicate that the proposed development is environmentally acceptable in accordance with appropriate public laws.

APPROVED BY AIRPORT SPONSOR:

Signature _____
Title _____
Date _____

| REVISION HISTORY | | | |
|------------------|------|----|-------------|
| NO. | DATE | BY | DESCRIPTION |
| | | | |
| | | | |
| | | | |



DRAWN BY: MDT
CHECKED BY: SRR
PREPARED BY: Ricondo & Associates, Inc.
DATE: August 2011
SHEET 5