

Runway 18-36 Extended Centerline Profile
Horizontal Scale: 1" = 2,000'
Vertical Scale: 1" = 200'

- Notes:**
1. Aerodrome and aerodrome survey performed November 2019. Boundary survey performed 2021. Data was surveyed conform with AC 150/5001-118 standards. All coordinates are provided using NAD83(2011) Horizontal Datum and NAVD83 Vertical datum. Topographic information oriented horizontally to FACS MYR A and SACS, AM 2 AZ MK RESET and MYR AFR. All elevations are based on the datum provided in these titles.
 2. All dimensions shown are horizontal surface measurements.
 3. The nearest section corner to airport property is the southeast corner of USGS 10 Topog. Map, Myrtle Beach Quadrangle, 7.5 minute Series. The section corner is located approximately 7.5 miles south of the airport reference point.
 4. Profile View for Runway 18-36 Centerline is shown on Sheet 7 of 15, "Runway Centerline Profile".
 5. Elevation information for Traverse Ways may be found on Sheets 8 and 9 of 15, "Inner Portion of the Approach Surface Drawing".
 6. Ground elevation for those objects located beyond the extent of the USGS 10 Topog. Map, Myrtle Beach Quadrangle, 7.5 minute Series, was estimated using the USGS National Elevation Dataset (NED) 10 arc-second Digital Elevation Model (DEM).
 7. For clarity purposes, construction items have been grouped in tree and building clusters. Only the deepest penetration to the Part 77 surface has been labeled on the plan view among clusters. Remaining obstructions have been depicted on the plan view, but not labeled.
 8. All obstructions are subject to further analysis by the FAA. Final disposition to be determined by the FAA.

City of Myrtle Beach Planning Jurisdiction

For provisions concerning airport subdivision regulations, zoning, and development standards, reference Appendix A "Zoning", of the Code of Ordinances of the City of Myrtle Beach, S.C.:

Article 2 - Definitions
 Article 9 - Landmarking and Tree Protection
 Article 12 - Supplemental Provisions
 Article 14 - Zoning Districts
 Article 15 - Conditional and Accessory Uses and Special Exceptions
 Article 16 - Area, Height and Dimensional Requirements
 Article 18 - Overlay Zones

Code of Ordinances of the City of Myrtle Beach, S.C. Appendix A:

Article 16, Section 1602 - Requirements

Article 16, Section 1602.A - Requirements Superseded

Article 16, Section 1603.B - Requirements for Residential Zoning Districts

Article 16, Section 1603.C - Requirements for Commercial and Other Zoning Districts

Article 16, Section 1603.F - Precision Instrument Runway Approach Zone

Article 16, Section 1603.G - Outer Horizontal Zone

Article 18, Section 1803.F.4 - Conical Zone

Article 18, Section 1803.F.5 - Outer Horizontal Zone

14 CFR Part 77 Horizontal Surface Obstruction Table

Object ID	Latitude	Longitude	Description	Object Top Elev. (Feet MSL)	Ground Elev. at Point (Feet MSL)	Object Height (Feet AGL)	Part 77 Surface Elev. at Point (Feet MSL)	Part 77 Surface Penet. (Feet)	Dispo.
H01	N 33° 40' 29.76"	W 78° 54' 53.81"	Antenna	181.44	13.19	168.25	175.05	6.39	Light
H02	N 33° 40' 29.78"	W 78° 54' 53.81"	Antenna	233.84	12.42	221.42	175.05	58.79	Light
H03	N 33° 39' 45.15"	W 78° 54' 48.25"	Antenna	194.28	8.03	186.24	175.05	19.21	Light
H04	N 33° 40' 20.42"	W 78° 54' 04.18"	Building	207.98	18.87	189.11	175.05	32.83	Light
H05	N 33° 40' 20.48"	W 78° 54' 04.18"	Building	207.88	11.14	196.74	175.05	32.83	Light
H06	N 33° 40' 20.31"	W 78° 54' 04.22"	Building	207.88	10.55	197.33	175.05	32.83	Light
H07	N 33° 40' 20.73"	W 78° 54' 04.26"	Building	207.88	10.86	197.02	175.05	32.83	Light
H08	N 33° 40' 20.73"	W 78° 54' 04.26"	Building	227.05	12.30	214.75	175.05	52.00	Light
H09	N 33° 40' 20.68"	W 78° 54' 04.41"	Building	227.05	10.48	216.57	175.05	52.00	Light
H10	N 33° 40' 20.68"	W 78° 54' 04.41"	Building	207.88	10.54	197.34	175.05	32.83	Light
H11	N 33° 40' 20.12"	W 78° 54' 04.54"	Building	207.88	10.86	197.02	175.05	32.83	Light
H12	N 33° 40' 20.05"	W 78° 54' 04.63"	Building	207.88	10.98	196.90	175.05	32.83	Light
H13	N 33° 40' 20.05"	W 78° 54' 04.70"	Building	207.88	11.21	196.67	175.05	32.83	Light
H14	N 33° 40' 21.13"	W 78° 54' 04.81"	Building	196.31	12.78	183.53	175.05	21.56	Light
H15	N 33° 40' 21.07"	W 78° 54' 04.81"	Building	227.05	10.30	216.75	175.05	52.00	Light
H16	N 33° 40' 20.98"	W 78° 54' 04.90"	Building	226.80	12.61	214.19	175.05	51.75	Light
H17	N 33° 40' 20.92"	W 78° 54' 05.01"	Building	226.80	12.92	213.88	175.05	51.75	Light
H18	N 33° 40' 21.68"	W 78° 54' 05.52"	Building	227.05	18.02	209.03	175.05	52.00	Light
H19	N 33° 40' 20.58"	W 78° 54' 05.40"	Building	226.80	15.17	211.63	175.05	51.75	Light
H20	N 33° 40' 20.58"	W 78° 54' 05.50"	Building	226.80	15.45	211.35	175.05	51.75	Light
H21	N 33° 40' 20.58"	W 78° 54' 06.17"	Building	227.05	17.94	209.11	175.05	52.00	Light
H22	N 33° 40' 08.17"	W 78° 54' 20.99"	Building	193.42	10.43	182.99	175.05	18.37	Light
H23	N 33° 40' 08.05"	W 78° 54' 20.92"	Building	193.42	10.56	182.86	175.05	18.37	Light
H24	N 33° 40' 07.97"	W 78° 54' 20.92"	Building	193.42	10.56	182.86	175.05	18.37	Light
H25	N 33° 40' 07.96"	W 78° 54' 20.92"	Building	193.42	10.46	182.96	175.05	18.37	Light
H26	N 33° 40' 08.01"	W 78° 54' 20.93"	Building	193.42	10.54	182.88	175.05	18.37	Light
H27	N 33° 40' 07.81"	W 78° 54' 20.92"	Building	193.42	10.39	183.03	175.05	18.37	Light
H28	N 33° 40' 07.83"	W 78° 54' 20.94"	Building	193.42	10.46	182.96	175.05	18.37	Light
H29	N 33° 40' 07.78"	W 78° 54' 20.81"	Building	193.42	12.73	180.69	175.05	18.37	Light
H30	N 33° 40' 07.66"	W 78° 54' 20.91"	Building	200.83	12.71	188.12	175.05	25.58	Light
H31	N 33° 40' 07.42"	W 78° 54' 20.99"	Building	193.42	10.26	183.16	175.05	18.37	Light
H32	N 33° 40' 07.42"	W 78° 54' 20.99"	Building	193.42	10.26	183.16	175.05	18.37	Light
H33	N 33° 40' 07.41"	W 78° 54' 21.01"	Building	193.42	10.26	183.16	175.05	18.37	Light
H34	N 33° 40' 07.41"	W 78° 54' 21.02"	Building	193.42	10.30	183.14	175.05	30.79	Light
H35	N 33° 40' 08.27"	W 78° 54' 21.02"	Building	193.42	12.26	181.16	175.05	18.37	Light
H36	N 33° 40' 08.53"	W 78° 54' 21.12"	Building	205.36	12.69	192.67	175.05	30.31	Light
H37	N 33° 40' 08.44"	W 78° 54' 21.14"	Building	200.83	12.58	188.25	175.05	25.58	Light
H38	N 33° 40' 07.25"	W 78° 54' 21.21"	Building	193.42	10.27	183.15	175.05	18.37	Light
H39	N 33° 40' 07.25"	W 78° 54' 21.18"	Building	200.83	12.68	188.15	175.05	25.58	Light
H40	N 33° 40' 07.27"	W 78° 54' 21.23"	Building	193.42	10.27	183.05	175.05	18.37	Light
H41	N 33° 40' 07.19"	W 78° 54' 21.28"	Building	193.42	10.26	183.16	175.05	18.37	Light
H42	N 33° 40' 07.21"	W 78° 54' 21.30"	Building	193.42	10.26	183.16	175.05	18.37	Light
H43	N 33° 40' 07.07"	W 78° 54' 21.43"	Building	193.42	10.23	183.19	175.05	18.37	Light

14 CFR Part 77 Horizontal Surface Obstruction Table

Object ID	Latitude	Longitude	Description	Object Top Elev. (Feet MSL)	Ground Elev. at Point (Feet MSL)	Object Height (Feet AGL)	Part 77 Surface Elev. at Point (Feet MSL)	Part 77 Surface Penet. (Feet)	Dispo.
H44	N 33° 40' 07.89"	W 78° 54' 21.54"	Building	193.42	12.19	181.23	175.05	18.37	Light
H45	N 33° 40' 08.00"	W 78° 54' 21.67"	Building	193.42	12.56	180.86	175.05	18.37	Light
H46	N 33° 40' 07.95"	W 78° 54' 21.73"	Building	201.13	12.05	189.08	175.05	26.08	Light
H47	N 33° 40' 07.98"	W 78° 54' 21.77"	Building	200.83	12.83	188.00	175.05	25.58	Light
H48	N 33° 40' 07.98"	W 78° 54' 21.84"	Building	206.79	12.60	194.19	175.05	31.74	Light
H49	N 33° 40' 07.98"	W 78° 54' 21.84"	Building	206.79	12.60	194.19	175.05	31.74	Light
H50	N 33° 40' 07.98"	W 78° 54' 21.93"	Building	206.11	12.60	193.51	175.05	31.06	Light
H51	N 33° 40' 07.78"	W 78° 54' 22.01"	Building	206.11	12.62	189.49	175.05	25.58	Light
H52	N 33° 40' 07.78"	W 78° 54' 22.14"	Building	193.42	10.62	182.80	175.05	18.37	Light
H53	N 33° 40' 07.42"	W 78° 54' 23.94"	Building	196.41	10.22	186.19	175.05	15.36	Light
H54	N 33° 40' 04.77"	W 78° 54' 24.12"	Building	196.41	10.23	186.18	175.05	15.36	Light
H55	N 33° 40' 04.78"	W 78° 54' 24.12"	Building	196.41	10.15	186.26	175.05	15.36	Light
H56	N 33° 40' 05.57"	W 78° 54' 24.11"	Building	196.41	12.78	173.65	175.05	15.36	Light
H57	N 33° 40' 05.49"	W 78° 54' 24.81"	Building	196.41	12.78	183.63	175.05	21.56	Light
H58	N 33° 40' 05.49"	W 78° 54' 24.87"	Building	196.31	12.78	183.53	175.05	21.26	Light
H59	N 33° 40' 05.11"	W 78° 54' 24.89"	Building	196.41	12.34	184.07	175.05	15.36	Light
H60	N 33° 40' 05.41"	W 78° 54' 24.91"	Building	196.12	12.78	183.34	175.05	23.07	Light
H61	N 33° 40' 05.30"	W 78° 54' 24.91"	Building	196.41	12.89	177.72	175.05	15.36	Light
H62	N 33° 40' 05.30"	W 78° 54' 25.03"	Building	196.41	12.70	177.71	175.05	15.36	Light
H63	N 33° 40' 04.94"	W 78° 54' 25.09"	Building	207.31	12.38	194.93	175.05	32.28	Light
H64	N 33° 40' 03.93"	W 78° 54' 25.15"	Building	196.41	10.24	186.17	175.05	15.36	Light
H65	N 33° 40' 03.93"	W 78° 54' 25.16"	Building	196.41	10.33	186.08	175.05	15.36	Light
H66	N 33° 40' 03.90"	W 78° 54' 25.20"	Building	207.31	12.75	194.56	175.05	32.56	Light
H67	N 33° 40' 03.78"	W 78° 54' 25.33"	Building	196.41	10.24	186.17	175.05	15.36	Light
H68	N 33° 40' 04.78"	W 78° 54' 25.34"	Building	207.31	12.42	194.89	175.05	32.26	Light
H69	N 33° 40' 04.78"	W 78° 54' 25.33"	Building	214.40	12.76	201.64	175.05	39.35	Light
H70	N 33° 40' 04.78"	W 78° 54' 25.50"	Building	206.57	12.78	193.79	175.05	31.52	Light
H71	N 33° 40' 04.07"	W 78° 54' 25.54"	Building	196.41	12.41	184.00	175.05	15.36	Light
H72	N 33° 40' 04.09"	W 78° 54' 25.68"	Building	196.41	12.77	177.84	175.05	15.36	Light
H73	N 33° 40' 04.06"	W 78° 54' 25.79"	Building	197.31	12.77	184.54	175.05	22.07	Light
H74	N 33° 40' 04.84"	W 78° 54' 25.83"	Building	197.12	12.86	184.26	175.05	22.07	Light
H75	N 33° 40' 04.51"	W 78° 54' 25.99"	Building	197.48	12.88	184.60	175.05	22.43	Light
H76	N 33° 40' 04.51"	W 78° 54' 26.07"	Building	196.41	12.60	179.81	175.05	15.36	Light
H77	N 33° 40' 51.97"	W 78° 54' 26.08"	Building	177.01	9.51	167.50	175.05	1.96	Light
H78	N 33° 40' 52.08"	W 78° 54' 26.20"	Building	177.39	9.83	167.56	175.05	2.54	Light
H79	N 33° 40' 51.73"	W 78° 54' 26.39"	Building	178.81	9.53	169.28	175.05	2.96	Light
H80	N 33° 40' 49.42"	W 78° 54' 26.40"	Building	177.63	9.81	167.82	175.05	2.58	Light
H81	N 33° 40' 49.40"	W 78° 54' 26.42"	Building	206.45	8.01	198.45	175.05	31.40	Light
H82	N 33° 40' 49.47"	W 78° 54' 26.42"	Building	206.45	8.23	197.92	175.05	31.40	Light
H83	N 33° 40' 49.14"	W 78° 54' 26.58"	Building	206.45	8.58	198.17	175.05	31.40	Light
H84	N 33° 40' 49.19"	W 78° 54' 26.64"	Building	206.45	8.44	198.01	175.05	31.40	Light
H85	N 33° 40' 49.21"	W 78° 54' 21.30"	Building	206.45	8.29	198.16	175.05	31.40	Light
H86	N 33° 40' 48.87"	W 78° 54' 43.07"	Building	206.45	8.43	198.02	175.05	31.40	Light

14 CFR Part 77 Horizontal Surface Obstruction Table

Object ID	Latitude	Longitude	Description	Object Top Elev. (Feet MSL)	Ground Elev. at Point (Feet MSL)	Object Height (Feet AGL)	Part 77 Surface Elev. at Point (Feet MSL)	Part 77 Surface Penet. (Feet)	Dispo.
H87	N 33° 39' 50.11"	W 78° 54' 43.10"	Building	202.46	10.55	191.91	175.05	27.41	Light
H88	N 33° 39' 48.57"	W 78° 54' 43.20"	Building	206.45	8.28	198.17	175.05		

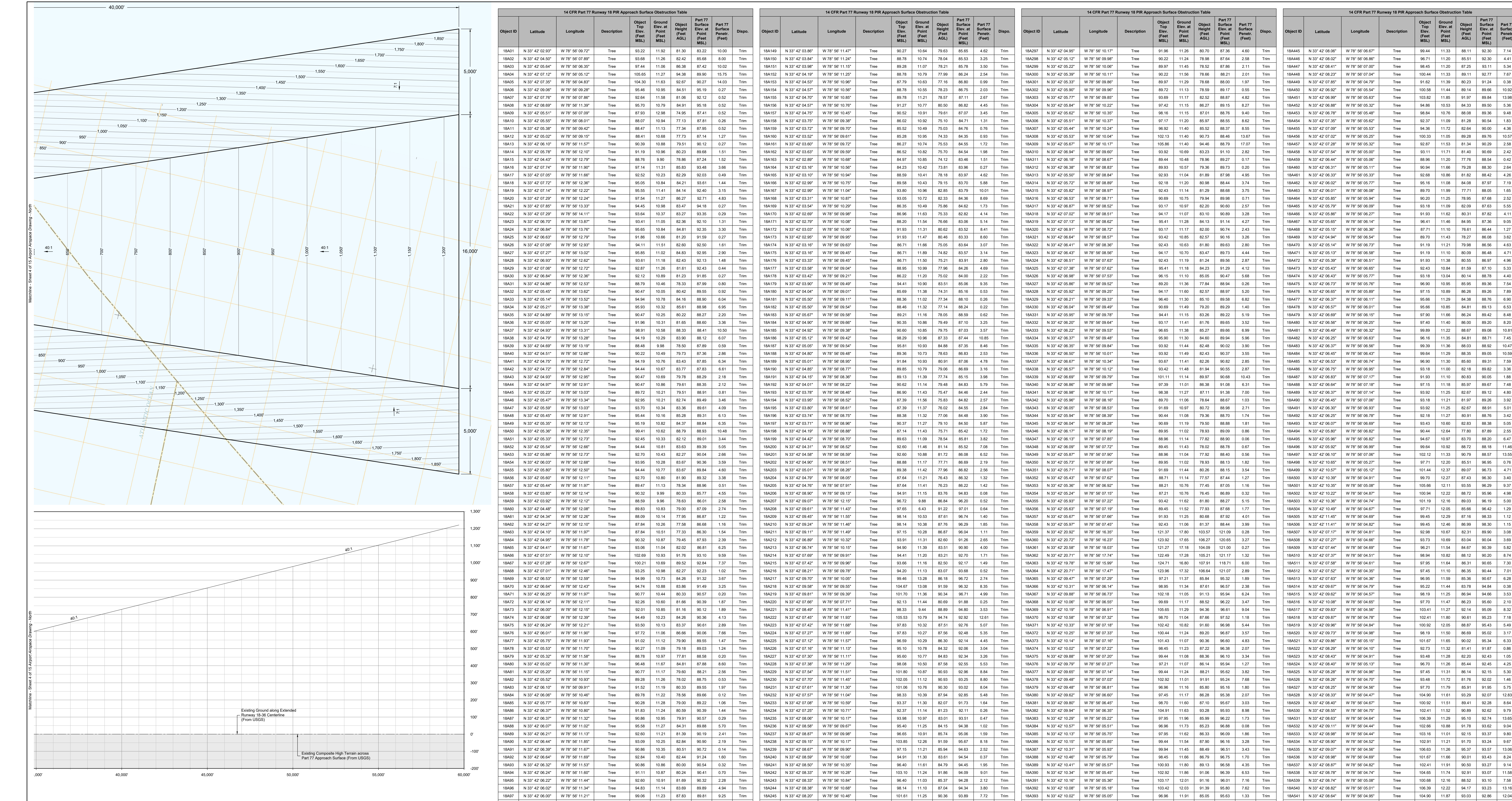


Table containing 14 CFR Part 77 Runway 16 PR Approach Surface Obstruction data. Columns include Object ID, Latitude, Longitude, Description, Object Top (Feet MSL), Object Elev. at (Feet AGL), Object Height (Feet AGL), Part 77 (Feet MSL), Part 77 (Feet AGL), and Dispo. The table lists numerous obstruction points across the runway area.



Myrtle Beach International Airport



South Carolina Aeronautics Commission



AP No. 14-CFR-005-038-018

Drawn: JPS & H.C.

Checked: TMB

Approved: AEP

Date: 06/09/2023

Sheet No. 6 of 15

Scale: N/A

Airport Airspace Drawing - Data

Myrtle Beach International Airport (MYR)

Horry County, South Carolina



AP No. 14-CFR-005-038-018

Drawn: JPS & H.C.

Checked: TMB

Approved: AEP

Date: 06/09/2023

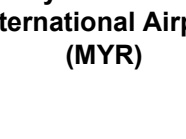
Sheet No. 6 of 15

Scale: N/A

Airport Airspace Drawing - Data

Myrtle Beach International Airport (MYR)

Horry County, South Carolina



AP No. 14-CFR-005-038-018

Drawn: JPS & H.C.

Checked: TMB

Approved: AEP

Date: 06/09/2023

Sheet No. 6 of 15

Scale: N/A

Table with 10 columns: Object ID, Latitude, Longitude, Description, Object Top Elev. (Feet MSL), Ground Elev. (Feet MSL), Object Height (Feet AGL), Object Height (Feet AGL), Part 77 Surface (Feet MSL), Part 77 Surface (Feet MSL), Dispo.

Table with 10 columns: Object ID, Latitude, Longitude, Description, Object Top Elev. (Feet MSL), Ground Elev. (Feet MSL), Object Height (Feet AGL), Object Height (Feet AGL), Part 77 Surface (Feet MSL), Part 77 Surface (Feet MSL), Dispo.

Table with 10 columns: Object ID, Latitude, Longitude, Description, Object Top Elev. (Feet MSL), Ground Elev. (Feet MSL), Object Height (Feet AGL), Object Height (Feet AGL), Part 77 Surface (Feet MSL), Part 77 Surface (Feet MSL), Dispo.

Table with 10 columns: Object ID, Latitude, Longitude, Description, Object Top Elev. (Feet MSL), Ground Elev. (Feet MSL), Object Height (Feet AGL), Object Height (Feet AGL), Part 77 Surface (Feet MSL), Part 77 Surface (Feet MSL), Dispo.

Table with 10 columns: Object ID, Latitude, Longitude, Description, Object Top Elev. (Feet MSL), Ground Elev. (Feet MSL), Object Height (Feet AGL), Object Height (Feet AGL), Part 77 Surface (Feet MSL), Part 77 Surface (Feet MSL), Dispo.

Table with 10 columns: Object ID, Latitude, Longitude, Description, Object Top Elev. (Feet MSL), Ground Elev. (Feet MSL), Object Height (Feet AGL), Object Height (Feet AGL), Part 77 Surface (Feet MSL), Part 77 Surface (Feet MSL), Dispo.

Table with 10 columns: Object ID, Latitude, Longitude, Description, Object Top Elev. (Feet MSL), Ground Elev. (Feet MSL), Object Height (Feet AGL), Object Height (Feet AGL), Part 77 Surface (Feet MSL), Part 77 Surface (Feet MSL), Dispo.

Table with 10 columns: Object ID, Latitude, Longitude, Description, Object Top Elev. (Feet MSL), Ground Elev. (Feet MSL), Object Height (Feet AGL), Object Height (Feet AGL), Part 77 Surface (Feet MSL), Part 77 Surface (Feet MSL), Dispo.

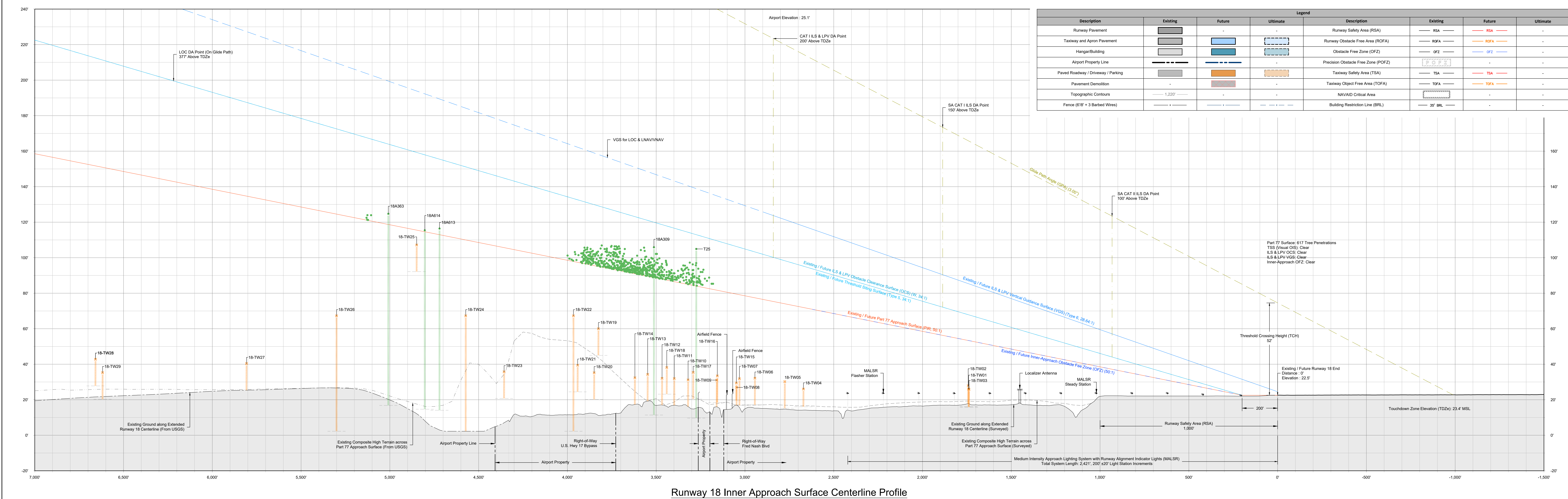
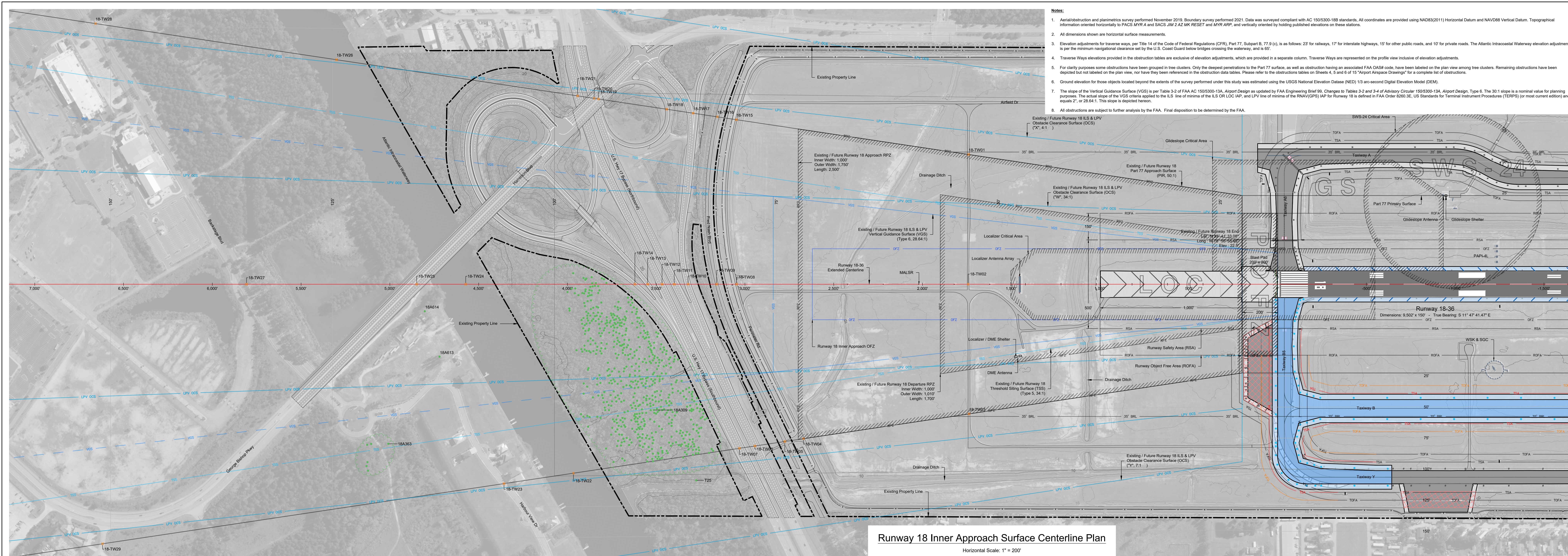
Table with 10 columns: Object ID, Latitude, Longitude, Description, Object Top Elev. (Feet MSL), Ground Elev. (Feet MSL), Object Height (Feet AGL), Object Height (Feet AGL), Part 77 Surface (Feet MSL), Part 77 Surface (Feet MSL), Dispo.

Table with 10 columns: Object ID, Latitude, Longitude, Description, Object Top Elev. (Feet MSL), Ground Elev. (Feet MSL), Object Height (Feet AGL), Object Height (Feet AGL), Part 77 Surface (Feet MSL), Part 77 Surface (Feet MSL), Dispo.

Table with 10 columns: Object ID, Latitude, Longitude, Description, Object Top Elev. (Feet MSL), Ground Elev. (Feet MSL), Object Height (Feet AGL), Object Height (Feet AGL), Part 77 Surface (Feet MSL), Part 77 Surface (Feet MSL), Dispo.

Table with 10 columns: Object ID, Latitude, Longitude, Description, Object Top Elev. (Feet MSL), Ground Elev. (Feet MSL), Object Height (Feet AGL), Object Height (Feet AGL), Part 77 Surface (Feet MSL), Part 77 Surface (Feet MSL), Dispo.

Vertical text on the right side of the page, including 'FINAL DRAFT' and other project information.



14 CFR Part 77 Runway 18 Inner Approach Surface Obstruction Table

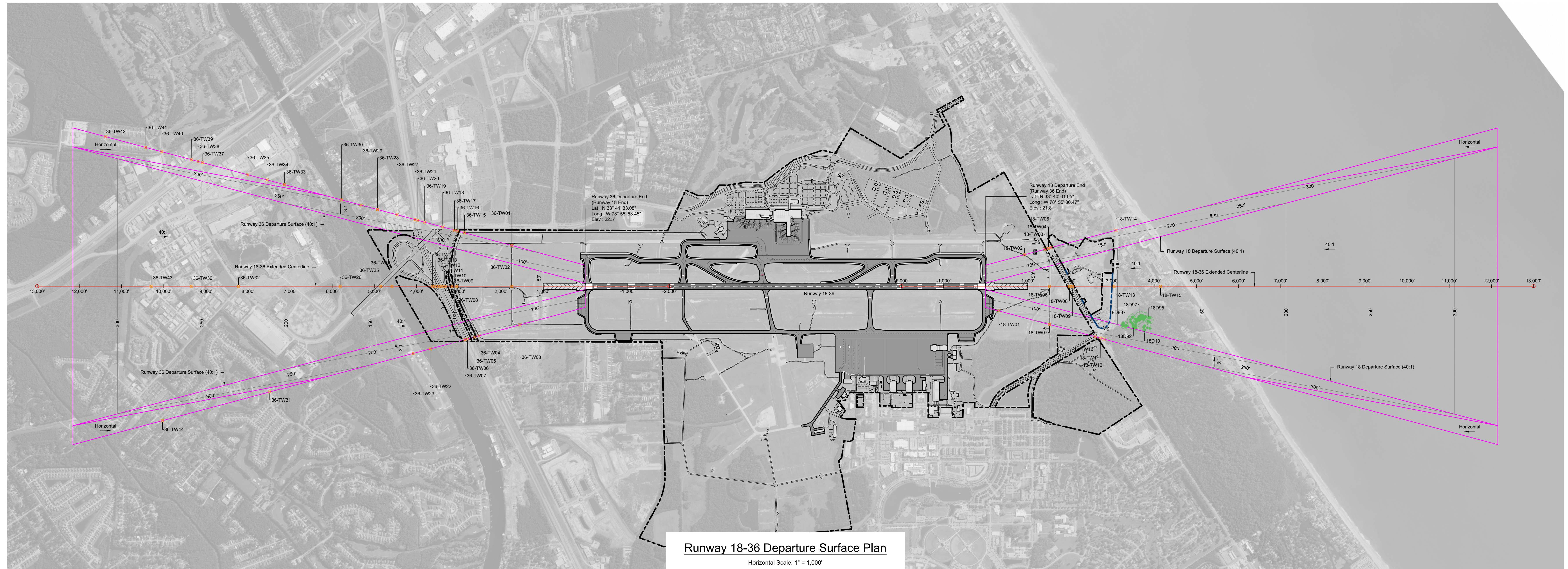
Object ID	Latitude	Longitude	Description	Object Top Elevation (Feet MSL)	Ground Elevation at Point (Feet MSL)	Object Height (Feet AGL)	Part 77 Surface Elevation at Point (Feet MSL)	Part 77 Surface Penetration (Feet)	TSS Elevation at Point (Feet MSL)	TSS Penetration (Feet)	ILS & LPV OCS Elevation at Point (Feet MSL)	ILS & LPV OCS Penetration (Feet)	ILS & LPV VGS Elevation at Point (Feet MSL)	ILS & LPV VGS Penetration (Feet)	Disposition
18A309	N 33° 42' 06.61"	W 78° 56' 10.17"	Tree	105.86	11.40	94.46	88.79	17.07	-	-	167.42	-61.56	-	-	Trim
18A363	N 33° 42' 18.78"	W 78° 56' 15.99"	Tree	124.71	16.80	107.91	118.71	6.00	163.97	-39.26	245.48	-120.77	-	-	Trim
18A613	N 33° 42' 17.88"	W 78° 56' 09.00"	Tree	116.40	14.06	102.34	112.94	3.46	156.40	-39.00	156.40	-39.00	-	-	Trim
18A614	N 33° 42' 16.30"	W 78° 56' 06.84"	Tree	115.40	14.87	100.53	114.60	0.80	157.93	-42.53	157.93	-42.53	-	-	Trim
T25	N 33° 42' 02.90"	W 78° 56' 14.18"	Tree	104.92	9.67	95.25	104.79	0.13	-	-	203.99	-148.67	-	-	Trim

14 CFR Part 77 Runway 18 Inner Approach Surface Traverse Ways Table

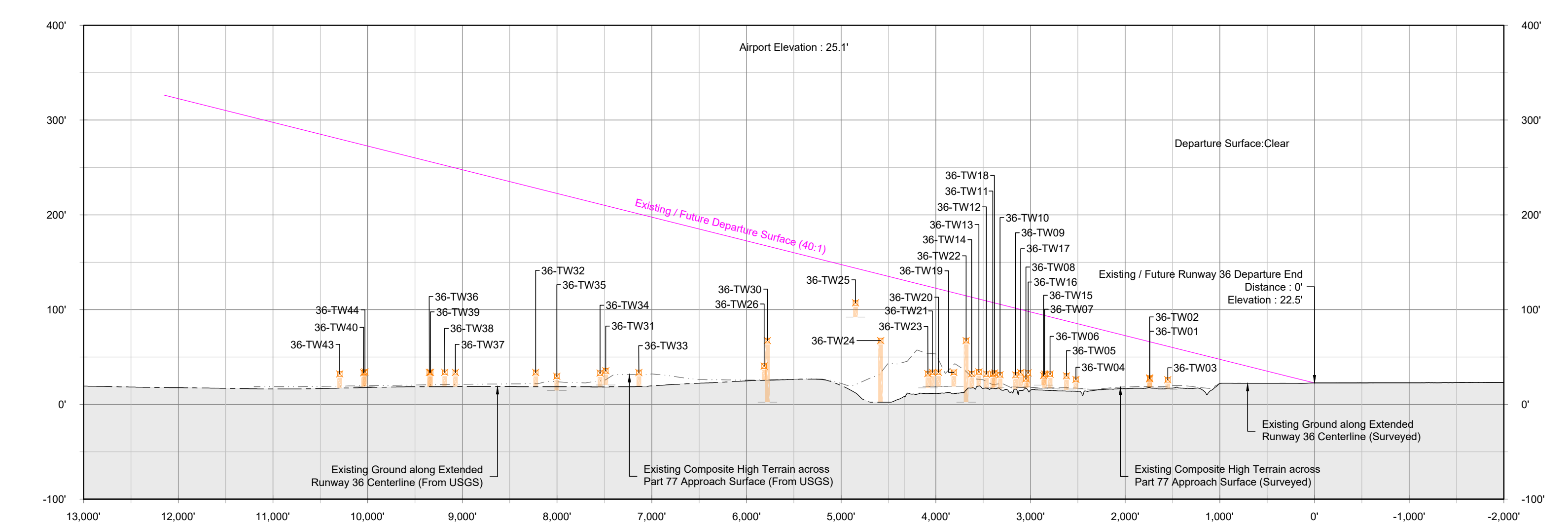
Object ID	Latitude	Longitude	Description	Ground Elevation (Feet MSL)	Elevation Adjustment (Feet)	Traverse Way Elevation at Point (Feet MSL)	Part 77 Surface Penetration (Feet)	Part 77 Surface Elevation at Point (Feet MSL)	TSS Elevation at Point (Feet MSL)	TSS Penetration (Feet)	ILS & LPV OCS Elevation at Point (Feet MSL)	ILS & LPV OCS Penetration (Feet)	ILS & LPV VGS Elevation at Point (Feet MSL)	ILS & LPV VGS Penetration (Feet)	Disposition
18-TW01	N 33° 41' 51.42"	W 78° 55' 49.19"	Airfield Drive	16.09	10	26.09	53.35	-27.26	-	-	136.75	-110.66	-	-	-
18-TW02	N 33° 41' 49.90"	W 78° 55' 57.67"	Airfield Drive	17.87	10	27.87	53.40	-25.52	67.92	-40.04	67.92	-40.04	65.40	-57.53	-
18-TW03	N 33° 41' 48.44"	W 78° 55' 58.12"	Airfield Drive	15.79	10	25.79	53.30	-27.51	-	-	136.61	-110.82	-	-	-
18-TW04	N 33° 41' 57.57"	W 78° 56' 10.00"	Perimeter Road	16.02	10	26.02	51.95	-45.93	-	-	136.81	-104.89	-	-	-
18-TW05	N 33° 41' 26.16"	W 78° 56' 10.44"	Fred Nash Blvd	15.21	15	30.21	74.05	-43.85	-	-	136.70	-106.69	-	-	-
18-TW06	N 33° 41' 59.70"	W 78° 56' 11.14"	U.S. Hwy 17 Bypass (Northbound)	17.12	15	32.12	77.42	-45.30	-	-	136.65	-104.53	-	-	-
18-TW07	N 33° 42' 00.57"	W 78° 56' 11.50"	U.S. Hwy 17 Bypass (Southbound)	16.82	15	31.82	79.16	-47.34	-	-	131.49	-109.67	-	-	-
18-TW08	N 33° 42' 02.60"	W 78° 56' 09.82"	Perimeter Road	16.95	10	26.95	79.48	-52.52	106.27	-79.31	106.27	-79.31	-	-	-
18-TW09	N 33° 42' 03.68"	W 78° 56' 01.00"	Fred Nash Blvd	16.05	15	31.05	61.72	-50.67	109.57	-78.52	109.57	-78.52	-	-	-
18-TW10	N 33° 42' 05.24"	W 78° 56' 01.48"	U.S. Hwy 17 Bypass (On-Ramp)	16.15	15	31.15	64.95	-53.79	114.31	-83.15	114.31	-83.15	-	-	-
18-TW11	N 33° 42' 06.00"	W 78° 56' 01.84"	U.S. Hwy 17 Bypass (Northbound)	16.90	15	31.90	66.50	-54.61	116.61	-84.71	116.61	-84.71	-	-	-
18-TW12	N 33° 42' 06.67"	W 78° 56' 01.84"	U.S. Hwy 17 Bypass (Southbound)	17.04	15	32.04	67.86	-55.84	118.63	-86.59	118.63	-86.59	-	-	-
18-TW13	N 33° 42' 07.40"	W 78° 56' 02.04"	U.S. Hwy 17 Bypass (On-Ramp)	19.23	15	34.23	89.50	-55.27	121.01	-86.78	121.01	-86.78	-	-	-
18-TW14	N 33° 42' 08.15"	W 78° 56' 02.21"	U.S. Hwy 17 Bypass (On-Ramp)	17.35	15	32.35	90.94	-58.59	123.13	-90.78	123.13	-90.78	-	-	-
18-TW15	N 33° 42' 04.69"	W 78° 56' 00.08"	Perimeter Road	19.46	10	29.46	79.51	-50.05	-	-	212.50	-183.04	-	-	-

14 CFR Part 77 Runway 18 Inner Approach Surface Traverse Ways Table

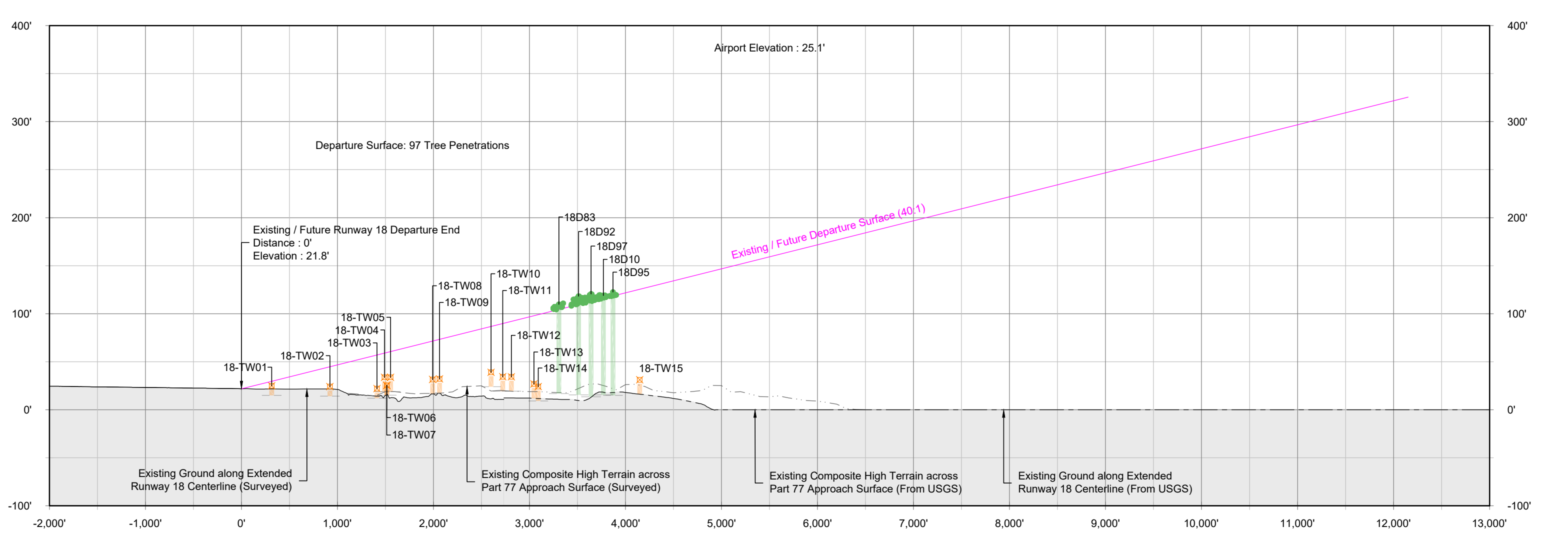
Object ID	Latitude	Longitude	Description	Ground Elevation (Feet MSL)	Elevation Adjustment (Feet)	Traverse Way Elevation at Point (Feet MSL)	Part 77 Surface Penetration (Feet)	Part 77 Surface Elevation at Point (Feet MSL)	TSS Elevation at Point (Feet MSL)	TSS Penetration (Feet)	ILS & LPV OCS Elevation at Point (Feet MSL)	ILS & LPV OCS Penetration (Feet)	ILS & LPV VGS Elevation at Point (Feet MSL)	ILS & LPV VGS Penetration (Feet)	Disposition
18-TW16	N 33° 42' 05.98"	W 78° 56' 50.15"	Fred Nash Blvd	16.43	15	31.43	61.65	-48.22	-	-	218.71	-185.28	-	-	-
18-TW17	N 33° 42' 06.92"	W 78° 56' 50.25"	U.S. Hwy 17 Bypass (On-Ramp)	20.37	15	35.37	84.38	-49.00	-	-	226.59	-191.22	-	-	-
18-TW18	N 33° 42' 08.40"	W 78° 56' 50.30"	U.S. Hwy 17 Bypass (On-Ramp)	23.14	15	38.14	87.35	-49.21	-	-	235.19	-197.06	-	-	-
18-TW19	N 33° 42' 12.25"	W 78° 56' 50.91"	Hamilton Blvd (Bridge Deck)	45.80	15	60.25	95.84	-35.64	-	-	257.48	-197.48	-	-	-
18-TW20	N 33° 42' 12.48"	W 78° 56' 50.62"	U.S. Hwy 17 Bypass (Northbound)	20.19	15	35.19	95.52	-40.34	-	-	226.87	-224.63	-	-	-
18-TW21	N 33° 42' 13.42"	W 78° 56' 50.69"	U.S. Hwy 17 Bypass (Southbound)	24.44	15	39.44	97.39	-67.95	-	-	264.26	-224.83	-	-	-
18-TW22	N 33° 42' 09.34"	W 78° 56' 15.99"	Atlantic Intracoastal Waterway	2.28	65	67.28	97.88	-30.59	-	-	265.63	-198.36	-	-	-
18-TW23	N 33° 42' 13.01"	W 78° 56' 17.01"	Harbour View Dr	20.73	15	35.73	105.68	-69.94	-	-	288.27	-252.53	-	-	-
18-TW24	N 33° 42' 17.37"	W 78° 56' 04.52"	Atlantic Intracoastal Waterway	2.26	65	67.26	109.99	-42.73	151.15	-83.88	151.15	-83.88	-	-	-
18-TW25	N 33° 42' 20.00"	W 78° 56' 05.18"	Hamilton Blvd (Bridge Deck)	52.16	15	107.16	119.52	-8.36	199.27	-62.11	199.27	-62.11	-	-	-
18-TW26	N 33° 42' 26.98"	W 78° 56' 51.62"	Atlantic Intracoastal Waterway	2.39	65	67.26	124.55	-57.29	-	-	341.12	-273.86	-	-	-
18-TW27	N 33° 42' 29.33"	W 78° 56' 07.50"	Backstage Blvd	25.58	15	40.58	134.68	-94.30	187.46	-147.08	187.46	-147.08	-	-	-
18-TW28	N 33° 42' 40.54"	W 78° 56' 52.54"	Backstage Blvd	27.80	15	42.80	161.70	-108.90	-	-	413.56	-370.76	-	-	-
18-TW29	N 33° 42' 34.23"	W 78° 56' 26.42"	Jacob Ln	20.25	15	35.25	150.90	-115.65	-	-	411.44	-376.18	-	-	-



Runway 18-36 Departure Surface Plan
 Horizontal Scale: 1" = 1,000'



Runway 36 Departure Surface Centerline Profile
 Horizontal Scale: 1" = 1,000'
 Vertical Scale: 1" = 100'



Runway 18 Departure Surface Centerline Profile
 Horizontal Scale: 1" = 1,000'
 Vertical Scale: 1" = 100'

Object ID	Latitude	Longitude	Description	Object Top Elevation (Feet MSL)	Ground Elevation at Point (Feet MSL)	Object Height (Feet AGL)	Departure Surface Elevation at Point (Feet MSL)	Depart. Surface Penetration (Feet)	Disposition
36-TW01	N 33° 41' 51.89"	W 78° 50' 48.48"	Arched Drive	16.90	10	25.90	214.55	-183.65	-
36-TW02	N 33° 41' 49.99"	W 78° 50' 57.96"	Arched Drive	17.80	10	27.80	66.08	-38.20	-
36-TW03	N 33° 41' 48.24"	W 78° 50' 07.81"	Arched Drive	16.01	10	26.01	211.28	-185.28	-
36-TW04	N 33° 41' 55.11"	W 78° 50' 13.16"	Penimeter Road	18.26	10	28.26	235.53	-209.27	-
36-TW05	N 33° 41' 56.62"	W 78° 50' 13.71"	Fried Nash Blvd	15.07	15	30.07	238.02	-207.95	-
36-TW06	N 33° 41' 57.61"	W 78° 50' 14.68"	U.S. Hwy 17 Bypass (Northbound)	16.87	15	31.87	242.37	-210.50	-
36-TW07	N 33° 41' 51.15"	W 78° 50' 15.00"	U.S. Hwy 17 Bypass (Southbound)	17.90	15	32.90	243.94	-211.04	-
36-TW08	N 33° 42' 02.66"	W 78° 50' 09.80"	Penimeter Road	16.97	10	26.97	98.72	-71.75	-
36-TW09	N 33° 42' 03.67"	W 78° 50' 01.00"	Fried Nash Blvd	16.07	15	31.07	101.48	-70.41	-
36-TW10	N 33° 42' 05.25"	W 78° 50' 01.40"	U.S. Hwy 17 Bypass (Off-Ramp)	16.24	15	31.24	105.57	-74.34	-
36-TW11	N 33° 42' 06.08"	W 78° 50' 01.67"	U.S. Hwy 17 Bypass (Northbound)	16.90	15	31.90	107.60	-76.60	-
36-TW12	N 33° 42' 06.66"	W 78° 50' 01.84"	U.S. Hwy 17 Bypass (Southbound)	17.02	15	32.02	109.19	-77.17	-
36-TW13	N 33° 42' 07.42"	W 78° 50' 02.03"	U.S. Hwy 17 Bypass (On-Ramp)	19.28	15	34.28	111.17	-76.88	-
36-TW14	N 33° 42' 08.15"	W 78° 50' 02.21"	U.S. Hwy 17 Bypass (On-Ramp)	17.35	15	32.35	113.04	-80.69	-
36-TW15	N 33° 42' 03.37"	W 78° 50' 45.70"	Penimeter Road	20.33	10	30.33	244.09	-213.76	-
36-TW16	N 33° 42' 03.03"	W 78° 50' 45.58"	Fried Nash Blvd	18.17	15	33.17	248.14	-214.98	-
36-TW17	N 33° 42' 05.63"	W 78° 50' 45.33"	U.S. Hwy 17 Bypass (Off-Ramp)	18.52	15	33.52	250.10	-216.58	-
36-TW18	N 33° 42' 06.86"	W 78° 50' 45.34"	Hammond Blvd	16.03	15	31.03	257.04	-224.01	-
36-TW19	N 33° 42' 13.05"	W 78° 50' 45.05"	U.S. Hwy 17 Bypass (On-Ramp)	18.71	15	33.71	267.77	-234.08	-
36-TW20	N 33° 42' 14.71"	W 78° 50' 44.87"	U.S. Hwy 17 Bypass (Northbound)	18.70	15	33.70	271.52	-238.83	-
36-TW21	N 33° 42' 16.37"	W 78° 50' 44.89"	U.S. Hwy 17 Bypass (Southbound)	18.71	15	33.71	273.44	-239.73	-
36-TW22	N 33° 42' 05.72"	W 78° 50' 19.57"	Atlantic Intracoastal Waterway	2.26	65	67.26	264.52	-192.26	-
36-TW23	N 33° 42' 03.47"	W 78° 50' 24.42"	Haircut View Blvd	17.44	15	32.44	274.62	-242.19	-
36-TW24	N 33° 42' 17.47"	W 78° 50' 04.54"	Atlantic Intracoastal Waterway	2.26	65	67.26	137.09	-69.83	-
36-TW25	N 33° 42' 06.96"	W 78° 50' 05.18"	Hammond Blvd (Bridge Deck)	92.16	15	107.16	143.73	-36.57	-
36-TW26	N 33° 42' 29.39"	W 78° 50' 07.52"	Backlogge Blvd	25.37	15	40.37	167.86	-127.49	-
36-TW27	N 33° 42' 16.37"	W 78° 50' 44.89"	Doyall Dr	17.24	15	32.24	284.08	-250.84	-
36-TW28	N 33° 42' 24.48"	W 78° 50' 24.90"	Pinelawn Ave	15.78	15	30.78	256.69	-240.90	-
36-TW29	N 33° 42' 28.47"	W 78° 50' 44.01"	Waterdale Dr	13.48	15	28.48	305.46	-279.98	-
36-TW30	N 33° 42' 33.15"	W 78° 50' 43.70"	Atlantic Intracoastal Waterway	2.26	65	67.26	317.00	-249.73	-
36-TW31	N 33° 42' 40.51"	W 78° 50' 41.44"	Armedhead Blvd	20.48	15	35.48	328.34	-290.86	-
36-TW32	N 33° 42' 52.79"	W 78° 50' 13.36"	George Blinnch Play	18.67	15	33.67	326.34	-292.67	-
36-TW33	N 33° 42' 16.36"	W 78° 50' 42.77"	Backlogge Blvd	18.56	15	33.56	326.34	-292.69	-
36-TW34	N 33° 42' 51.27"	W 78° 50' 42.48"	Fantasy Harbour Blvd	18.01	15	33.01	326.34	-292.33	-
36-TW35	N 33° 42' 54.94"	W 78° 50' 42.17"	Pottery Cr	14.59	15	29.59	326.34	-290.75	-
36-TW36	N 33° 43' 03.63"	W 78° 50' 16.08"	Buath Cr	17.44	15	32.44	326.34	-292.59	-
36-TW37	N 33° 43' 06.96"	W 78° 50' 41.44"	U.S. Hwy 501 (Southbound)	18.69	15	33.69	326.34	-292.66	-
36-TW38	N 33° 43' 08.04"	W 78° 50' 41.36"	U.S. Hwy 501 (Northbound)	18.73	15	33.73	326.34	-292.61	-
36-TW39	N 33° 43' 09.98"	W 78° 50' 41.20"	Walden Blvd	18.67	15	33.67	326.34	-292.67	-
36-TW40	N 33° 43' 16.36"	W 78° 50' 40.77"	River Oaks Cr	18.36	15	33.36	326.34	-292.69	-
36-TW41	N 33° 43' 20.70"	W 78° 50' 40.51"	Coitage Oaks Cr	18.00	15	33.00	326.34	-292.74	-
36-TW42	N 33° 43' 30.47"	W 78° 50' 39.86"	Springdale Blvd	16.58	15	31.58	326.34	-292.76	-
36-TW43	N 33° 43' 12.81"	W 78° 50' 18.37"	Wesley St	17.06	15	32.06	279.95	-247.87	-
36-TW44	N 33° 43' 03.78"	W 78° 50' 54.57"	Burca Rd	19.17	15	34.17	326.34	-292.17	-

Object ID	Latitude	Longitude	Description	Object Top Elevation (Feet MSL)	Ground Elevation at Point (Feet MSL)	Object Height (Feet AGL)	Departure Surface Elevation at Point (Feet MSL)	Depart. Surface Penetration (Feet)	Disposition
18D01	N 33° 39' 27.68"	W 78° 50' 32.75"	Tree	107.33	16.54	90.79	103.33	4.00	Trim
18D02	N 33° 39' 21.96"	W 78° 50' 29.56"	Tree	119.49	15.03	104.46	118.85	0.64	Trim
18D03	N 33° 39' 21.73"	W 78° 50' 29.74"	Tree	119.49	15.25	104.24	119.36	0.13	Trim
18D04	N 33° 39' 21.96"	W 78° 50' 28.87"	Tree	119.25	14.98	104.27	118.72	0.53	Trim
18D05	N 33° 39' 21.69"	W 78° 50' 30.85"	Tree	119.49	15.03	104.46	118.96	0.53	Trim
18D06	N 33° 39' 21.87"	W 78° 50' 30.79"	Tree	118.75	14.02	104.73	118.60	0.15	Trim
18D07	N 33° 39' 22.07"	W 78° 50' 30.66"	Tree	118.26	14.74	103.52	118.11	0.15	Trim
18D08	N 33° 39' 21.84"	W 78° 50' 32.07"	Tree	118.42	15.29	103.13	117.61	0.81	Trim
18D09	N 33° 39' 22.38"	W 78° 50' 33.43"	Tree	117.67	15.47	102.20	116.26	1.48	Trim
18D10	N 33° 39' 22.44"	W 78° 50' 33.37"	Tree	118.91	15.44	103.47	116.04	2.87	Trim
18D11	N 33° 39' 22.67"	W 78° 50' 33.21"	Tree	116.68	14.93	101.75	116.14	0.54	Trim
18D12	N 33° 39' 25.65"	W 78° 50' 33.97"	Tree	119.24	13.87	105.37	109.30	0.94	Trim
18D13	N 33° 39' 25.87"	W 78° 50' 34.47"	Tree	112.23	13.68	98.55	108.83	3.41	Trim
18D14	N 33° 39' 25.80"	W 78° 50' 34.64"	Tree	112.23	13.75	98.48	108.78	3.45	Trim
18D15	N 33° 39' 22.70"	W 78° 50' 29.70"	Tree	118.13	14.09	104.04	116.83	1.30	Trim
18D16	N 33° 39' 22.84"	W 78° 50' 29.56"	Tree	117.14	13.99	103.15	116.67	0.47	Trim
18D17	N 33° 39' 22.67"	W 78° 50' 29.72"	Tree	118.63	13.92	104.71	116.42	2.21	Trim
18D18	N 33° 39' 22.81"	W 78° 50' 29.91"	Tree	119.12	14.00	105.12	116.44	2.68	Trim
18D19	N 33° 39' 23.67"	W 78° 50' 30.40"	Tree	118.63	14.02	104.61	116.80	2.83	Trim
18D20	N 33° 39' 23.21"	W 78° 50' 30.56"	Tree	115.40	14.60	100.80	115.33	0.07	Trim
18D21	N 33° 39' 23.67"	W 78° 50' 30.17"	Tree	117.64	13.60	104.04	114.50	3.14	Trim
18D22	N 33° 39' 23.42"	W 78° 50' 30.29"	Tree	116.64	13.74	102.90	114.87	1.77	Trim
18D23	N 33° 39' 23.47"	W 78° 50' 30.45"	Tree	115.40	13.84	101.56	114.83	0.57	Trim
18D24	N 33° 39' 23.13"	W 78° 50' 30.18"	Tree	118.13	13.82	104.31	115.55	2.58	Trim
18D25	N 33° 39' 23.51"	W 78° 50' 30.29"	Tree	119.27	13.81	105.46	115.21	4.16	Trim
18D26	N 33° 39' 23.41"	W 78° 50' 31.11"	Tree	116.15	13.68	102.47	115.02	1.13	Trim
18D27	N 33° 39' 23.87"	W 78° 50' 30.94"	Tree	117.39	13.45	103.94	115.27	2.12	Trim
18D28	N 33° 39' 23.38"	W 78° 50' 29.56"	Tree	117.88	13.41	104.47	115.54	2.54	Trim
18D29	N 33° 39' 23.67"	W 78° 50' 29.78"	Tree	114.91	13.21	101.70	114.78	1.13	Trim
18D30	N 33° 39' 23.52"	W 78° 50' 29.62"	Tree	119.27	13.35	105.92	114.98	3.99	Trim
18D31	N 33° 39' 24.47"	W 78° 50' 29.91"	Tree	112.42	13.13	100.29	112.65	0.77	Trim
18D32	N 33° 39' 24.01"	W 78° 50' 29.82"	Tree	115.40	13.06	102.34	113.81	1.99	Trim
18D33	N 33° 39' 23.90"	W 78° 50' 29.80"	Tree	114.17	13.23	100.94	113.80	0.37	Trim
18D34	N 33° 39' 24.10"	W 78° 50' 29.67"	Tree	116.64	13.17	103.47	113.32	3.32	Trim
18D35	N 33° 39' 24.40"	W 78° 50' 30.26"	Tree	118.87	13.32	105.55	115.31	6.36	Trim
18D36	N 33° 39' 24.38"	W 78° 50' 30.47"	Tree	119.62	13.46	106.16	112.47	7.15	Trim
18D37	N 33° 39' 24.11"	W 78° 50' 30.18"	Tree	116.64	13.35	103.29	113.31	3.33	Trim
18D38	N 33° 39' 24.12"	W 78° 50' 30.26"	Tree	116.64	13.48	103.16	113.21	3.43	Trim
18D39	N 33° 39' 23.98"	W 78° 50' 30.14"	Tree	115.65	13.40	102.25	113.62	2.03	Trim
18D40	N 33° 39' 23.80"	W 78° 50' 30.24"	Tree	115.16	13.57	101.59	114.03	1.13	Trim
18D41	N 33° 39' 23.87"	W 78° 50' 30.37"	Tree	117.14	13.65	103.49	113.78	3.36	Trim
18D42	N 33° 39' 24.03"	W 78° 50' 30.41"	Tree	117.39	13.62	103.77	113.36	4.03	Trim
18D43	N 33° 39' 24.10"	W 78° 50' 30.58"	Tree	120.36	13.83	106.53	112.97	7.39	Trim
18D44	N 33° 39' 24.05"	W 78° 50' 30.69"	Tree	117.29	13.83	103.56	113.19	4.24	Trim
18D45	N 33° 39' 23.80"	W 78° 50' 30.26"	Tree	116.15	13.80	102.35	113.64	2.21	Trim
18D46	N 33° 39' 24.04"	W 78° 50' 30.67"	Tree	113.17	14.02	99.15	113.08	0.11	Trim
18D47	N 33° 39' 24.44"	W 78° 50' 30.93"	Tree	114.66	13.76	100.90	112.13	2.53	Trim
18D48	N 33° 39' 24.58"	W 78° 50' 31.21"	Tree	114.66	13.99	100.67	111.67	2.99	Trim
18D49	N 33° 39' 24.30"	W 78° 50' 31.10"	Tree	114.41	13.88	100.53	112.22	2.19	Trim
18D50	N 33° 39' 24.27"	W 78° 50' 30.91"	Tree	113.92	13.82	100.10	112.74	1.18	Trim

Object ID	Latitude	Longitude	Description	Object Top Elevation (Feet MSL)	Ground Elevation at Point (Feet MSL)	Object Height (Feet AGL)	Departure Surface Elevation at Point (Feet MSL)	Depart. Surface Penetration (Feet)	Disposition
18E01	N 33° 39' 24.28"	W 78° 50' 30.78"	Tree	116.89	13.67	103.22	112.59	4.30	Trim