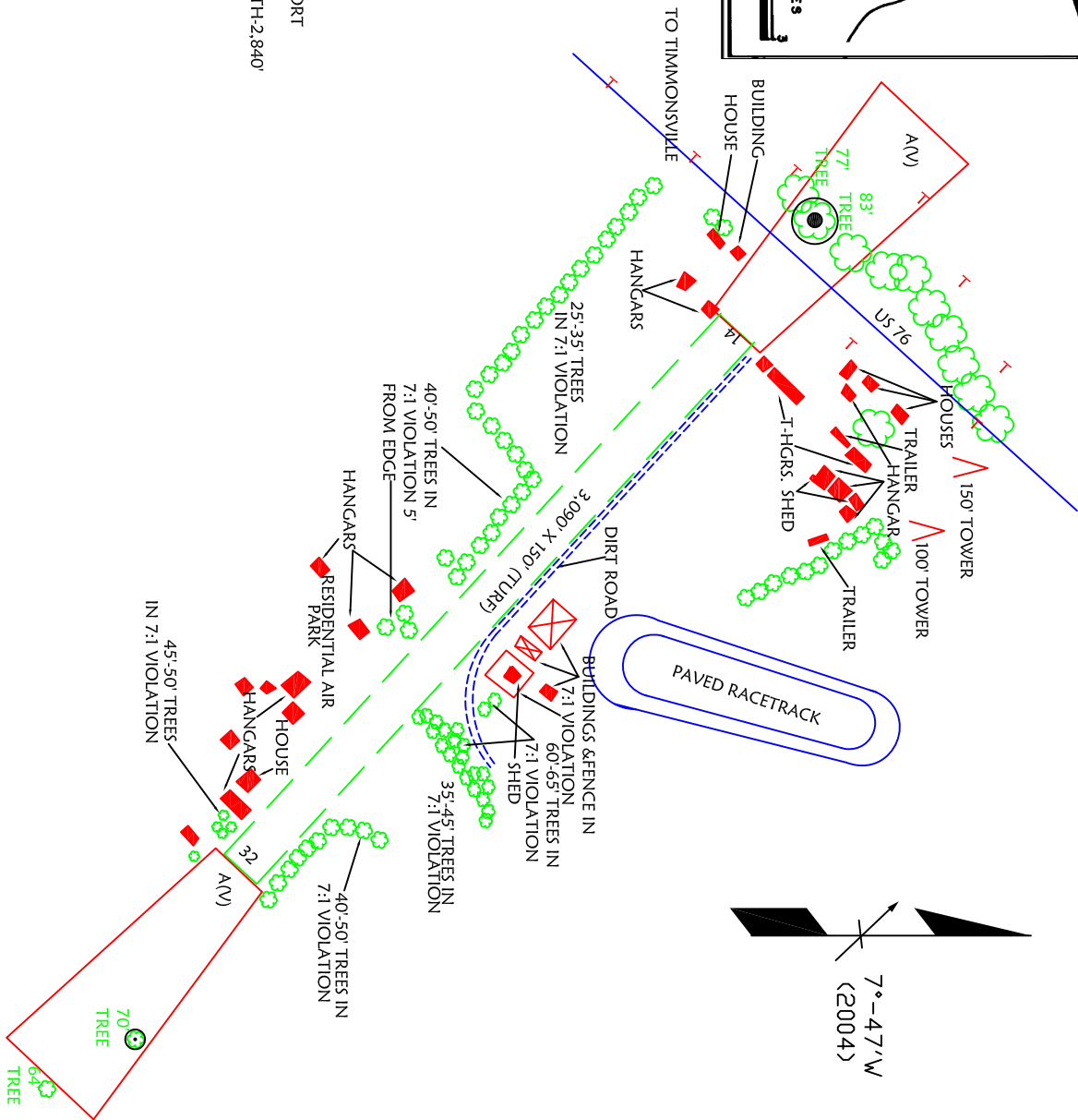
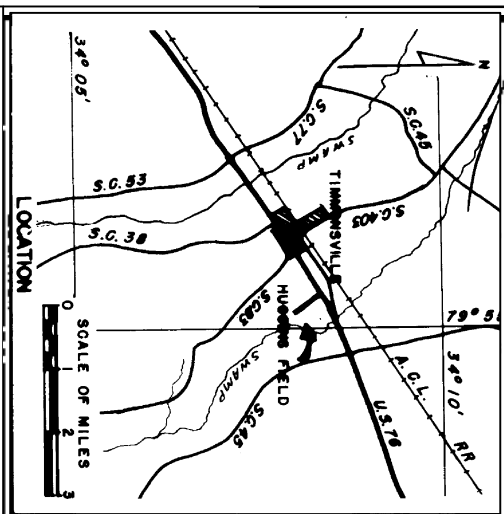


RUNWAY	14	38							
EXISTING	3090'	3090'							
PLANNED									
CURB LENGTH									



REMARKS:  
 TIE DOWN SPACES- 14  
 AUTO PARKING SPACES- 50  
 AIRPORT IS A RESIDENTIAL AIRPARK  
 328 AGL TOWER 1.5 MILES WEST OF AIRPORT  
 BEACON ON TOP OF HANGAR-177 +/-  
 TAKE-OFF LENGTH-3,090' LANDING LENGTH-2,840'  
 LAST REVISION DATE-4/4/2007

