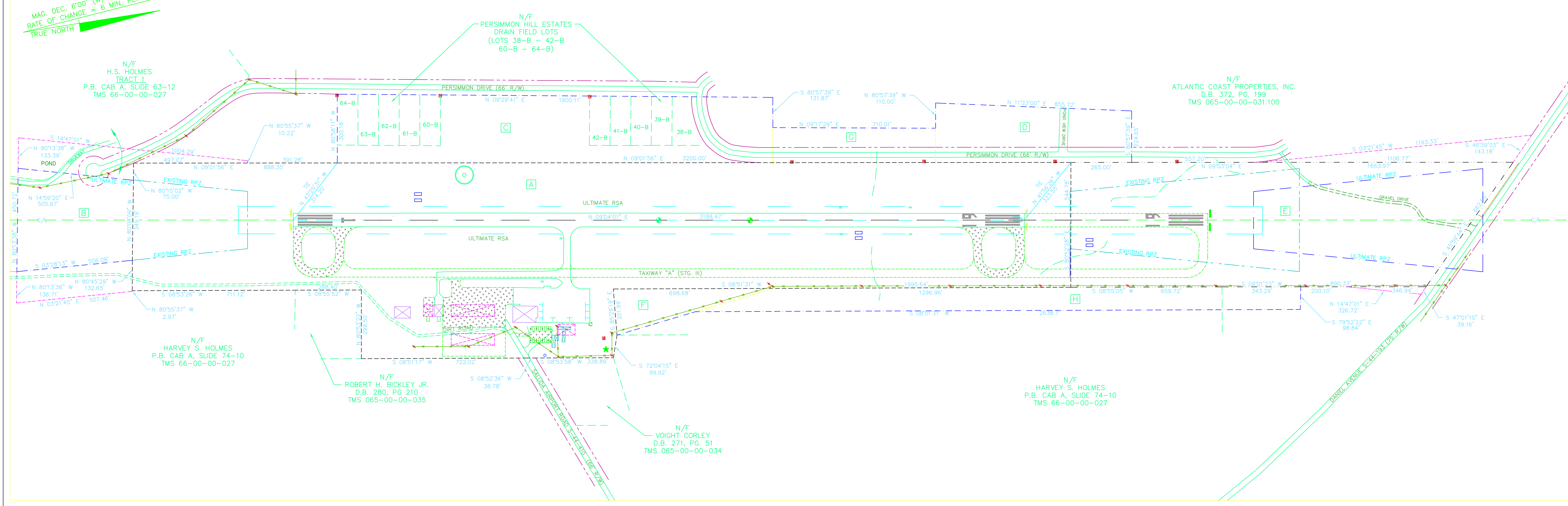


COPYRIGHT © W.K. DICKSON & CO., INC. ALL RIGHTS RESERVED. REPRODUCTION OR USE OF THE CONTENTS OF THIS DOCUMENT, IN WHOLE OR IN PART, WITHOUT WRITTEN CONSENT OF W.K. DICKSON & CO., INC. IS PROHIBITED. THIS DOCUMENT, IN WHOLE OR IN PART, WITHOUT WRITTEN CONSENT OF W.K. DICKSON & CO., INC. SHALL BE CONSIDERED TO BE VOID. TRUE COPIES.

MAG. DEC. 6'00" (W) OCT. 2003
 RATE OF CHANGE = 6 MIN. PER YR.
 TRUE NORTH



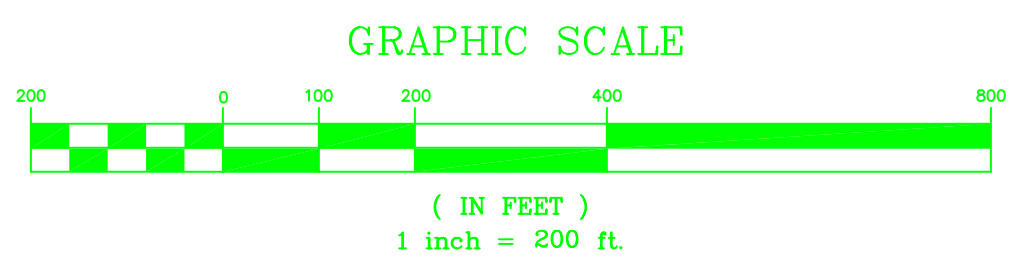
TRACT NO.	ACQUIRED FROM	DATE	INTEREST	ACREAGE
A	AIRPORT PROPERTY	N/A	FEE SIMPLE	59.39
B	SEDFIELD DEVELOPMENT CO., INC.	8/24/67	EASEMENT	4.62
C	SEDFIELD DEVELOPMENT CO., INC.	8/24/67	EASEMENT	12.75
D	SEDFIELD DEVELOPMENT CO., INC.	8/24/67	EASEMENT	4.75
E	SEDFIELD DEVELOPMENT CO., INC.	8/24/67	EASEMENT	21.70
F	SEDFIELD DEVELOPMENT CO., INC.	8/24/67	EASEMENT	1.62
G	SEDFIELD DEVELOPMENT CO., INC.	9/4/68	EASEMENT	2.45
H	SEDFIELD DEVELOPMENT CO., INC.	9/4/68	EASEMENT	5.68

N/A - NOT AVAILABLE

- NOTES & REFERENCES:
- THIS DRAWING IS A REPRESENTATION OF AIRPORT PROPERTY AND ADJOINING PROPERTIES THAT HAVE NEGOTIATED AVIGATION EASEMENTS. IT IS NOT A PLAT AND HAS NOT BEEN SIGNED OR SEALED BY A PLS AND IS NOT INTENDED FOR RECORDATION.
 - THIS DRAWING WAS PREPARED FROM A PLAT PREPARED BY W.K. DICKSON FOR SALUDA COUNTY AIRPORT COMMISSION ON OCTOBER 29, 2003.

LEGEND

- EXISTING PROPERTY LINE
- ULTIMATE PROPERTY LINE
- EXISTING EASEMENT LINE
- ULTIMATE EASEMENT LINE
- FUTURE DEVELOPMENT
- EXISTING FENCE LINE
- ULTIMATE FENCE LINE
- INDIVIDUAL TRACT LINE
- EXISTING RUNWAY PROTECTION ZONE (RPZ)
- ULTIMATE RUNWAY PROTECTION ZONE (RPZ)
- ULTIMATE RUNWAY SAFETY AREA (RSA)



REV. NO.	DESCRIPTION	DATE

PROJECT MANAGER GAV	DRAWING SCALE 1" = 200'
DRAWN BY RBT	PROJECT DATE MARCH 2005
APPROVED BY SEW	PROJECT NUMBER 30410.00.CA
FILE NAME 30410BASE	PLOT DATE



501 COMMERCE DRIVE NE COLUMBIA, SC 29223 (803) 786-4261	RELEASED FOR APPROVALS	DATE
Atlanta, GA Charlotte, NC Columbia, SC	BIDDING	
Hickory, NC Raleigh, NC Wilmington, NC	CONSTRUCTION	
	RECORD DWG.	

2005

SALUDA COUNTY AIRPORT
SALUDA, SOUTH CAROLINA

EXHIBIT "A"

8
8
D-4099