

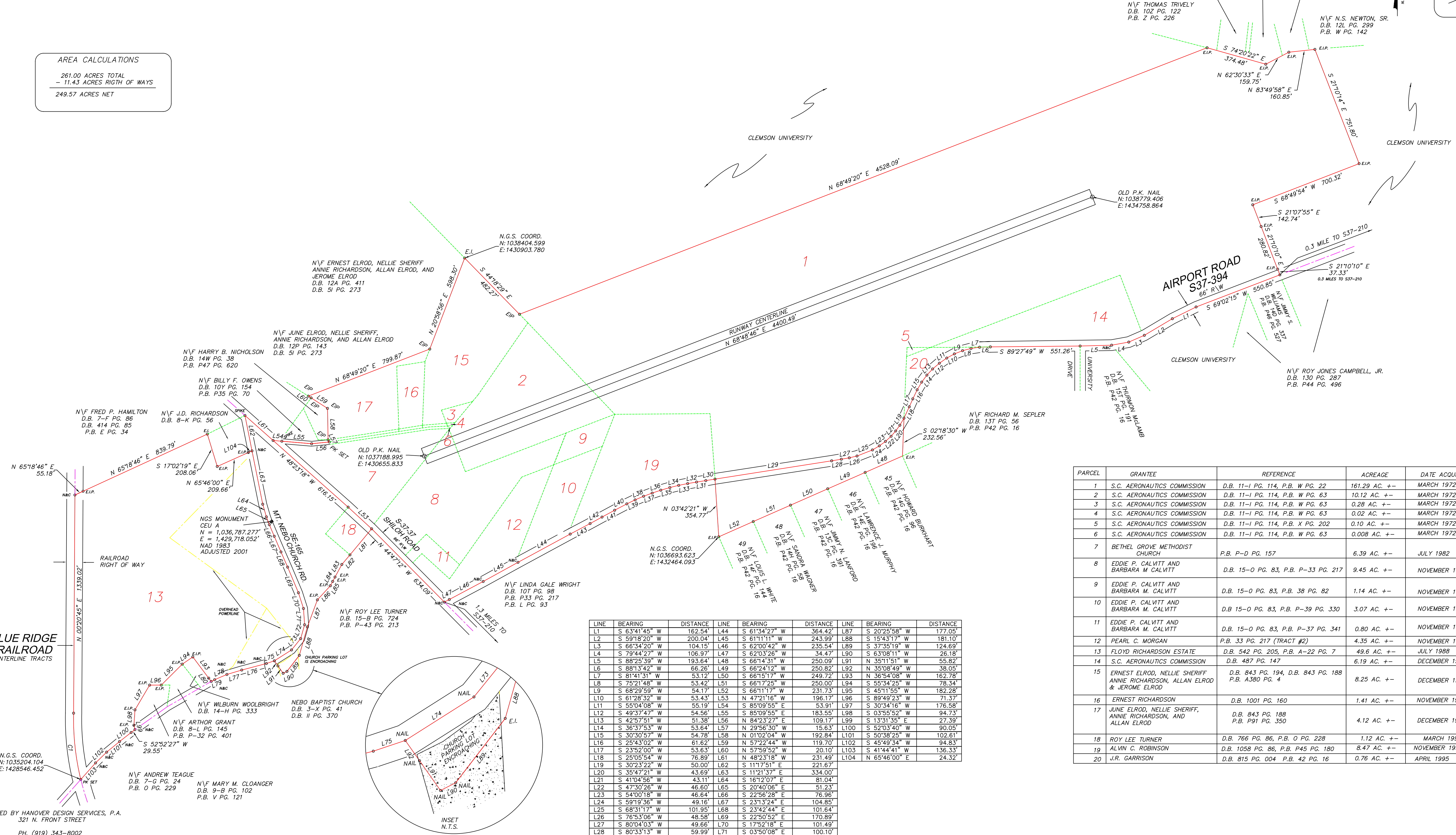
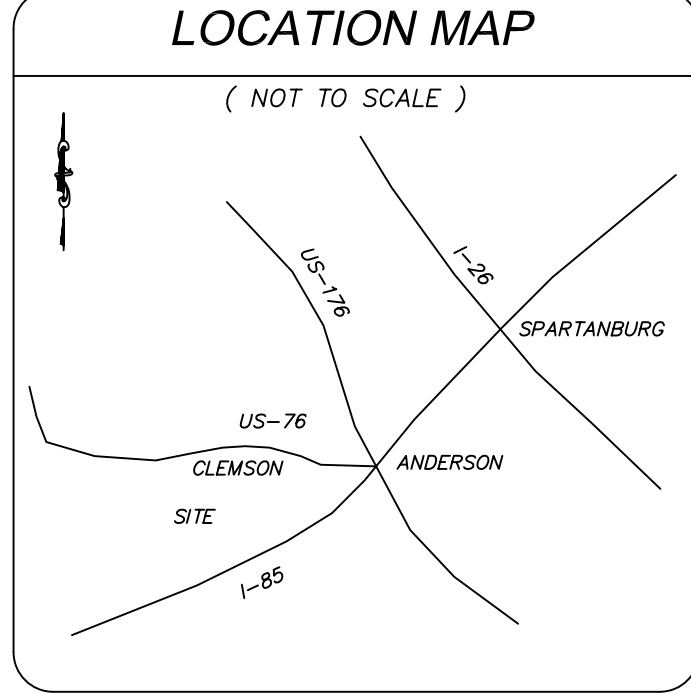
CLEMSON-OCONEE COUNTY AIRPORT

SENECA TOWNSHIP
OCONEE COUNTY
SOUTH CAROLINA

DATE: NOV. 9, 2005

AREA CALCULATIONS

261.00 ACRES TOTAL
- 11.43 ACRES RIGHT OF WAYS
249.57 ACRES NET



LINE	BEARING	DISTANCE	LINE	BEARING	DISTANCE	LINE	BEARING	DISTANCE
L1	S 63°41'45" W	162.54'	L44	S 61°34'27" W	364.42'	L87	S 20°25'58" W	177.05'
L2	S 59°18'20" W	200.04'	L45	S 61°11'11" W	243.99'	L88	S 15°43'17" W	181.10'
L3	S 66°34'20" W	104.15'	L46	S 62°00'42" W	235.54'	L89	S 37°35'19" W	124.69'
L4	S 79°44'27" W	106.97'	L47	S 62°03'26" W	34.47'	L90	S 63°08'11" W	26.18'
L5	S 88°23'39" W	193.64'	L48	S 66°14'31" W	250.00'	L91	N 35°11'51" W	55.82'
L6	S 88°13'42" W	66.26'	L49	S 66°24'12" W	250.82'	L92	N 35°08'49" W	38.05'
L7	S 81°41'31" W	53.12'	L50	S 66°15'17" W	249.72'	L93	N 36°54'08" W	162.78'
L8	S 75°21'48" W	53.42'	L51	S 66°17'25" W	250.00'	L94	S 55°34'25" W	78.34'
L9	S 68°29'59" W	54.17'	L52	S 66°11'17" W	231.73'	L95	S 45°11'55" W	182.28'
L10	S 61°28'32" W	53.43'	L53	N 47°21'16" W	196.17'	L96	S 89°49'23" W	71.37'
L11	S 53°04'08" W	55.19'	L54	S 85°09'55" E	53.91'	L97	S 30°34'16" W	176.58'
L12	S 49°37'47" W	54.56'	L55	S 85°09'55" E	183.55'	L98	S 03°55'52" W	94.73'
L13	S 42°57'51" W	51.38'	L56	N 84°23'27" E	109.17'	L99	S 13°31'35" E	27.39'
L14	S 36°37'53" W	53.64'	L57	N 29°56'30" W	15.63'	L100	S 52°03'40" W	90.05'
L15	S 30°30'57" W	54.78'	L58	N 01°02'04" W	192.84'	L101	S 50°38'25" W	102.61'
L16	S 25°43'02" W	61.62'	L59	N 57°22'44" W	119.70'	L102	S 45°49'34" W	94.83'
L17	S 23°52'00" W	53.63'	L60	N 57°59'52" W	20.10'	L103	S 41°44'41" W	136.33'
L18	S 25°05'54" W	76.89'	L61	N 48°23'18" W	231.49'	L104	N 65°46'00" E	24.32'
L19	S 30°23'22" W	50.00'	L62	S 11°17'51" E	221.67'			
L20	S 35°47'21" W	43.69'	L63	S 11°21'37" E	334.00'			
L21	S 41°04'56" W	43.11'	L64	S 16°12'07" E	81.04'			
L22	S 47°30'28" W	46.60'	L65	S 20°40'06" E	51.23'			
L23	S 54°00'18" W	46.64'	L66	S 22°56'28" E	76.96'			
L24	S 59°19'36" W	49.16'	L67	S 23°13'24" E	104.85'			
L25	S 68°31'17" W	101.95'	L68	S 23°42'44" E	101.64'			
L26	S 76°53'06" W	48.58'	L69	S 22°50'52" E	170.89'			
L27	S 80°04'03" W	49.66'	L70	S 17°52'18" E	101.49'			
L28	S 80°33'13" W	59.99'	L71	S 03°50'08" E	100.10'			
L29	S 81°05'30" W	725.44'	L72	S 15°51'53" W	88.70'			
L30	S 80°58'41" W	56.99'	L73	S 38°57'07" W	88.94'			
L31	S 80°54'13" W	57.54'	L74	S 57°38'04" W	124.84'			
L32	S 80°16'57" W	55.39'	L75	S 71°31'51" W	51.75'			
L33	S 78°48'57" W	56.19'	L76	S 75°06'25" W	156.47'			
L34	S 76°06'23" W	56.06'	L77	S 73°30'33" W	94.97'			
L35	S 73°45'53" W	57.83'	L78	S 66°43'44" W	81.76'			
L36	S 71°24'05" W	55.83'	L79	S 63°21'03" W	23.87'			
L37	S 69°43'46" W	56.23'	L80	N 36°54'08" W	25.42'			
L38	S 66°57'15" W	56.66'	L81	S 39°44'19" W	208.09'			
L39	S 64°12'46" W	56.40'	L82	S 40°17'17" W	77.21'			
L40	S 62°27'28" W	84.37'	L83	S 28°26'18" W	87.85'			
L41	S 61°36'32" W	88.23'	L84	S 28°09'52" W	30.24'			
L42	S 61°27'12" W	83.35'	L85	S 28°01'48" W	30.10'			
L43	S 62°11'31" W	138.20'	L86	S 42°34'18" W	117.86'			

PARCEL	GRANTEE	REFERENCE	ACREAGE	DATE ACQUIRED	FORM OF TITLE
1	S.C. AERONAUTICS COMMISSION	D.B. 11-1 PG. 114, P.B. W PG. 22	161.29 AC. +-	MARCH 1972	FEE SIMPLE
2	S.C. AERONAUTICS COMMISSION	D.B. 11-1 PG. 114, P.B. W PG. 63	10.12 AC. +-	MARCH 1972	FEE SIMPLE
3	S.C. AERONAUTICS COMMISSION	D.B. 11-1 PG. 114, P.B. W PG. 63	0.28 AC. +-	MARCH 1972	FEE SIMPLE
4	S.C. AERONAUTICS COMMISSION	D.B. 11-1 PG. 114, P.B. W PG. 63	0.02 AC. +-	MARCH 1972	FEE SIMPLE
5	S.C. AERONAUTICS COMMISSION	D.B. 11-1 PG. 114, P.B. X PG. 202	0.10 AC. +-	MARCH 1972	FEE SIMPLE
6	S.C. AERONAUTICS COMMISSION	D.B. 11-1 PG. 114, P.B. W PG. 63	0.008 AC. +-	MARCH 1972	FEE SIMPLE
7	BETHEL GROVE METHODIST CHURCH	P.B. P-D PG. 157	6.39 AC. +-	JULY 1982	FEE SIMPLE
8	EDDIE P. CALVITT AND BARBARA M. CALVITT	D.B. 15-0 PG. 83, P.B. P-33 PG. 217	9.45 AC. +-	NOVEMBER 1983	FEE SIMPLE
9	EDDIE P. CALVITT AND BARBARA M. CALVITT	D.B. 15-0 PG. 83, P.B. 38 PG. 82	1.14 AC. +-	NOVEMBER 1983	FEE SIMPLE
10	EDDIE P. CALVITT AND BARBARA M. CALVITT	D.B. 15-0 PG. 83, P.B. P-39 PG. 330	3.07 AC. +-	NOVEMBER 1983	FEE SIMPLE
11	EDDIE P. CALVITT AND BARBARA M. CALVITT	D.B. 15-0 PG. 83, P.B. P-37 PG. 341	0.80 AC. +-	NOVEMBER 1983	FEE SIMPLE
12	PEARL C. MORGAN	P.B. 33 PG. 217 (TRACT #2)	4.35 AC. +-	NOVEMBER 1983	FEE SIMPLE
13	FLOYD RICHARDSON ESTATE	D.B. 542 PG. 205, P.B. A-22 PG. 7	49.6 AC. +-	JULY 1988	FEE SIMPLE
14	S.C. AERONAUTICS COMMISSION	D.B. 487 PG. 147	6.19 AC. +-	DECEMBER 1986	LEASE
15	ERNEST ELROD, NELLIE SHERIFF ANNIE RICHARDSON, ALLAN ELROD & JEROME ELROD	D.B. 843 PG. 194, D.B. 843 PG. 188 P.B. A380 PG. 4	8.25 AC. +-	DECEMBER 1995	FEE SIMPLE
16	ERNEST RICHARDSON	D.B. 1001 PG. 160	1.41 AC. +-	NOVEMBER 1998	QUIT-CLAIM
17	JUNE ELROD, NELLIE SHERIFF, ANNIE RICHARDSON, AND ALLAN ELROD	D.B. 843 PG. 188 P.B. P91 PG. 350	4.12 AC. +-	DECEMBER 1995	FEE SIMPLE
18	ROY LEE TURNER	D.B. 766 PG. 86, P.B. O PG. 228	1.12 AC. +-	MARCH 1994	FEE SIMPLE
19	ALVIN C. ROBINSON	D.B. 1058 PG. 86, P.B. P45 PG. 180	8.47 AC. +-	NOVEMBER 1999	CONDEMNATION
20	J.R. GARRISON	D.B. 815 PG. 004 P.B. 42 PG. 16	0.76 AC. +-	APRIL 1995	CONDEMNATION

- NOTES**
- SURVEYED BY HANOVER DESIGN SERVICES, P.A. 321 N. FRONT STREET PH. (919) 343-8002 WILMINGTON, N.C. 28401
 - SURVEYED OCT. 2005
 - ALL DISTANCES ARE HORIZONTAL
 - AREA COMPUTED BY D.M.D. METHOD
 - FOR REFERENCE SEE AS NOTED
 - AREA SUBJECT TO RIGHT OF WAY OF STATE MAINTAINED ROADS AND BLUE RIDGE RAILROAD
 - FOR REFERENCE SEE P.B. A-22 PG. P-51 PG. 165
 - IMPROVEMENTS NOT SHOWN
 - SOME N&C IN ROAD CENTERLINES ARE SUB-SURFACE

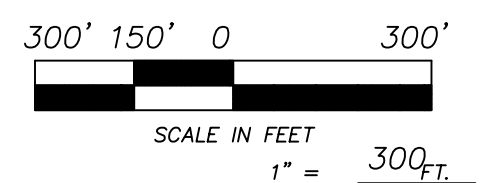
LEGEND

E.I.P. = EXISTING IRON PIPE
E.I. = EXISTING IRON
I.S. = IRON SET
N&C = NAIL AND CA
D.B. = DEED BOOK
PG. = PAGE
P.B. = PLAT BOOK
NGS = NATIONAL GEODETIC SURVEY

2005

I HEREBY STATE TO THE BEST OF MY KNOWLEDGE, INFORMATION AND BELIEF, THE SURVEY SHOWN HEREON WAS MADE IN ACCORDANCE WITH THE REQUIREMENTS OF THE MINIMUM STANDARDS MANUAL FOR THE PRACTICE OF LAND SURVEYING IN SOUTH CAROLINA, AND MEETS OR EXCEEDS THE REQUIREMENTS FOR A CLASS C SURVEY AS SPECIFIED THEREIN.

GREG A. WAYNE



HANOVER DESIGN SERVICES, P.A.
LAND SURVEYORS ENGINEERS LAND PLANNERS

319 WALNUT STREET
WILMINGTON, N.C. 28401
PHONE: (910) 343-8002
FAX: (910) 343-9941

1352-BASE.JW