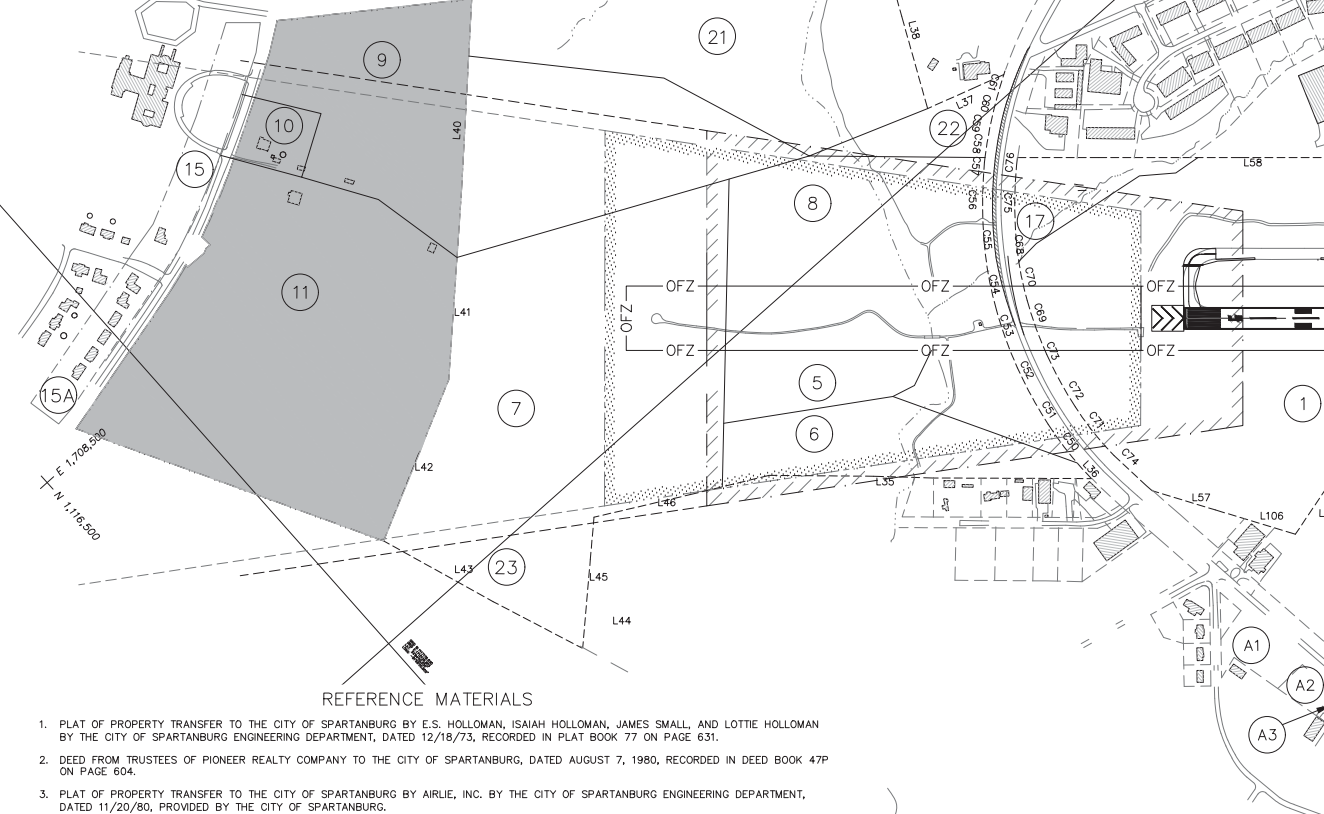


LINE TABLE			LINE TABLE			LINE TABLE			LINE TABLE			LINE TABLE			LINE TABLE														
LINE	LENGTH	BEARING	LINE	LENGTH	BEARING	LINE	LENGTH	BEARING	LINE	LENGTH	BEARING	LINE	LENGTH	BEARING	LINE	LENGTH	BEARING												
L1	40.25	S47°31'29"W	L53	247.47	N65°35'19"W	L91	35.12	N75°13'19"W	L127	94.42	S 70°57'11" E	L163	27.97	N 66°26'26" W	L1	40.25	S47°31'29"W	L53	247.47	N65°35'19"W	L91	35.12	N75°13'19"W	L127	94.42	S 70°57'11" E	L163	27.97	N 66°26'26" W

CURVE TABLE					
CURVE	RADIUS	LENGTH	DELTA	BEARING	CHORD
C77	2129.20	269.45	71°50'3"	N 36°38'39" E	269.27
C78	1157.82	74.23	3°40'24"	N 31°10'56" E	74.22

NOTES:  
 1) THE PROPERTY BOUNDARY INFORMATION DESCRIBED ON THIS MAP WAS COMPILED FROM THE CITED REFERENCES AND ENHANCED BY INFORMATION FROM AERIAL PHOTOGRAPHS AND GEOMETRIC CALCULATIONS. NO FIELD SURVEYS WERE PERFORMED. THIS MAP IS NOT A PLAT OF SURVEY, AND IS NOT SUITABLE FOR RECORDING IN PUBLIC RECORDS AS DOCUMENTATION OF THE TRANSFER OF REAL PROPERTY OWNERSHIP.  
 2) THE TRACT INDICATED AS PARCEL 1 WAS ASSEMBLED FROM VARIOUS TRACTS BY THE CITY OF SPARTANBURG IN THE 1920'S AND 1940'S WITHOUT FEDERAL FUNDING. NO PART OF THIS TRACT IS SUBJECT TO THE PROVISIONS OF THE WAR POWERS ACT.

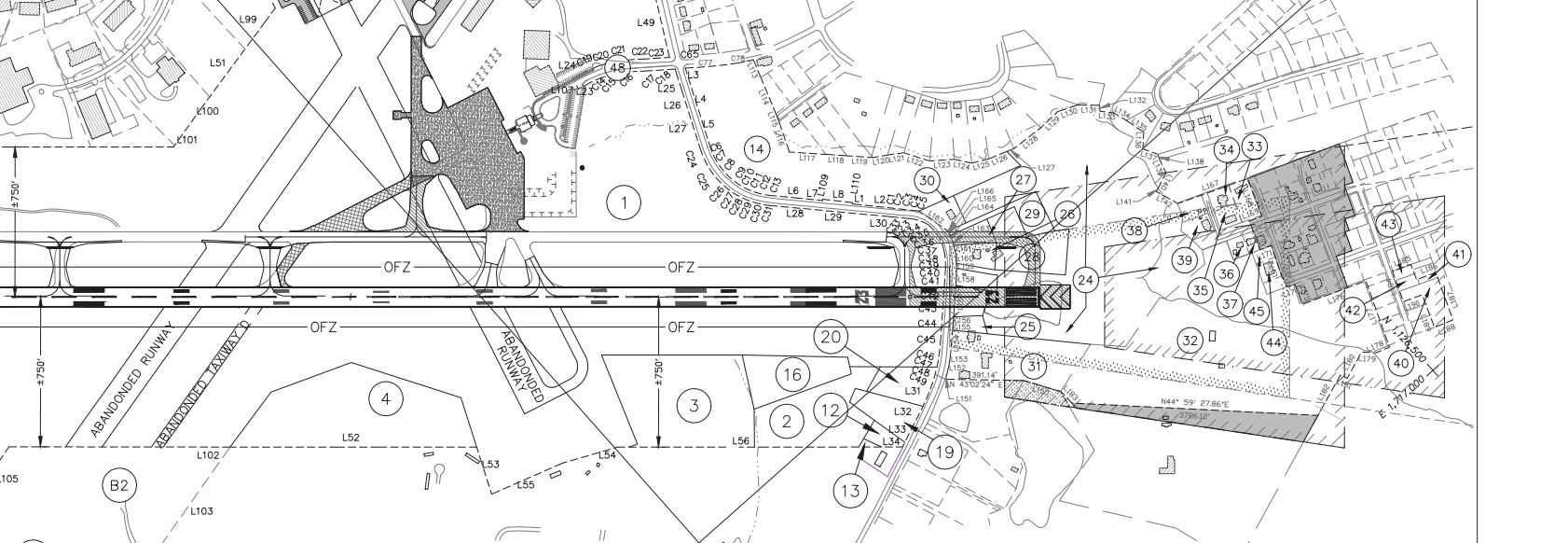


OWNERSHIP INFORMATION				
PARCEL	ACRES	GRANTOR	AIRPORT'S INTEREST	GRANT NUMBER
1	266.9±	VARIOUS	FEE SIMPLE	N/A
A1	1.56	VARIOUS	SOLD	RELEASE 5/23/95
A2	.69	VARIOUS	SOLD	RELEASE 5/23/95
A3	23	VARIOUS	SOLD	RELEASE 5/23/95
A4	.69	VARIOUS	SOLD	RELEASE 5/23/95
B1	10.00	VARIOUS	SOLD	RELEASE 5/23/95
B2	10.02	VARIOUS	SOLD	RELEASE 5/23/95
C1	3.23	VARIOUS	SOLD	RELEASE 3/18/93
C2	2.00	VARIOUS	SOLD	RELEASE 3/18/93
C3	0.21	VARIOUS	SOLD	RELEASE 3/18/93
2	3.75	ISAIAH HOLLOWAN	FEE SIMPLE	ADAP 7-45-0051-01
3	7.13	DR. D.L. SMITH, JR.	FEE SIMPLE	ADAP 7-45-0051-01
4	8.51	LUCIE W. FOSTER	FEE SIMPLE	ADAP 7-45-0051-01
5	5.86	ALLIED REALTY	FEE SIMPLE	ADAP 7-45-0051-01
6	9.80	AIRLIE, INC.	FEE SIMPLE	ADAP 7-45-0051-01
7	15.18	ALLIED REALTY	FEE SIMPLE	ADAP 7-45-0051-01
8	36.87	ALLIED REALTY	FUTURE FEE	N/A
9	14.31	N/F TEDDER	FUTURE FEE	N/A
10	2.22	N/F JOHNSON	FUTURE FEE	N/A
11	23.86	N/F DAVIS	FUTURE FEE	N/A
12	0.35	WILLIE MAE BROWNING	FEE SIMPLE	ADAP 7-45-0051-01
13	0.05	JOE E. SIMPSON	FEE SIMPLE	ADAP 7-45-0051-01
14	5.50	PIONEER REALTY CO.	FEE SIMPLE	ADAP 7-45-0051-01

PARCEL	ACRES	GRANTOR	AIRPORT'S INTEREST	GRANT NUMBER
24	19.89	GLADYS CURETON, et al.	FEE SIMPLE	3-45-0051-12
25	0.39	MICHAEL CURETON & SHARON C. HIDDLESTON	FEE SIMPLE	3-45-0051-12
26	0.53	BETTY MEANS	FEE SIMPLE	3-45-0051-12
27	0.41	BETTY LOUISE F. MEANS	FEE SIMPLE	3-45-0051-12
28	2.01	ELOISE F. FULLER	FEE SIMPLE	3-45-0051-12
29	0.83	THOMAS J. & BERTHA MAE F. HOLLOWAN	FEE SIMPLE	3-45-0051-12
30	0.80	PATRICIA L. LEMORE	FEE SIMPLE	3-45-0051-12
31	3.38	GLADYS CURETON, et al.	FEE SIMPLE	3-45-0051-10

CURVE TABLE					
CURVE	LENGTH	RADIUS	TANGENT	CHORD	CH. BEARING
C1	49.40	644.11	24.71	49.39	S49°30'19"W
C2	24.02	644.11	12.01	24.02	S52°46'14"W
C3	32.47	199.52	16.27	32.44	S60°27'20"W
C4	31.57	199.51	15.82	31.53	S69°36'46"W
C5	2.09	199.51	1.04	2.09	S74°30'00"W

\* SEE CONTINUED TABLE AT BOTTOM OF THIS SHEET



OWNERSHIP INFORMATION				
PARCEL	ACRES	GRANTOR	AIRPORT'S INTEREST	GRANT NUMBER
32	18.72	MT. ZION BAPTIST CHURCH	FEE SIMPLE	NONE
33	0.43	IDA MAE MEADOWS	FEE SIMPLE	NONE
34	0.26	RONALD E. KITBY, JR.	FEE SIMPLE	NONE
35	0.25	JAMES PROCTOR	FEE SIMPLE	3-45-0051-21-2018
36	0.19	KENDRICK L. THOMAS	FEE SIMPLE	3-45-0051-21-2018
37	0.13	MONZLEE BROWN	FEE SIMPLE	NONE
38	0.28	ALFRED MEADOWS	FEE SIMPLE	3-45-0051-18-2013
39	0.33	ALFRED MEADOWS	FEE SIMPLE	3-45-0051-18-2013
40	0.67	FORFEITED LAND COMMISSION	FEE SIMPLE	NONE
41	0.06	SPARTANBURG REAL HOLDINGS	FEE SIMPLE	NONE
42	0.13	FORFEITED LAND COMMISSION	FEE SIMPLE	NONE
43	0.11	FORFEITED LAND COMMISSION	FEE SIMPLE	NONE
44	0.24	ST. JAMES BAPTIST CHURCH	FEE SIMPLE	NONE
45	0.14	ST. JAMES BAPTIST CHURCH	FEE SIMPLE	NONE

OWNERSHIP INFORMATION				
PARCEL	ACRES	GRANTOR	AIRPORT'S INTEREST	GRANT NUMBER
15	1.52	SCHOOL DISTRICT No. 6	FUTURE EASEMENT	N/A
15A	6.56	VARIOUS	FUTURE EASEMENT	N/A
16	2.30	E.S. HOLLOWAN	FEE SIMPLE	ADAP 7-45-0051-01
17	5.70	ALLIED REALTY	FEE SIMPLE	ADAP 7-45-0051-01
18	1.38	M. CURETON	FORMER EASEMENT	N/A
19	1.28	JAMES SMALL	FEE SIMPLE	ADAP 7-45-0051-01
20	1.10	LOTTIE HOLLOWAN	FEE SIMPLE	ADAP 7-45-0051-01
21	25.44	VARIOUS	FEE SIMPLE	ADAP 7-45-0051-01
22	3.71	VARIOUS	FEE SIMPLE	ADAP 7-45-0051-01
23	10.60	VARIOUS	FEE SIMPLE	ADAP 7-45-0051-01
D2	2.00	VARIOUS	SOLD	RELEASE 12/2/97
D3	0.49	VARIOUS	FEE SIMPLE	RELEASE 12/2/97
D4	3.00	VARIOUS	FEE SIMPLE	RELEASE 12/2/97
D5	2.64	VARIOUS	FEE SIMPLE	RELEASE 12/2/97
D6	0.51	VARIOUS	FEE SIMPLE	RELEASE 12/2/97
D7	1.44	VARIOUS	FEE SIMPLE	RELEASE 12/2/97
D8	1.99	VARIOUS	FEE SIMPLE	RELEASE 12/2/97
D9	3.47	VARIOUS	SOLD	RELEASE 12/2/97
D10	7.77	VARIOUS	SOLD	RELEASE 12/2/97
D11	0.53	VARIOUS	FEE SIMPLE	RELEASE 12/2/97
D12	0.62	VARIOUS	FEE SIMPLE	RELEASE 12/2/97
E1	0.24	VARIOUS	FEE SIMPLE	N/A

LEGEND:  
 EXISTING BUILDING (hatched pattern)  
 FUTURE BUILDING (dotted pattern)  
 TREE LINE (dashed line)  
 FLOOD HAZARD AREA LIMIT (thick dashed line)  
 STREAM CENTERLINE (dashed line)  
 PARCEL NUMBERS REFERENCED TO OWNERSHIP INFORMATION TABLE (circled numbers)  
 SHORT-TERM PROPOSED DEVELOPMENT (diagonal hatching)  
 LONG-TERM PROPOSED DEVELOPMENT (solid black)  
 PROPERTY TO BE ACQUIRED (stippled pattern)  
 FUTURE AVIGATION EASEMENT (dotted pattern)  
 AIRPORT PROPERTY LINE (dashed line)  
 ADJOINING PROPERTY LINES (dotted line)  
 RSA - RUNWAY SAFETY AREA (dashed line)

REFERENCE MATERIALS

- PLAT OF PROPERTY TRANSFER TO THE CITY OF SPARTANBURG BY E.S. HOLLOWAN, ISAIAH HOLLOWAN, JAMES SMALL, AND LOTTIE HOLLOWAN BY THE CITY OF SPARTANBURG ENGINEERING DEPARTMENT, DATED 12/18/73, RECORDED IN PLAT BOOK 77 ON PAGE 631.
- DEED FROM TRUSTEES OF PIONEER REALTY COMPANY TO THE CITY OF SPARTANBURG, DATED AUGUST 7, 1980, RECORDED IN DEED BOOK 47P ON PAGE 604.
- PLAT OF PROPERTY TRANSFER TO THE CITY OF SPARTANBURG BY AIRLIE, INC. BY THE CITY OF SPARTANBURG ENGINEERING DEPARTMENT, DATED 11/20/80, PROVIDED BY THE CITY OF SPARTANBURG.
- PLAT OF PROPERTY TRANSFER TO THE CITY OF SPARTANBURG BY CLARK ERWIN CORP. BY THE CITY OF SPARTANBURG ENGINEERING DEPARTMENT, DATED 10/8/75, RECORDED IN PLAT BOOK 78 ON PAGE 320.
- PLAT OF PROPERTY TRANSFER TO THE CITY OF SPARTANBURG BY LUCIE W. FOSTER BY THE CITY OF SPARTANBURG ENGINEERING DEPARTMENT, DATED 11/26/73, PROVIDED BY THE CITY OF SPARTANBURG.
- SURVEY FOR ALLIED ENTERPRISES BY NEIL R. PHILLIPS, DATED JULY 3, 1973, RECORDED IN PLAT BOOK 71 ON PAGE 327. PLAT OF PROPERTY OF AIRLIE, INC. BY GOOCH AND TAYLOR, SURVEYORS, DATED MAY 24, 1960, RECORDED IN PLAT BOOK 40 ON PAGE 562.
- PLAT OF SURVEY OF THE NETTIE H. SMITH LANDS FOR DR. D. LESENE SMITH, JR. BY W.N. WILLIS, DATED FEB. 7, 1950, RECORDED IN PLAT BOOK 25 ON PAGE 104.
- PLAT OF PROPERTY OF THE G.W. DANIEL ESTATE BY GOOCH AND TAYLOR, SURVEYORS, DATED JUNE 15, 1959, RECORDED IN PLAT BOOK 39 ON PAGE 143.
- PLAT OF PROPERTY TRANSFER TO THE CITY OF SPARTANBURG BY DR. D. LESENE SMITH, JR. BY THE CITY OF SPARTANBURG ENGINEERING DEPARTMENT, DATED 12/13/73, PROVIDED BY THE CITY OF SPARTANBURG.
- DEED FROM ALLIED ENTERPRISES, INCORPORATED, DATED SEPTEMBER 19, 1975, RECORDED IN DEED BOOK 43-D ON PAGE 13.
- PLAT OF SURVEY FOR SOUTHPORT ASSOCIATES BY NEIL R. PHILLIPS, P.L.S., DATED SEPT. 21, 1990, RECORDED IN PLAT BOOK 112 ON PAGE 690.
- PLAT OF PROPERTY OF THE CITY OF SPARTANBURG BY GOOCH AND ASSOCIATES, SURVEYORS, DATED MARCH 17, 1987, RECORDED IN PLAT BOOK 101 ON PAGE 721.
- PLAT OF PROPERTY TRANSFER TO THE CITY OF SPARTANBURG BY ALLIED ENTERPRISES BY THE CITY OF SPARTANBURG ENGINEERING DEPARTMENT, DATED 9/12/75, PROVIDED BY THE CITY OF SPARTANBURG.
- SPARTANBURG COUNTY TAX MAP SHEET NUMBERS 7102, 7112, 7-15-16, 6-25-11, 6-21-16, 6-21-15, AND 6-25. ROAD RIGHT OF WAY PLANS FOR FILE NUMBERS 42,2424, 42,148-A, 42,535, 42,269, 42,501, AND 42,993.
- AERIAL PHOTOGRAMMETRIC MAPPING OF THE AIRPORT SITE BY PEARSON ENGINEERING AND GEO-ONE, INC. DATED 2/24/93.
- EXHIBIT 'A' PROPERTY MAP BY THE CITY OF SPARTANBURG ENGINEERING DEPARTMENT, DATED 4/7/88.
- PLAT BY WK DICKSON, TITLED: LAND ACQUISITION BOUNDARY SURVEY FOR SPARTANBURG DOWNTOWN MEMORIAL AIRPORT. DATED: SEPTEMBER 9, 2005.

THE CITY OF SPARTANBURG  
 SPARTANBURG DOWNTOWN MEMORIAL AIRPORT  
 Spartanburg, South Carolina

EXHIBIT 'A' PROPERTY MAP

PEARSON ENGINEERING  
 PLANNERS ENGINEERS SURVEYORS  
 WEST COLUMBIA, SOUTH CAROLINA

DATE: JULY 2001 SCALE: 1" = 400' SHEET: 8 OF 8

NO.	REVISIONS	BY	DATE
3	REVISED TO SHOW LAND ACQUISITIONS	WKD	MAY 2018
2	REVISED TO SHOW APRON & TWY MODS.	WKD	NOV 2012
1	REVISED TO SHOW LAND ACQUISITION	WKD	MARCH 2010