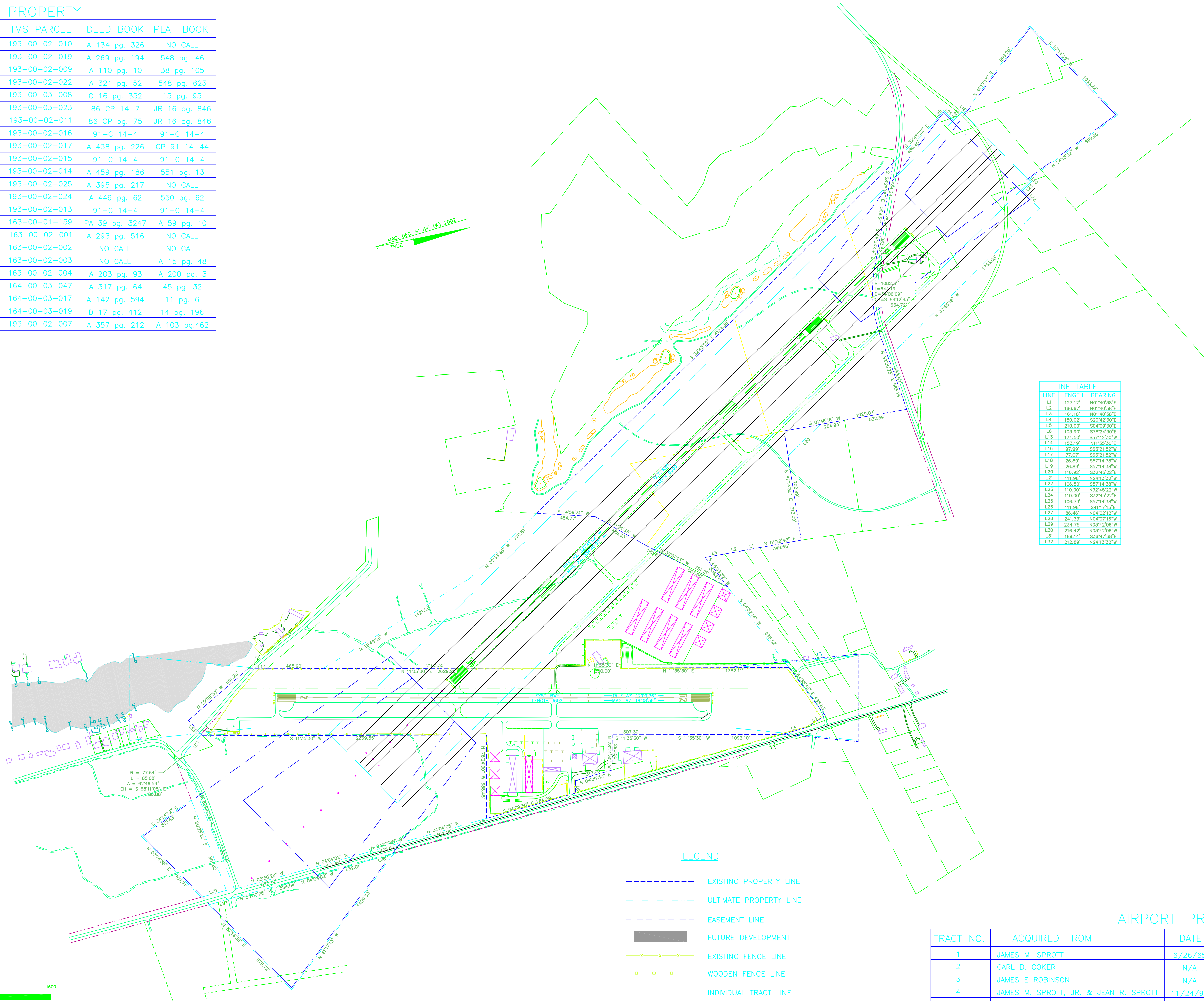


ADJACENT PROPERTY

TRACT NO.	OWNER	TMS PARCEL	DEED BOOK	PLAT BOOK
A	JAMES M. SPROTT, JR.	193-00-02-010	A 134 pg. 326	NO CALL
B	PRECISION AIR, INC.	193-00-02-019	A 269 pg. 194	548 pg. 46
C	PRECISION AIR, INC.	193-00-02-009	A 110 pg. 10	38 pg. 105
D	PRECISION AIR, INC.	193-00-02-022	A 321 pg. 52	548 pg. 623
E	UNION CYPRESS CHURCH	193-00-03-008	C 16 pg. 352	15 pg. 95
F	GEORGE ROBINSON	193-00-03-023	86 CP 14-7	JR 16 pg. 846
G	MARY R. McKNIGHT	193-00-02-011	86 CP pg. 75	JR 16 pg. 846
H	GEORGE ROBINSON, JR.	193-00-02-016	91-C 14-4	91-C 14-4
I	ALBERTIS CARTER	193-00-02-017	A 438 pg. 226	CP 91 14-44
J	EVELYN COOPER	193-00-02-015	91-C 14-4	91-C 14-4
K	NED OR DEBORAH McINTOSH	193-00-02-014	A 459 pg. 186	551 pg. 13
L	NED & DEBORAH McINTOSH	193-00-02-025	A 395 pg. 217	NO CALL
M	HARRISON L. McINTOSH, III	193-00-02-024	A 449 pg. 62	550 pg. 62
N	WILSON ROBINSON	193-00-02-013	91-C 14-4	91-C 14-4
O	WYBOO GOLF CLUB L.P.	163-00-01-159	PA 39 pg. 3247	A 59 pg. 10
P	WILLIAM JAMES ROBINSON	163-00-02-001	A 293 pg. 516	NO CALL
Q	NO CALL	163-00-02-002	NO CALL	NO CALL
R	RUFUS STUKES, est.	163-00-02-003	NO CALL	A 15 pg. 48
S	SHIPERY STUKES	163-00-02-004	A 203 pg. 93	A 200 pg. 3
T	CARL & CELIA HORNE EZZELL	164-00-03-047	A 317 pg. 64	45 pg. 32
U	RUTH BELTON & ARNOLD CAIN	164-00-03-017	A 142 pg. 594	11 pg. 6
V	WILLIAM R	164-00-03-019	D 17 pg. 412	14 pg. 196
W	JAMES W. & MARY K. STOIA	193-00-02-007	A 357 pg. 212	A 103 pg.462
X	WILLIE J. CALHOUN			

MAG. DEC. 6° 58' (W) 2002  
TRUE

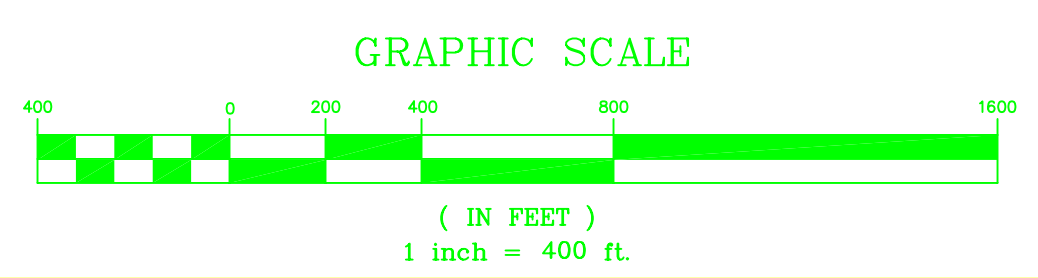


LINE	LENGTH	BEARING
L1	122.12'	N0140'38"E
L2	166.67'	N0140'38"E
L3	161.10'	N0140'38"E
L4	180.02'	S204'32"E
L5	210.00'	S04'09'30"E
L6	104.90'	S78'24'30"E
L13	174.50'	S57'42'30"W
L14	153.19'	N11'35'30"E
L16	97.99'	S83'21'52"W
L17	72.07'	S63'21'54"W
L18	26.89'	S57'14'38"W
L19	26.89'	S57'14'38"W
L20	116.92'	S32'45'21"E
L21	111.98'	N24'13'32"W
L22	106.50'	S27'14'38"W
L23	110.00'	N32'45'22"W
L24	110.00'	S32'45'22"E
L25	106.73'	S57'14'38"W
L26	111.98'	S41'17'13"E
L27	86.46'	N04'02'12"W
L28	241.33'	N04'07'16"W
L29	234.75'	N03'42'08"W
L30	216.42'	N03'42'08"W
L31	189.14'	S36'17'58"E
L32	212.89'	N24'13'32"W

- LEGEND**
- EXISTING PROPERTY LINE
  - ULTIMATE PROPERTY LINE
  - EASEMENT LINE
  - FUTURE DEVELOPMENT
  - - - EXISTING FENCE LINE
  - - - WOODEN FENCE LINE
  - - - INDIVIDUAL TRACT LINE
  - ULTIMATE RUNWAY PROTECTION ZONE (RPZ)

AIRPORT PROPERTY

TRACT NO.	ACQUIRED FROM	DATE	INTEREST	ACREAGE	PROJECT NO.
1	JAMES M. SPROTT	6/26/65	FEE SIMPLE	67.76	AIP
2	CARL D. COKER	N/A	FEE SIMPLE	24.60	LOCAL
3	JAMES E. ROBINSON	N/A	FEE SIMPLE	34.29	LOCAL
4	JAMES M. SPROTT, JR. & JEAN R. SPROTT	11/24/97	FEE SIMPLE	6.42	LOCAL
5	FOREST VILLA, INC.	N/A	FEE SIMPLE	4.23	LOCAL
6	FOREST VILLA, INC.	1/6/99	FEE SIMPLE	26.59	LOCAL



REV. NO.	DESCRIPTION	DATE

<p>PROJECT MANAGER GAV</p> <p>DRAWN BY RBT</p> <p>APPROVED BY SEW</p> <p>FILE NUMBER 10178.00.CA</p> <p>PLOT DATE 10/178 BASE</p>	<p>DRAWING SCALE 1" = 400'</p> <p>PROJECT DATE APRIL 2005</p> <p>PROJECT NUMBER 10178.00.CA</p> <p>PLAT DATE</p>	<p><b>WK DICKSON</b> Engineers • Planners • Surveyors Landscape Architects</p> <p>501 COMMERCE DRIVE, NE COLUMBIA, SC 29223 (803) 786-4261</p> <p>Atlanta, GA    Hickory, NC Charlotte, NC    Raleigh, NC Columbia, SC    Wilmington, NC</p>	<p>RELEASED FOR APPROVALS</p> <p>BIDDING</p> <p>CONSTRUCTION</p> <p>RECORD DWG.</p>	<p>DATE</p>
---	--	--	---	-------------

2005

SANTEE COOPER REGIONAL AIRPORT  
CLARENDON COUNTY  
MANNING, SOUTH CAROLINA

EXHIBIT "A"