

**CUB - JIM HAMILTON - L B OWENS**

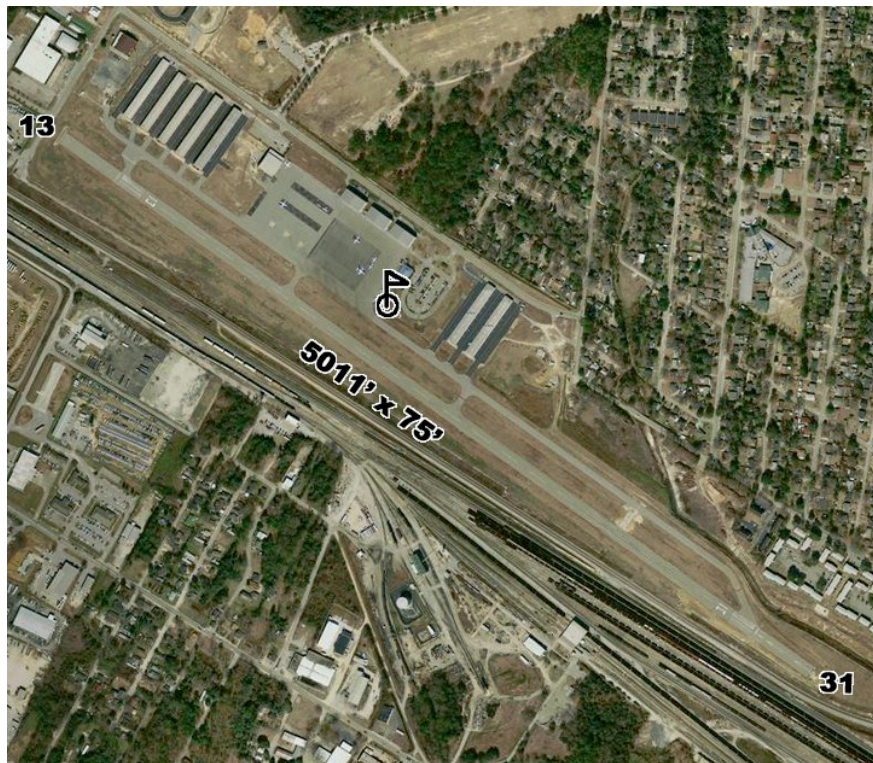
CHARLOTTE SECTIONAL

12/28/2023

**COLUMBIA - 18**

**Latitude:** 33° 58' 13.7000" N

**Longitude:** 80° 59' 42.9000" W



Elevation - 193' MSL

Mag Var - 07° W

Runway						Edge	Approach	Traffic
ID	Length	Width	Surface	VGSI	REILS	Lights	Lights	Pattern
13/31	5011'	75'	ASPH	13/31	13/31	MED		13 - RH

Runway Pavement Strength					Navigation			
Runway	SW	DW	DTW	DDTW	IDENT	Type	FREQ	Direct/Dist
13/31	44.5	66.0			CAE	VORTAC	114.70	r025° 7.4 NM to fld

Communications				ATC		AWOS/ASOS	
UniCom	CTAF	GCO	RCO	FREQ	FAA ID	FREQ	Phone
123.075	123.075		124.4	133.4	CAE	118.675	(803) 929-0665

<b>Manager</b> Peter Cevallos	<b>Storage</b> HGR,TIE	<b>Repairs</b> Y
<b>GPS</b> 1400 Jim Hamilton Blvd	<b>Landing Fee</b> N	<b>Oxygen</b> Y
<b>Address</b> Columbia, SC 29205	<b>Lighting Sched</b> SEE RMK	<b>Fuel Type</b> 100LL, JET A
<b>Phone</b> (803) 766-5617		
<b>Fax</b>	<b>Att Schedule</b> Daily 0600-2000 (EDT) / 0600-1900 (EST)	
<b>Email</b> cevallos.peter@richlandcountysc.gov	<b>Remarks</b> Avoid noise sensitive area north of airport below 1500'. No northbound departure turn below 1500'. APU available. Ramp Fee Service after hours (803) 771-7915 RWY 31 has 400' displaced threshold ACTVT MIRL AND REIL - CTAF COMPASS CAL PAD Pattern traffic squawk 0201 www.FlyKCUB.com	
<b>FBO Phone/Fax</b> Eagle Aviation (803) 771-7915		