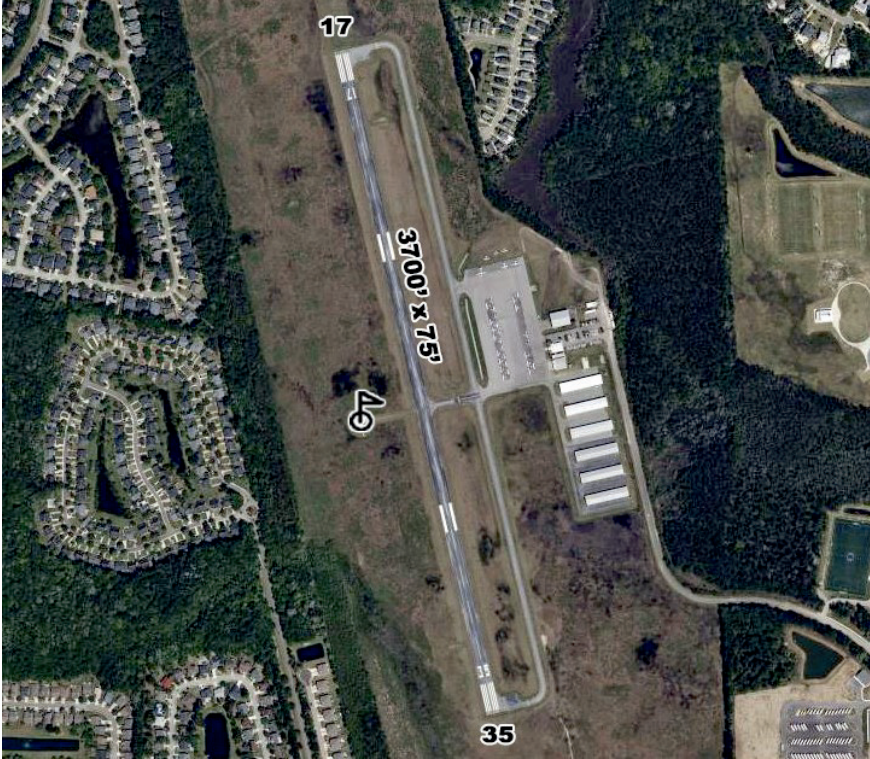


**LRO - MT PLEASANT RGNL-FAISON FIELD**

CHARLOTTE SECTIONAL  
12/28/2023

**MOUNT PLEASANT - 47**

**Latitude:** 32° 53' 52.2000" N  
**Longitude:** 79° 46' 58.3000" W



Elevation - 11' MSL

Mag Var - 08° W

Runway						Edge	Approach	Traffic
ID	Length	Width	Surface	VGSI	REILS	Lights	Lights	Pattern
17/35	3700'	75'	ASPH	17/35		MED		35 - RH

Runway Pavement Strength					Navigation			
Runway	SW	DW	DTW	DDTW	IDENT	Type	FREQ	Direct/Dist
17/35	12.5				CHS	VORTAC	113.50	r094° 12.9 NM to fld

Communications				ATC		AWOS/ASOS	
UniCom	CTAF	GCO	RCO	FREQ	FAA ID	FREQ	Phone
122.700	122.700			135.8	CHS	118.625	(843) 849-0438

<b>Manager</b> Elliott Summey	<b>Storage</b> TIE	<b>Repairs</b> Y
<b>GPS</b> 700 Faison Rd	<b>Landing Fee</b> N	<b>Oxygen</b> N
<b>Address</b> Mount Pleasant, SC 29466	<b>Lighting Sched</b> SEE RMK	<b>Fuel Type</b> 100LL, JET A
<b>Phone</b> (843) 767-7000		
<b>Fax</b>	<b>Att Schedule</b> Daily 0600-2000	
<b>Email</b> esummey@iflychs.com	<b>Remarks</b> Ramp Fee	
<b>FBO Phone/Fax</b>	ACTVT MIRL RWY 17/35 - CTAF.	
Charleston County Aviation Authority		
(843) 767-7212		