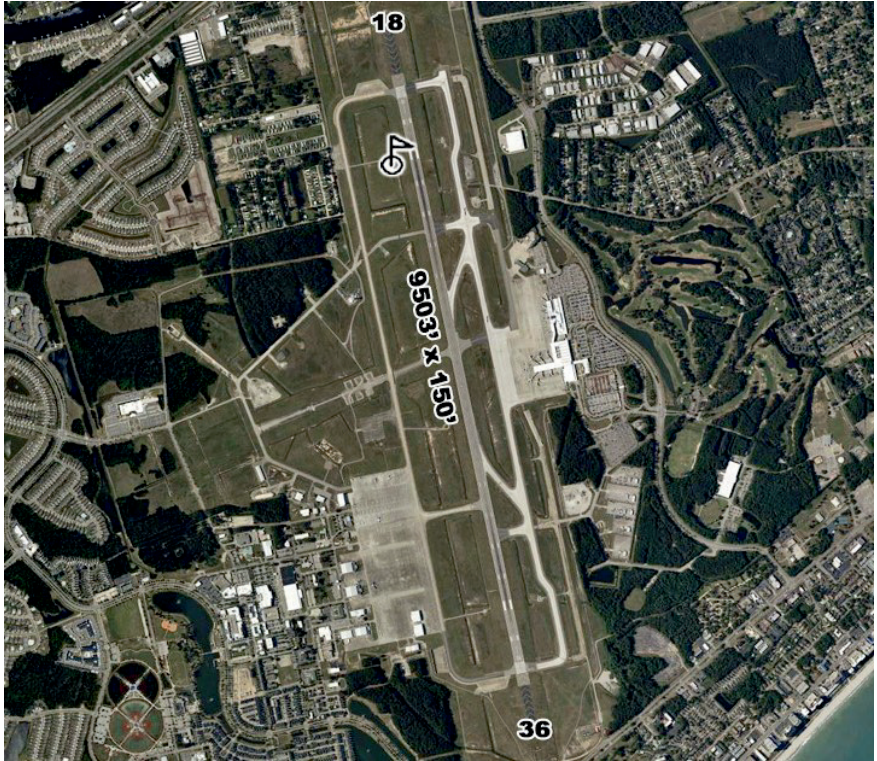


MYR - MYRTLE BEACH INTL
CHARLOTTE SECTIONAL
 12/28/2023

MYRTLE BEACH - 48

Latitude: 33° 40' 47.0680" N
Longitude: 78° 55' 41.9570" W



Elevation - 25' MSL

Mag Var - 09° W

Runway						Edge	Approach	Traffic
ID	Length	Width	Surface	VGSI	REILS	Lights	Lights	Pattern
18/36	9503'	150'	ASPH	18/36		HIGH	18/36	18 - RH

Runway Pavement Strength					Navigation			
Runway	SW	DW	DTW	DDTW	IDENT	Type	FREQ	Direct/Dist
18/36	120.0	233.0	424.0	943.0	CRE	VORTAC	114.40	r235° 13.0 NM to fld

Communications			ATIS	ATC		RCO	APP/DEP	AWOS/ASOS	
Tower	GRND	CL DEL	FREQ	FREQ	FAA ID	FREQ	BRNG/FREQ	FREQ	Phone
128.45	120.3	120.3	123.925	119.2	MYR		322-170/119.2	123.925	(843) 238-0335
				127.4	MYR		171-321/127.4		

Manager Judi Olmstead	Storage TIE	Repairs Y
GPS 1100 Jetport Rd	Landing Fee	Oxygen N
Address Myrtle Beach, SC 29577	Lighting Sched SEE RMK	Fuel Type 100LL, JET A
Phone (843) 839-7359	Att Schedule ALL/ALL/0600-2100	
Fax (843) 626-9096	Remarks UniCom 122.95; Ramp Fee	
Email olmsteaj@horrycountysc.org	Class C Airspace 0600-2300	
FBO Phone/Fax	other times Class G	
	IF ATCT CLSD ACTVT HIRL CTAF 128.45	
	FBO OFFERS FS/SS 100LL, FS JET A	