

RBW - LOWCOUNTRY RGNL

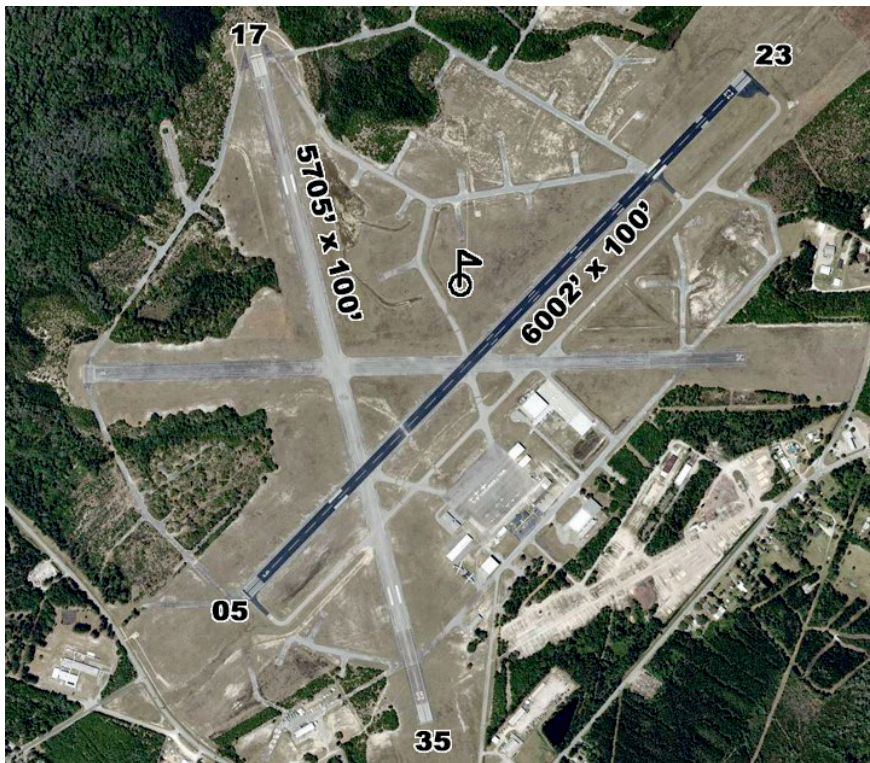
CHARLOTTE SECTIONAL

12/28/2023

WALTERBORO - 66

Latitude: 32° 55' 15.6000" N

Longitude: 80° 38' 26.2000" W



Elevation - 101' MSL

Mag Var - 07° W

Runway						Edge	Approach	Traffic
ID	Length	Width	Surface	VGSI	REILS	Lights	Lights	Pattern
05/23	6002'	100'	ASPH-CONC	05/23	23	MED	23	Standard
17/35	5705'	100'	ASPH-CONC					Standard

Runway Pavement Strength					Navigation				
Runway	SW	DW	DTW	DDTW	IDENT	Type	FREQ	Direct/Dist	
05/23	70.0	101.0			CHS	VORTAC	113.50	r278° 30.5 NM to fld	
17/35	33.5	50.5							

Communications				ATC		AWOS/ASOS	
UniCom	CTAF	GCO	RCO	FREQ	FAA ID	FREQ	Phone
122.800	122.800			120.7	CHS	118.725	(843) 538-3575

Manager Bert Duffie	Storage HGR,TIE	Repairs Y
GPS 537 Aviation Way	Landing Fee N	Oxygen N
Address Walterboro, SC 29488	Lighting Sched SEE RMK	Fuel Type 100LL, JET A
Phone (843) 549-2549	Att Schedule Mon-Sat 0800-1800 / Sun 0800-1700	
Fax (843) 549-1444	Remarks MIRL DUSK UNTIL 2200	
Email airport@colletoncounty.org		AFTER 2200 PCL CTAF
FBO Phone/Fax		PAPI RWY 5&23. ODALS RWY 23.
Ace Basin Aviation (843) 893-6968		SELF SERVICE 100LL
DB Aerotech (843) 441-1187		
Lowcountry Aviation (855) 435-9522		
Lowcountry Regional Airport (843) 549-2549		
Swamp Fox Avionics (843) 782-4006		