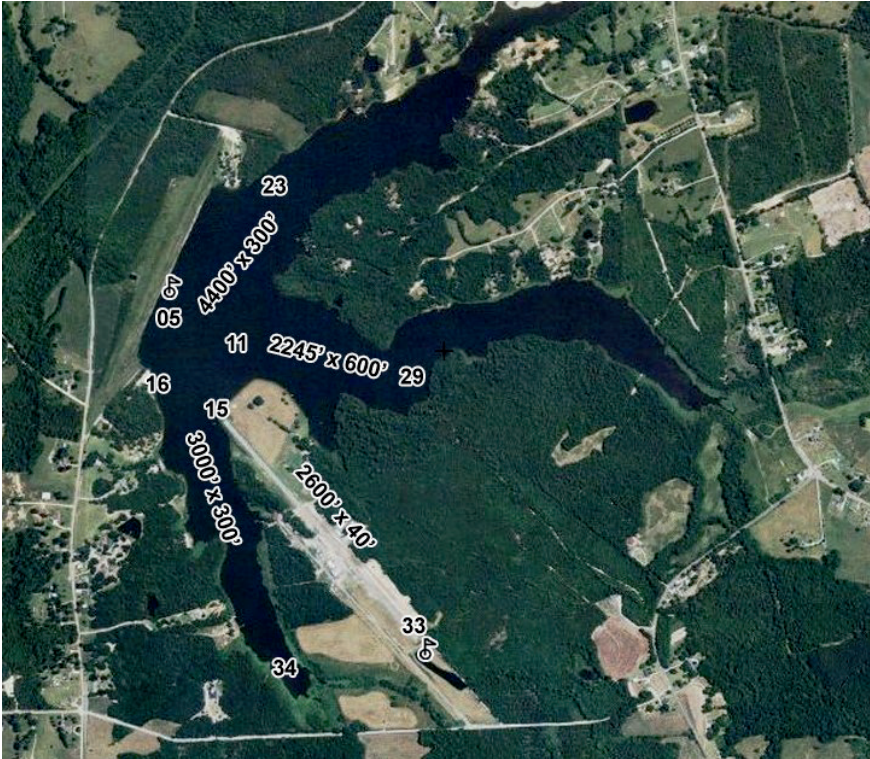


T73 - KIRK AIR BASE
 CHARLOTTE SECTIONAL
 12/28/2023

LANCASTER - 39

Latitude: 34° 40' 27.5410" N
Longitude: 80° 40' 56.2470" W



Elevation - 578' MSL

Mag Var - 08° W

Runway						Edge	Approach	Traffic
ID	Length	Width	Surface	VGSI	REILS	Lights	Lights	Pattern
05W/23W	4400'	300'	WATER					Standard
11W/29W	2245'	600'	WATER					Standard
15/33	2600'	40'	ASPH			LOW		Standard
16W/34W	3000'	300'	WATER					Standard

Runway Pavement Strength					Navigation			
Runway	SW	DW	DTW	DDTW	IDENT	Type	FREQ	Direct/Dist
05W/23W					CTF	VOR/DME	114.55	r277° 20.2 NM to fld
11W/29W								
15/33	8.0							
16W/34W								

Communications				ATC		AWOS/ASOS	
UniCom	CTAF	GCO	RCO	FREQ	FAA ID	FREQ	Phone

122.900

Manager James B. Kirk
GPS 1007 Kirk Air Base Rd
Address Lancaster, SC 29720
Phone (803) 286-8800
Fax
Email kirkairbase@comporium.net
FBO Phone/Fax

Storage TIE
Landing Fee N
Lighting Sched SEE RMK
Repairs Y
Oxygen N
Fuel Type 100LL

Att Schedule MON-SAT 0800-DUSK
Remarks water lanes not marked- lengths change with water levels, contact manager.
 FOR LIRL RWY 15/33 CALL (803) 286-8800.
 Private Apt. - Public Use
 100LL available 24/7