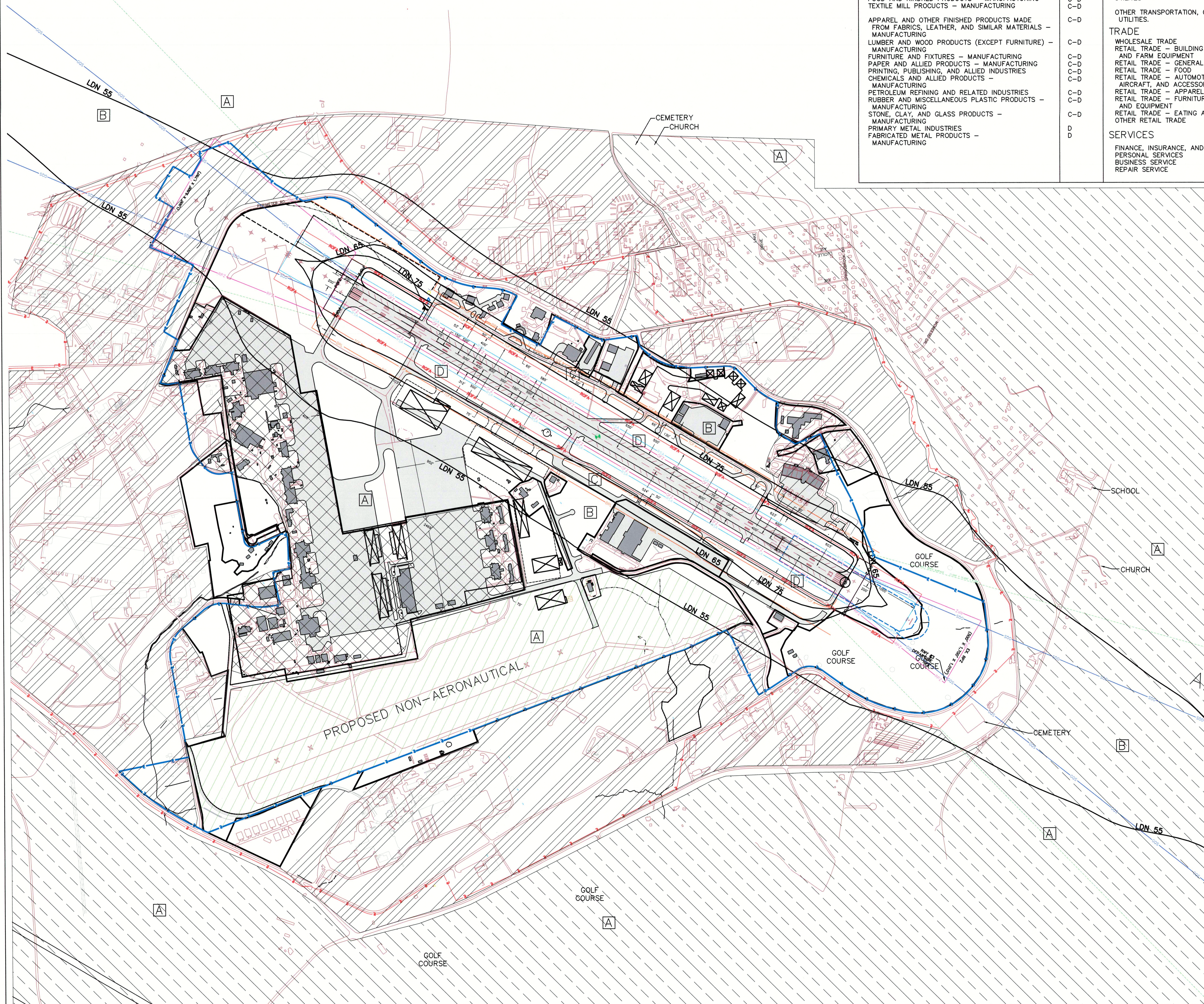


LOCKHEED MARTIN	ARMY NATIONAL GUARD
RESIDENTIAL	COMMERCIAL

LAND USE GUIDANCE (LUG) CHART					
LAND USE	SUGGESTED LUG ZONE	LAND USE	SUGGESTED LUG ZONE	LAND USE	SUGGESTED LUG ZONE
<b>RESIDENTIAL</b>	A-B	<b>MANUFACTURING (CONTINUED)</b>		<b>SERVICES (CONTINUED)</b>	
HOUSEHOLD UNITS		HOUSEHOLD UNITS		PROFESSIONAL SERVICES	B-C
SINGLE UNITS - DETACHED	A	PROFESSIONAL, SCIENTIFIC, AND CONTROLLING INSTRUMENTS; PHOTOGRAPHIC AND OPTICAL GOODS; WATCHES & CLOCKS - MANUFACTURING	B	CONTRACT CONSTRUCTION SERVICES	C
SINGLE UNITS - SEMI ATTACHED	A			GOVERNMENTAL SERVICES	A-B
SINGLE UNITS - ATTACHED ROW	B			EDUCATIONAL SERVICES	A,B,C
				MISCELLANEOUS SERVICES	
TWO UNITS - SIDE BY SIDE	A	MISCELLANEOUS MANUFACTURING	C-D	<b>CULTURAL, ENTERTAINMENT, AND RECREATIONAL</b>	
TWO UNITS - ONE ABOVE THE OTHER	A			CULTURAL ACTIVITIES AND NATURE EXHIBITIONS	A
APARTMENTS - WALK UP	B-C	<b>TRANSPORTATION COMMUNICATION AND UTILITIES</b>		PUBLIC ASSEMBLY	A
APARTMENTS - ELEVATOR	B			AMUSEMENTS	C-C
GROUP QUARTERS	A-B	RAILROAD, RAPID RAIL TRANSIT AND STREET RAILWAY TRANSPORTATION	D	RECREATIONAL ACTIVITIES	A
RESIDENTIAL HOTELS	A			RESORTS AND GROUP CAMPS	A,B,C
MOBILE HOME PARKS OR COURTS	A	MOTOR VEHICLE TRANSPORTATION	D	PARKS	A-B
TRANSIENT LODGINGS	B	AIRCRAFT TRANSPORTATION	D	OTHER CULTURAL, ENTERTAINMENT, AND RECREATIONAL	
OTHER RESIDENTIAL	C	MARINE CRAFT TRANSPORTATION	D		
		HIGHWAY AND STREET RIGHT-OF-WAY	D		
		AUTOMOBILE PARKING	D		
		COMMUNICATIONS	A,B,C,D		
		UTILITIES	D		
<b>MANUFACTURING</b>		OTHER TRANSPORTATION, COMMUNICATION AND UTILITIES	A,B,C,D		
FOOD AND KINDRED PRODUCTS - MANUFACTURING	C-D				
TEXTILE MILL PRODUCTS - MANUFACTURING	C-D	<b>TRADE</b>			
APPAREL AND OTHER FINISHED PRODUCTS MADE FROM FABRICS, LEATHER, AND SIMILAR MATERIALS - MANUFACTURING	C-D	WHOLESALE TRADE	C-D		
LUMBER AND WOOD PRODUCTS (EXCEPT FURNITURE) - MANUFACTURING	C-D	RETAIL TRADE - BUILDING MATERIALS, HARDWARE AND FARM EQUIPMENT	C		
FURNITURE AND FIXTURES - MANUFACTURING	C-D	RETAIL TRADE - GENERAL MERCHANDISE	C		
PAPER AND ALLIED PRODUCTS - MANUFACTURING	C-D	RETAIL TRADE - FOOD	C		
PRINTING, PUBLISHING, AND ALLIED INDUSTRIES	C-D	RETAIL TRADE - AUTOMOTIVE, MARINE CRAFT, AIRCRAFT, AND ACCESSORIES	C		
CHEMICALS AND ALLIED PRODUCTS - MANUFACTURING	C-D	RETAIL TRADE - APPAREL AND ACCESSORIES	C		
PETROLEUM REFINING AND RELATED INDUSTRIES	C-D	RETAIL TRADE - FURNITURE, HOME FURNISHINGS AND EQUIPMENT	C-D		
RUBBER AND MISCELLANEOUS PLASTIC PRODUCTS - MANUFACTURING	C-D	RETAIL TRADE - EATING AND DRINKING			
STONE, CLAY, AND GLASS PRODUCTS - MANUFACTURING	C-D	OTHER RETAIL TRADE			
PRIMARY METAL INDUSTRIES	D	<b>SERVICES</b>			
FABRICATED METAL PRODUCTS - MANUFACTURING	D	FINANCE, INSURANCE, AND REAL ESTATE SERVICES	B		
		PERSONAL SERVICES	B		
		BUSINESS SERVICES	B		
		REPAIR SERVICES	C		



- NOTES:**
- LAND USE GUIDANCE CHART AND ZONE DESCRIPTIONS FROM AIRPORT LAND USE COMPATIBILITY PLANNING, AC-150/5020-1, PAGES 1,2,3, AND 4 OF APPENDIX 1 AND FAR PART 150, JULY 18, 1985.
  - NOISE CONTOURS GENERATED USING FAA'S INTEGRATED NOISE MODEL, USING THE 2033 ACTIVITY LEVELS AND CRITICAL AIRCRAFT.
  - LAND USES RECOMMENDED ON THIS PLAN ARE BASED ON AIRCRAFT NOISE LEVELS. HEIGHT RESTRICTIONS ARE BASED ON FAR PART 77 AND ARE INCLUDED ON SHEET 3 AND 4, "AIRPORT AIRSPACE PLAN."
  - SECTION 8.6 OF THE GREENVILLE COUNTY, SC CODE OF ORDINANCES DEFINES HEIGHT AND ZONING RESTRICTIONS FOR ZONES KNOWN AS "AP" OR AIRPORT PROTECTIVE AREAS.

LEGEND	
NOISE CONTOUR	LDN 55
AIRPORT PROPERTY LINE	---
OTHER PROPERTY LINE	---
EXST. EASEMENT LINE	---
ULT. EASEMENT LINE	---

LAND USE GUIDANCE	
LUG ZONE	AVERAGE DAY NIGHT SOUND LEVEL (LDN)
	LDN 75 or GREATER
D	LAND SHOULD BE RESERVED FOR ACTIVITIES THAT CAN TOLERATE A HIGH LEVEL OF SOUND EXPOSURE SUCH AS SOME AGRICULTURAL, INDUSTRIAL, AND COMMERCIAL USES. NO RESIDENTIAL DEVELOPMENTS OF ANY TYPE ARE RECOMMENDED. SOUND SENSITIVE ACTIVITIES SUCH AS SCHOOLS, OFFICES, HOSPITALS, CHURCHES, AND LIKE ACTIVITIES SHOULD NOT BE CONSTRUCTED IN THIS AREA UNLESS NO ALTERNATIVE LOCATION IS POSSIBLE. ALL REGULARLY OCCUPIED STRUCTURES SHOULD CONSIDER SOUND CONTROL IN DESIGN.
	LDN 65 - 75
C	ACTIVITIES WHERE UNINTERRUPTED COMMUNICATION IS ESSENTIAL SHOULD CONSIDER SOUND EXPOSURE IN DESIGN. GENERALLY, RESIDENTIAL DEVELOPMENT IS NOT CONSIDERED. A SUITABLE USE ALTHOUGH MULTIFAMILY DEVELOPMENTS WHERE SOUND CONTROL FEATURES HAVE BEEN INCORPORATED IN BUILDING DESIGN MIGHT BE CONSIDERED. OPEN-AIR ACTIVITIES AND OUTDOOR LIVING WILL BE AFFECTED BY AIRCRAFT SOUND. THE CONSTRUCTION OF AUDITORIUMS, SCHOOLS, CHURCHES, HOSPITALS, THEATERS, AND LIKE ACTIVITIES SHOULD BE AVOIDED WITHIN THIS ZONE WHERE POSSIBLE.
	LDN 55 - 65
B	FEW ACTIVITIES WILL BE AFFECTED BY AIRCRAFT SOUNDS, ALTHOUGH BUILDING DESIGNS FOR ESPECIALLY SOUND SENSITIVE ACTIVITIES SUCH AS AUDITORIUMS, CHURCHES, SCHOOLS, HOSPITALS, AND THEATERS SHOULD CONSIDER SOUND CONTROL. IN AREAS CLOSEST TO THE AIRPORT, DETAILED STUDIES BY QUALIFIED PERSONNEL ARE RECOMMENDED FOR OUTDOOR AMPHITHEATERS AND LIKE PLACES OF PUBLIC ASSEMBLY IN THE GENERAL VICINITY OF THE AIRPORT.
	LDN 55 and LESS
A	CLEARLY ACCEPTABLE NOISE LEVEL. NO SPECIAL CONSIDERATIONS REQUIRED.

