



2025
SOUTH CAROLINA
AIRPORT DIRECTORY
AND PILOT'S GUIDE

Hilton Head Island Airport



SOUTH CAROLINA
AERONAUTICS

CONTENTS

Table of Contents	I
Message from the Executive Director of the SC Aeronautics Commission	II
Message from the Governor	III
SC Aeronautics Commission Members	IV
Federal Aviation Administration Directory	V
South Carolina Airport Manager's Directory	VI
Airport Location Identifiers	VII
Airports and Cities	VIII
Automated Weather Observation Stations	IX-X
Key to Airport Information	XI-XII
VFR Visibility and Cloud Minimums	XIII
Temperature Conversion	XIV
Airports: Photographs and Facility Data (listed alphabetically by city)	1-66
Flight Planning	Inside back cover

Cover Image

2024 has been a busy year for airport construction projects in South Carolina! The cover depicts an architect rendering of the terminal expansion project currently under construction at the Hilton Head Island Airport. The new \$45.1 million expansion of the facility will almost triple the size of the existing terminal to meet the growing needs of passengers traveling to and from Hilton Head Island (HXD). New terminal building projects are also underway at the Lancaster County – McWhirter Field (LKR) and Laurens County (LUX) airports.

Greetings:

The South Carolina Aeronautics Commission (SCAC) has prepared and distributed this airport directory for the purpose of making your flights in South Carolina safer and more enjoyable.

The information contained was acquired during surveys and inspections conducted by SCAC staff. Airports listed in the directory are either publicly or privately owned and are available for public use. Updates to the directory are posted on our website at aeronautics.sc.gov.

Due to constantly changing airport information, SCAC assumes no responsibility for any action taken by a pilot on the basis of information contained herein. The publisher assumes no responsibility for the accuracy of the information presented. Pilots are reminded that it is their responsibility to verify information by checking Federal Aviation Administration Notices to Airmen and the Aeronautical Information Manual.

SCAC welcomes any suggestions to improve the quality of the directory.

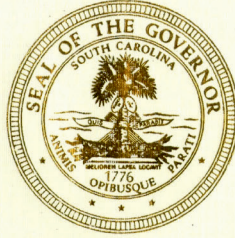
Safe flying,



Gary W. Siegfried

Gary W. Siegfried, PE
Executive Director
South Carolina Aeronautics Commission

2553 Airport Boulevard, West Columbia, South Carolina 29170
(803) 896-6262
aeronautics.sc.gov



HENRY DARGAN McMASTER
GOVERNOR

Dear Friends,

Public-use airports located throughout the Palmetto State are a vital part of South Carolina's economy and infrastructure. From trade and tourism to business and recreation, airfields are essential to both our industries and residents.

Issued each year by the South Carolina Aeronautics Commission, the *South Carolina Airport Directory and Pilots Guide* provides a wealth of information about airport runways and support facilities across the state. It is an easy-to-use resource for pilots navigating our airspace, and we hope it is helpful to all.

Peggy and I appreciate your interest in South Carolina's air travel opportunities, and we wish you a safe and enjoyable flight.

Yours very truly,

A handwritten signature in blue ink, which appears to read "Henry D. McMaster". The signature is fluid and cursive, written over a light blue horizontal line.

Henry Dargan McMaster

HDM/kt

COMMISSION MEMBERS



Chairman, At-Large

Delphin A. Gantt, Jr.

Phone (803) 479-7199 Email: chairman@aeronautics.sc.gov



District 1

Anne Esposito

Phone (843) 597-2236 Email: district1@aeronautics.sc.gov

District Airports: ARW, DYB, HXD, JZI, LRO, MKS



District 2

Denise Bryan

Phone (803) 635-1058 Email: district2@aeronautics.sc.gov

District Airports: 1DS, 6JO, ALK, BNL, CAE, S17



District 3

Skeets Cooper

Phone (864) 230-5799 Email: district3@aeronautics.sc.gov

District Airports: 6J4, 6J6, AND, CEU, EOE, GRD, LQK, LUX, S19



District 4

Terry Connorton

Phone (864) 525-3727 Email: district4@aeronautics.sc.gov

District Airports: 33A, GMU, GSP, GYH, SPA



District 5

Charles D. "Doug" Barnes

Phone (803) 287-5900 Email: district5@aeronautics.sc.gov

District Airports: 35A, 52J, CDN, DCM, FDW, LKR, SMS, T73, UZA



District 6

Marco Cavazzoni

Phone (843) 822-3637 Email: district6@aeronautics.sc.gov

District Airports: 3J0, 3J1, 51J, 5J5, 6J2, 7S1, 99N, AQX, CHS, CKI, CUB, MNI, OGB, RBW



District 7

Chris Bethea

Phone (843) 283-8484 Email: district7@aeronautics.sc.gov

District Airports: 2Q0, 58J, 5J9, 6J7, 9W9, BBP, CQW, CRE, DLC, FLO, GGE, HVS, HYW, MAO, MYR, PHH, PYG, S79, UDG



Executive Director

Gary Siegfried

Phone (803) 896-6262 Email: gsiegfried@aeronautics.sc.gov

FEDERAL AVIATION ADMINISTRATION OFFICES

Administrator

Federal Aviation Administration
800 Independence Avenue
Washington, DC 20591
Phone: (202) 267-3111

Regional Administrator

Southern Region Headquarters
Federal Aviation Administration
PO Box 20636
Atlanta, GA 30320-0631
Phone: (404) 305-5002

FAA Atlanta Airport District Office

Federal Aviation Administration
1701 Columbia Avenue
Suite 220
College Park, GA 30337-2747
Phone: (404) 305-6799

FAA Columbia Flight Standards District Offices

Federal Aviation Administration
125B Summer Lake Drive
West Columbia, SC 29170
Phone: (803) 765-5931

Flight Service

Leidos Flight Service
Phone: 1-(800) WX BRIEF
www.1800wxbrief.com

AIRPORT MANAGER'S DIRECTORY

Airport Name	Name	Phone
7 OAKS FLIGHT PARK	Larry Shumard	(208) 794-6052
AIKEN RGNL	Chris McCauley	(803) 502-4860
ALLENDALE COUNTY	Lonnie Browning	(803) 584-3801
ANDERSON RGNL	Brett Garrison	(864) 260-4163
BAMBERG COUNTY	Joey Preston	(803) 245-5191
BARNWELL RGNL	Brandon Chavis	(803) 259-1090
BEAUFORT EXECUTIVE	Eric Townsend	(843) 592-1378
BERKELEY COUNTY	Stacy Thomas	(843) 719-4751
BRANHAMS	Dwayne Weatherford	(843) 307-0070
CHARLESTON AFB/INTL	Elliott Summey	(843) 767-7000
CHARLESTON EXECUTIVE	Elliott Summey	(843) 767-7000
CHERAW MUNI/LYNCH BELLINGER FIELD	Robert Wolfe	(843) 537-8400
CHESTER CATAWBA RGNL	Keith Roach	(803) 385-6664
CLIO CROP CARE	Ken Hanke	(843) 586-9225
COLUMBIA METROPOLITAN	Greg Hornsby	(803) 822-5015
CONWAY-HORRY COUNTY	Judi Olmstead	(843) 448-1580
DARLINGTON COUNTY	Barry Kennett	(843) 393-9928
DILLON COUNTY	Tim Harper	(843) 774-1400
DONALDSON FIELD	Danny Moyd	(864) 277-3152
DRY SWAMP	Kurt Von Graff	(803) 534-3157
EDGEFIELD COUNTY	Tyler Flom	(218) 686-7746
FAIRFIELD COUNTY	Denise Bryan	(803) 635-1058
FAIRVIEW	Brian Beaudin	(864) 684-8610
FLORENCE RGNL	Brad Beadles	(843) 519-0550
FLYING W	Ronald Winburn	(843) 307-3503
GEORGETOWN COUNTY	Jim Taylor	(843) 545-3638
GRAND STRAND	Judi Olmstead	(843) 448-1580
GREENVILLE DOWNTOWN	James Stephens	(864) 242-4777
GREENVILLE SPARTANBURG INTL	David Edwards	(864) 848-6272
GREENWOOD COUNTY	Rett Templeton	(864) 942-8639
HAMPTON COUNTY	David Steinmeyer	(803) 942-3369
HARTSVILLE RGNL	Brandon Brown	(843) 383-1088
HILTON HEAD	Jon Rembold	(843) 441-5871
HOLLY HILL	Billy Chavis	(803) 496-3330
HUGGINS MEMORIAL	Bettie Huggins	(843) 346-3734
JIM HAMILTON - LB OWENS	Peter Cevallos	(803) 766-5617
KIRK AIR BASE	James Kirk	(803) 286-8800
LAKE CITY MUNI C.J. EVANS FIELD	Dusan Fridl	(843) 687-6490
LANCASTER COUNTY-MC WHIRTER FIELD	Paul Moses / Director	(803) 285-1513
LAURENS COUNTY	G. A. "Bud" Boyter	(864) 923-3507
LEE COUNTY-BUTTERS FIELD	George Roberts	(803) 229-2679
LEXINGTON COUNTY	Tim Shumpert	(803) 600-9313
LOWCOUNTRY RGNL	Bert Duffie	(843) 549-2549
MARION COUNTY	Charles Taylor	(843) 423-8265
MARLBORO COUNTY JETPORT - H E AVENT FIELD	Tony Clyburn	(843) 479-5600
MC CORMICK COUNTY	Mark Warner	(864) 602-9082
MT PLEASANT RGNL-FAISON FIELD	Elliott Summey	(843) 767-7000
MYRTLE BEACH INTL	Judi Olmstead	(843) 448-1580
NEWBERRY COUNTY	Josh Rowe	(803) 321-2180
OCONEE COUNTY RGNL	Jeff Garrison	(864) 882-2959
ORANGEBURG MUNI	Betty Baker	(803) 534-5545
PAGELAND	Shane Sligh	(843) 672-3068
PICKENS COUNTY	Carlos Salinas	(864) 843-5803
RIDGELAND-CLAUDE DEAN	Danny Lucas	(843) 929-4159
ROBERT F SWINNIE	Jim Taylor	(843) 545-3638
ROCK HILL/YORK CO/BRYANT FIELD	Steven Gould	(803) 329-5560
SALUDA COUNTY	Jill Warren	(864) 407-8018
SANTEE COOPER RGNL	Vickie Williams	(803) 433-4004
SPARTANBURG DOWNTOWN MEMORIAL/SIMPSON	Terry Connorton	(864) 580-5004
ST GEORGE	Don Hay	(843) 412-1999
SUMMERVILLE	Don Hay	(843) 412-1999
SUMTER	Jeff Knauer	(803) 469-4639
TWIN CITY	Judi Olmstead	(843) 448-1580
TWIN LAKES	TJ Nelson	(803) 640-7107
UNION COUNTY, TROY SHELTON FIELD	Ronnie Wade	(864) 429-1680
WILLIAMSBURG RGNL	John Hudson	(843) 372-2255
WOODWARD FIELD	Gerald Blanchard	(803) 729-0945

AIRPORT LOCATION IDENTIFIERS

ID	Airport Name	Associated City	Page No.
1DS	DRY SWAMP	ORANGEBURG	51
2Q0	FLYING W	HARTSVILLE	32
33A	FAIRVIEW	LANDRUM	40
35A	UNION COUNTY, TROY SHELTON FLD	UNION	65
3J0	HAMPTON COUNTY	HAMPTON	31
3J1	RIDGELAND-CLAUDE DEAN	RIDGELAND	56
51J	LAKE CITY MUNI CJ EVANS FIELD	LAKE CITY	37
52J	LEE COUNTY-BUTTERS FLD	BISHOPVILLE	9
58J	HUGGINS MEMORIAL	TIMMONSVILLE	63
5J5	HOLLY HILL	HOLLY HILL	35
5J9	TWIN CITY	LORIS	42
6J0	LEXINGTON COUNTY	PELION	54
6J2	ST GEORGE	ST GEORGE	60
6J4	SALUDA COUNTY	SALUDA	58
6J6	EDGEFIELD COUNTY	TRENTON	64
6J7	BRANHAMS	DARLINGTON	20
7S1	7 OAKS FLIGHT PARK	FAIRFAX	23
99N	BAMBERG COUNTY	BAMBERG	5
9W9	CLIO CROP CARE	CLIO	16
AIK	AIKEN RGNL	AIKEN	1
AND	ANDERSON RGNL	ANDERSON	3
AQX	ALLENDALE COUNTY	ALLENDALE	2
ARW	BEAUFORT EXECUTIVE	BEAUFORT	7
BBP	MARLBORO COUNTY JETPORT - H E AVENT FIELD	BENNETTSVILLE	8
BNL	BARNWELL RGNL	BARNWELL	6
CAE	COLUMBIA METROPOLITAN	COLUMBIA	17
CDN	WOODWARD FIELD	CAMDEN	10
CEU	OCONEE COUNTY RGNL	CLEMSON	15
CHS	CHARLESTON AFB/INTL	CHARLESTON	11
CKI	WILLIAMSBURG RGNL	KINGSTREE	36
CQW	CHERAW MUNI/LYNCH BELLINGER FIELD	CHERAW	13
CRE	GRAND STRAND	NORTH MYRTLE BEACH	50
CUB	JIM HAMILTON - L B OWENS	COLUMBIA	18
DCM	CHESTER CATAWBA RGNL	CHESTER	14
DLC	DILLON COUNTY	DILLON	22
DYB	SUMMERVILLE	SUMMERVILLE	61
EOE	NEWBERRY COUNTY	NEWBERRY	49
FDW	FAIRFIELD COUNTY	WINNSBORO	67
FLO	FLORENCE RGNL	FLORENCE	24
GGE	GEORGETOWN COUNTY	GEORGETOWN	25
GMU	GREENVILLE DOWNTOWN	GREENVILLE	27
GRD	GREENWOOD COUNTY	GREENWOOD	29
GSP	GREENVILLE SPARTANBURG INTL	GREER	30
GYH	DONALDSON FIELD	GREENVILLE	28
HVS	HARTSVILLE RGNL	HARTSVILLE	33
HXD	HILTON HEAD	HILTON HEAD ISLAND	34
HYW	CONWAY-HORRY COUNTY	CONWAY	19
JZI	CHARLESTON EXECUTIVE	CHARLESTON	12
LKR	LANCASTER COUNTY-MC WHIRTER FIELD	LANCASTER	38
LQK	PICKENS COUNTY	PICKENS	55
LRO	MT PLEASANT RGNL-FAISON FIELD	MOUNT PLEASANT	47
LUX	LAURENS COUNTY	LAURENS	41
MAO	MARION COUNTY	MARION	44
MKS	BERKELEY COUNTY	MONCKS CORNER	46
MNI	SANTEE COOPER RGNL	MANNING	43
MYR	MYRTLE BEACH INTL	MYRTLE BEACH	48
OGB	ORANGEBURG MUNI	ORANGEBURG	52
PHH	ROBERT F SWINNIE	ANDREWS	4
PYG	PAGELAND	PAGELAND	53
RBW	LOWCOUNTRY RGNL	WALTERBORO	66
S17	TWIN LAKES	GRANITEVILLE	26
S19	MC CORMICK COUNTY	MC CORMICK	45
SMS	SUMTER	SUMTER	62
SPA	SPARTANBURG DOWNTOWN MEMORIAL/SIMPSON	SPARTANBURG	59
T73	KIRK AIR BASE	LANCASTER	39
UDG	DARLINGTON COUNTY	DARLINGTON	21
UZA	ROCK HILL/YORK CO/BRYANT FIELD	ROCK HILL	57

AIRPORT CROSS REFERENCE INDEX

Airport Name	Associated City	Page No.
7 OAKS FLIGHT PARK	FAIRFAX	23
AIKEN RGNL	AIKEN	1
ALLENDALE COUNTY	ALLENDALE	2
ANDERSON RGNL	ANDERSON	3
BAMBERG COUNTY	BAMBERG	5
BARNWELL RGNL	BARNWELL	6
BEAUFORT EXECUTIVE	BEAUFORT	7
BERKELEY COUNTY	MONCK'S CORNER	46
BRANHAMS	DARLINGTON	20
CHARLESTON AFB/INTL	CHARLESTON	11
CHARLESTON EXECUTIVE	CHARLESTON	12
CHERAW MUNI/LYNCH BELLINGER FIELD	CHERAW	13
CHESTER CATAWBA RGNL	CHESTER	14
CLIO CROP CARE	CLIO	16
COLUMBIA METROPOLITAN	COLUMBIA	17
CONWAY-HORRY COUNTY	CONWAY	19
DARLINGTON COUNTY	DARLINGTON	21
DILLON COUNTY	DILLON	22
DONALDSON FIELD	GREENVILLE	28
DRY SWAMP	ORANGEBURG	51
EDGEFIELD COUNTY	TRENTON	64
FAIRFIELD COUNTY	WINNSBORO	67
FAIRVIEW	LANDRUM	40
FLORENCE RGNL	FLORENCE	24
FLYING W	HARTSVILLE	32
GEORGETOWN COUNTY	GEORGETOWN	25
GRAND STRAND	NORTH MYRTLE BEACH	50
GREENVILLE DOWNTOWN	GREENVILLE	27
GREENVILLE SPARTANBURG INTL	GREER	30
GREENWOOD COUNTY	GREENWOOD	29
HAMPTON COUNTY	HAMPTON	31
HARTSVILLE RGNL	HARTSVILLE	33
HILTON HEAD	HILTON HEAD ISLAND	34
HOLLY HILL	HOLLY HILL	35
HUGGINS MEMORIAL	TIMMONSVILLE	63
JIM HAMILTON - L B OWENS	COLUMBIA	18
KIRK AIR BASE	LANCASTER	39
LAKE CITY MUNI CJ EVANS FIELD	LAKE CITY	37
LANCASTER COUNTY-MC WHIRTER FIELD	LANCASTER	38
LAURENS COUNTY	LAURENS	41
LEE COUNTY-BUTTERS FLD	BISHOPVILLE	9
LEXINGTON COUNTY	PELION	54
LOWCOUNTRY RGNL	WALTERBORO	66
MARION COUNTY	MARION	44
MARLBORO COUNTY JETPORT - H E AVENT FIELD	BENNETTSVILLE	8
MC CORMICK COUNTY	MC CORMICK	45
MT PLEASANT RGNL-FAISON FIELD	MOUNT PLEASANT	47
MYRTLE BEACH INTL	MYRTLE BEACH	48
NEWBERRY COUNTY	NEWBERRY	49
OCONEE COUNTY RGNL	CLEMSON	15
ORANGEBURG MUNI	ORANGEBURG	52
PAGELAND	PAGELAND	53
PICKENS COUNTY	PICKENS	55
RIDGELAND-CLAUDE DEAN	RIDGELAND	56
ROBERT F SWINNIE	ANDREWS	4
ROCK HILL/YORK CO/BRYANT FIELD	ROCK HILL	57
SALUDA COUNTY	SALUDA	58
SANTEE COOPER RGNL	MANNING	43
SPARTANBURG DOWNTOWN MEMORIAL/SIMPSON	SPARTANBURG	59
ST GEORGE	ST GEORGE	60
SUMMERVILLE	SUMMERVILLE	61
SUMTER	SUMTER	62
TWIN CITY	LORIS	42
TWIN LAKES	GRANITEVILLE	26
UNION COUNTY, TROY SHELTON FLD	UNION	65
WILLIAMSBURG RGNL	KINGSTREE	36
WOODWARD FIELD	CAMDEN	10

AUTOMATED WEATHER OBSERVING SYSTEM (AWOS)

Associated City	Ident	Freq	Phone No
AIKEN	AIK	118.025	(803) 643-8664
ALLENDALE	AQX	118.950	(803) 584-3696
BARNWELL	BNL	119.775	(803) 259-4536
BEAUFORT	ARW	119.675	(843) 524-1000
BENNETTSTVILLE	BBP	123.825	(843) 479-5817
CAMDEN	CDN	119.975	(803) 424-1979
CHARLESTON	JZI	123.775	(843) 559-3123
CHERAW	CQW	124.825	(843) 537-3301
CHESTER	DCM	120.975	(803) 385-2011
CONWAY	HYW	119.525	(843) 397-8046
DARLINGTON	UDG	119.925	(843) 393-8220
GEORGETOWN	GGE	118.275	(843) 527-3851
GREENVILLE	GYH	127.325	(864) 277-5674
HARTSVILLE	HVS	118.225	(843) 339-9625
HILTON HEAD ISLAND	HXD	121.400	(843) 342-5072
KINGSTREE	CKI	124.775	(843) 382-3000
LANCASTER	LKR	120.825	(803) 286-6444
LAURENS	LUX	123.975	(864) 682-3639
MANNING	MNI	120.175	(803) 478-6060
MARION	MAO	119.875	(843) 423-4231
MONCKS CORNER	MKS	119.175	(843) 761-1486
MOUNT PLEASANT	LRO	118.625	(843) 849-0438
MYRTLE BEACH	MYR	123.925	(843) 238-0335
NEWBERRY	EOE	124.275	(803) 276-2419
PICKENS	LQK	120.000	(864) 843-5801
RIDGELAND	3J1	118.450	(843) 547-8419
SPARTANBURG	SPA	133.925	(864) 587-2529
SUMMERVILLE	DYB	119.575	(843) 821-8403
SUMTER	SMS	118.075	(803) 469-6750
UNION	35A	119.450	(864) 427-1514
WALTERBORO	RBW	118.725	(843) 538-3575
WINNSBORO	FDW	119.075	(803) 712-2577

AUTOMATED SURFACE OBSERVING SYSTEM (ASOS)

Associated City	Ident	Freq	Phone No
ANDERSON	AND	120.675	(864) 226-9522
CHARLESTON	CHS	N/A	(843) 554-9862
CLEMSON	CEU	119.275	(864) 653-8855
COLUMBIA	CUB	118.675	(803) 929-0665
COLUMBIA	CAE	N/A	(803) 822-4168
FLORENCE	FLO	123.625	(843) 665-1306
GREENVILLE	GMU	127.075	(864) 239-0014
GREENWOOD	GRD	121.125	(864) 388-9115
GREER	GSP	N/A	(864) 879-0614
NORTH MYRTLE BEACH	CRE	119.625	(843) 361-2802
ORANGEBURG	OGB	118.525	(803) 536-3901
ROCK HILL	UZA	120.775	(803) 981-9388

AUTOMATED WEATHER OBSERVATION SYSTEM

The Automated Weather Observation System (AWOS) enhances safety by providing critical airport weather information to pilots to be used for flight planning and in-flight decision making. The system provides real-time weather observations including wind, visibility, current weather, sky conditions, temperature, dew point, altimeter setting, and remarks, such as density altitude and local airport conditions.

South Carolina has an integrated system of 29 AWOS sites at airports in South Carolina that are maintained by the South Carolina Aeronautics Commissions (SCAC) office. An additional twelve weather observation sites maintained by the Federal Aviation Administration (FAA) are located at airports in South Carolina.

AWOS information can be accessed in a variety of ways, including radio frequency, telephone, and weather terminals at airports with AWOS. All AWOS information is disseminated nationwide through a system called NADIN, making it available to sources like Flight Service Stations, the National Weather Service, and Weather Channels.

What every pilot should know about AWOS

Wind

- Taken every second and a running two-minute average is updated every five seconds
- Wind speeds of less than three knots are reported as calm
- If the difference between the highest five second average and two minute average exceeds five knots, gusts are reported
- Wind direction is reported from the nearest ten degree magnetic heading

Visibility

- Readings are taken every fifteen seconds and are averaged over a ten minute period

Present weather

- A precipitation sensor samples every fifteen seconds
- Temperature and visibility measurements are used to determine precipitation type

Sky conditions (ceilings)

- Readings are taken every 30 seconds and averaged over a 30 minute period
- Ceiling measurements are rounded as follows:
 - o Nearest 100 feet up to 5,000 feet AGL
 - o Nearest 500 feet from 5,000 -10,000 feet AGL
 - o Nearest 1,000 feet above 10,000 feet

Temperature and dew point

- Four, one minute averages are used to determine the temperature

Altimeter (barometric pressure)

- Pressure sensors take readings every ten seconds and a one minute average is calculated

Remarks

- A calculated density altitude report is provided, if density altitude is greater than 1,000 feet above the airport's field elevation
- Occasionally, airport managers will provide recorded remarks regarding NOTAMs or local airport conditions

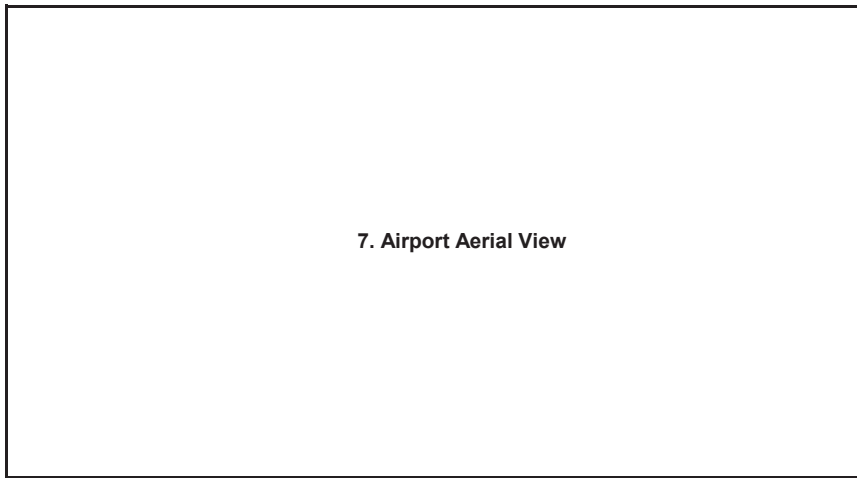
AWOS is maintained by the SCAC and is continuously monitored to ensure its operational status. Individual sites are also maintained and calibrated on a regular basis to ensure reliability and accuracy. As with an electronic device, care must be used when interpreting data. By knowing how AWOS data is collected, a pilot can better understand the information they are receiving.

KEY TO AIRPORT INFORMATION

1. Name	Airport FAA ID and Name
2. Chart	FAA Chart and Sectional
3. Information Date	Data Information Date
4. Associated City	Airport FAA ID and Name
5. Latitude	Airport Latitude
6. Longitude	Airport Longitude
7. Aerial View	Aerial View of the Airport Runways and Approaches
8. Elevation	Elevation of the Highest Point on Runway.
9. Magnetic Var	Magnetic Variants in Degrees and Direction
10. ID	Runway ID
11. Length	Length of Pavement/Turf End-to-End
12. Width	Width of Pavement or Turf
13. Surface	Runway Surface (asph, turf etc) Type
14. VGI	Visual Glide Slope Indicators (noted for each end)
15. REILS	Runway End Identifier Lights Sys (noted for each end)
16-17. Lights	Lights to Aid Landing Craft
18. Pattern	15-RH Indicates 15 Has Right Hand Traffic Pattern
19. Runway	Runway ID
20. SW	Gross Weight for Single Wheel Aircraft
21. DW	Gross Weight for Dual Wheel Aircraft
22. DTW	Gross Weight for Dual Tandem Wheel Aircraft
23. DDTW	Gross Weight for Double Dual Tandem Wheel Aircraft
24. Ident	Navigation Aid Identification
25. Type	Type of NAVAID (NBD VOR etc)
26. FREQ	NAVAID Frequency
27. DIRECT/DIST	Direction and Distant to Airport
28. Communications (Towered Facility)	
Tower	Tower's Frequency
GRND	Ground Control Frequency
CL DEL	Clearance and Delivery Frequency
ATIS	Automatic Terminal Information System Frequency
ATC FREQ	Air Traffic Control Service Frequency
ATC FAAID	Air Traffic Control Service FAA Identification
RCO	Remote Control Outlet Frequency
BRNG/FREQ	Approach/Departure Bearings and Frequencies
28. Communications (Non-Towered Facility)	
Unicom	UniCom Frequency
CTAF	Common Traffic Advisory Frequency
GCO	Ground Control Outlet Frequency
RCO	Remote Control Outlet Frequency
ATC FREQ	Air Traffic Control Service Frequency
ATC FAAID	Air Traffic Control Service FAA Identification
29. AWOS Freq	Automated Weather/Surface Observation System Frequency
30. AWOS Phone	Automated Weather/Surface Observation System Phone
31. Manager	Manager Name

- 1. Name
- 2. Chart and Sectional
- 3. Information Date

- 4. Associated City
- 5. Latitude
- 6. Longitude



8. Elevation

9. Magnetic Variants

Runway					Edge	Approach	Traffic	
ID	Length	Width	Surface	VGSI	REILS	Lights	Lights	Pattern
10.	11.	12.	13.	14.	15.	16.	17.	18.

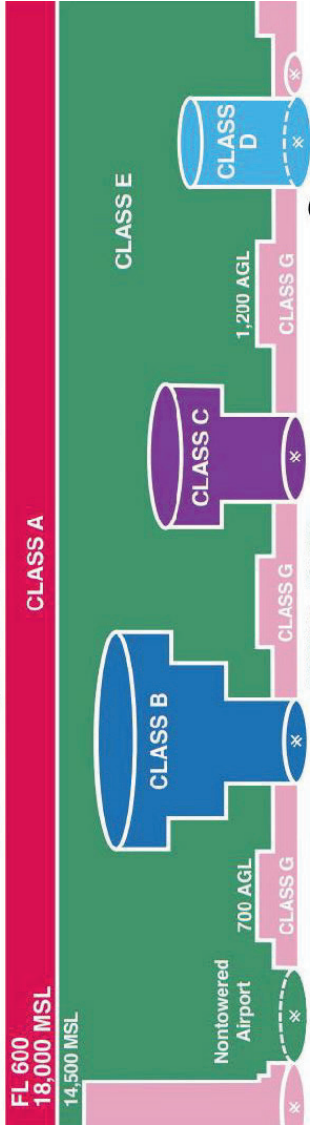
Runway Pavement Strength					Navigation			
Runway	SW	DW	DTW	DDTW	IDENT	Type	FREQ	Direct/Dist
19.	20.	21.	22.	23.	24.	25.	26.	27.

Communications						AWOS/ASOS	
						FREQ	Phone
28.						29.	30.

31. Manager	37. Storage	43. Repairs
32. Address	38. Landing Fee	44. Oxygen
33. Phone	39. Lighting Sch	45. Fuel Type
34. Fax	40. PCL Remark	
35. E-mail	41. Att Schedule	
36. FBO	42. Remarks	

- 32. Address Manager Address
- 33. Phone Manager Phone
- 34. Fax Manager Fax No
- 35. E-Mail E-mail Address
- 36. FBO Fixed Base Operator
- 37. Storage Storage Facilities
- 38. Fees Landing Fees
- 39. Lighting Sch Lighting Schedule
- 40. PCL Remark Pilot Control Lighting Instructions
- 41. Att Schedule Attended Schedule
- 42. Remarks Airport Remarks
- 43. Repairs Indicates Repair Facilities Available
- 44. Oxygen Indicates Oxygen Available
- 45. Fuel Type Fuel Type(s) Available

U.S. Airspace Classes at a Glance



14 CFR Part 91.155
 www.FAASafety.gov
 Your Aviation Safety Web Site

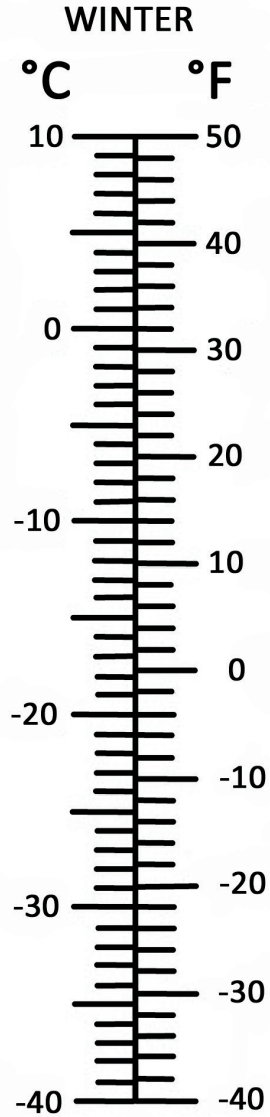
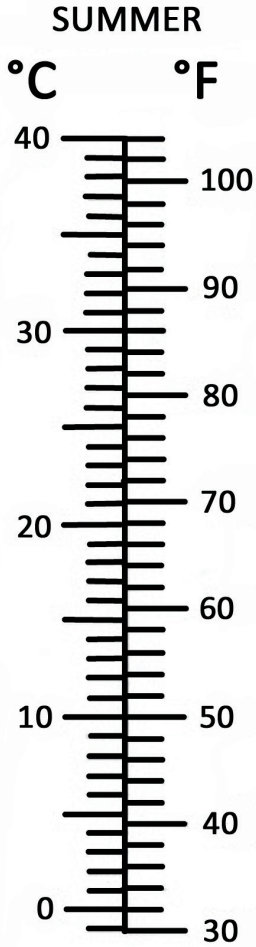
AGL - above ground level
 FL - flight level
 MSL - mean sea level

Airspace Class	Entry Requirement	Pilot Certificate or Rating	Two-Way Communication	Altitude Decoding Transponder	VFR Min. Visibility Below 10,000 MSL	VFR Min. Visibility 10,000 MSL and Above	VFR Cloud Clearance Below 10,000 MSL	VFR Cloud Clearance 10,000 MSL and Above
A	ATC Clearance	Instrument	Yes	Yes	N/A	N/A	N/A	N/A
B	ATC Clearance	Private Certificate or student with endorsement	Yes	Yes within 30 nm of the class B primary airport ¹	3 miles	3 miles	Clear of Clouds	Clear of Clouds
C	VFR: Radio Contact IFR: Clearance	Student Certificate	Yes	Yes within C space and above lateral limits of C space ¹	3 miles	3 miles	500 below 1,000 above 2,000 horizontal	500 below 1,000 above 2,000 horizontal
D	VFR: Radio Contact IFR: Clearance	Student Certificate	Yes	No unless required by other airspace	3 miles	3 miles	500 below 1,000 above 2,000 horizontal	500 below 1,000 above 2,000 horizontal
E	VFR: None IFR: Clearance	Student Certificate	IFR only	No unless required by other airspace	3 miles	5 miles	500 below 1,000 above 2,000 horizontal	1,000 below 1,000 above 1 mile horizontal
G	None	Student Certificate	No	No unless required by other airspace	Day: 1 mile Night: 3 miles	5 miles ²	500 below 1,000 above 2,000 horizontal	1,000 below 1,000 above 1 mile horizontal

¹ An altitude decoding transponder is required above 10,000 MSL.

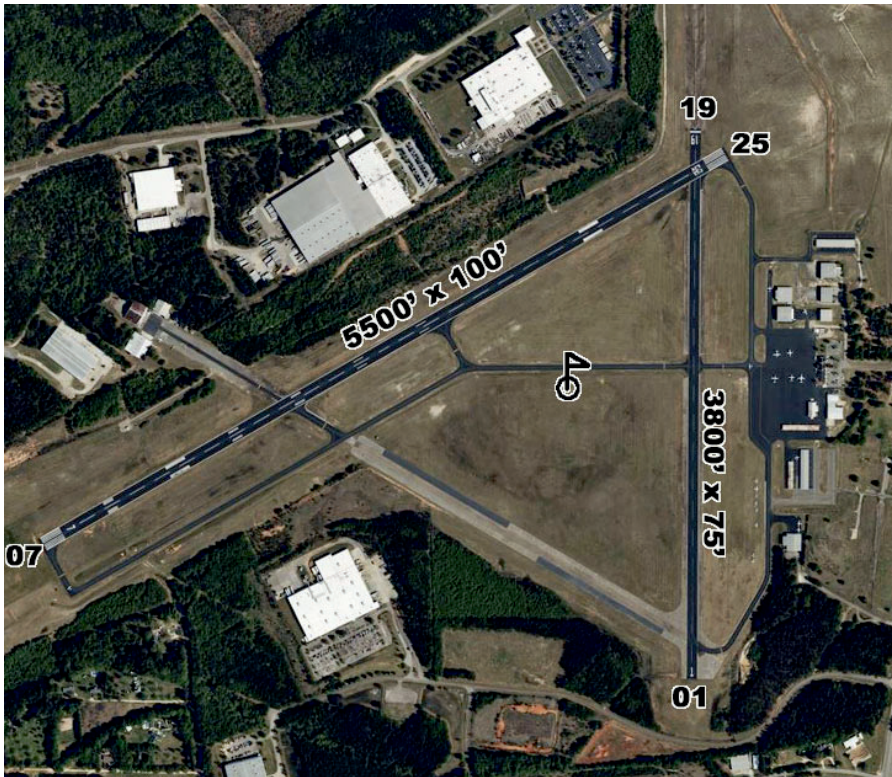
² When flying 1,200 AGL or below: DAY: 1 mile visibility clear of clouds; NIGHT: 3 miles visibility, 500 below, 1,000 above, 2,000 horizontal.

TEMPERATURE CONVERSIONS



AIK - AIKEN RGNL
 CHARLOTTE SECTIONAL
 12/26/2024

AIKEN - 1
 Latitude: 33° 38' 57.8000" N
 Longitude: 81° 41' 06.1000" W



Elevation - 529' MSL

Mag Var - 07° W

Runway					Edge	Approach	Traffic	
ID	Length	Width	Surface	VGSI	REILS	Lights	Lights	Pattern
01/19	3800'	75'	ASPH					Standard
07/25	5500'	100'	ASPH	07/25	25	MED	25	Standard

Runway Pavement Strength					Navigation			
Runway	SW	DW	DTW	DDTW	IDENT	Type	FREQ	Direct/Dist
01/19	54.0	75.0	139.0		AIK	NDB	347	at fld
07/25	55.0	75.0	140.0		IRQ	VORTAC	113.90	r102° 14.6 NM to fld

Communications				ATC		AWOS/ASOS	
Unicom	CTAF	GCO	RCO	FREQ	FAA ID	FREQ	Phone
122.800	122.800			119.15	AGS	118.025	(803) 643-8664

Manager Chris McCauley	Storage HGR, TIE	Repairs Y
GPS 129 Aviation Blvd	Landing Fee N	Oxygen N
Address Aiken, SC 29805	Lighting Sched SEE RMK	Fuel Type 100LL, JET A
Phone (803) 502-4860	Att Schedule Daily 0700-1900	
Fax	Remarks No RAMP FEE piston AC or fuel purchase 7/25 RWY LGTS & ODALS use CTAF After hours access & fuel call (803) 640-6891 CLNC DEL 126.075	
E-mail cmccauley@CityofAikenSC.gov		
FBO Phone/Fax		
Aiken Aviation Enterprises, Inc		
(803) 648-7803 (803) 648-7804		

AQX - ALLENDALE COUNTY
 CHARLOTTE SECTIONAL
 12/26/2024

ALLENDALE - 2
 Latitude: 32° 59' 42.4020" N
 Longitude: 81° 16' 12.8520" W



Elevation - 162' MSL

Mag Var - 06° W

Runway					Edge	Approach	Traffic	
ID	Length	Width	Surface	VGSI	REILS	Lights	Lights	Pattern
17/35	4990'	75'	ASPH	17/35		MED		Standard

Runway Pavement Strength					Navigation			
Runway	SW	DW	DTW	DDTW	IDENT	Type	FREQ	Direct/Dist
17/35	26.0	34.0			ALD	VOR	116.70	r134° 1.5 NM to fld

Communications			ATC		AWOS/ASOS		
Unicom	CTAF	GCO	RCO	FREQ	FAA ID	FREQ	Phone
122.800	122.800		116.7T 122.1R	132.925	JAX	118.950	(803) 584-3696

Manager Lonnie Browning	Storage TIE	Repairs N
GPS 467 Airport Loop	Landing Fee N	Oxygen N
Address Fairfax, SC 29827	Lighting Sched SEE RMK	Fuel Type 100LL, JET A
Phone (803) 584-3801	Att Schedule Daily 0900-1700	
Fax (803) 584-4447	Remarks ACTVT MIRL - CTAF.	
E-mail lbrowning@allendalecounty.gov		SELF SERVE 100LL and JET A
FBO Phone/Fax		24/7 TERMINAL ACCESS KEYPAD/CTAF

AND - ANDERSON RGNL

ATLANTA SECTIONAL
12/26/2024

ANDERSON - 3

Latitude: 34° 29' 40.5120" N
Longitude: 82° 42' 33.7730" W



Elevation - 782' MSL

Mag Var - 05° W

Runway					Edge	Approach	Traffic
ID	Length	Width	Surface	VGSI	REILS	Lights	Pattern
05/23	6002'	149'	ASPH	05/23		HIGH	05
17/35	4996'	149'	ASPH				Standard
H1	50'	50'	CONC			PERI	
H2	50'	50'	CONC			PERI	

Runway Pavement Strength					Navigation			
Runway	SW	DW	DTW	DDTW	IDENT	Type	FREQ	Direct/Dist
05/23	40.0	58.0	109.0		ELW	VORTAC	108.60	r039° 5.9 NM to fld
17/35	17.5	28.0						

Communications				ATC		AWOS/ASOS	
Unicom	CTAF	GCO	RCO	FREQ	FAA ID	FREQ	Phone
	123.600		122.2	118.8	GSP	120.675	(864) 226-9522

Manager Brett Garrison	Storage HGR,TIE	Repairs Y
GPS 5805 Airport Rd	Landing Fee Y	Oxygen Y
Address Anderson, SC 29626	Lighting Sched SEE RMK	Fuel Type 100LL, JET A
Phone (864) 260-4163		

Fax **Att Schedule** M-F 0700-1900 / S-S 0800-1800

E-mail tbgarrison@andersoncountysc.org **Remarks** ACTVT HIRL RWY 05/23, MALSR RWY 05 AND PERIMETER LGTS HELIPADS H1 & H2 - CTAF. RAMP FEES. After hours access use CTAF numbers for gate code. Parachute activity. SELF SERVICE 100LL. NO RAMP FEE FOR PISTON SINGLES.

FBO Phone/Fax
Anderson County Aviation
(864) 964-5656 (864) 231-2297

PHH - ROBERT F SWINNIE
 CHARLOTTE SECTIONAL
 12/26/2024

ANDREWS - 4

Latitude: 33° 27' 06.1190" N
 Longitude: 79° 31' 34.2360" W



Elevation - 26' MSL

Mag Var - 08° W

Runway					Edge	Approach	Traffic
ID	Length	Width	Surface	VGSI	REILS	Lights	Pattern
18/36	3001'	60'	ASPH	18/36		MED	Standard

Runway Pavement Strength					Navigation			
Runway	SW	DW	DTW	DDTW	IDENT	Type	FREQ	Direct/Dist
18/36	11.0	22.0			CHS	VORTAC	113.50	r043° 42.2 NM to fld

Communications				ATC		AWOS/ASOS	
Unicom	CTAF	GCO	RCO	FREQ	FAA ID	FREQ	Phone
	122.900			127.4	MYR		

Manager Jim Taylor

GPS 11905 Gapway Rd

Address Andrews, SC 29510

Phone (843) 545-3638

Fax

E-mail jtaylor@gtcounty.org

FBO Phone/Fax

Storage TIE

Landing Fee N

Lighting Sched SS-SR

Att Schedule UNATTENDED

Remarks Activate MIRL & PAPI RWY 18/36 - CTAF.

Repairs N

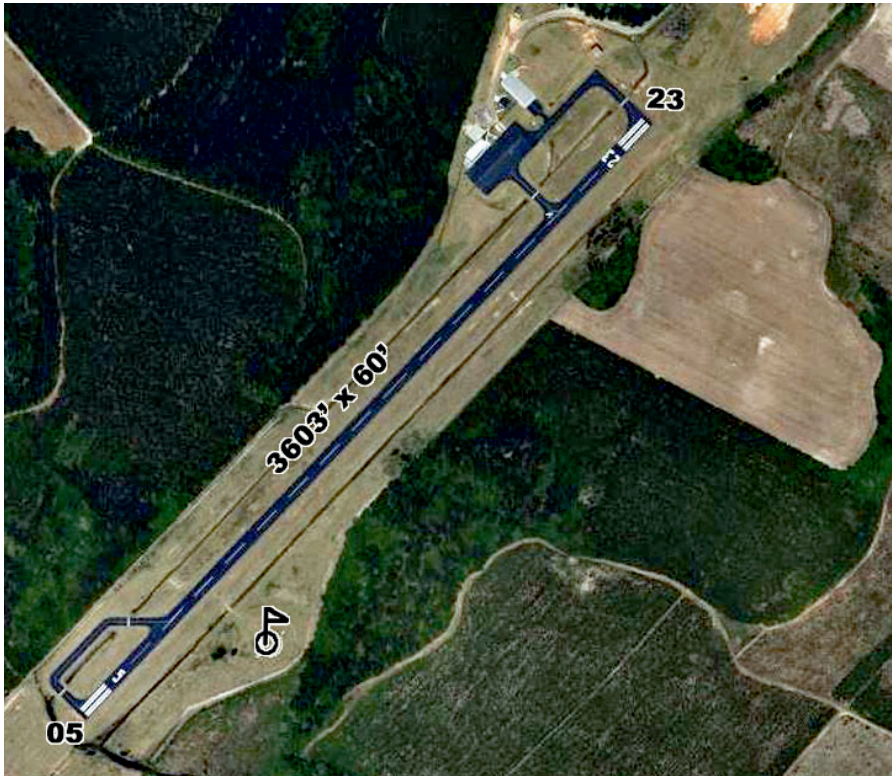
Oxygen N

Fuel Type N

99N - BAMBERG COUNTY
 CHARLOTTE SECTIONAL
 12/26/2024

BAMBERG - 5

Latitude: 33° 18' 16.3000" N
 Longitude: 81° 06' 30.3000" W



Elevation - 231' MSL

Mag Var - 07° W

Runway					Edge	Approach	Traffic
ID	Length	Width	Surface	VGSI	REILS	Lights	Pattern
05/23	3603'	60'	ASPH	05/23		MED	Standard

Runway Pavement Strength					Navigation			
Runway	SW	DW	DTW	DDTW	IDENT	Type	FREQ	Direct/Dist
05/23	30.0	60.0			CAE	VORTAC	114.70	r187° 33.2 NM to fld

Communications				ATC		AWOS/ASOS	
Unicom	CTAF	GCO	RCO	FREQ	FAA ID	FREQ	Phone
122.800	122.800						

Manager Joey Preston
GPS 3865 Underpass Rd
Address Bamberg, SC 29003
Phone (803) 245-5191
Fax (803) 245-3027
E-mail joeypreston@gmail.com
FBO Phone/Fax

Storage TIE
Landing Fee N
Lighting Sched SEE RMK
Repairs N
Oxygen N
Fuel Type 100LL

Att Schedule UNATTENDED
Remarks AFTER 2200, ACTVT MIRL AND PAPI RWY
 05/23 - CTAF.
 Ramp Access use CTAF numbers
 Self Serve 100LL

BNL - BARNWELL RGNL
 CHARLOTTE SECTIONAL
 12/26/2024

BARNWELL - 6

Latitude: 33° 15' 27.6039" N
Longitude: 81° 23' 17.5882" W



Elevation - 246' MSL

Mag Var - 07° W

Runway					Edge		Approach	Traffic
ID	Length	Width	Surface	VGSI	REILS	Lights	Lights	Pattern
17/35	5119'	100'	ASPH	17/35	17	MED	17	17 - RH

Runway Pavement Strength					Navigation			
Runway	SW	DW	DTW	DDTW	IDENT	Type	FREQ	Direct/Dist
17/35	69.0	99.0			CAE	VORTAC	114.70	r207° 39.6 NM tofld

Communications				ATC		AWOS/ASOS	
Unicom	CTAF	GCO	RCO	FREQ	FAA ID	FREQ	Phone
122.800	122.800	121.725		132.925	JAX	119.775	(803) 259-4536

Manager Brandon Chavis
GPS 155 Airport Rd
Address Barnwell, SC 29812
Phone (803) 259-1090
Fax (803) 259-4596
E-mail barnwellairport@barnwellsc.com

Storage HGR,TIE
Repairs N
Landing Fee N
Oxygen N
Lighting Sched SEE RMK
Fuel Type 100LL, JET A, MOGAS

FBO Phone/Fax
 Barnwell Regional Airport
 (803) 259-1090

Att Schedule Daily 0900-1700
Remarks RWY 5/23 in POOR condition
 MIRL Rwy. 17-35 dusk - 2200, after 2200-CTAF, ODALS RWY. 17 -CTAF.
 After-hrs access bldg via keypad (instructions on keypad).
 Ramp access via unlocked pedestrian gate.
 SELF SERVICE MOGAS, 100LL and JET A

ARW - BEAUFORT EXECUTIVE
 CHARLOTTE SECTIONAL
 12/26/2024

BEAUFORT - 7

Latitude: 32° 24' 43.8000" N
Longitude: 80° 38' 03.6750" W



Elevation - 9' MSL

Mag Var - 07° W

Runway					Edge	Approach	Traffic
ID	Length	Width	Surface	VGSI	REILS	Lights	Pattern
07/25	3434'	75'	ASPH	07/25	25	MED	07 - RH

Runway Pavement Strength					Navigation			
Runway	SW	DW	DTW	DDTW	IDENT	Type	FREQ	Direct/Dist
07/25	35.0	52.0			SAV	VORTAC	115.95	r067° 32.8 NM to fld

Communications				ATC		AWOS/ASOS	
Unicom	CTAF	GCO	RCO	FREQ	FAA ID	FREQ	Phone
122.700	122.700	121.725		125.125	NBC	119.675	(843) 524-1000

Manager Eric Townsend	Storage TIE	Repairs N
GPS 39 Airport Circle	Landing Fee N	Oxygen N
Address Beaufort, SC 29907	Lighting Sched SEE RMK	Fuel Type 100LL, JET A
Phone (843) 592-1378		
Fax	Att Schedule Daily 0800-1800	
E-mail eric.townsend@bcgov.net	Remarks MIRL PRESET LOW INTST; INCR INTST - CTAF.	
FBO Phone/Fax	AFTR-HRS RAMP ACCESS PED GATE.	
	24/7 TERMINAL ACCESS	
	AFTR-HRS FEE CALLOUT W/48HR NOTICE.	
	SELF SERVE 100LL	

BBP - MARLBORO COUNTY JETPORT - H E AVENT FIELD

BENNETTSVILLE - 8

CHARLOTTE SECTIONAL
12/26/2024

Latitude: 34° 37' 18.1510" N
Longitude: 79° 44' 03.6940" W



Elevation - 147' MSL

Mag Var - 08° W

Runway					Edge		Approach	Traffic
ID	Length	Width	Surface	VGSI	REILS	Lights	Lights	Pattern
07/25	5003'	74'	ASPH	07/25	07/25	MED		Standard

Runway Pavement Strength					Navigation			
Runway	SW	DW	DTW	DDTW	IDENT	Type	FREQ	Direct/Dist
07/25	28.0	43.0	70.0		BES	NDB	230	at fld
					FLO	VORTAC	115.20	r354° 23.6 NM to fld

Communications				ATC		AWOS/ASOS	
Unicom	CTAF	GCO	RCO	FREQ	FAA ID	FREQ	Phone
122.800	122.800			118.6	FLO	123.825 (843)	479-5817

Manager Tony Clyburn
GPS 1231 State Road S-35-330
Address Bennettsville, SC 29512 (843)
Phone 479-5600
Fax
E-mail tclyburn@marlborocounty.sc.gov
FBO Phone/Fax
 Rare Air Inc.
 (843) 479-4797

Storage HGR,TIE
Landing Fee N
Lighting Sched SS-SR
Att Schedule MON-SAT 0800-1700 / SUN 1300-1700
Remarks \$75 fee for fuel after hrs. (843) 439-1269

Repairs N
Oxygen N
Fuel Type 100LL, JET A

52J - LEE COUNTY-BUTTERS FLD

CHARLOTTE SECTIONAL
12/26/2024

BISHOPVILLE - 9

Latitude: 34° 14' 40.1460" N
Longitude: 80° 14' 09.7210" W



Elevation - 211' MSL

Mag Var - 08° W

Runway					Edge	Approach	Traffic
ID	Length	Width	Surface	VGSI	REILS	Lights	Pattern
06/24	3200'	60'	ASPH	06/24		MED	Standard

Runway Pavement Strength					Navigation			
Runway	SW	DW	DTW	DDTW	IDENT	Type	FREQ	Direct/Dist
06/24	12.5	25.0			CTF	VOR/DME	114.55	r178° 24.4 NM to fld

Communications				ATC		AWOS/ASOS	
Unicom	CTAF	GCO	RCO	FREQ	FAA ID	FREQ	Phone
							122.900

Manager George Roberts
GPS 145 Airport Rd
Address Bishopville, SC 29010
Phone (803) 229-2679
Fax
E-mail mwatkins1@sc.rr.com
FBO Phone/Fax

Storage TIE
Repairs N
Landing Fee N
Oxygen N
Lighting Sched SEE RMK
Fuel Type 100LL
Att Schedule UNATTENDED
Remarks BCN - SS to SR, PAPI - SR to SS
NIGHT ACTVT PAPI/MIRL W CTAF PCL
SELF SERVICE 100LL

CDN - WOODWARD FIELD
 CHARLOTTE SECTIONAL
 12/26/2024

CAMDEN - 10

Latitude: 34° 17' 00.9340" N
 Longitude: 80° 33' 53.4790" W



Elevation - 302' MSL

Mag Var - 08° W

Runway					Edge	Approach	Traffic
ID	Length	Width	Surface	VGSI	REILS	Lights	Pattern
06/24	5000'	100'	ASPH	06/24	06/24	MED	Standard
14/32	2998'	100'	ASPH				Standard

Runway Pavement Strength					Navigation				
Runway	SW	DW	DTW	DDTW	IDENT	Type	FREQ	Direct/Dist	
06/24	51.0	70.0	131.0		CTF	VOR/DME	114.55	r216° 26.3 NM to fld	
14/32	30.0	55.0	90.0						

Communications				ATC		AWOS/ASOS	
Unicom	CTAF	GCO	RCO	FREQ	FAA ID	FREQ	Phone
123.000	123.000			125.4	SSC	119.975	(803) 424-1979

Manager Gerald Blanchard	Storage HGR,TIE	Repairs Y
GPS 2203 Airline Dr	Landing Fee N	Oxygen Y
Address Camden, SC 29020	Lighting Sched SEE RMK	Fuel Type 100LL, JET A
Phone (803) 729-0945	Att Schedule M-F 0800-1800 / S-S 0800-1700	
Fax	Remarks MIRL RWY 06/24 PRESET LOW INTST INCR MIRL INTST AND ACTVT REIL RWYS 06 & 24 - CTAF. AFTR HRS RAMP ACCESS PED GATE USE VFR SQUAWK CODE. AFTR HRS (803) 713-4655. SELF SERVICE 100LL FULL AND SELF SERVICE JET A	
E-mail gerald.blanchard@kershaw.sc.gov		
FBO Phone/Fax		

CHS - CHARLESTON AFB/INTL
 CHARLOTTE SECTIONAL
 12/26/2024

CHARLESTON - 11

Latitude: 32° 53' 55.1000" N
Longitude: 80° 02' 25.9000" W



Elevation - 46' MSL

Mag Var - 07° W

Runway					Edge	Approach	Traffic
ID	Length	Width	Surface	VGSI	REILS	Lights	Pattern
03/21	7000'	150'	CONC	03/21	03/21	HIGH	Standard
15/33	9001'	150'	CONC	15/33		HIGH	Standard

Runway Pavement Strength					Navigation			
Runway	SW	DW	DTW	DDTW	IDENT	Type	FREQ	Direct/Dist
03/21					CH	NDB	329	r153° 5.5 NM to fld
15/33					CHS	VORTAC	113.50	at fld

Communications			ATIS	ATC		RCO	APP/DEP	AWOS/ASOS	
Tower	GRND	CL DEL	FREQ	FREQ	FAA ID	FREQ	BRNG/FREQ	FREQ	Phone
126.0	121.9	127.325	124.75	120.7	CHS	122.1R		N/A	(843) 554-9862
						113.5T			

Manager Elliott Summey
GPS 5500 International Blvd
Address Charleston, SC 29418
Phone (843) 767-7000
Fax
E-mail esummey@iflychs.com

FBO Phone/Fax
 Atlantic Aviation Services
 (843) 746-7600 (843) 746-7642
 Signature Flight Support
 (843) 414-9200

Storage HGR,TIE
Landing Fee N
Lighting Sched
Repairs Y
Oxygen Y
Fuel Type 100LL, JET A

Att Schedule 24/7

Remarks
 24 HR Tower - Class C Airspace
 No student touch & go's allowed
 Intensive military operations
 ARINC 129.375 (Atlantic Aviation)
 131.625 (Signature)
 Noise Abatement Procedures
 Ramp Fee; Unicom 122.95

JZI - CHARLESTON EXECUTIVE
 CHARLOTTE SECTIONAL
 12/26/2024

CHARLESTON - 12

Latitude: 32° 42' 03.7000" N
Longitude: 80° 00' 11.7000" W



Elevation - 19' MSL

Mag Var - 08° W

Runway				Edge	Approach	Traffic
ID	Length	Width	Surface	VGSI	REILS	Pattern
04/22	4313'	150'	CONC			Standard
09/27	5350'	100'	CONC	09/27	09/27	Standard

Runway Pavement Strength				Navigation				
Runway	SW	DW	DTW	DDTW	IDENT	Type	FREQ	Direct/Dist
04/22	45.0	56.0			CHS	VORTAC	113.50	r176° 11.7 NM to fld
09/27	60.0	100.0						

Communications			ATC		AWOS/ASOS	
Unicom	CTAF	GCO	FREQ	FAA ID	FREQ	Phone
122.800	122.800		119.85	120.7	CHS	123.775 (843) 559-3123

Manager Elliott Summey
GPS 2742 Fort Trenholm Rd
Address Charleston, SC 29455
Phone (843) 767-7000
Fax
E-mail esummey@iflychs.com

Storage HGR,TIE
Repairs Y
Landing Fee N
Oxygen N
Lighting Sched SEE RMK
Fuel Type 100LL, JET A

FBO Phone/Fax
 Atlantic Aviation
 (843) 559-2401

Att Schedule Daily 0600-2200
Remarks ACTVT MIRL RWY 04/22 & HIRL RWY
 09/27 - CTAF. RAMP FEE
 After Hours access (843) 746-7600
 CLNC DEL 119.85

CQW - CHERAW MUNI/LYNCH BELLINGER FIELD

CHERAW - 13

CHARLOTTE SECTIONAL
12/26/2024

Latitude: 34° 42' 46.3000" N
Longitude: 79° 57' 25.2000" W



Elevation - 239' MSL

Mag Var - 08° W

Runway					Edge	Approach	Traffic
ID	Length	Width	Surface	VGSI	REILS	Lights	Pattern
08/26	5000'	75'	ASPH		08/26	MED	Standard

Runway Pavement Strength					Navigation			
Runway	SW	DW	DTW	DDTW	IDENT	Type	FREQ	Direct/Dist
08/26	30.0	48.0			CTF	VOR/DME	114.55	r080° 16.1 NM to fld

Communications				ATC		AWOS/ASOS	
Unicom	CTAF	GCO	RCO	FREQ	FAA ID	FREQ	Phone
122.800	122.800			118.6	FLO	124.825	(843) 537-3301

Manager Robert Wolfe
GPS 197 Janice Circle
Address Cheraw, SC 29520
Phone (843) 537-8400
Fax
E-mail rwolfe@cheraw.com

Storage TIE
Repairs Y
Landing Fee N
Oxygen N
Lighting Sched SEE RMK
Fuel Type 100LL, JET A

FBO Phone/Fax
Hall Aviation
(843) 537-6423

Att Schedule M-F0800-1700 SAT0800-1300 SUN1330-1700
Remarks ACTVT MIRL - CTAF.
REIL out of service indefinitely
For fuel after hours (fee) - (843) 537-9436 OR
(843) 622-5547

DCM - CHESTER CATAWBA RGNL
 CHARLOTTE SECTIONAL
 12/26/2024

CHESTER - 14

Latitude: 34° 47' 21.6000" N
 Longitude: 81° 11' 44.8000" W



Elevation - 657' MSL

Mag Var - 07° W

Runway				Edge	Approach	Traffic
ID	Length	Width	Surface	VGSI	REILS	Lights
05/23	4998'	100'	ASPH			
17/35	5000'	100'	ASPH	17/35		MED

Runway Pavement Strength				Navigation				
Runway	SW	DW	DTW	DDTW	IDENT	Type	FREQ	Direct/Dist
05/23	4.0	12.0			DCM	NDB	220	at fld
17/35	30.0	44.0			CLT	VORTAC	115.00	r212° 26.9 NM to fld

Communications				ATC		AWOS/ASOS	
Unicom	CTAF	GCO	RCO	FREQ	FAA ID	FREQ	Phone
122.700	122.700			120.05	CLT	120.975	(803) 385-2011

Manager Keith Roach
GPS 1854A Piper Dr
Address Chester, SC 29706
Phone (803) 385-6664
Fax
E-mail chesterairport@gmail.com
FBO Phone/Fax

Storage HGR,TIE
Repairs N
Landing Fee N
Oxygen N
Lighting Sched SEE RMK
Fuel Type 100LL, JET A

Att Schedule M-F 0900-1700 S-S 0900-1800
Remarks REQUEST NO MID-FIELD FLY-OVER DUE TO PARACHUTE ACTIVITY
 SKYDIVE CAROLINA (803) 581-5867
 ACTVT MIRL RWY 17/35 AND PAPI RWYS 17 & 35 - CTAF.
 RAMP ACCESS USE AWOS FREQ.
 FULL & SELF SERVICE 100LL & JET A

CEU - OCONEE COUNTY RGNL

ATLANTA SECTIONAL
12/26/2024

CLEMSON - 15

Latitude: 34° 40' 20.0000" N
Longitude: 82° 53' 09.2000" W



Elevation - 890' MSL

Mag Var - 06° W

Runway					Edge		Approach	Traffic
ID	Length	Width	Surface	VGSI	REILS	Lights	Lights	Pattern
07/25	5000'	100'	ASPH	07/25	07/25	MED		07 - RH

Runway Pavement Strength					Navigation			
Runway	SW	DW	DTW	DDTW	IDENT	Type	FREQ	Direct/Dist
07/25	28.5	44.0			ODF	VORTAC	113.40	r94° 20.4 NM to fld

Communications				ATC		AWOS/ASOS	
Unicom	CTAF	GCO	RCO	FREQ	FAA ID	FREQ	Phone
122.700	122.700			118.8	GSP	119.275	(864) 653-8855

Manager Jeff Garrison	Storage HGR,TIE	Repairs Y
GPS 365 Airport Rd	Landing Fee N	Oxygen N
Address Seneca, SC 29678	Lighting Sched SEE RMK	Fuel Type 100LL, JET A
Phone (864) 882-2959	Att Schedule MON-SAT 0800-1800/SUN 0900-1700	
Fax	Remarks ACFT MAY BE OPERATING W-NW FROM A PRIVATE AIRPORT. ACTVT MIRL RWY 07/25 - CTAF. KEYPAD ACCESS AFTER HRS. CALL (864) 882-2959 NDB OUT OF SERVICE. SELF SERVICE 100LL	
E-mail jgarrison@oconeesc.com		
FBO Phone/Fax Oconee County Aviation (864) 882-2959		

9W9 - CLIO CROP CARE
 CHARLOTTE SECTIONAL
 12/26/2024

CLIO - 16

Latitude: 34° 33' 41.1000" N
 Longitude: 79° 32' 17.1000" W



Elevation - 192' MSL

Mag Var - 08° W

Runway					Edge	Approach	Traffic
ID	Length	Width	Surface	VGSI	REILS	Lights	Pattern
05/23	2598'	125'	TURF				Standard

Runway Pavement Strength					Navigation			
Runway	SW	DW	DTW	DDTW	IDENT	Type	FREQ	Direct/Dist
05/23					FLO	VORTAC	115.20	r020° 20.6 NM to fld

Communications				ATC		AWOS/ASOS	
Unicom	CTAF	GCO	RCO	FREQ	FAA ID	FREQ	Phone
							122.900

Manager Ken Hanke
GPS 2750 Highway 9 East
Address Clio, SC 29525
Phone (843) 586-9225
Fax
E-mail agpilot@copper.net
FBO Phone/Fax

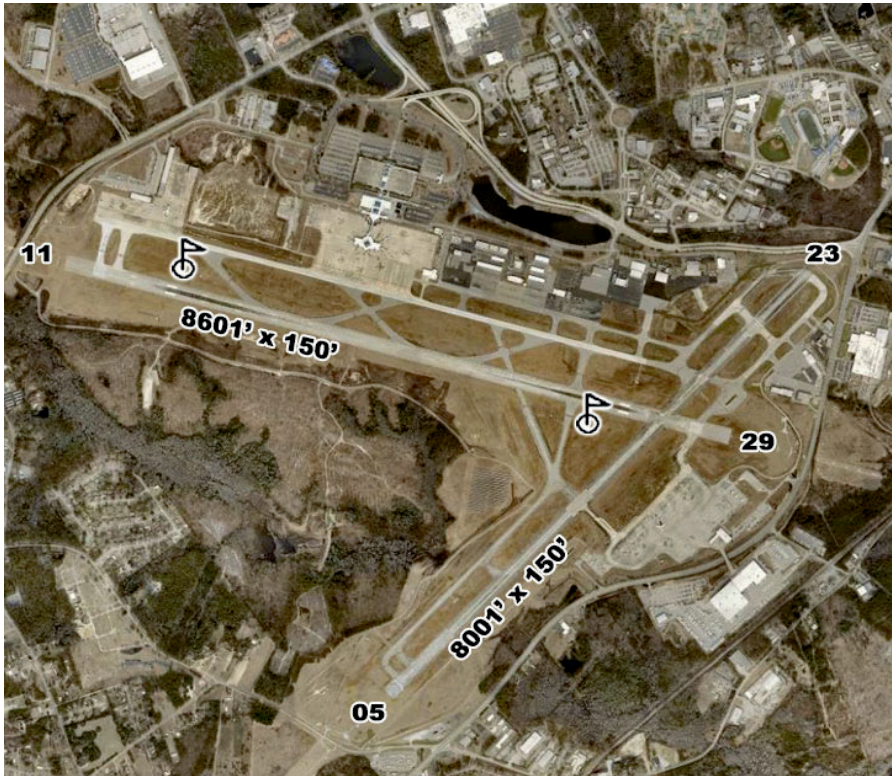
Storage TIE
Repairs Y
Landing Fee N
Oxygen N
Lighting Sched
Fuel Type N
Att Schedule MON-FRI 0800-DUSK/ SAT 0800-1200
Remarks Private Apt. - Public Use

CAE - COLUMBIA METROPOLITAN

CHARLOTTE SECTIONAL
12/26/2024

COLUMBIA - 17

Latitude: 33° 56' 19.8160" N
Longitude: 81° 07' 10.3300" W



Elevation - 236' MSL

Mag Var - 07° W

Runway					Edge	Approach	Traffic
ID	Length	Width	Surface	VGSI	REILS	Lights	Pattern
05/23	8001'	150'	ASPH-CONC	05/23	23	HIGH	05
11/29	8601'	150'	CONC	11/29		HIGH	11/29
H1	50'	50'	CONC			PERI	

Runway Pavement Strength					Navigation			
Runway	SW	DW	DTW	DDTW	IDENT	Type	FREQ	Direct/Dist
05/23	120.0	242.0	487.0	675.0	CAE	VORTAC	114.70	r328° 5.9 NM to fld
11/29	120.0	239.0	478.0	700.0				

Communications			ATIS	ATC		RCO	APP/DEP	AWOS/ASOS	
Tower	GRND	CL DEL	FREQ	FREQ	FAA ID	FREQ	BRNG/FREQ	FREQ	Phone
119.5	121.9	119.75	120.15	119.5	CAE	122.65	110° - 289° 124.1f 290° - 109° 133.4	N/A	(803) 822-4168

Manager Greg Hornsby
GPS 3250 Airport Blvd
Address Columbia, SC 29170
Phone (803) 822-5015
Fax (803) 822-5141
E-mail g.hornsby@flycae.com

FBO Phone/Fax
Eagle Aviation
(803) 822-5569
Bankair/Columbia Aviation
(803) 822-8332 (803) 822-8775

Storage HGR,TIE
Landing Fee N
Lighting Sched SS-SR
Repairs Y
Oxygen Y
Fuel Type 100LL, JET A

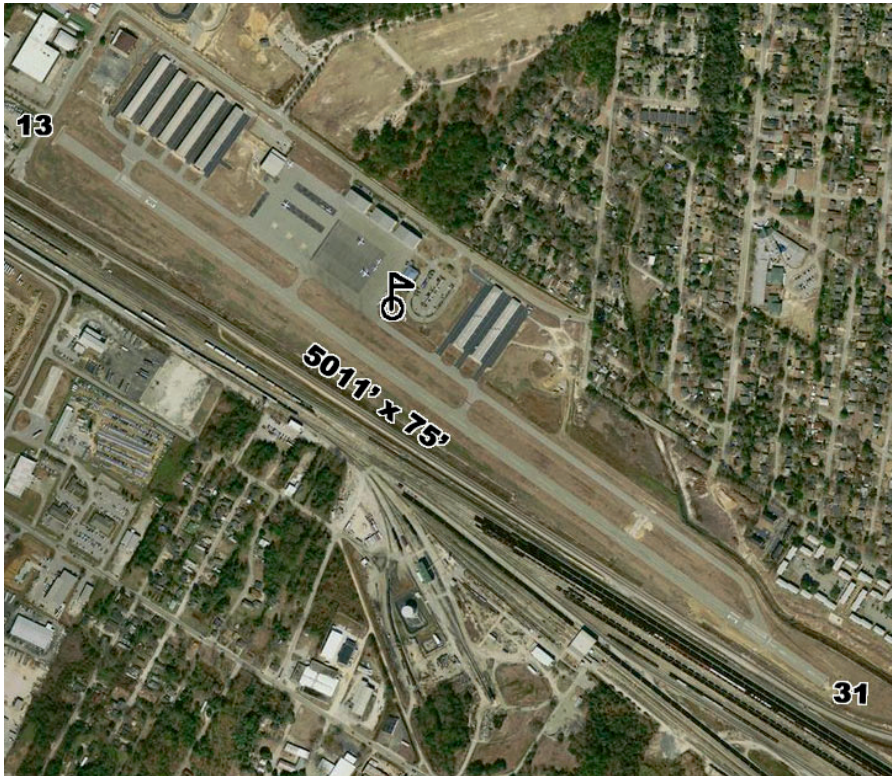
Att Schedule 24/7
Remarks FEE FOR COMMERCIAL AIRCRAFT ABOVE 15K lbs.
ULTRALIGHTS PROHIBITED NOISE ABATEMENT PROCEDURES UNICOM 122.95
24 HR TOWER - CLASS C AIRSPACE RWY 23 1000' DSPLED THLD RAMP FEE

CUB - JIM HAMILTON - L B OWENS

CHARLOTTE SECTIONAL
12/26/2024

COLUMBIA - 18

Latitude: 33° 58' 13.7000" N
Longitude: 80° 59' 42.9000" W



Elevation - 193' MSL

Mag Var - 07° W

Runway					Edge	Approach	Traffic
ID	Length	Width	Surface	VGSI	REILS	Lights	Pattern
13/31	5011'	75'	ASPH	13/31	13/31	MED	13 - RH

Runway Pavement Strength					Navigation			
Runway	SW	DW	DTW	DDTW	IDENT	Type	FREQ	Direct/Dist
13/31	44.5	66.0			CAE	VORTAC	114.70	r025° 7.4 NM to fld

Communications				ATC		AWOS/ASOS	
Unicom	CTAF	GCO	RCO	FREQ	FAA ID	FREQ	Phone
123.075	123.075		124.4	133.4	CAE	118.675	(803) 929-0665

Manager Peter Cevallos	Storage HGR,TIE	Repairs Y
GPS 1400 Jim Hamilton Blvd	Landing Fee N	Oxygen Y
Address Columbia, SC 29205	Lighting Sched SEE RMK	Fuel Type 100LL, JET A
Phone (803) 766-5617	Att Schedule Daily 0600-2000 (EDT) / 0600-1900 (EST)	
Fax	Remarks Avoid noise sensitive area north of airport below 1500'. No northbound departure turn below 1500'. APU available. Ramp Fee Service after hours (803) 771-7915 RWY 31 has 400' displaced threshold ACTVT MIRL AND REIL - CTAF COMPASS CAL PAD Pattern traffic squawk 0201 www.FlyKCUB.com	
E-mail cevallos.peter@richlandcountysc.go		
FBO Phone/Fax Eagle Aviation (803) 771-7915		

HYW - CONWAY-HORRY COUNTY

CHARLOTTE SECTIONAL
12/26/2024

CONWAY - 19

Latitude: 33° 49' 42.5550" N
Longitude: 79° 07' 19.8348" W



Elevation - 35' MSL

Mag Var - 09° W

Runway					Edge	Approach	Traffic
ID	Length	Width	Surface	VGSI	REILS	Lights	Pattern
04/22	4401'	75'	CONC	04/22	04/22	MED	Standard

Runway Pavement Strength					Navigation			
Runway	SW	DW	DTW	DDTW	IDENT	Type	FREQ	Direct/Dist
04/22	12.5	20.0			HYW CRE	NDB VORTAC	370 114.40	at fld r276° 19.8 NM to fld

Communications				ATC		AWOS/ASOS	
Unicom	CTAF	GCO	RCO	FREQ	FAA ID	FREQ	Phone
122.700	122.700			127.4	MYR	119.525	(843) 397-8046

Manager Judi Olmstead	Storage TIE	Repairs Y
GPS 1700 Airport Road	Landing Fee N	Oxygen N
Address Conway, SC 29527	Lighting Sched SEE RMK	Fuel Type 100LL, JET A
Phone (843) 448-1580	Att Schedule Daily 0900-1700	
Fax (843) 626-9096	Remarks ACTVT MIRL - CTAF	
E-mail olmsteaj@horrycountysc.org	After Hours access gate use Unicom	
FBO Phone/Fax	SELF SERVICE 100LL, JET A	
Beach Aviation Services		
(843) 397-9111 (843) 397-3776		

6J7 - BRANHAMS
 CHARLOTTE SECTIONAL
 12/26/2024

DARLINGTON - 20

Latitude: 34° 16' 53.5000" N
Longitude: 79° 55' 39.4000" W



Elevation - 166' MSL

Mag Var - 08° W

Runway					Edge	Approach	Traffic
ID	Length	Width	Surface	VGSI	REILS	Lights	Pattern
16/34	3200'	100'	TURF	16/34		LOW	16 - RH

Runway Pavement Strength					Navigation			
Runway	SW	DW	DTW	DDTW	IDENT	Type	FREQ	Direct/Dist
16/34					FLO	VORTAC	115.20	r285° 13.7 NM to fld

Communications				ATC		AWOS/ASOS	
Unicom	CTAF	GCO	RCO	FREQ	FAA ID	FREQ	Phone
	122.900						

Manager Dwayne Weatherford
GPS 1829 Hospitality Trail
Address Darlington, SC 29532
Phone (843) 307-0070
Fax
E-mail dw12sc@aol.com
FBO Phone/Fax

Storage TIE
Repairs Y
Landing Fee N
Oxygen N
Lighting Sched SEE RMK
Fuel Type N
Att Schedule UNATTENDED
Remarks ACTIVATE LIRL and VGSI - CTAF.
 Private Airport - Public Use

UDG - DARLINGTON COUNTY
 CHARLOTTE SECTIONAL
 12/26/2024

DARLINGTON - 21

Latitude: 34° 26' 50.9600" N
Longitude: 79° 53' 11.1270" W



Elevation - 192' MSL

Mag Var - 08° W

Runway					Edge		Approach	Traffic
ID	Length	Width	Surface	VGSI	REILS	Lights	Lights	Pattern
05/23	5500'	100'	CONC	05/23	05/23	MED	05	Standard

Runway Pavement Strength					Navigation			
Runway	SW	DW	DTW	DDTW	IDENT	Type	FREQ	Direct/Dist
05/23	17.0	27.0			FLO	VORTAC	115.20	r322° 17.2 NM to fld

Communications				ATC		AWOS/ASOS	
Unicom	CTAF	GCO	RCO	FREQ	FAA ID	FREQ	Phone
123.000	123.000	118.55		118.6	FLO	119.925	(843) 393-8220

Manager Barry Kennett
GPS 313 G Graham Segars Pkwy
Address Darlington, SC 29540
Phone (843) 393-9928
Fax (843) 393-9930
E-mail bkennett@darcosc.net
FBO Phone/Fax

Storage HGR,TIE
Repairs N
Landing Fee N
Oxygen N
Lighting Sched SEE RMK
Fuel Type 100LL, JET A
Att Schedule MON-FRI/0800-1700
Remarks RWY & TWY lights preset to low intensity;
 after 2300, use CTAF.
 After hours access through unlocked
 pedestrian gate.
 SELF SERVICE 100LL.

DLC - DILLON COUNTY
 CHARLOTTE SECTIONAL
 12/26/2024

DILLON - 22

Latitude: 34° 26' 56.6000" N
Longitude: 79° 22' 06.9000" W



Elevation - 133' MSL

Mag Var - 09° W

Runway					Edge	Approach	Traffic
ID	Length	Width	Surface	VGSI	REILS	Lights	Pattern
07/25	3000'	60'	ASPH			MED	Standard

Runway Pavement Strength					Navigation			
Runway	SW	DW	DTW	DDTW	IDENT	Type	FREQ	Direct/Dist
07/25	10.0				FLO	VORTAC	115.20	r051° 19.3 NM to fld

Communications				ATC		AWOS/ASOS	
Unicom	CTAF	GCO	RCO	FREQ	FAA ID	FREQ	Phone
	122.900			118.6	FLO		

Manager	Tim Harper	Storage	TIE	Repairs	N
GPS	1088 Airport Rd	Landing Fee	N	Oxygen	N
Address	Dillon, SC 29536	Lighting Sched	SS-SR	Fuel Type	N
Phone	(843) 774-1400				
Fax	(843) 774-1443	Att Schedule	UNATTENDED		
E-mail	tharper@dilloncountysc.org	Remarks	RWY 7/25 in fair condition		
FBO Phone/Fax					

7S1 - 7 OAKS FLIGHT PARK
 CHARLOTTE SECTIONAL
 12/26/2024

FAIRFAX - 23

Latitude: 32° 59' 54.9600" N
 Longitude: 81° 12' 30.0350" W



Elevation - 138' MSL

Mag Var - 07° W

Runway				Edge	Approach	Traffic
ID	Length	Width	Surface	VGSI	REILS	Lights
16/34	2350'	75'	TURF			Lights
						Pattern
						16 - RH

Runway Pavement Strength				
Runway	SW	DW	DTW	DDTW
16/34				

Communications				ATC		AWOS/ASOS	
Unicom	CTAF	GCO	RCO	FREQ	FAA ID	FREQ	Phone
	122.900						

Manager Larry Shumard	Storage	Repairs N
GPS 190 Maple Dr.	Landing Fee N	Oxygen N
Address Fairfax, SC 29827	Lighting Sched	Fuel Type N
Phone (208) 794-6052	Att Schedule UNATNDD	
Fax	Remarks	
E-mail voyager934@gmail.com		
FBO Phone/Fax		

FLO - FLORENCE RGNL
 CHARLOTTE SECTIONAL
 12/26/2024

FLORENCE - 24

Latitude: 34° 11' 07.3080" N
Longitude: 79° 43' 25.9790" W



Elevation - 147' MSL

Mag Var - 08° W

Runway					Edge		Approach	Traffic
ID	Length	Width	Surface	VGSI	REILS	Lights	Lights	Pattern
01/19	6000'	150'	ASPH	01/19	01/19	MED		Standard
09/27	6502'	150'	ASPH	09/27	27	HIGH	09	Standard

Runway Pavement Strength					Navigation			
Runway	SW	DW	DTW	DDTW	IDENT	Type	FREQ	Direct/Dist
01/19	87.0	139.0	238.0		FLO	VORTAC	115.20	r232° 4.4 NM to fld
09/27	97.0	156.0	261.0					

Communications			ATIS		ATC		RCO	APP/DEP		AWOS/ASOS	
Tower	GRND	CL DEL	FREQ	FREQ	FAA ID	FREQ	BRNG/FREQ	FREQ	Phone		
125.1	121.9	121.9	123.625	125.1	FLO	122.6	75-255/135.25 256-074/118.6	123.625	(843) 665-1306		

Manager Brad Beadles
GPS 2100 Terminal Drive
Address Florence, SC 29506
Phone (843) 519-0550
Fax (843) 665-4751
E-mail bbeadles@flyflo.us

Storage HGR,TIE
Repairs Y
Landing Fee N
Oxygen Y
Lighting Sched SEE RMK
Fuel Type 100LL, JET A

FBO Phone/Fax
 Precision Air
 (843) 667-9627 (843) 667-9838

Att Schedule Daily 0600-2000
Remarks Class "D" airspace 0630-2200 other times class "E"
 ASR - 0630-2200
 Unicom - 122.95
 WHEN Tower CLSD ACTVT HIRL RWY
 09/27, PAPI RWYS 01, 19, 09 & 27, MALSR
 RWY 09 AND TWY LGTS - CTAF.

GGE - GEORGETOWN COUNTY
 CHARLOTTE SECTIONAL
 12/26/2024

GEORGETOWN - 25

Latitude: 33° 18' 41.1000" N
 Longitude: 79° 19' 13.1000" W



Elevation - 40' MSL

Mag Var - 08° W

Runway					Edge		Approach	Traffic
ID	Length	Width	Surface	VGSI	REILS	Lights	Lights	Pattern
05/23	6005'	100'	ASPH	05/23	05	MED	05	Standard
11/29	4539'	150'	ASPH			MED		Standard

Runway Pavement Strength					Navigation			
Runway	SW	DW	DTW	DDTW	IDENT	Type	FREQ	Direct/Dist
05/23	40.0	60.0			CHS	VORTAC	113.50	r061° 44 NM to fld
11/29	20.0	30.0						

Communications				ATC		AWOS/ASOS	
Unicom	CTAF	GCO	RCO	FREQ	FAA ID	FREQ	Phone
123.000	123.000	121.725		127.4	MYR	118.275	(843) 527-3851

Manager Jim Taylor
GPS 129 Airport Rd
Address Georgetown, SC 29440
Phone (843) 545-3638
Fax
E-mail jtaylor@gtcounty.org
FBO Phone/Fax
 Seven Rivers Aviation
 (843) 527-7516 (843) 527-8017

Storage HGR,TIE
Repairs Y
Landing Fee N
Oxygen Y
Lighting Sched SEE RMK
Fuel Type 100LL, JET A
Att Schedule Daily 0600-2000
Remarks RWY 11/29 in poor condition
 RWY 11/29 lights - CTAF
 RWY 5/23 lights - Dusk-Dawn
 RAMP FEE After hours access gate via 4 digit Unicom freq.

S17 - TWIN LAKES
 ATLANTA SECTIONAL
 12/26/2024

GRANITEVILLE - 26

Latitude: 33° 38' 44.4890" N
Longitude: 81° 52' 01.4030" W



Elevation - 540' MSL

Mag Var - 07° W

Runway					Edge		Approach	Traffic
ID	Length	Width	Surface	VGSI	REILS	Lights	Lights	Pattern
06/24	4000'	60'	ASPH			NSTD		Standard

Runway Pavement Strength					Navigation			
Runway	SW	DW	DTW	DDTW	IDENT	Type	FREQ	Direct/Dist
06/24	12.5				IRQ	VORTAC	113.90	r108° 15.2 NM to fld

Communications				ATC		AWOS/ASOS	
Unicom	CTAF	GCO	RCO	FREQ	FAA ID	FREQ	Phone
	122.900						

Manager TJ Nelson
GPS 150 Piper Drive
Address Trenton, SC 29847
Phone (803) 640-7107
Fax
E-mail wjtnelson@gmail.com
FBO Phone/Fax

Storage
Landing Fee N
Lighting Sched SEE RMK
Repairs N
Oxygen N
Fuel Type N

Att Schedule UNATTENDED

Remarks RWY 6 displaced thld. 636'
 Flying Community/Airpark
 Runway CLOSED DUSK-DAWN
 Private Airport - Public Use
 Runway CLOSED 1-10-2025 Check NOTAMS

GMU - GREENVILLE DOWNTOWN

ATLANTA SECTIONAL
12/26/2024

GREENVILLE - 27

Latitude: 34° 50' 52.5540" N
Longitude: 82° 20' 59.9930" W



Elevation - 1048' MSL

Mag Var - 07° W

ID	Runway				Edge		Approach	Traffic
	Length	Width	Surface	VGSI	REILS	Lights	Lights	Pattern
01/19	5393'	100'	ASPH	01/19	19	HIGH	01	19 - RH
10/28	4000'	80'	ASPH	28	28	MED		28 - RH
H1	50'	50'	CONC			PERI		
H2	50'	50'	CONC			PERI		

Runway	Runway Pavement Strength				Navigation			
	SW	DW	DTW	DDTW	IDENT	Type	FREQ	Direct/Dist
01/19	61.0	81.0	151.0		SPA	VORTAC	115.70	r244° 23.6 NM to fld
10/28	43.5	62.0						

Communications		ATIS		ATC		RCO		APP/DEP		AWOS/ASOS	
Tower	GRND	CL DEL	FREQ	FREQ	FAA ID	FREQ	BRNG/FREQ	FREQ	Phone		
119.9	121.25		127.075	118.8	GSP					127.075	(864) 239-0014

Manager James D. Stephens
GPS 100 Tower Dr
Address Greenville, SC 29607
Phone (864) 242-4777
Fax (864) 242-4870
E-mail james@greenvilledowntownairport.com
FBO Phone/Fax
 Greenville Jet Center
 (864) 232-7100 (864) 235-6384

Storage HGR,TIE
Landing Fee N
Lighting Sched SEE RMK
Att Schedule M-F600-2100/S-S700-2000 FS/S-S1700-2000LMTD
Remarks Unicom 122.95, ATCT Operates 0700-2200
 CTAF/PCL 119.9 when ATCT CLSD.
 Class "D" Airspace 0700-2200,
 All oth tms Class "G";RWY10ThldDISP 265';
 RWY 28 Thld DISP 270';
 IF ATCT CLSD, USE PCL HIRL RWY 01/19;
 MIRL RWY 10/28 U/S when tower closed
 FBO Ramp Fee; Restaurant No Ramp Fee;
 SELF SERVICE 100LL

GYH - DONALDSON FIELD
 ATLANTA SECTIONAL
 12/26/2024

GREENVILLE - 28
 Latitude: 34° 45' 29.9260" N
 Longitude: 82° 22' 35.0900" W



Elevation - 956' MSL

Mag Var - 04° W

Runway					Edge	Approach	Traffic
ID	Length	Width	Surface	VGSI	REILS	Lights	Pattern
05/23	8000'	150'	CONC	05/23		HIGH	05 - RH

Runway Pavement Strength					Navigation			
Runway	SW	DW	DTW	DDTW	IDENT	Type	FREQ	Direct/Dist
05/23	94.0	121.0	199.0		SPA	VORTAC	115.70	r235° 27.6 NM to fld

Communications			ATIS	ATC		RCO	APP/DEP	AWOS/ASOS	
Tower	GRND	CL DEL	FREQ	FREQ	FAA ID	FREQ	BRNG/FREQ	FREQ	Phone
133.325	121.4	121.4		133.325	GYH			127.325 (864)	277-5674

Manager Danny Moyd	Storage HGR,TIE	Repairs Y
GPS 2 Exchange St	Landing Fee N	Oxygen Y
Address Greenville, SC 29605	Lighting Sched SEE RMK	Fuel Type 100LL, JET A
Phone (864) 277-3152		

Fax
E-mail danny.moyd@sc-tac.com

FBO Phone/Fax
 Donaldson Jet Center
 (864) 277-8184 (864) 277-1159

AvServe
 (864) 299-0314

Att Schedule Daily 0600-1900
Remarks Tower operates 0700-2100 Class D Airspace. After hours Class G airspace CTAF 133.325 ACTVT HIRL RWY 05/23, PAPI RWYS 05 & 23, MALSR RWY 05 - CTAF. AvServe after hours (864) 299-0314. Donaldson Jet Center After hours (864) 277-8184. After-Hrs ramp access via monitored unlocked pedestrian gate. Arrestor gear System - RWY 05 BAK-14 (1502 FT) RWY 23 Bak-14 (1703 FT)

GRD - GREENWOOD COUNTY

ATLANTA SECTIONAL
12/26/2024

GREENWOOD - 29

Latitude: 34° 15' 01.4175" N
Longitude: 82° 09' 28.1136" W



Elevation - 631' MSL

Mag Var - 07° W

Runway					Edge	Approach	Traffic
ID	Length	Width	Surface	VGSI	REILS	Lights	Pattern
05/23	3600'	60'	ASPH				Standard
09/27	5001'	100'	CONC	09/27	09/27	MED	27 Standard

Runway Pavement Strength

Runway	SW	DW	DTW	DDTW
09/27	89.0	122.0		
05/23				

Communications				ATC		AWOS/ASOS	
Unicom	CTAF	GCO	RCO	FREQ	FAA ID	FREQ	Phone
122.975	122.975		122.5	120.6	GSP	121.125	(864) 388-9115

Manager Rett Templeton	Storage TIE	Repairs Y
GPS 598 Terminal Rd	Landing Fee N	Oxygen N
Address Greenwood, SC 29649	Lighting Sched SEE RMK	Fuel Type 100LL, JET A
Phone (864) 942-8639	Att Schedule M-F 0730-1800/SA0800-1700/SU1100-1700	
Fax (864) 942-8580	Remarks Use CTAF for lights after 2300.	
E-mail rett.templeton@greenwoodsc.gov	After hours access via VOR freq.	
FBO Phone/Fax		
Aeronautical Service of Greenwood		
(864) 942-9634		

GSP - GREENVILLE SPARTANBURG INTL

GREER - 30

ATLANTA SECTIONAL
12/26/2024

Latitude: 34° 53' 44.4160" N
Longitude: 82° 13' 07.8940" W



Elevation - 964' MSL

Mag Var - 06° W

Runway					Edge	Approach	Traffic
ID	Length	Width	Surface	VGSI	REILS	Lights	Pattern
04/22	11001'	150'	ASPH-CONC	04/22		HIGH	04 - RH

Runway Pavement Strength					Navigation			
Runway	SW	DW	DTW	DDTW	IDENT	Type	FREQ	Direct/Dist
04/22	100.0	210.0	625.0	975.0	SPA	VORTAC	115.70	r242° 16.6 NM to fld

Communications			ATIS	ATC		RCO	APP/DEP	AWOS/ASOS	
Tower	GRND	CL DEL	FREQ	FREQ	FAA ID	FREQ	BRNG/FREQ	FREQ	Phone
120.1	121.9	121.9	134.25	118.8W	GSP	122.2	West/118.8	N/A	(864) 879-0614
				119.4E	GSP	122.65	East/119.4		

Manager David Edwards
GPS 2000 GSP Dr
Address Greer, SC 29651
Phone (864) 848-6272
Fax (864) 848-6225
E-mail dedwards@gspairport.com

Storage HGR,TIE
Landing Fee N
Lighting Sched SEE RMK
Repairs Y
Oxygen Y
Fuel Type 100LL, JET A

FBO Phone/Fax
 Cerulean General Aviation
 (864) 655-5221 (864) 655-5222

Att Schedule 24/7
Remarks UNICOM 122.95
 Tower operates 0600-2345
 CTAF 120.1 WHEN tower CLSD.
 Class "C" airspace 0600 - 2345, other times class "E"
 WHEN Tower CLSD ACTVT HIRL & MALSR
 RWY 22 - CTAF; ARFF Monitors CTAF
 Ramp Fee.

3J0 - HAMPTON COUNTY
 CHARLOTTE SECTIONAL
 12/26/2024

HAMPTON - 31

Latitude: 32° 51' 59.4400" N
Longitude: 81° 04' 51.4930" W



Elevation - 113' MSL

Mag Var - 07° W

Runway					Edge	Approach	Traffic
ID	Length	Width	Surface	VGSI	REILS	Lights	Pattern
11/29	3601'	60'	ASPH				Standard

Runway Pavement Strength					Navigation			
Runway	SW	DW	DTW	DDTW	IDENT	Type	FREQ	Direct/Dist
11/29	8.0				SAV	VORTAC	115.95	r014° 43.5 NM to fld

Communications				ATC		AWOS/ASOS	
Unicom	CTAF	GCO	RCO	FREQ	FAA ID	FREQ	Phone
	122.900						

Manager David Steinmeyer	Storage Tie	Repairs N
GPS 740 Airport Rd	Landing Fee N	Oxygen N
Address Varnville, SC 29944	Lighting Sched	Fuel Type 100LL, JET A
Phone (803) 942-3369	Att Schedule M-F 0800-1700	
Fax	Remarks AFTER HRS CALL (803) 942-3369	
E-mail dsteinmeyer@hamptoncountysc.org	SELF SERVE 100LL and JET A	
FBO Phone/Fax	4 CLICKS ON CTAF FOR WX	
	3 CLICKS ON CTAF FOR WIND	
	WX NOT IFR APPROVED-ADVISORY ONLY	
	https://www.wunderground.com/dashboard/pws/KSCVARNV3	

2QØ - FLYING W
 CHARLOTTE SECTIONAL
 12/26/2024

HARTSVILLE - 32

Latitude: 34° 25' 44.1200" N
 Longitude: 80° 04' 11.7800" W



Elevation - 292' MSL

Mag Var - N/A

Runway					Edge	Approach	Traffic
ID	Length	Width	Surface	VGSI	REILS	Lights	Pattern
10/28	1606'	130'	TURF				Standard

Runway Pavement Strength				
Runway	SW	DW	DTW	DDTW
10/28				

Communications				ATC		AWOS/ASOS	
Unicom	CTAF	GCO	RCO	FREQ	FAA ID	FREQ	Phone
	122.900						

Manager Ronald Winburn	Storage	Repairs N
GPS 2020 Ousleydale Road	Landing Fee	Oxygen N
Address Hartsville, SC 29550	Lighting Sched	Fuel Type N
Phone (843) 307-3503		
Fax	Att Schedule UNATTENDED	
E-mail cwinburn56@gmail.com	Remarks Private Airport - Public Use	
FBO Phone/Fax		

HVS - HARTSVILLE RGNL
 CHARLOTTE SECTIONAL
 12/26/2024

HARTSVILLE - 33

Latitude: 34° 24' 11.1000" N
 Longitude: 80° 07' 09.2000" W



Elevation - 364' MSL

Mag Var - 08° W

Runway					Edge	Approach	Traffic
ID	Length	Width	Surface	VGSI	REILS	Lights	Pattern
03/21	5000'	75'	ASPH	03/21		MED	03 - RH

Runway Pavement Strength					Navigation			
Runway	SW	DW	DTW	DDTW	IDENT	Type	FREQ	Direct/Dist
03/21	16.0	25.5			CTF HVS	VOR/DME NDB	114.55 341	r156° 16.7 NM to fld at fld

Communications				ATC		AWOS/ASOS	
Unicom	CTAF	GCO	RCO	FREQ	FAA ID	FREQ	Phone
122.800	122.800			125.4	SSC	118.225	(843) 339-9625

Manager Brandon Brown

GPS 1082 Hartsville Airport Rd

Address Hartsville, SC 29550

Phone (843) 383-1088

Fax

E-mail brandon.brown@hartsvillesc.gov

FBO Phone/Fax

RISEAERO

(910) 284-3166

Storage

HGR,TIE

Repairs Y

Landing Fee

N

Oxygen N

Lighting Sched

SEE RMK

Fuel Type 100LL, JET A

Att Schedule

M-F 0800-1700 SAT-SUN 0900-1700

Remarks

MIRL PRESET LOW INTSTY DUSK-2100;
 TO INCR INTSTY AND ACTVT MIRL AFTER
 2100 - CTAF.

Fuel after hrs. (843) 383-1088

HXD - HILTON HEAD
 CHARLOTTE SECTIONAL
 12/26/2024

HILTON HEAD ISLAND - 34

Latitude: 32° 13' 28.1820" N
Longitude: 80° 41' 50.6430" W



Elevation - 19' MSL

Mag Var - 07° W

Runway					Edge		Approach	Traffic
ID	Length	Width	Surface	VGSI	REILS	Lights	Lights	Pattern
03/21	5000'	100'	ASPH	03/21	03/21	MED		Standard

Runway Pavement Strength					Navigation			
Runway	SW	DW	DTW	DDTW	IDENT	Type	FREQ	Direct/Dist
03/21	55.0	75.0			SAV	VORTAC	115.95	r086° 25.9 NM to fld

Communications			ATIS		ATC		RCO	APP/DEP		AWOS/ASOS	
Tower	GRND	CL DEL	FREQ	FREQ	FAA ID	FREQ	BRNG/FREQ	FREQ	Phone		
118.975	121.1	121.1	121.4	125.3	SAV	122.55			121.400	(843) 342-5072	

Manager Jon Rembold
GPS 120 Beach City Rd
Address Hilton Head Island, SC 29926
Phone (843) 441-5871
Fax
E-mail jrembold@bcgov.net

Storage TIE
Repairs Y
Landing Fee N
Oxygen N
Lighting Sched SEE RMK
Fuel Type 100LL, JET A

FBO Phone/Fax
 Signature Flight Support
 (551) 283-3413

Att Schedule Daily 0600-2200
Remarks NOISE ABATEMENT PROCS. RAMP FEE.
 TOWER OPERATES 0700-2100
 ACTVT MIRL AND REIL CTAF 118.975
 AFTR-HRS ACCESS FEE BY PRIOR
 ARRNGMNT (843) 689-3200.
 EMAS RWY 3 AND RWY 21

5J5 - HOLLY HILL
 CHARLOTTE SECTIONAL
 12/26/2024

HOLLY HILL - 35

Latitude: 33° 18' 05.4900" N
Longitude: 80° 23' 35.0900" W



Elevation - 96' MSL

Mag Var - 05° W

Runway					Edge	Approach	Traffic	
ID	Length	Width	Surface	VGSI	REILS	Lights	Lights	Pattern
04/22	3900'	75'	TURF					Standard

Runway Pavement Strength					Navigation			
Runway	SW	DW	DTW	DDTW	IDENT	Type	FREQ	Direct/Dist
04/22					VAN	VORTAC	110.40	r171° 10.8 NM to fld

Communications				ATC		AWOS/ASOS	
Unicom	CTAF	GCO	RCO	FREQ	FAA ID	FREQ	Phone
							122.900

Manager Billy N. Chavis	Storage TIE	Repairs N
GPS 140 Airport Rd	Landing Fee N	Oxygen N
Address Holly Hill, SC 29059	Lighting Sched	Fuel Type N
Phone (803) 496-3330		
Fax	Att Schedule UNATTENDED	
E-mail mayorofhollyhill@gmail.com	Remarks	
FBO Phone/Fax		

CKI - WILLIAMSBURG RGNL
 CHARLOTTE SECTIONAL
 12/26/2024

KINGSTREE - 36

Latitude: 33° 43' 02.0000" N
Longitude: 79° 51' 25.1000" W



Elevation - 66' MSL

Mag Var - 08° W

Runway					Edge	Approach	Traffic
ID	Length	Width	Surface	VGSI	REILS	Lights	Pattern
14/32	5000'	75'	ASPH	14/32		MED	Standard

Runway Pavement Strength					Navigation			
Runway	SW	DW	DTW	DDTW	IDENT	Type	FREQ	Direct/Dist
14/32	30.0	45.0			VAN	VORTAC	110.40	r070° 33 NM to fld

Communications				ATC		AWOS/ASOS	
Unicom	CTAF	GCO	RCO	FREQ	FAA ID	FREQ	Phone
122.700	122.700			127.4	MYR	124.775	(843) 382-3000

Manager John Hudson
GPS 85 Aviation Dr
Address Kingstree, SC 29556
Phone (843) 372-2255
Fax
E-mail fly2grace@gmail.com
FBO Phone/Fax

Storage TIE
Repairs N
Landing Fee N
Oxygen N
Lighting Sched SEE RMK
Fuel Type 100LL
Att Schedule Tue and Thur 0800-1700 other times by appt.
Remarks ACTVT MIRL AND PAPI - CTAF.
 SELF SERVICE 100LL
 Aircraft Repairs on field - Call manager

51J - LAKE CITY MUNI CJ EVANS FIELD

CHARLOTTE SECTIONAL
12/26/2024

LAKE CITY - 37

Latitude: 33° 51' 12.8900" N
Longitude: 79° 46' 05.2280" W



Elevation - 80' MSL

Mag Var - 08° W

Runway					Edge	Approach	Traffic
ID	Length	Width	Surface	VGSI	REILS	Lights	Pattern
01/19	3700'	75'	ASPH	01/19		MED	Standard

Runway Pavement Strength					Navigation			
Runway	SW	DW	DTW	DDTW	IDENT	Type	FREQ	Direct/Dist
01/19	10.0				FLO	VORTAC	115.20	r197° 23.4 NM to fld

Communications				ATC		AWOS/ASOS	
Unicom	CTAF	GCO	RCO	FREQ	FAA ID	FREQ	Phone
	122.900			135.25	FLO		

Manager Dusan Fridl	Storage TIE	Repairs N
GPS 236 Clifton Rd	Landing Fee N	Oxygen N
Address Lake City, SC 29560	Lighting Sched SEE RMK	Fuel Type N
Phone (843) 687-6490		
Fax	Att Schedule UNATTENDED	
E-mail dusanfridl@hotmail.com	Remarks ACTVT MIRL - CTAF.	
FBO Phone/Fax		

LKR - LANCASTER COUNTY-MC WHIRTER FIELD
 CHARLOTTE SECTIONAL
 12/26/2024

LANCASTER - 38

Latitude: 34° 43' 22.4558" N
Longitude: 80° 51' 16.5243" W



Elevation - 486' MSL

Mag Var - 08° W

Runway					Edge	Approach	Traffic
ID	Length	Width	Surface	VGSI	REILS	Lights	Pattern
06/24	6004'	101'	CONC	06/24	06/24	MED	Standard

Runway Pavement Strength					Navigation			
Runway	SW	DW	DTW	DDTW	IDENT	Type	FREQ	Direct/Dist
06/24	44.0	60.0	118.0		LKR CLT	NDB VORTAC	400 115.00	at fld r175° 28.4 NM to fld

Communications				ATC		AWOS/ASOS	
Unicom	CTAF	GCO	RCO	FREQ	FAA ID	FREQ	Phone
122.725	122.725			120.05	CLT	120.825	(803) 286-6444

Manager Paul Moses / Director

GPS 286 Aviation Blvd

Address Lancaster, SC 29720

Phone (803) 285-1513

Fax (877) 241-7297

E-mail pmoses@lancastersc.net

FBO Phone/Fax

Lancaster County Airport

(803) 285-1513

Storage HGR,TIE

Landing Fee Y

Lighting Sched SEE RMK

Att Schedule M-F 0700-1500

Remarks ACTVT MIRL - CTAF
 TERMINAL ACCESS KEYPAD FIRST FIVE
 DIGITS UNICOM PLUS ASTERISK KEY.
 SELF SERVICE 100LL and JET A

Repairs N

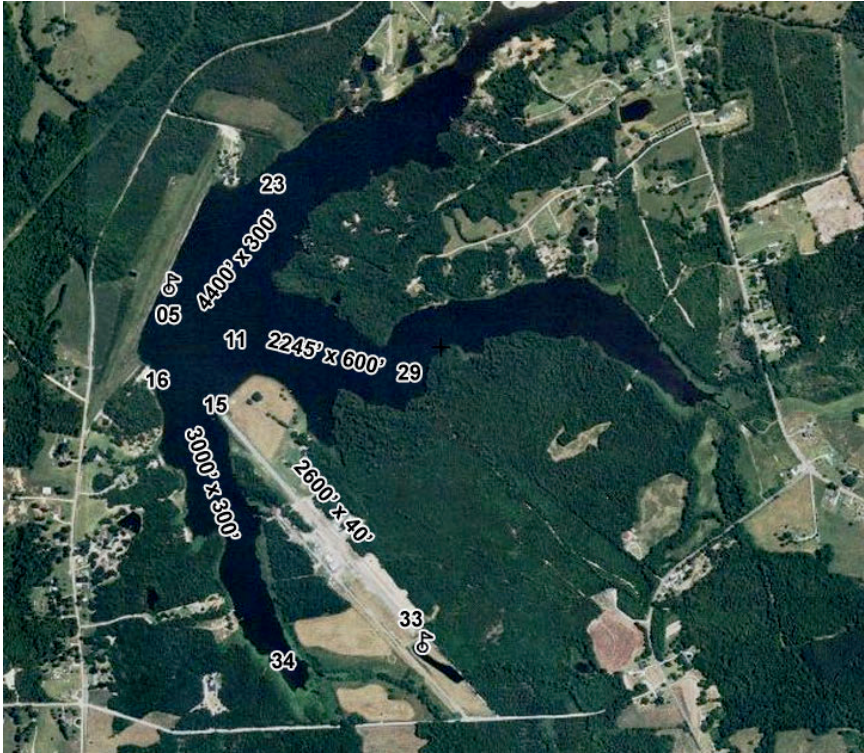
Oxygen N

Fuel Type 100LL, JET A

T73 - KIRK AIR BASE
 CHARLOTTE SECTIONAL
 12/26/2024

LANCASTER - 39

Latitude: 34° 40' 27.5410" N
Longitude: 80° 40' 56.2470" W



Elevation - 578' MSL

Mag Var - 08° W

Runway				Edge	Approach	Traffic		
ID	Length	Width	Surface	VGSI	REILS	Lights	Lights	Pattern
05W/23W	4400'	300'	WATER					Standard
11W/29W	2245'	600'	WATER					Standard
15/33	2600'	40'	ASPH			LOW		Standard
16W/34W	3000'	300'	WATER					Standard

Runway Pavement Strength				Navigation				
Runway	SW	DW	DTW	DDTW	IDENT	Type	FREQ	Direct/Dist
05W/23W					CTF	VOR/DME	114.55	r277° 20.2 NM to fld
11W/29W								
15/33	8.0							
16W/34W								

Communications				ATC		AWOS/ASOS	
Unicom	CTAF	GCO	RCO	FREQ	FAA ID	FREQ	Phone

122.900

Manager James B. Kirk
GPS 1007 Kirk Air Base Rd
Address Lancaster, SC 29720
Phone (803) 286-8800
Fax
E-mail kirkairbase@comporium.net
FBO Phone/Fax

Storage TIE
Landing Fee N
Lighting Sched SEE RMK
Repairs Y
Oxygen N
Fuel Type 100LL

Att Schedule MON-SAT 0800-DUSK
Remarks water lanes not marked- lengths change with water levels, contact manager.
 FOR LIRL RWY 15/33 CALL (803) 286-8800.
 Private Apt. - Public Use
 100LL available 24/7

33A - FAIRVIEW

ATLANTA SECTIONAL
12/26/2024

LANDRUM - 40

Latitude: 35° 09' 26.4000" N
Longitude: 82° 07' 25.5000" W



Elevation - 1046' MSL

Mag Var - 07° W

Runway					Edge	Approach	Traffic
ID	Length	Width	Surface	VGSI	REILS	Lights	Pattern
14/32	2770'	30'	ASPH			LOW	14 - RH

Runway Pavement Strength					Navigation			
Runway	SW	DW	DTW	DDTW	IDENT	Type	FREQ	Direct/Dist
14/32	6.5				SPA	VORTAC	115.70	r310° 12.2 NM to fld

Communications				ATC		AWOS/ASOS	
Unicom	CTAF	GCO	RCO	FREQ	FAA ID	FREQ	Phone
	122.900						

Manager Brian Beaudin
GPS 80 Airport Rd
Address Campobello, SC 29322
Phone (864) 684-8610
Fax
E-mail geegofly1@aol.com
FBO Phone/Fax

Storage TIE
Repairs N
Landing Fee N
Oxygen N
Lighting Sched SEE RMK
Fuel Type N
Att Schedule UNATTENDED
Remarks RWY 14/32 IN POOR CONDITION
Private Airport - Public Use
SOUTH END OF RWY 14 HAS 800' OF UNFINISHED ASPHALT OVERRUN

LUX - LAURENS COUNTY
 CHARLOTTE SECTIONAL
 12/26/2024

LAURENS - 41

Latitude: 34° 30' 25.6000" N
Longitude: 81° 56' 49.0000" W



Elevation - 698' MSL

Mag Var - 07° W

Runway					Edge		Approach	Traffic
ID	Length	Width	Surface	VGSI	REILS	Lights	Lights	Pattern
08/26	4051'	75'	CONC	08/26	08/26	MED		Standard

Runway Pavement Strength				
Runway	SW	DW	DTW	DDTW
08/26	12.5			

Communications				ATC		AWOS/ASOS	
Unicom	CTAF	GCO	RCO	FREQ	FAA ID	FREQ	Phone
122.800	122.800			120.6	GSP	123.975	(864) 682-3639

Manager G. A. "Bud" Boyter
GPS 3985 Torrington Rd
Address Laurens, SC 29360
Phone (864) 923-3507
Fax
E-mail gaboyt@prtcnet.com
FBO Phone/Fax

Storage TIE
Landing Fee N
Lighting Sched SEE RMK
Att Schedule MON-SAT 0900-1700 SUN 1300-1700
Remarks ACTVT MIRL - CTAF
 SELF SERVICE 100LL

Repairs Y
Oxygen N
Fuel Type 100LL

5J9 - TWIN CITY

CHARLOTTE SECTIONAL
12/26/2024

LORIS - 42

Latitude: 34° 05' 18.3000" N
Longitude: 78° 51' 53.7000" W



Elevation - 99' MSL

Mag Var - 08° W

Runway					Edge	Approach	Traffic
ID	Length	Width	Surface	VGSI	REILS	Lights	Pattern
08/26	3694'	60'	ASPH	26		LOW	Standard

Runway Pavement Strength					Navigation			
Runway	SW	DW	DTW	DDTW	IDENT	Type	FREQ	Direct/Dist
08/26	8.0				CRE	VORTAC	114.40	r340° 17.9 NM to fld

Communications				ATC		AWOS/ASOS	
Unicom	CTAF	GCO	RCO	FREQ	FAA ID	FREQ	Phone
	122.900			119.2	MYR		

Manager Judi Olmstead	Storage TIE	Repairs N
GPS 1326 Tory Hill Rd	Landing Fee N	Oxygen N
Address Loris, SC 29569	Lighting Sched DUSK-DAWN	Fuel Type N
Phone (843) 448-1580	Att Schedule UNATTENDED	
Fax (843) 626-9096	Remarks ACTVT LIRL - CTAF	
E-mail olmsteaj@horrycountysc.org		
FBO Phone/Fax		

MNI - SANTEE COOPER RGNL

CHARLOTTE SECTIONAL
12/26/2024

MANNING - 43

Latitude: 33° 35' 13.5620" N
Longitude: 80° 12' 31.2120" W



Elevation - 102' MSL

Mag Var - 08° W

Runway					Edge	Approach	Traffic
ID	Length	Width	Surface	VGSI	REILS	Lights	Pattern
02/20	3602'	75'	ASPH	02/20		MED	Standard

Runway Pavement Strength					Navigation			
Runway	SW	DW	DTW	DDTW	IDENT	Type	FREQ	Direct/Dist
02/20	30.0				MNI	NDB	381	at fld
					VAN	VORTAC	110.40	r67° 13.8 to fld

Communications				ATC		AWOS/ASOS	
Unicom	CTAF	GCO	RCO	FREQ	FAA ID	FREQ	Phone
122.800	122.800			125.4	SSC	120.175	(803) 478-6060

Manager Vickie Williams
GPS 8606 Highway 260
Address Manning, SC 29102
Phone (803) 433-4004

Fax
E-mail grants@clarendoncountygov.org

FBO Phone/Fax
Precision Air Inc.
(803) 478-4764

Storage TIE
Landing Fee N
Lighting Sched SEE RMK
Repairs Y
Oxygen N
Fuel Type 100LL, JET A

Att Schedule MON-FRI 0800-1700
Remarks MIRL PRESET LOW INTST DUSK-2300; TO INCR INTST - CTAF. SELF SERVICE 100LL AND JET A

MAO - MARION COUNTY
 CHARLOTTE SECTIONAL
 12/26/2024

MARION - 44

Latitude: 34° 10' 52.1980" N
 Longitude: 79° 20' 04.9910" W



Elevation - 92' MSL

Mag Var - 09° W

Runway					Edge	Approach	Traffic
ID	Length	Width	Surface	VGSI	REILS	Lights	Pattern
04/22	4505'	100'	ASPH	04/22		MED	04,22 - RH

Runway Pavement Strength					Navigation			
Runway	SW	DW	DTW	DDTW	IDENT	Type	FREQ	Direct/Dist
04/22	30.5	46.5			FLO	VORTAC	115.20	r104° 16.3NM to fld

Communications				ATC		AWOS/ASOS	
Unicom	CTAF	GCO	RCO	FREQ	FAA ID	FREQ	Phone
122.800	122.800			135.25	FLO	119.875	(843) 423-4231

Manager Charles Taylor	Storage HGR,TIE	Repairs N
GPS 225 Airport Ct	Landing Fee N	Oxygen N
Address Mullins, SC 29574	Lighting Sched SS-SR	Fuel Type 100LL, JET A
Phone (843) 423-8265		
Fax	Att Schedule Daily 0700-1700	
E-mail ctaylor@marionsc.org	Remarks Self Service 100LL and JET A	
FBO Phone/Fax		

S19 - MC CORMICK COUNTY
 ATLANTA SECTIONAL
 12/26/2024

MC CORMICK - 45

Latitude: 33° 54' 29.1490" N
 Longitude: 82° 16' 00.9480" W



Elevation - 459' MSL

Mag Var - 07° W

Runway					Edge	Approach	Traffic
ID	Length	Width	Surface	VGSI	REILS	Lights	Pattern
18/36	3598'	75'	ASPH				Standard

Runway Pavement Strength				
Runway	SW	DW	DTW	DDTW
18/36	12.5			

Communications				ATC		AWOS/ASOS	
Unicom	CTAF	GCO	RCO	FREQ	FAA ID	FREQ	Phone
	122.900						

Manager Mark H. Warner	Storage TIE	Repairs N
GPS 478 Airport Rd	Landing Fee N	Oxygen N
Address McCormick, SC 29835	Lighting Sched SEE RMK	Fuel Type N
Phone (864) 602-9082		
Fax	Att Schedule UNATTENDED	
E-mail mwarner@mccormickcountysc.org	Remarks BEACON AND MIRL OUT OF SERVICE INDEFINITELY	
FBO Phone/Fax	NO NIGHT OPERATIONS	

MKS - BERKELEY COUNTY
 CHARLOTTE SECTIONAL
 12/26/2024

MONCKS CORNER - 46

Latitude: 33° 11' 05.4130" N
Longitude: 80° 02' 13.1150" W



Elevation - 74' MSL

Mag Var - 08° W

Runway					Edge	Approach	Traffic
ID	Length	Width	Surface	VGSI	REILS	Lights	Pattern
05/23	5001'	75'	CONC	23		MED	Standard

Runway Pavement Strength					Navigation			
Runway	SW	DW	DTW	DDTW	IDENT	Type	FREQ	Direct/Dist
05/23	35.0	52.0			CHS	VORTAC	113.50	r05° 17.4 NM to fld

Communications				ATC		AWOS/ASOS	
Unicom	CTAF	GCO	RCO	FREQ	FAA ID	FREQ	Phone
123.050	123.050			119.3	CHS	119.175	(843) 761-1486

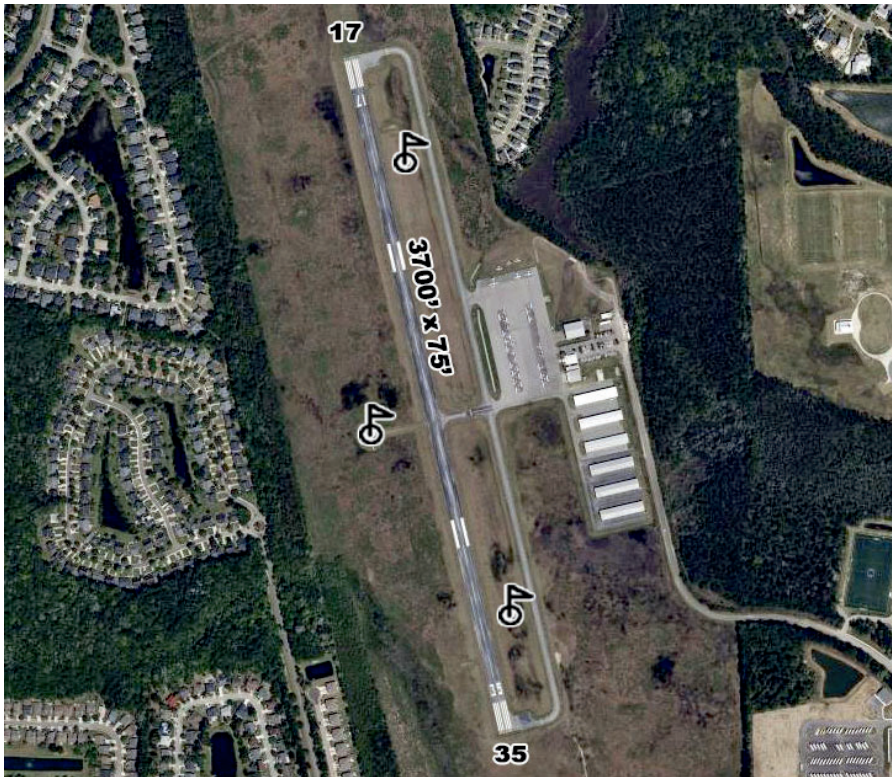
Manager	Stacy Thomas	Storage	HGR,TIE	Repairs	Y
GPS	616 Whitesville Rd	Landing Fee	N	Oxygen	N
Address	Moncks Corner, SC 29461	Lighting Sched	SEE RMK	Fuel Type	100LL, JET A
Phone	(843) 719-4751	Att Schedule	Daily 0800-1800		
Fax	(843) 719-4752	Remarks	ACTVT MIRL - CTAF. AFTER HRS SERVICE CONTACT FBO SELF SERVICE 100LL and JET A RWY 5 DSPLCD TH 650'		
E-mail	stacy.thomas@berkeleycountysc.gov				
FBO Phone/Fax					

LRO - MT PLEASANT RGNL-FAISON FIELD

CHARLOTTE SECTIONAL
12/26/2024

MOUNT PLEASANT - 47

Latitude: 32° 53' 52.2000" N
Longitude: 79° 46' 58.3000" W



Elevation - 11' MSL

Mag Var - 08° W

Runway					Edge	Approach	Traffic
ID	Length	Width	Surface	VGSI	REILS	Lights	Pattern
17/35	3700'	75'	ASPH	17/35		MED	35 - RH

Runway Pavement Strength					Navigation			
Runway	SW	DW	DTW	DDTW	IDENT	Type	FREQ	Direct/Dist
17/35	12.5				CHS	VORTAC	113.50	r094° 12.9 NM to fld

Communications				ATC		AWOS/ASOS	
Unicom	CTAF	GCO	RCO	FREQ	FAA ID	FREQ	Phone
122.700	122.700			135.8	CHS	118.625	(843) 849-0438

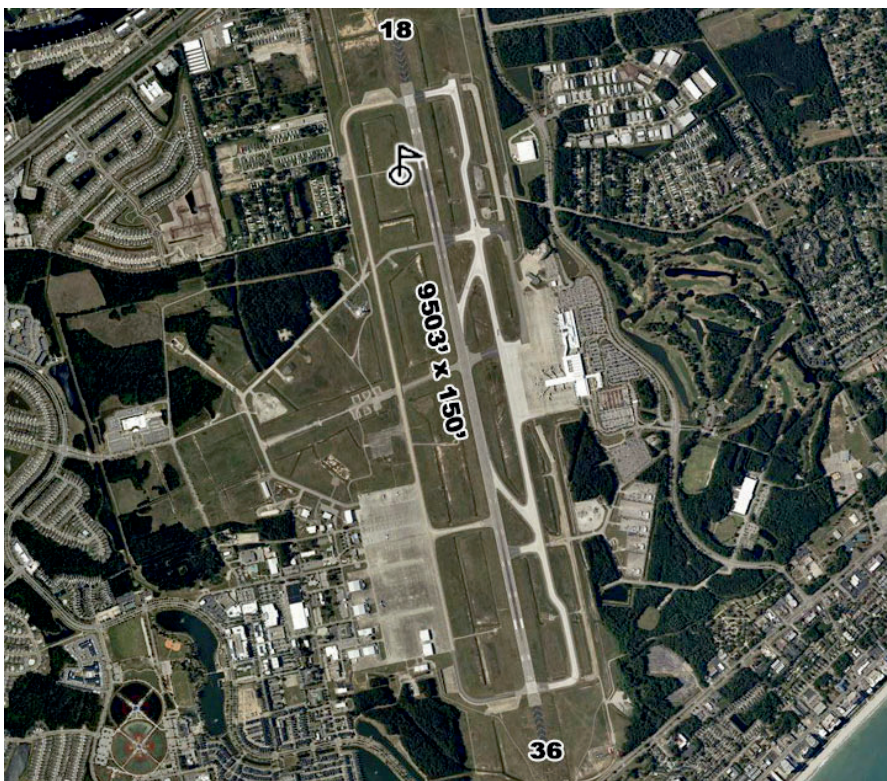
Manager Elliott Summey
GPS 700 Faison Rd
Address Mount Pleasant, SC 29466
Phone (843) 767-7000
Fax
E-mail esummey@iflychs.com
FBO Phone/Fax
 Charleston County Aviation Authority
 (843) 767-7212

Storage TIE
Repairs Y
Landing Fee N
Oxygen N
Lighting Sched SEE RMK
Fuel Type 100LL, JET A
Att Schedule Daily 0600-2000
Remarks Ramp Fee
 ACTVT MIRL RWY 17/35 - CTAF.

MYR - MYRTLE BEACH INTL
 CHARLOTTE SECTIONAL
 12/26/2024

MYRTLE BEACH - 48

Latitude: 33° 40' 47.0680" N
 Longitude: 78° 55' 41.9570" W



Elevation - 25' MSL

Mag Var - 09° W

Runway					Edge	Approach	Traffic
ID	Length	Width	Surface	VGSI	REILS	Lights	Pattern
18/36	9503'	150'	ASPH	18/36		HIGH	18 - RH

Runway Pavement Strength					Navigation			
Runway	SW	DW	DTW	DDTW	IDENT	Type	FREQ	Direct/Dist
18/36	120.0	233.0	424.0	943.0	CRE	VORTAC	114.40	r235° 13.0 NM to fld

Communications			ATIS	ATC		RCO	APP/DEP	AWOS/ASOS	
Tower	GRND	CL DEL	FREQ	FREQ	FAA ID	FREQ	BRNG/FREQ	FREQ	Phone
128.45	120.3	120.3	123.925	119.2	MYR		322-170/119.2	123.925	(843) 238-0335
				127.4	MYR		171-321/127.4		

Manager	Judi Olmstead	Storage	TIE	Repairs	Y
GPS	1100 Jetport Rd	Landing Fee		Oxygen	N
Address	Myrtle Beach, SC 29577	Lighting Sched	SEE RMK	Fuel Type	100LL, JET A
Phone	(843) 448-1580	Att Schedule	Daily 0600-2100		
Fax	(843) 626-9096	Remarks	Unicom 122.95; Ramp Fee Class C Airspace 0600-2300 other times Class G IF ATCT CLSD ACTVT HIRL CTAF 128.45 FBO OFFERS FS/SS 100LL, FS JET A		
E-mail	olmsteaj@horrycountysc.org				
FBO Phone/Fax					

EOE - NEWBERRY COUNTY
 CHARLOTTE SECTIONAL
 12/26/2024

NEWBERRY - 49

Latitude: 34° 18' 33.6000" N
 Longitude: 81° 38' 26.4000" W



Elevation - 570' MSL

Mag Var - 07° W

Runway					Edge	Approach	Traffic
ID	Length	Width	Surface	VGSI	REILS	Lights	Pattern
04/22	4001'	75'	ASPH	04/22		MED	22 - RH

Runway Pavement Strength					Navigation			
Runway	SW	DW	DTW	DDTW	IDENT	Type	FREQ	Direct/Dist
04/22	23.0	30.0			EOE	NDB	278	at fld

Communications				ATC		AWOS/ASOS	
Unicom	CTAF	GCO	RCO	FREQ	FAA ID	FREQ	Phone
122.800	122.800			133.4	CAE	124.275	(803) 276-2419

Manager Josh Rowe	Storage TIE	Repairs Y
GPS 1239 Airport Rd	Landing Fee N	Oxygen N
Address Newberry, SC 29108	Lighting Sched SEE RMK	Fuel Type 100LL
Phone (803) 321-2180		
Fax	Att Schedule UNATTENDED	
E-mail jrowe@newberrycounty.gov	Remarks ACTVT PAPI, MIRL - CTAF.	
FBO Phone/Fax	After hours access use Unicom	
	SELF SERVICE 100LL	

CRE - GRAND STRAND
 CHARLOTTE SECTIONAL
 12/26/2024

NORTH MYRTLE BEACH - 50

Latitude: 33° 48' 42.3000" N
Longitude: 78° 43' 26.2000" W



Elevation - 32' MSL

Mag Var - 09° W

Runway					Edge		Approach	Traffic
ID	Length	Width	Surface	VGSI	REILS	Lights	Lights	Pattern
05/23	5997'	100'	ASPH	05/23	05	HIGH	23	23 - RH

Runway Pavement Strength					Navigation			
Runway	SW	DW	DTW	DDTW	IDENT	Type	FREQ	Direct/Dist
05/23	76.0	112.0			CRE	VORTAC	114.40	at fld

Communications		ATIS		ATC		RCO	APP/DEP	AWOS/ASOS	
Tower	GRND	CL DEL	FREQ	FREQ	FAA ID	FREQ	BRNG/FREQ	FREQ	Phone
124.6	121.8		119.625	119.2	MYR	122.6 114.4T 122.1R		119.625	(843) 361-2802

Manager Judi Olmstead
GPS 2800 Terminal St
Address North Myrtle Beach, SC 29582
Phone (843) 448-1580
Fax (843) 626-9096
E-mail olmsteaj@horrycountysc.org

Storage HGR,TIE
Landing Fee N
Lighting Sched SEE RMK
Repairs N
Oxygen N
Fuel Type 100LL, JET A

FBO Phone/Fax
 Beach Aviation Services
 (843) 848-7400 (843) 272-5822

Att Schedule Daily 0700-2100
Remarks Extensive banner tow operations from airport along coastline 10 NM NE to 20 NM SW. Class D airspace 0700-2100 CTAF 124.6 Class G airspace when tower not operating. AFTER 0000 ACTVT HIRL; REIL RWY 05 AND MALSR RWY 23 - CTAF 124.6. For after hours access contact FBO. Unicom 122.95 Ramp Fee
 FBO offers FS/SS 100LL, FS JET A

1DS - DRY SWAMP
 CHARLOTTE SECTIONAL
 12/26/2024

ORANGEBURG - 51

Latitude: 33° 23' 03.3400" N
 Longitude: 80° 54' 25.2900" W



Elevation - 180' MSL

Mag Var - 07° W

Runway					Edge	Approach	Traffic
ID	Length	Width	Surface	VGSI	REILS	Lights	Pattern
02/20	2900'	60'	TURF				Standard

Runway Pavement Strength					Navigation			
Runway	SW	DW	DTW	DDTW	IDENT	Type	FREQ	Direct/Dist
02/20					VAN	VORTAC	110.40	r263° 23.6 NM to fld

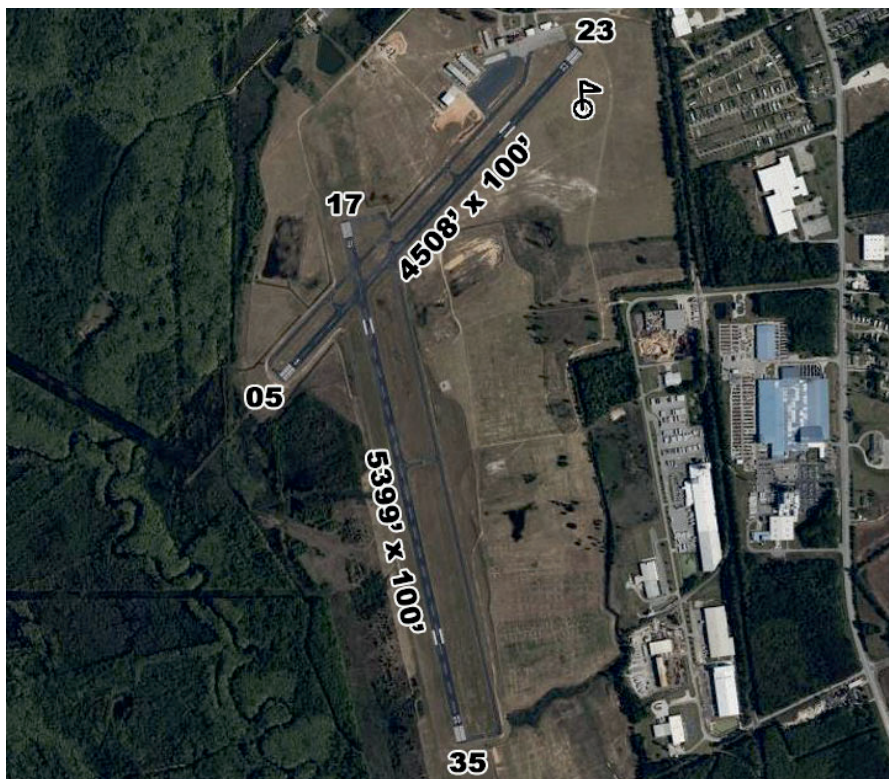
Communications				ATC		AWOS/ASOS	
Unicom	CTAF	GCO	RCO	FREQ	FAA ID	FREQ	Phone
							122.900

Manager Kurt Von Graff	Storage HGR	Repairs Y
GPS 126 Dry Swamp Rd	Landing Fee	Oxygen N
Address Cordova, SC 29039	Lighting Sched	Fuel Type 100LL
Phone (803) 534-3157		
Fax	Att Schedule Daily SR-SS	
E-mail kurt@dryswhampairport.com	Remarks Private Airport - Public Use	
FBO Phone/Fax	Aviation museum on the field	

OGB - ORANGEBURG MUNI
 CHARLOTTE SECTIONAL
 12/26/2024

ORANGEBURG - 52

Latitude: 33° 27' 24.9041" N
Longitude: 80° 51' 33.8640" W



Elevation - 195' MSL

Mag Var - 07° W

Runway					Edge	Approach	Traffic
ID	Length	Width	Surface	VGSI	REILS	Lights	Pattern
05/23	4508'	100'	ASPH	05	23	MED	05 - RH
17/35	5399'	100'	ASPH	17/35	17/35	MED	17/35 Standard

Runway Pavement Strength					Navigation			
Runway	SW	DW	DTW	DDTW	IDENT	Type	FREQ	Direct/Dist
05/23	30.0	50.0			VAN	VORTAC	110.40	r270° 20.6NM to fld
17/35	30.0	72.0						

Communications				ATC		AWOS/ASOS	
Unicom	CTAF	GCO	RCO	FREQ	FAA ID	FREQ	Phone
122.700	122.700		125.675	124.15	CAE	118.525	(803) 536-3901

Manager Betty Baker	Storage TIE	Repairs Y
GPS 1811 Airport Rd	Landing Fee N	Oxygen N
Address Orangeburg, SC 29115	Lighting Sched SEE RMK	Fuel Type 100LL, JET A
Phone (803) 534-5545	Att Schedule MON-FRI 0700-1700	
Fax	Remarks ACTVT MIRL, ODALS RWYS 17, 35 AND REIL - CTAF 122.7.	
E-mail betty.baker@orangeburg.sc.us	VASI RWY 05 AND PAPI RWYS 17 & 35 OPER CONT.	
FBO Phone/Fax	After hrs access directions posted on door.	
Orangeburg Municipal Airport	SELF SERVICE 100LL	
(803) 928-1545	TERMINAL CLOSED SAT-SUN	

PYG - PAGELAND
 CHARLOTTE SECTIONAL
 12/26/2024

PAGELAND - 53

Latitude: 34° 44' 31.7000" N
Longitude: 80° 20' 42.7000" W



Elevation - 574' MSL

Mag Var - 08° W

Runway					Edge	Approach	Traffic
ID	Length	Width	Surface	VGSI	REILS	Lights	Pattern
06/24	3396'	60'	ASPH	06/24	06/24	MED	Standard

Runway Pavement Strength					Navigation			
Runway	SW	DW	DTW	DDTW	IDENT	Type	FREQ	Direct/Dist
06/24	12.5				CTF	VOR/DME	114.55	r331° 6.5 NM to fld

Communications				ATC		AWOS/ASOS	
Unicom	CTAF	GCO	RCO	FREQ	FAA ID	FREQ	Phone
	122.900			120.05	CLT		

Manager	Shane M. Sligh	Storage	TIE	Repairs	N
GPS	99 State Road S-13-753	Landing Fee	N	Oxygen	N
Address	Pageland, SC 29728	Lighting Sched	SS-SR	Fuel Type	100LL
Phone	(843) 672-3068	Att Schedule	UNATTENDED		
Fax	(843) 672-5635	Remarks	ACTVT MIRL, REIL - CTAF Gate access use CTAF freq. SELF SERVICE 100LL		
E-mail	ssligh@shtc.net				
FBO Phone/Fax					

6JØ - LEXINGTON COUNTY
 CHARLOTTE SECTIONAL
 12/26/2024

PELION - 54

Latitude: 33° 47' 40.7000" N
 Longitude: 81° 14' 45.1000" W



Elevation - 451' MSL

Mag Var - 07° W

Runway					Edge	Approach	Traffic
ID	Length	Width	Surface	VGSI	REILS	Lights	Pattern
18/36	4335'	75'	CONC	36		MED	Standard

Runway Pavement Strength					Navigation			
Runway	SW	DW	DTW	DDTW	IDENT	Type	FREQ	Direct/Dist
18/36	12.5				CAE	VORTAC	114.70	r251° 10.3 NM to fld

Communications				ATC		AWOS/ASOS	
Unicom	CTAF	GCO	RCO	FREQ	FAA ID	FREQ	Phone
123.000	123.000			124.15	CAE		

Manager Tim Shumpert	Storage TIE	Repairs N
GPS 106 Airport Rd	Landing Fee N	Oxygen N
Address Pelion, SC 29123	Lighting Sched SEE RMK	Fuel Type 100LL
Phone (803) 600-9313		
Fax	Att Schedule UNATTENDED	
E-mail tshumpert@lexingtoncounty.sc.gov	Remarks	After hours access use Unicom followed by #
FBO Phone/Fax		ACTVT MIRL - CTAF
		SELF SERVICE 100LL
		4 CLICKS ON CTAF FOR WX
		3 CLICKS ON CTAF FOR WIND
		WX NOT IFR APPROVED-ADVISORY ONLY

LQK - PICKENS COUNTY

ATLANTA SECTIONAL
12/26/2024

PICKENS - 55

Latitude: 34° 48' 35.9000" N
Longitude: 82° 42' 10.4000" W



Elevation - 1013' MSL

Mag Var - 06° W

Runway					Edge	Approach	Traffic
ID	Length	Width	Surface	VGSI	REILS	Lights	Pattern
05/23	5002'	100'	ASPH	05/23		MED	Standard

Runway Pavement Strength					Navigation			
Runway	SW	DW	DTW	DDTW	IDENT	Type	FREQ	Direct/Dist
05/23	75.0	101.0			ELW	VORTAC	108.60	r10° 23.8 NM to fld

Communications				ATC		AWOS/ASOS	
Unicom	CTAF	GCO	RCO	FREQ	FAA ID	FREQ	Phone
122.800	122.800			118.8	GSP	120.000	(864) 843-5801

Manager Carlos Salinas

GPS 240 Airport Rd

Address Liberty, SC 29657

Phone (864) 843-5803

Fax

E-mail csalinas@co.pickens.sc.us

FBO Phone/Fax

Pickens County Aviation
(864) 843-5803

Storage HGR,TIE

Landing Fee N

Lighting Sched SEE RMK

Att Schedule Daily 0800-1700

Remarks Noise Abatement Procedures In Effect
ACTVT MIRL - CTAF.
After hours access use Unicom freq
SELF SERVICE 100LL

Repairs Y

Oxygen N

Fuel Type 100LL, JET A

3J1 - RIDGELAND-CLAUDE DEAN

CHARLOTTE SECTIONAL
12/26/2024

RIDGELAND - 56

Latitude: 32° 29' 48.6620" N
Longitude: 80° 59' 35.3360" W



Elevation - 84' MSL

Mag Var - 07° W

Runway					Edge		Approach	Traffic
ID	Length	Width	Surface	VGSI	REILS	Lights	Lights	Pattern
18/36	4200'	75'	ASPH	18/36	18/36	MED		Standard

Runway Pavement Strength					Navigation			
Runway	SW	DW	DTW	DDTW	IDENT	Type	FREQ	Direct/Dist
18/36	30.0	45.0			SAV	VORTAC	115.95	r033° 23.3 NM to fld

Communications				ATC		AWOS/ASOS	
Unicom	CTAF	GCO	RCO	FREQ	FAA ID	FREQ	Phone
123.075	123.075			123.7	NBC	118.450	(843) 547-8419

Manager Danny Lucas
GPS 1765 Grays Highway
Address Ridgeland, SC 29936
Phone (843) 929-4159
Fax
E-mail dlucas@jaspercountysc.gov

FBO Phone/Fax
SkyBlue Aviation
(843) 547-8380

Storage TIE
Landing Fee N
Lighting Sched SEE RMK
Repairs Y
Oxygen N
Fuel Type 100LL, JET A

Att Schedule Daily 0800-1800
Remarks LTG PRESET LOW INTST ACTVT MIRL-CTAF
PAPI, REILS RWYS 18-36
FULL SERVICE JET-A, 100LL
SELF SERVICE JET-A, 100LL
Ramp Alpha ramp fee waived with fuel purchase
After - Hours FBO Service Requires Prior
Permission (843) 547-8380 (843) 929-4159

UZA - ROCK HILL/YORK CO/BRYANT FIELD
 CHARLOTTE SECTIONAL
 12/26/2024

ROCK HILL - 57

Latitude: 34° 59' 16.2000" N
Longitude: 81° 03' 25.8000" W



Elevation - 666' MSL

Mag Var - 08° W

Runway					Edge	Approach	Traffic
ID	Length	Width	Surface	VGSI	REILS	Lights	Pattern
02/20	5500'	100'	ASPH	02/20		MED	02 Standard

Runway Pavement Strength					Navigation			
Runway	SW	DW	DTW	DDTW	IDENT	Type	FREQ	Direct/Dist
02/20	78.0	104.0			CLT	VORTAC	115.00	r208° 13.2 NM to fld

Communications				ATC		AWOS/ASOS	
Unicom	CTAF	GCO	RCO	FREQ	FAA ID	FREQ	Phone
123.050	123.050	121.725		120.05	CLT	120.775	(803) 981-9388

Manager Steven Gould	Storage HGR,TIE	Repairs Y
GPS 550 Airport Rd	Landing Fee N	Oxygen Y
Address Rock Hill, SC 29732	Lighting Sched SEE RMK	Fuel Type 100LL, JET A
Phone (803) 329-5560	Att Schedule M-F 0700-2000 / S-S 0800-2000	
Fax	Remarks MIRL, MALSR RWY 02 PRESET MED	
E-mail steven.gould@cityofrockhill.com		
FBO Phone/Fax		
Skytech, Inc.		
(803) 366-5108		
		INTST DUSK-2300; TO INCR INTST OR ACTVT AFTER 2300 - CTAF.
		For after hours access follow directions posted on signs at the airfield.
		SELF SERVICE 100LL

6J4 - SALUDA COUNTY
 CHARLOTTE SECTIONAL
 12/26/2024

SALUDA - 58

Latitude: 33° 55' 36.4550" N
Longitude: 81° 47' 40.6600" W



Elevation - 539' MSL

Mag Var - 07° W

Runway					Edge	Approach	Traffic
ID	Length	Width	Surface	VGSI	REILS	Lights	Pattern
01/19	3189'	60'	ASPH	01/19		MED	Standard

Runway Pavement Strength				
Runway	SW	DW	DTW	DDTW
01/19	11.3			

Communications				ATC		AWOS/ASOS	
Unicom	CTAF	GCO	RCO	FREQ	FAA ID	FREQ	Phone
							122.900

Manager Jill Warren
GPS 180 Saluda Airport Rd
Address Saluda, SC 29138
Phone (864) 407-8018
Fax (864) 445-3913
E-mail j.warren@saludacounty.sc.gov

Storage HGR,TIE
Landing Fee N
Lighting Sched SEE RMK
Repairs Y
Oxygen N
Fuel Type 100LL

FBO Phone/Fax
 Leading Edge Aviation
 (218) 686-7746

Att Schedule M-F 0800-1700 SAT 0800-1200
Remarks ACTVT MIRL & PAPI RY 19 - CTAF.
 AIRFIELD ROAD ACCESS BY PRIOR
 ARRANGEMENT
 SELF SERVICE 100LL
 4 CLICKS ON CTAF FOR WX
 3 CLICKS ON CTAF FOR WIND
 WX NOT IFR APPROVED-ADVISORY ONLY
<https://www.wunderground.com/dashboard/pws/KSCSALUD20>

SPA - SPARTANBURG DOWNTOWN MEMORIAL/SIMPSON

SPARTANBURG - 59

CHARLOTTE SECTIONAL
12/26/2024

Latitude: 34° 54' 59.1000" N
Longitude: 81° 57' 20.8000" W



Elevation - 802' MSL

Mag Var - 07° W

Runway					Edge	Approach	Traffic	
ID	Length	Width	Surface	VGSI	REILS	Lights	Lights	Pattern
05/23	5852'	100'	ASPH	05/23	23	HIGH	05	Standard

Runway Pavement Strength					Navigation			
Runway	SW	DW	DTW	DDTW	IDENT	Type	FREQ	Direct/Dist
05/23	95.0	131.0			SPA	VORTAC	115.70	r194° 7.2 NM to fld

Communications				ATC		AWOS/ASOS	
Unicom	CTAF	GCO	RCO	FREQ	FAA ID	FREQ	Phone
123.000	123.000		120.55	119.4	GSP	133.925	(864) 587-2529

Manager Terry Connorton	Storage HGR,TIE	Repairs Y
GPS 500 Ammons Rd	Landing Fee N	Oxygen N
Address Spartanburg, SC 29306	Lighting Sched SEE RMK	Fuel Type 100LL, JET A
Phone (864) 580-5004	Att Schedule Daily 0700-1900	
Fax (864) 574-8558	Remarks ACTVT HIRL, MALSR RWY 05 - CTAF. For fuel after hrs. (864) 574-8552 SELF SERVICE 100LL	
E-mail tconnorton@cityofspartanburg.org		
FBO Phone/Fax City of Spartanburg (864) 574-8552		

6J2 - ST GEORGE
 CHARLOTTE SECTIONAL
 12/26/2024

ST GEORGE - 60
Latitude: 33° 11' 43.8000" N
Longitude: 80° 30' 30.5000" W



Elevation - 84' MSL

Mag Var - 08° W

Runway					Edge	Approach	Traffic
ID	Length	Width	Surface	VGSI	REILS	Lights	Pattern
05/23	3201'	60'	ASPH			LOW	Standard

Runway Pavement Strength					Navigation			
Runway	SW	DW	DTW	DDTW	IDENT	Type	FREQ	Direct/Dist
05/23	21.0	30.0			VAN	VORTAC	110.40	r196° 17.0 NM to fld

Communications				ATC		AWOS/ASOS	
Unicom	CTAF	GCO	RCO	FREQ	FAA ID	FREQ	Phone
122.800	122.800			120.7	CHS		

Manager Don Hay	Storage TIE	Repairs N
GPS 152 Airport Rd	Landing Fee N	Oxygen N
Address St. George, SC 29477	Lighting Sched SS-SR	Fuel Type N
Phone (843) 412-1999	Att Schedule UNATTENDED	
Fax (843) 461-7500	Remarks ACTVT LIRL - CTAF 122.8	
E-mail Certified_flight@msn.com	GATE ACCESS *1941	
FBO Phone/Fax		

DYB - SUMMERVILLE
 CHARLOTTE SECTIONAL
 12/26/2024

SUMMERVILLE - 61

Latitude: 33° 03' 44.2000" N
Longitude: 80° 16' 51.3000" W



Elevation - 56' MSL

Mag Var - 08° W

Runway					Edge	Approach	Traffic
ID	Length	Width	Surface	VGSI	REILS	Lights	Pattern
06/24	5000'	75'	ASPH			MED	06 - RH

Runway Pavement Strength					Navigation			
Runway	SW	DW	DTW	DDTW	IDENT	Type	FREQ	Direct/Dist
06/24	19.5	31.0			CHS DYB	VORTAC NDB	113.50 365	r315° 15.8 NM to fld at fld

Communications				ATC		AWOS/ASOS	
Unicom	CTAF	GCO	RCO	FREQ	FAA ID	FREQ	Phone
123.000	123.000			120.7	CHS	119.575	(843) 821-8403

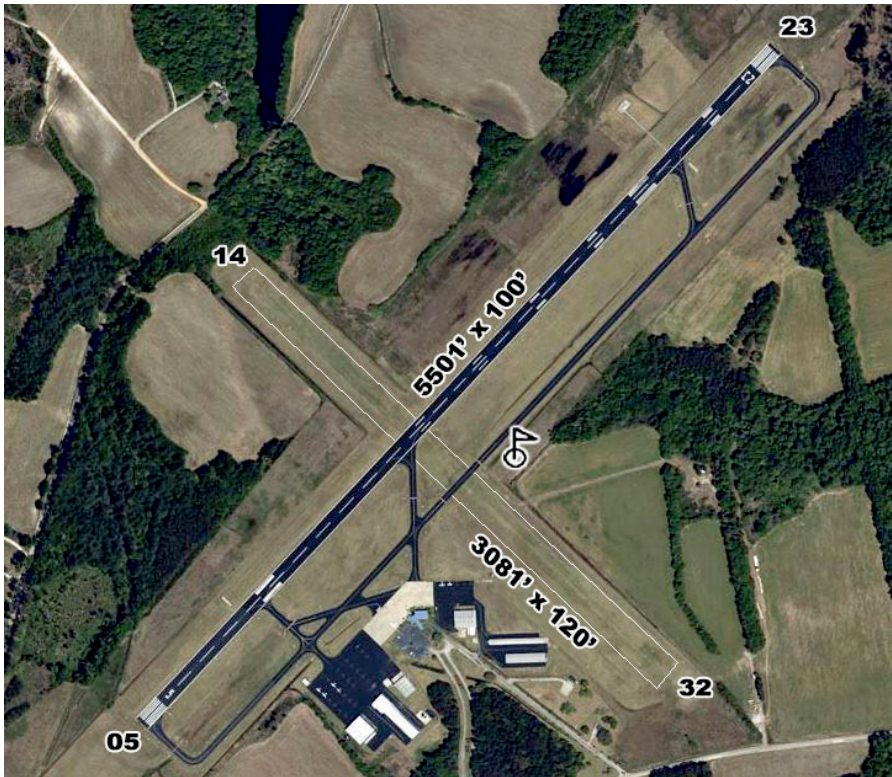
Manager Don Hay	Storage TIE	Repairs Y
GPS 890 Greyback Rd	Landing Fee	Oxygen N
Address Summerville, SC 29483	Lighting Sched SEE RMK	Fuel Type 100LL, JET A
Phone (843) 412-1999	Att Schedule Daily 0800-1900	
Fax (843) 462-7500	Remarks MIRL OPER DUSK-2200; AFTER 2200 ACTVT - CTAF.	
E-mail certified_flight@msn.com		
FBO Phone/Fax Pelican Aviation, Inc. (843) 851-0970 (843) 851-0971		

SMS - SUMTER

CHARLOTTE SECTIONAL
12/26/2024

SUMTER - 62

Latitude: 33° 59' 42.0920" N
Longitude: 80° 21' 40.7840" W



Elevation - 182' MSL

Mag Var - 08° W

Runway					Edge	Approach	Traffic
ID	Length	Width	Surface	VGSI	REILS	Lights	Pattern
05/23	5501'	100'	ASPH	05/23	05/23	MED	23 - RH
14/32	3081'	120'	TURF				32 - RH

Runway Pavement Strength					Navigation			
Runway	SW	DW	DTW	DDTW	IDENT	Type	FREQ	Direct/Dist
05/23	31.5	42.5			SMS	NDB	252	at fld
14/32					VAN	VORTAC	110.40	r014° 31.5 NM to fld

Communications				ATC		AWOS/ASOS	
Unicom	CTAF	GCO	RCO	FREQ	FAA ID	FREQ	Phone
122.700	122.700			125.4	SSC	118.075	(803) 469-6750

Manager Jeff Knauer
GPS 2945 Airport Rd
Address Sumter, SC 29153
Phone (803) 469-4639
Fax (803) 469-6276
E-mail oewings@ftc-i.net
FBO Phone/Fax

Storage HGR,TIE
Repairs Y
Landing Fee N
Oxygen N
Lighting Sched SEE RMK
Fuel Type 100LL, JET A
Att Schedule Daily 0800-1700
Remarks ACTVT MIRL, REILs RWY 5/23 - CTAF.
PAPIs CONTINUOUS OPS
Ramp Access use Unicom freq.
For fuel after hrs. (803) 565-9978
SELF SERVICE 100LL

58J - HUGGINS MEMORIAL
 CHARLOTTE SECTIONAL
 12/26/2024

TIMMONSVILLE - 63

Latitude: 34° 08' 08.0700" N
Longitude: 79° 55' 17.0800" W



Elevation - 143' MSL

Mag Var - 08° W

Runway					Edge	Approach	Traffic
ID	Length	Width	Surface	VGSI	REILS	Lights	Pattern
14/32	3090'	150'	TURF			LOW	Standard

Runway Pavement Strength					Navigation			
Runway	SW	DW	DTW	DDTW	IDENT	Type	FREQ	Direct/Dist
14/32					FLO	VORTAC	115.20	r249° 14.4 NM to fld

Communications				ATC		AWOS/ASOS	
Unicom	CTAF	GCO	RCO	FREQ	FAA ID	FREQ	Phone
	122.900						

Manager Bettie Huggins	Storage HGR,TIE	Repairs N
GPS 550 Runway Dr	Landing Fee N	Oxygen N
Address Timmonsville, SC 29161	Lighting Sched SEE RMK	Fuel Type N
Phone (843) 346-3734		
Fax	Att Schedule UNATTENDED	
E-mail bettiehuggins@aol.com	Remarks ACTVT LIRL - CTAF.	
FBO Phone/Fax	Private Airport - Public Use	

6J6 - EDGEFIELD COUNTY
 CHARLOTTE SECTIONAL
 12/26/2024

TRENTON - 64

Latitude: 33° 44' 12.7000" N
 Longitude: 81° 49' 07.5000" W



Elevation - 611' MSL

Mag Var - 07° W

Runway				Edge		Approach	Traffic
ID	Length	Width	Surface	VGSI	REILS	Lights	Pattern
11/29	2640'	85'	TURF				Standard
15/33	1584'	56'	TURF				Standard

Runway Pavement Strength					Navigation			
Runway	SW	DW	DTW	DDTW	IDENT	Type	FREQ	Direct/Dist
11/29					IRQ	VORTAC	113.90	r088° 17.2 NM to fld
15/33								

Communications				ATC		AWOS/ASOS	
Unicom	CTAF	GCO	RCO	FREQ	FAA ID	FREQ	Phone
							122.900

Manager Tyler Flom	Storage TIE	Repairs N
GPS 18 Girl Scout Camp Rd	Landing Fee N	Oxygen N
Address Trenton, SC 29847	Lighting Sched	Fuel Type N
Phone (218) 686-7746	Att Schedule UNATTENDED (218) 686-7746	
Fax	Remarks Caution - radio control aircraft activity	
E-mail edgefieldaviationsc@gmail.com		
FBO Phone/Fax		

35A - UNION COUNTY, TROY SHELTON FLD

ATLANTA SECTIONAL
12/26/2024

UNION - 65

Latitude: 34° 41' 13.0300" N
Longitude: 81° 38' 28.2000" W



Elevation - 610' MSL

Mag Var - 06° W

Runway					Edge	Approach	Traffic
ID	Length	Width	Surface	VGSI	REILS	Lights	Pattern
05/23	3508'	60'	ASPH	05/23		MED	Standard

Runway Pavement Strength					Navigation			
Runway	SW	DW	DTW	DDTW	IDENT	Type	FREQ	Direct/Dist
05/23	12.5				UOT	NDB	326	at fld

Communications				ATC		AWOS/ASOS	
Unicom	CTAF	GCO	RCO	FREQ	FAA ID	FREQ	Phone
122.700	122.700			119.4	GSP	119.450	(864) 427-1514

Manager Ronnie Wade	Storage HGR,TIE	Repairs Y
GPS 198 Airport Rd	Landing Fee N	Oxygen N
Address Union, SC 29379	Lighting Sched SEE RMK	Fuel Type 100LL
Phone (864) 429-1680	Att Schedule MON-FRI 0800-1700	
Fax (864) 429-1681	Remarks MIRL AFTER 0000 - CTAF	
E-mail rwade@countyofunion.com	SELF SERVICE 100LL	
FBO Phone/Fax		

RBW - LOWCOUNTRY RGNL

CHARLOTTE SECTIONAL
12/26/2024

WALTERBORO - 66

Latitude: 32° 55' 15.7460" N
Longitude: 80° 38' 26.1230" W



Elevation - 101' MSL

Mag Var - 07° W

Runway					Edge		Approach	Traffic
ID	Length	Width	Surface	VGSI	REILS	Lights	Lights	Pattern
05/23	6002'	100'	ASPH-CONC	05/23	23	MED	23	Standard
17/35	5705'	100'	ASPH-CONC					Standard

Runway Pavement Strength					Navigation			
Runway	SW	DW	DTW	DDTW	IDENT	Type	FREQ	Direct/Dist
05/23	70.0	101.0			CHS	VORTAC	113.50	r278° 30.5 NM to fld
17/35	33.5	50.5						

Communications				ATC		AWOS/ASOS	
Unicom	CTAF	GCO	RCO	FREQ	FAA ID	FREQ	Phone
122.800	122.800			120.7	CHS	118.725	(843) 538-3575

Manager Bert Duffie	Storage HGR,TIE	Repairs Y
GPS 537 Aviation Way	Landing Fee N	Oxygen N
Address Walterboro, SC 29488	Lighting Sched SEE RMK	Fuel Type 100LL, JET A
Phone (843) 549-2549	Att Schedule Daily 0800-1800	
Fax (843) 549-1444	Remarks MIRL DUSK UNTIL 2200	
E-mail airport@colletoncounty.org	AFTER 2200 PCL CTAF	
	PAPI RWY 5&23. ODALS RWY 23.	
	SELF SERVICE 100LL	

FBO Phone/Fax
 Lowcountry Regional Airport
 (843) 549-2549 (843) 549-1444
 Swamp Fox Avionics (843) 782-4006
 Ace Basin Aviation (843) 893-6968
 Lowcountry Aviation (855) 435-9522

FDW - FAIRFIELD COUNTY
 CHARLOTTE SECTIONAL
 12/26/2024

WINNSBORO - 67

Latitude: 34° 18' 56.6000" N
Longitude: 81° 06' 30.8000" W



Elevation - 578' MSL

Mag Var - 07° W

Runway					Edge	Approach	Traffic
ID	Length	Width	Surface	VGSI	REILS	Lights	Pattern
04/22	5243'	100'	ASPH	04/22		MED	Standard

Runway Pavement Strength					Navigation			
Runway	SW	DW	DTW	DDTW	IDENT	Type	FREQ	Direct/Dist
04/22	42.0	60.0			CAE	VORTAC	114.70	r356° 27.6 NM to fld

Communications				ATC		AWOS/ASOS	
Unicom	CTAF	GCO	RCO	FREQ	FAA ID	FREQ	Phone
123.050	123.050			133.4	CAE	119.075	(803) 712-2577

Manager Denise Bryan	Storage TIE	Repairs Y
GPS 1291 Runway Rd	Landing Fee N	Oxygen N
Address Winnsboro, SC 29180	Lighting Sched SEE RMK	Fuel Type 100LL, JET A
Phone (803) 635-1058		
Fax (803) 815-1495	Att Schedule Daily 0800-1700 EST / 0800-1800 DST	
E-mail denise.bryan@fairfield.sc.gov	Remarks MIRL PRESET LOW INTST, ACTVT MIRL & VGSI - CTAF	
FBO Phone/Fax	RAMP ACCESS OR	
S&S Aviation	FUEL AFTR HRS (803) 315-3048	
(803) 635-3086	RWY 4 DSPLCD TH 239'	
	SELF SERVICE 100LL	



Online Flight Planning
WWW.1800WXBRIEF.COM

Specialist Services
1-800-WX-BRIEF

When requesting a briefing from a Flight Service Specialist, please provide the following required background information:

- ACID or Pilot Last Name
- Aircraft Type
- Departure Airport
- Proposed Departure Time
- Altitude
- Destination Airport
- Estimated Time Enroute

Radio Services
Inflight: 24/7

- VFR Flight Plan activations, closures, and updates
- PIREPs, clearances, and position reports
- Weather and NOTAM updates
- Lost Aircraft assistance and emergency services

**Access Online Flight Planning
and More**

WWW.1800WXBRIEF.COM

or scan this QR code:



ICAO Flight Plan Form

- Aircraft Identification
- Flight Rule
- Flight Type
- Aircraft Type
- Wake Turbulence
- Aircraft Equipment
- Surveillance Equipment
- Departure
- Departure Date & Time
- Cruising Speed
- Level
- Route of Flight
- Destination
- Estimated Elapsed Time
- Alternate(s)
- Other Information
- Supplemental Information

Better Briefings, Safer Flights

The FAA's only authorized full-service Flight Service provider with online, phone, and radio services



SOUTH CAROLINA AERONAUTICS

2553 Airport Boulevard
West Columbia, South Carolina 29170
(803) 896-6262

aeronautics.sc.gov

