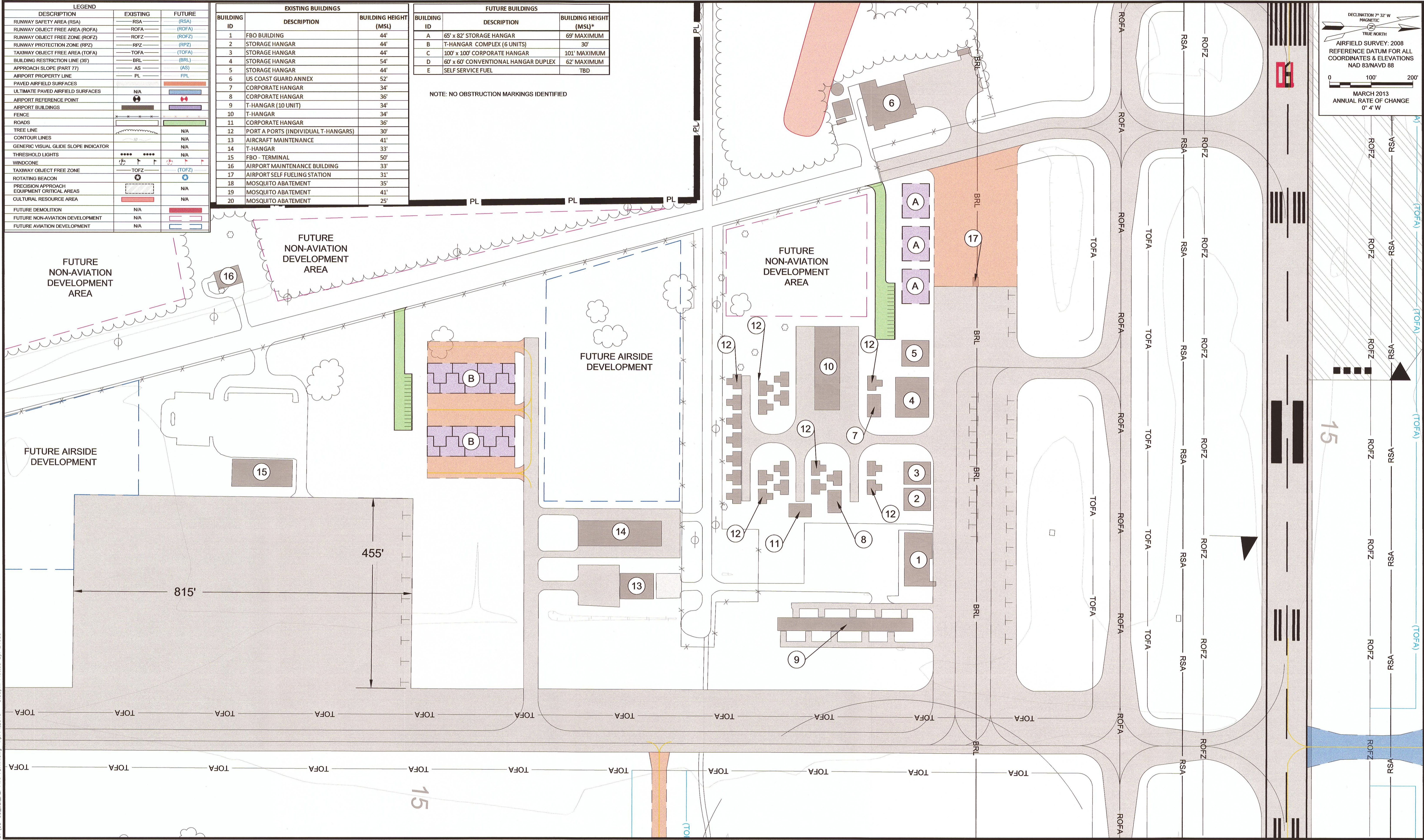


LEGEND	EXISTING	FUTURE
RUNWAY SAFETY AREA (RSA)	RSA	(RSA)
RUNWAY OBJECT FREE AREA (ROFA)	ROFA	(ROFA)
RUNWAY PROTECTION ZONE (RPZ)	RPZ	(RPZ)
TAXIWAY OBJECT FREE AREA (TOFA)	TOFA	(TOFA)
BUILDING RESTRICTION LINE (BRL)	BRL	(BRL)
APPROACH SLOPE (PART 77)	AS	(AS)
AIRPORT PROPERTY LINE	PL	FPL
PAVED AIRFIELD SURFACES		
ULTIMATE PAVED AIRFIELD SURFACES	NIA	
AIRPORT REFERENCE POINT		
AIRPORT BUILDINGS		
FENCE		
ROADS		
TREE LINE		NIA
CONTOUR LINES		NIA
GENERIC VISUAL GLIDE SLOPE INDICATOR		NIA
THRESHOLD LIGHTS	••••	••••
WINDCONE		
TAXIWAY OBJECT FREE ZONE	TOFZ	(TOFZ)
ROTATING BEACON		
PRECISION APPROACH EQUIPMENT CRITICAL AREAS		NIA
CULTURAL RESOURCE AREA		NIA
FUTURE DEMOLITION	NIA	
FUTURE NON-AVIATION DEVELOPMENT	NIA	
FUTURE AVIATION DEVELOPMENT	NIA	

EXISTING BUILDINGS		
BUILDING ID	DESCRIPTION	BUILDING HEIGHT (MSL)
1	FBO BUILDING	44'
2	STORAGE HANGAR	44'
3	STORAGE HANGAR	44'
4	STORAGE HANGAR	54'
5	STORAGE HANGAR	44'
6	US COAST GUARD ANNEX	52'
7	CORPORATE HANGAR	34'
8	CORPORATE HANGAR	36'
9	T-HANGAR (10 UNIT)	34'
10	T-HANGAR	34'
11	CORPORATE HANGAR	36'
12	PORT A PORTS (INDIVIDUAL T-HANGARS)	30'
13	AIRCRAFT MAINTENANCE	41'
14	T-HANGAR	33'
15	FBO - TERMINAL	50'
16	AIRPORT MAINTENANCE BUILDING	33'
17	AIRPORT SELF FUELING STATION	31'
18	MOSQUITO ABATEMENT	35'
19	MOSQUITO ABATEMENT	41'
20	MOSQUITO ABATEMENT	25'

FUTURE BUILDINGS		
BUILDING ID	DESCRIPTION	BUILDING HEIGHT (MSL)*
A	65' x 82' STORAGE HANGAR	69' MAXIMUM
B	T-HANGAR COMPLEX (6 UNITS)	30'
C	100' x 100' CORPORATE HANGAR	101' MAXIMUM
D	60' x 60' CONVENTIONAL HANGAR DUPLEX	62' MAXIMUM
E	SELF SERVICE FUEL	TBD

NOTE: NO OBSTRUCTION MARKINGS IDENTIFIED



DECLINATION 7° 32' W
MAGNETIC
TRUE NORTH

AIRFIELD SURVEY: 2008
REFERENCE DATUM FOR ALL
COORDINATES & ELEVATIONS
NAD 83/NAVD 88

0 100' 200'

MARCH 2013
ANNUAL RATE OF CHANGE
0° 4' W

REVISIONS	
DATE	DESCRIPTION

CLIENT



PROJECT

CHARLESTON EXECUTIVE AIRPORT
CHARLESTON, SOUTH CAROLINA
AIRPORT LAYOUT PLAN

SHEET TITLE

TERMINAL AREA PLAN A
EXISTING TERMINAL AREA

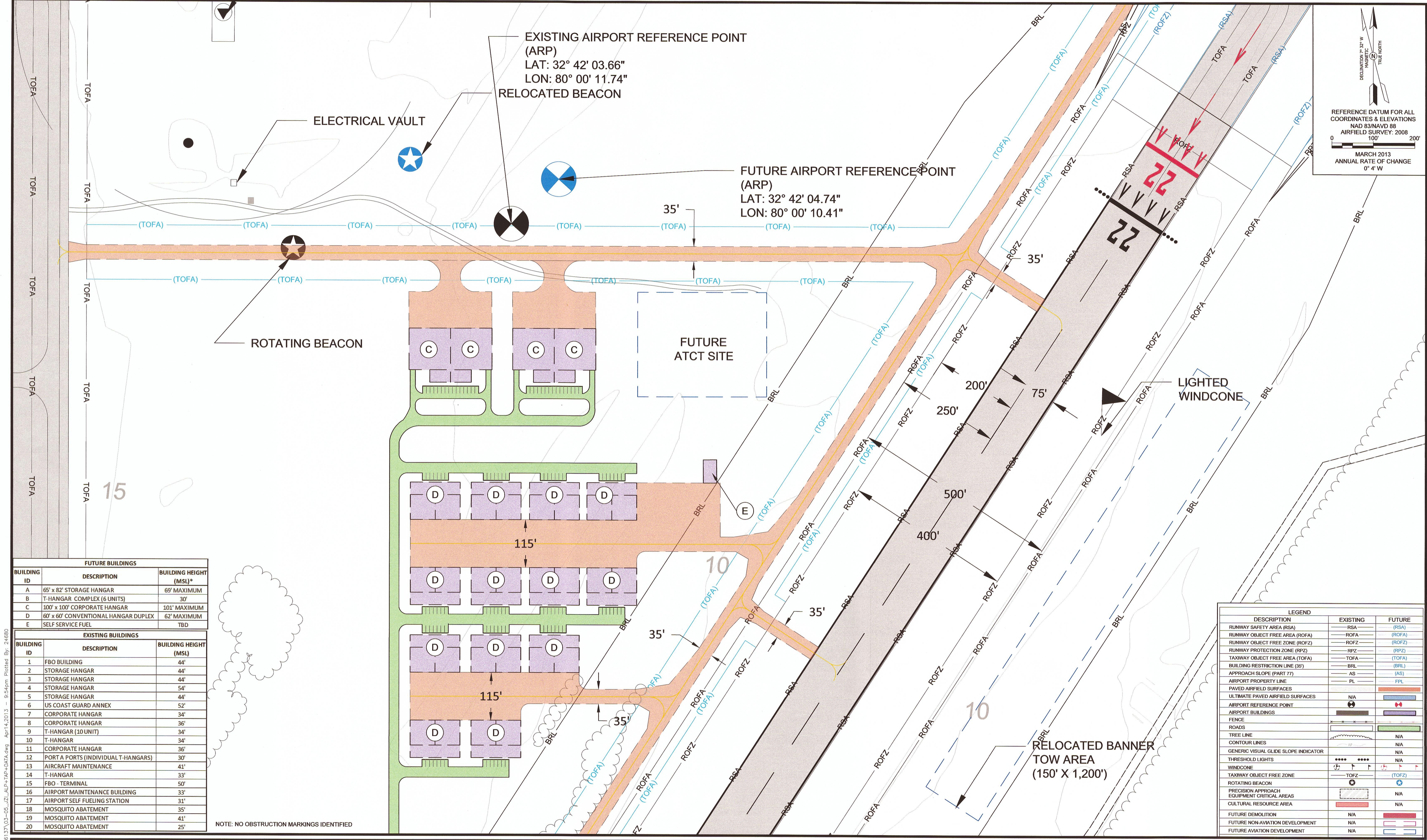


482 South Keller Road | Tel. (407) 647-7275
Orlando, Florida 32810 | Fax (407) 806-4500
www.atkinsglobal.com/northamerica

JOB NO.: 063028502
DRAWN: AMM
DESIGN: AMM
CHECKED: JDH
DATE: APRIL 2013

SHEET 5 OF 13

C:\pwworkspace\124680\124680.dwg Apr 14, 2013 9:53am Plotted By: 24680



DELINEATION 7.32' W
 MAGNETIC
 TRUE NORTH
 REFERENCE DATUM FOR ALL
 COORDINATES & ELEVATIONS
 NAD 83/NAVD 88
 AIRFIELD SURVEY: 2008
 0 100' 200'
 MARCH 2013
 ANNUAL RATE OF CHANGE
 0" 4' W

FUTURE BUILDINGS		
BUILDING ID	DESCRIPTION	BUILDING HEIGHT (MSL)*
A	65' x 82' STORAGE HANGAR	69' MAXIMUM
B	T-HANGAR COMPLEX (6 UNITS)	30'
C	100' x 100' CORPORATE HANGAR	101' MAXIMUM
D	60' x 60' CONVENTIONAL HANGAR DUPLEX	62' MAXIMUM
E	SELF SERVICE FUEL	TBD

EXISTING BUILDINGS		
BUILDING ID	DESCRIPTION	BUILDING HEIGHT (MSL)
1	FBO BUILDING	44'
2	STORAGE HANGAR	44'
3	STORAGE HANGAR	44'
4	STORAGE HANGAR	54'
5	STORAGE HANGAR	44'
6	US COAST GUARD ANNEX	52'
7	CORPORATE HANGAR	34'
8	CORPORATE HANGAR	36'
9	T-HANGAR (10 UNIT)	34'
10	T-HANGAR	34'
11	CORPORATE HANGAR	36'
12	PORT A PORTS (INDIVIDUAL T-HANGARS)	30'
13	AIRCRAFT MAINTENANCE	41'
14	T-HANGAR	33'
15	FBO - TERMINAL	50'
16	AIRPORT MAINTENANCE BUILDING	33'
17	AIRPORT SELF FUELING STATION	31'
18	MOSQUITO ABATEMENT	35'
19	MOSQUITO ABATEMENT	41'
20	MOSQUITO ABATEMENT	25'

NOTE: NO OBSTRUCTION MARKINGS IDENTIFIED

DESCRIPTION	EXISTING	FUTURE
RUNWAY SAFETY AREA (RSA)	— RSA	— (RSA)
RUNWAY OBJECT FREE AREA (ROFA)	— ROFA	— (ROFA)
RUNWAY OBJECT FREE ZONE (ROFZ)	— ROFZ	— (ROFZ)
RUNWAY PROTECTION ZONE (RPZ)	— RPZ	— (RPZ)
TAXIWAY OBJECT FREE AREA (TOFA)	— TOFA	— (TOFA)
BUILDING RESTRICTION LINE (BRL)	— BRL	— (BRL)
AIRPORT PROPERTY LINE	— PL	— (PL)
PAVED AIRFIELD SURFACES	—	—
ULTIMATE PAVED AIRFIELD SURFACES	N/A	—
AIRPORT REFERENCE POINT	—	—
AIRPORT BUILDINGS	—	—
FENCE	—	—
ROADS	—	—
TREE LINE	—	N/A
CONTOUR LINES	—	N/A
GENERIC VISUAL GLIDE SLOPE INDICATOR	—	N/A
THRESHOLD LIGHTS	—	N/A
WINDCONE	—	—
TAXIWAY OBJECT FREE ZONE	— TOFZ	— (TOFZ)
ROTATING BEACON	—	—
PRECISION APPROACH EQUIPMENT CRITICAL AREAS	—	N/A
CULTURAL RESOURCE AREA	—	N/A
FUTURE DEMOLITION	N/A	—
FUTURE NON-AVIATION DEVELOPMENT	N/A	—
FUTURE AVIATION DEVELOPMENT	N/A	—

C:\pwworkspace\124680\dms6137\03-05_ZJ_ALP+JEP+DATA.dwg Apr 14, 2013 9:54pm Plotted By: 24680

REVISIONS	
DATE	DESCRIPTION

CLIENT



PROJECT

CHARLESTON EXECUTIVE AIRPORT
 CHARLESTON, SOUTH CAROLINA
 AIRPORT LAYOUT PLAN

SHEET TITLE

TERMINAL AREA PLAN B
 MIDFIELD



482 South Keller Road | Tel. (407) 647-7275
 Orlando, Florida 32810 | Fax (407) 806-4500
 www.atkinsglobal.com/northamerica

JOB NO.: 063028502
 DRAWN: AMM
 DESIGN: AMM
 CHECKED: JDH
 DATE: APRIL 2013

SHEET 6 OF 13