

ALL WEATHER WIND ROSE

SOURCE:
NATIONAL WEATHER RECORDS CENTER
ASHEVILLE, NORTH CAROLINA
FOR FLORENCE MUNICIPAL AIRPORT
REPORTING PERIOD FROM JAN.1960 THRU DEC.1964

WIND COVERAGE:
12 MPH / 10.5 KNT = 94.7%
15 MPH / 13 KNT = 97.2%

BUILDINGS

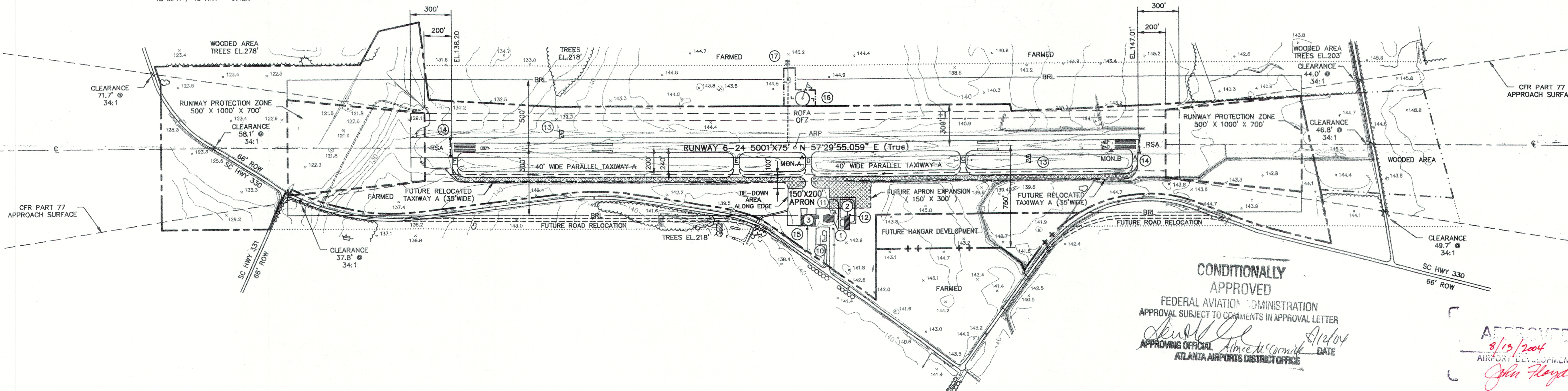
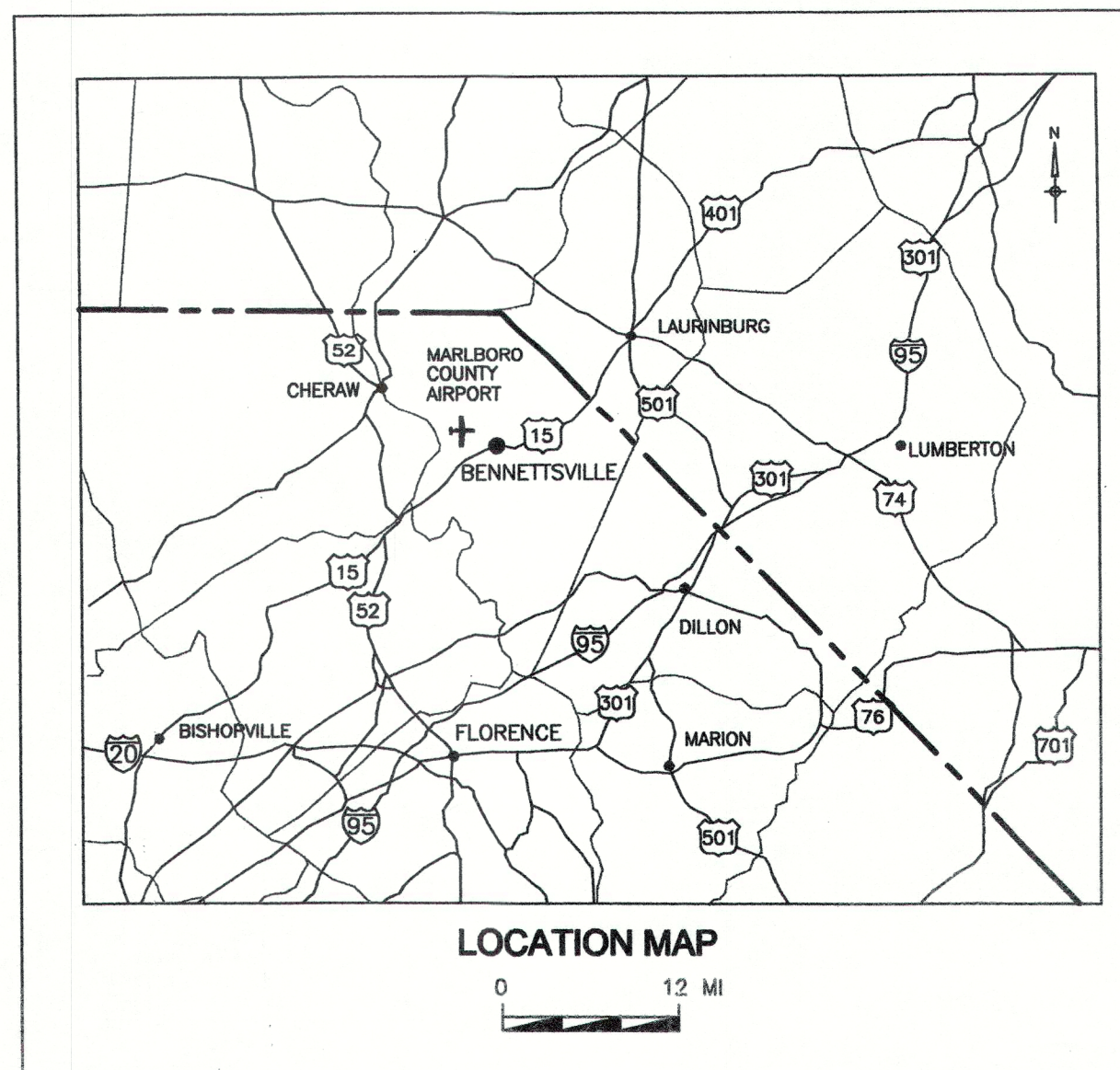
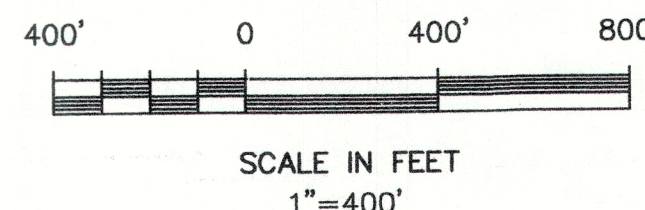
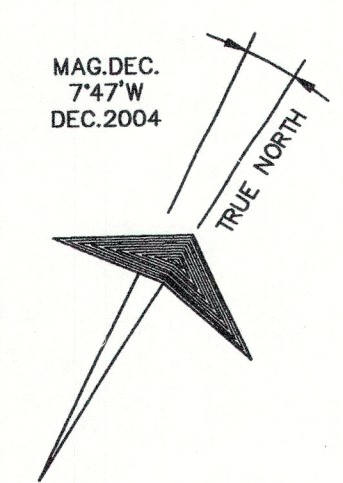
- ① TERMINAL
- ② T-HANGAR
- ③ MAINTENANCE HANGAR

FACILITIES

- ⑩ AUTO PARKING
- ⑪ FUEL FARM
- ⑫ AIRPORT BEACON
- ⑬ PRECISION APPROACH PATH INDICATOR (PAPI)
- ⑭ RUNWAY END IDENTIFIER LIGHTS (REIL)
- ⑮ NON-DIRECTIONAL BEACON (NDB)
- ⑯ SEGMENTED CIRCLE / LIGHTED WIND CONE
- ⑰ AUTOMATED WEATHER OBSERVING SYSTEM (AWOS III PT)

NOTES

1. BASE MAP PROVIDED BY SOUTH CAROLINA DEPARTMENT OF COMMERCE DIVISION OF AERONAUTICS. UPDATED BY TALBERT AND BRIGHT PER SUBSEQUENT DEVELOPMENT.
2. FUTURE DEVELOPMENT SHOWN WAS TAKEN FROM THE MARLBORO COUNTY AIRPORT, BENNETTSVILLE, SOUTH CAROLINA, AIRPORT LAYOUT PLAN AS PREPARED BY D.C. BARBOT AND ASSOCIATES, APRIL 1978.
3. GEODEIC DATA FOR RUNWAY PER CERTIFIED SURVEY BY HANOVER DESIGN SERVICES 7/11/02. ELEVATIONS ARE IN FEET BASED ON MEAN SEA LEVEL (MSL). HORIZONTAL DATUM: NAD83 VERTICAL DATUM: NAVD83 (MSL)



CONDITIONALLY APPROVED
FEDERAL AVIATION ADMINISTRATION
APPROVAL SUBJECT TO COMMENTS IN APPROVAL LETTER
Skull
APPROVING OFFICIAL *Alvin McCormick* DATE *8/13/2004*
ATLANTA AIRPORTS DISTRICT OFFICE
John Floyd

"The preparation of this document was financed in part through a planning grant from the federal aviation administration as provided under section 505 of the airport and airway improvement act of 1982. The contents do not necessarily reflect the official views or policy of the FAA. Acceptance of this report by the FAA does not in any way constitute a commitment on the part of the United States to participate in any development depicted therein nor does it indicate that the proposed development is environmentally acceptable in accordance with appropriate public laws."

AIRPORT DESIGN STANDARDS DIMENSIONAL DATA			
AIRPORT REFERENCE CODE (ARC) ITEM	EXIST. REQ.	ULT. REQ.	MEETS REQ.
RUNWAY SAFETY AREA (RSA) WIDTH	150'	SAME	YES
RSA BEYOND R/W 6 END	300'	SAME	YES
RSA BEYOND R/W 24 END	400'	SAME	YES
RUNWAY OBSTACLE FREE ZONE (OFZ) WIDTH	200'	SAME	YES
OFZ BEYOND R/W END	300'	SAME	YES
RUNWAY OBJECT FREE AREA (ROFA) WIDTH	500'	SAME	YES
ROFA BEYOND R/W END	300'	SAME	YES
RUNWAY PARALLEL TAXIWAY SEPARATION	240'	SAME	NO
TAXIWAY OBJECT FREE AREA (TOFA) WIDTH	131'	SAME	YES
TAXIWAY OBJECT FREE AREA	115'	SAME	YES
MINIMUM AIRCRAFT PARKING DIST FROM R/W	250'	SAME	YES

DEVIATION OF AIRPORT DESIGN STANDARDS
THE EXISTING 200' RUNWAY TO PARALLEL TAXIWAY CENTERLINE SEPARATION IS LESS THAN THE STANDARD 240'. THE EXISTING PARALLEL TAXIWAY IS WITHIN THE OBSTACLE FREE ZONE. THE PARALLEL TAXIWAY IS SHOWN TO BE RELOCATED TO MEET THE AIRPORT DESIGN STANDARDS-AS PROJECT FUNDING PERMITS.

RUNWAY DATA			
ITEM	EXISTING	ULTIMATE	
RUNWAY 6 END	LATITUDE NORTH 34°37'04.853"	SAME	
COORDINATES (NAD83)	LONGITUDE WEST 78°44'28.932"	SAME	
RUNWAY 6 END ELEVATION / TOUCH DOWN ZONE ELEVATION	138.20/148.79	SAME	
RUNWAY 24 END	LATITUDE NORTH 34°37'51.432"	SAME	
COORDINATES (NAD83)	LONGITUDE WEST 79°43'38.459"	SAME	
RUNWAY 24 END ELEVATION / TOUCHDOWN ZONE ELEVATION	147.01/147.01	SAME	
LENGTH X WIDTH	5000' X 75'	SAME	
EFFECTIVE GRADIENT	0.18%	SAME	
PAVEMENT SURFACE	ASPHALT	SAME	
PAVEMENT STRENGTH (THOUSANDS OF POUNDS)	285/43 DW	60 DW	
MARKING	NPI	SAME	
NAVAIDS	VOR	SAME	
	DME	SAME	
	NDB	SAME	
	MIRL	SAME	
	PAPI 6/24	SAME	
	REIL 6/24	SAME	
LIGHTING / APPROACH AIDS			

AIRPORT DATA			
ITEM	EXISTING	ULTIMATE	
AIRPORT REFERENCE POINT	LATITUDE NORTH 34°37'18.151"	SAME	
ARP COORDINATES (NAD83)	LONGITUDE WEST 78°44'03.694"	SAME	
ESTABLISHED AIRPORT ELEVATION (MEAN SEA LEVEL)	147' MSL	SAME	
NORMAL MAXIMUM TEMPERATURE - HOTTEST MONTH	87.0°	SAME	
AIRPORT REFERENCE CODE (ARC)	B II	SAME	
CRITICAL AIRCRAFT	FAMILY B II	SAME	
AIRPORT AND TERMINAL NAVAIDS	ROT.BEACON	SAME	
	NDB	SAME	
(1) SEGMENTED CIRCLE & LIGHTED WIND CONE	(1) SC/LWC	SAME	
NAVAIDS			
	VOR	SAME	
	DME	SAME	
	NDB	SAME	
TAXIWAY LIGHTING / SIGNAGE	MILT	SAME	

CFR PART 77 RUNWAY APPROACH AND RPZ DATA			
RUNWAY	EXISTING	ULTIMATE	
6	VOR DME OR GPS-A NONPRECISION STRAIGHT-IN NDB GPS SURFACE VISIBILITY MINIMUMS NOT LESS THAN 1 MILE 500' X 10000' X 3500' 10000' @ 34:1 REQUIRED RUNWAY PROTECTION ZONE 500' X 1000' X 700'	VOR DME OR GPS-A NONPRECISION STRAIGHT-IN NDB GPS SURFACE VISIBILITY MINIMUMS NOT LESS THAN 1 MILE 500' X 10000' X 3500' 10000' @ 34:1 REQUIRED RUNWAY PROTECTION ZONE 500' X 1000' X 700'	
24	VOR DME OR GPS-A NONPRECISION STRAIGHT-IN GPS SURFACE VISIBILITY MINIMUMS NOT LESS THAN 1 MILE 500' X 10000' X 3500' 10000' @ 34:1 REQUIRED RUNWAY PROTECTION ZONE 500' X 1000' X 700'	VOR DME OR GPS-A NONPRECISION STRAIGHT-IN GPS SURFACE VISIBILITY MINIMUMS NOT LESS THAN 1 MILE 500' X 10000' X 3500' 10000' @ 34:1 REQUIRED RUNWAY PROTECTION ZONE 500' X 1000' X 700'	

LEGEND		
ITEM	EXISTING	ULTIMATE
WOODED AREAS		
GROUND SPOT ELEVATION		
GROUND CONTOURS		
ROADS (UNPAVED)		
BUILDINGS / STRUCTURES		
ROADS (PAVED)		
AIRPORT BUILDINGS / STRUCTURES		
AIRPORT PAVED AREAS		
AIRPORT PROPERTY LINE		
AVIGATION EASEMENT		

NOAA MONUMENT DATA		
MONUMENT (A) BENPORT	N=1016828.91	ELEV.144.88
SC STATE NAD83 COORDINATES	E=2390848.70	
MONUMENT (B) BENPORT AZ MK	N=1018068.45	ELEV.144.88
SC STATE NAD83 COORDINATES	E=2382718.38	

TALBERT & BRIGHT
ENGINEERING & PLANNING CONSULTANTS
THE COTTON EXCHANGE 321 N. FRONT ST. WILMINGTON, NC 28401
FAX: 910-762-8281 PHONE: 910-762-3550
EMAIL: tbt@wilmingon.net

REVNO	DESCRIPTION	DATE	REVISIONS
2	PER FAA LETTER OF COMMENTS, 11/21/03	07/23/04	
1	PER AIP NO.3-45-008-02, 03, AND 04 PROJECTS	07/23/04	

**MARLBORO COUNTY JETPORT (BBP)
H.E. AVENT FIELD
BENNETTSVILLE, SOUTH CAROLINA
AIRPORT LAYOUT DRAWING**

Approved By
Title
Date
Scale 1"=400'
Drawn LSM
Checked JTT
Project No. 3214-9801
Sheet No. 1
Of ONE